

## **Preamble**

The Province is committed to managing Crown land within the Coastal Douglas-fir moist maritime (CDFmm) biogeoclimatic subzone in a manner that provides protection for rare or endangered plant communities.

This preamble is provided for context and background and does not form part of the following ministerial order.

# Ministry of Agriculture and Lands

## Ministerial Order

### Coastal Douglas-fir moist maritime (CDFmm) Biogeoclimatic Subzone

#### Part 1 - Interpretation

##### 1. Relationship with *Forest and Range Practices Act* objectives

- (1) Pursuant to Section 93.4 of the *Land Act*, the objective set out in paragraph 3 of this order is established as a land use objective for the purposes of the *Forest and Range Practices Act* and applies to the Crown lands within the mapped polygons shown on Schedules 1 to 5 attached to this order.
- (2) Nothing in, under or arising out of this order either abrogates or derogates from any aboriginal rights, aboriginal title or treaty rights of any applicable First Nation, nor relieves the Province of any obligation to consult with any applicable First Nation.

##### 2. Definitions

- (1) In this order, “**plant communities**” means vegetation that possesses a similar vegetation structure and native species composition and occurs repeatedly on similar habitats within the Coastal Douglas-fir moist maritime biogeoclimatic subzone.
- (2) Words and expressions not defined in this order have the meaning given to them in the *Forest and Range Practices Act*, the *Range Act* and the regulations made there under, unless the context indicates otherwise.

### 3. Objective for CDFmm biogeoclimatic subzone plant communities

- (1) Protect all CDFmm biogeoclimatic subzone plant communities within the polygons identified in Schedules 1 to 5 attached to this order.
- (2) Despite subsection (1), up to 5% of a polygon may be disturbed if there is no practicable alternative for road access or other infrastructure or to address a safety concern.
- (3) Where the objective refers to an area shown on a schedule and the area is also defined by a spatial dataset, the boundaries of the area as defined by the spatial dataset apply in the event of any inconsistency. All spatial datasets are available at <http://www.geobc.gov.bc.ca>.

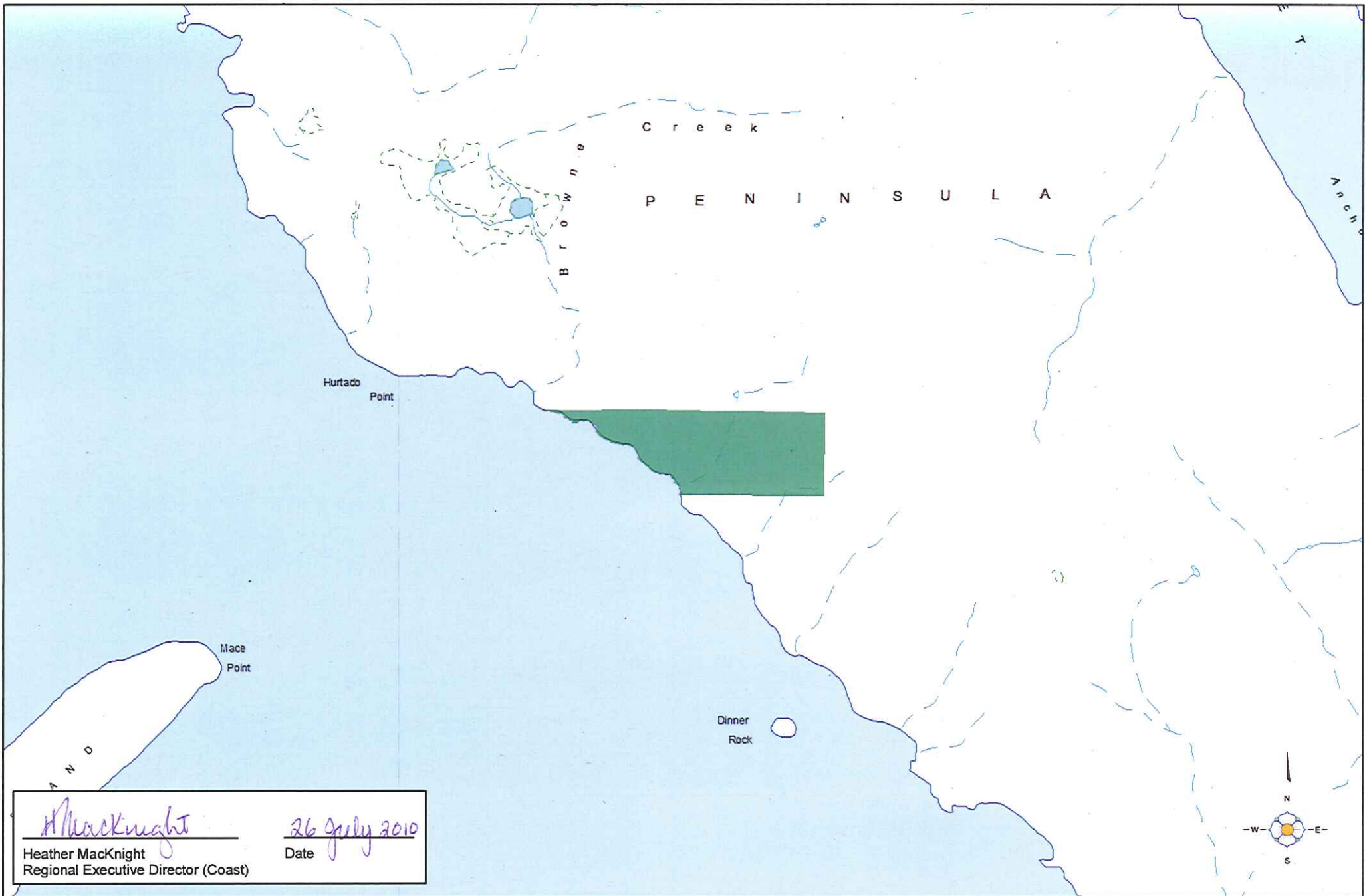
## Part 2 - Transition

### 4. Application of this order

- (1) This order takes effect on the date that the notice of the order is published in the Gazette.
- (2) The applicable period under 8(2) (b) of the *Forest and Range Practices Act* is 12 months starting on the date this order comes into effect.

  
\_\_\_\_\_  
**Heather MacKnight**, MCIP  
Regional Executive Director  
Integrated Land Management Bureau  
Coast Region

26 July 2010  
Date



*H MacKnight*  
 Heather MacKnight  
 Regional Executive Director (Coast)

*26 July 2010*  
 Date

Note:  
 The boundaries depicted on this schedule map are a representation of a spatial dataset and may not portray the full visual detail of the original dataset. The source dataset is available in: <http://www.geobc.gov.bc.ca>

**Legend**

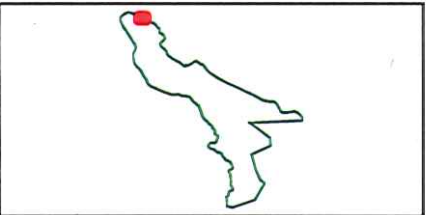
 Hurtado Polygons

**Hurtado**

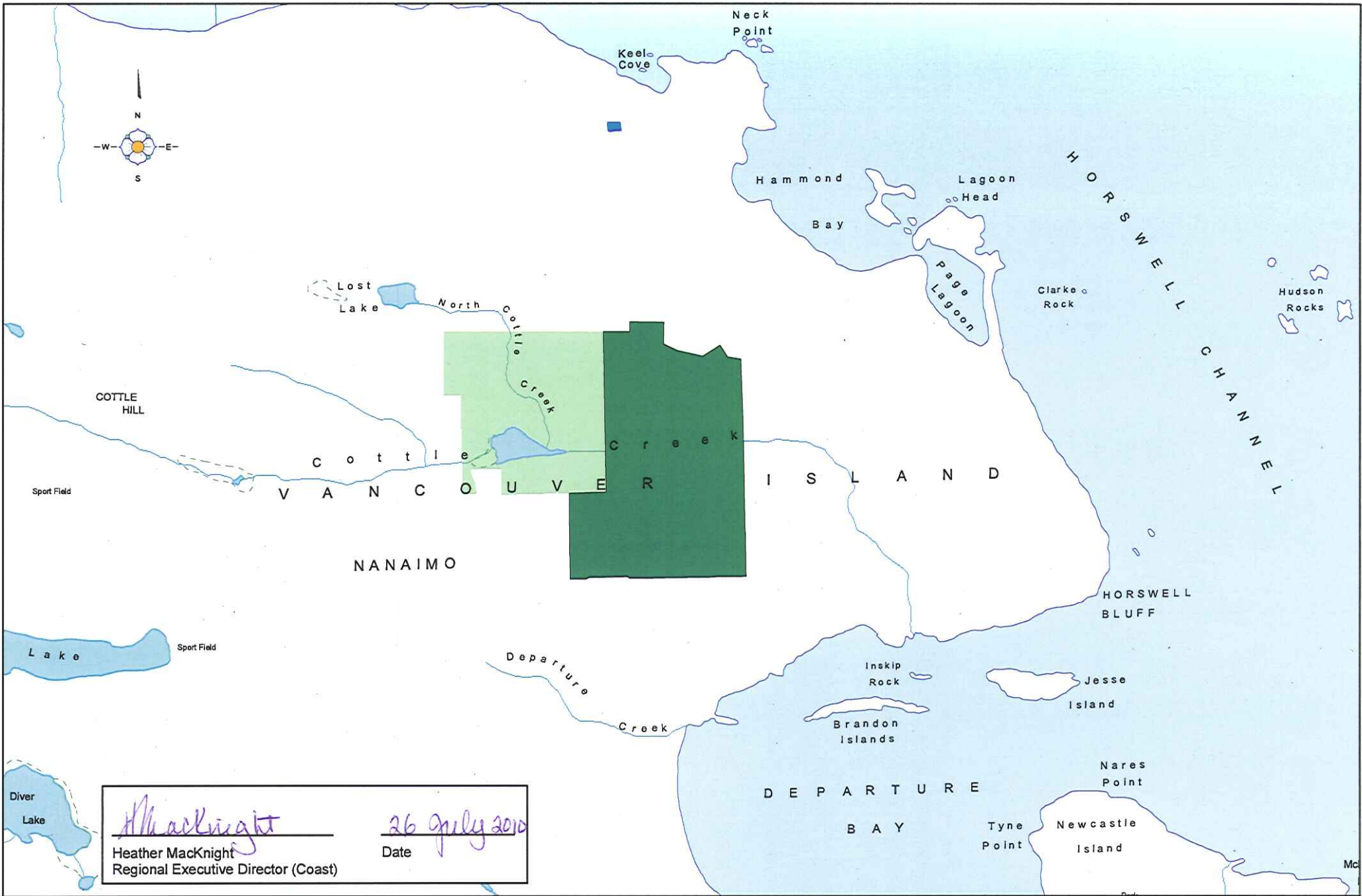
  
 Nanaimo Service Centre

0 125 250 500 750  
 Metres

BC Standard Albers, NAD83







**Note:**

The boundaries depicted on this schedule map are a representation of a spatial dataset and may not portray the full visual detail of the original dataset. The source dataset is available in: <http://www.geobc.gov.bc.ca>

- Linley Valley
- Draft Old Growth Management Areas
- Linley Valley Cottle Lake Park

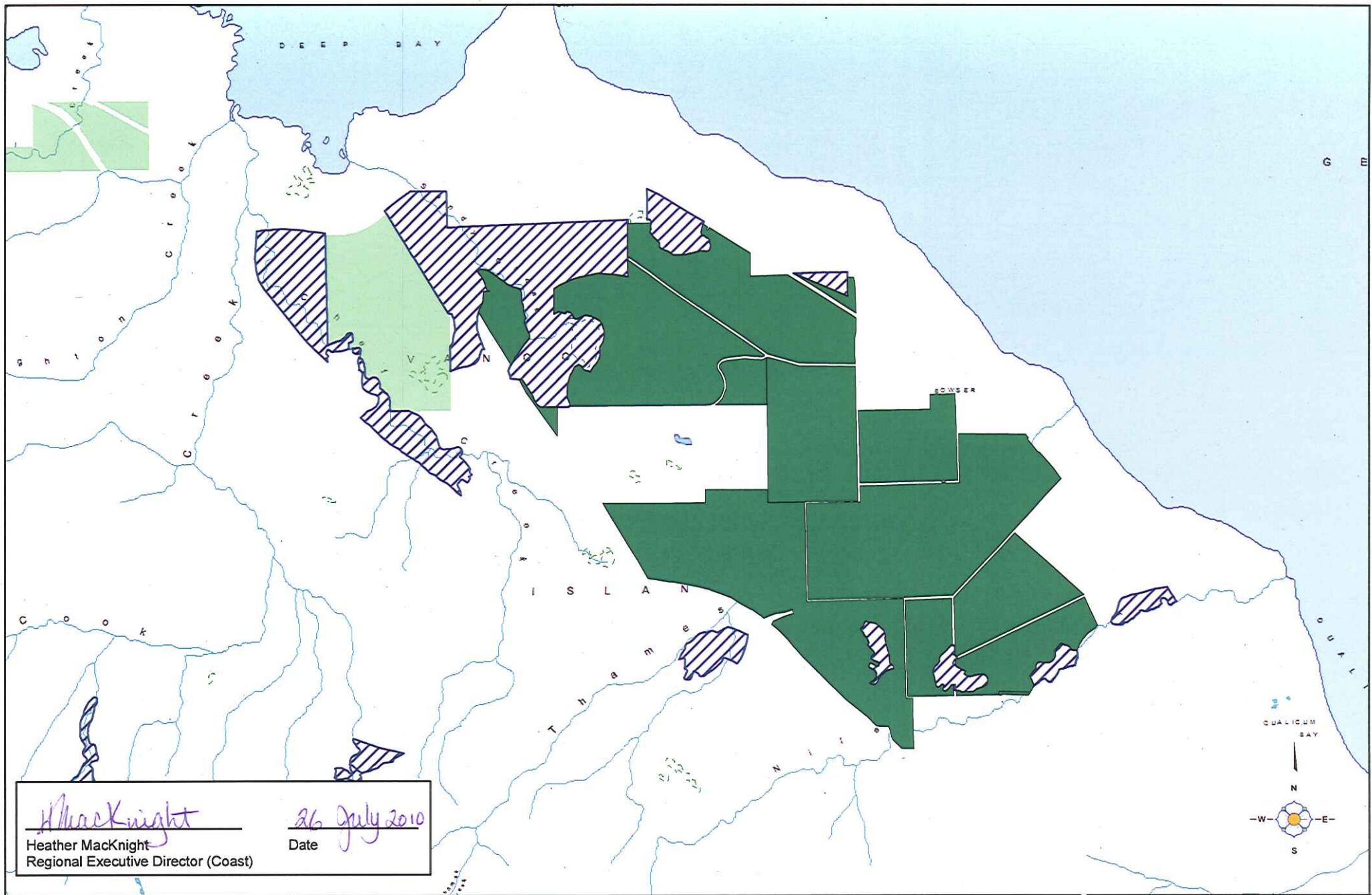
## Linley Valley

BRITISH COLUMBIA  
GeoBC  
Nanaimo Service Centre

0 125 250 500 750  
Meters

BC Standard Albers, NAD83





*H MacKnight*  
 Heather MacKnight  
 Regional Executive Director (Coast)

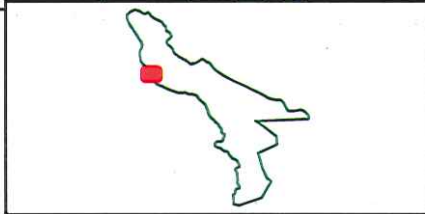
*26 July 2010*  
 Date

Note:  
 The boundaries depicted on this schedule map are a representation of a spatial dataset and may not portray the full visual detail of the original dataset. The source dataset is available in: <http://www.geobc.gov.bc.ca>

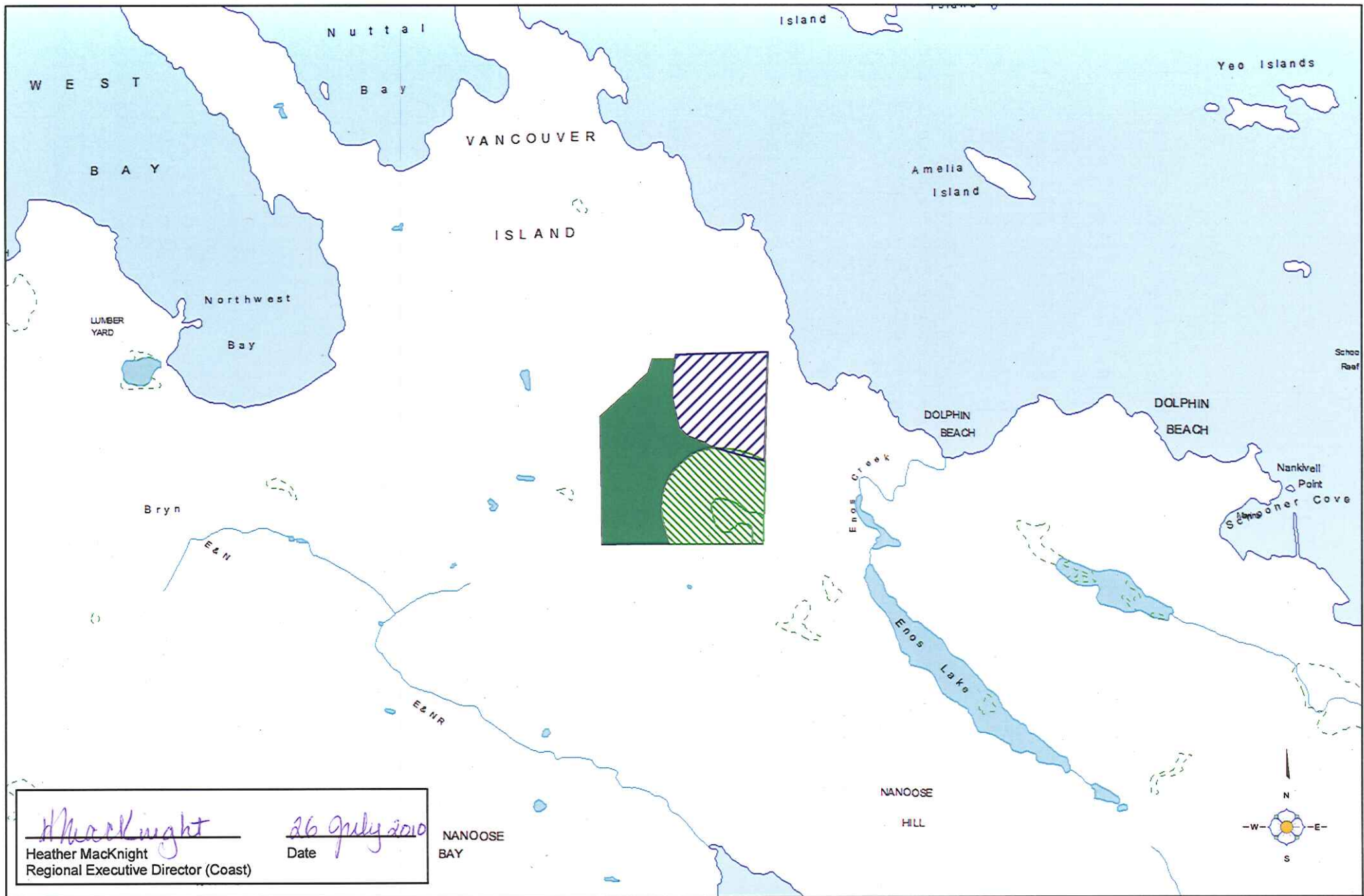
- Bowser
- Draft Old Growth Management Areas
- Protected Areas

## Bowser

BC Standard Albers, NAD83







*Heather MacKnight*  
 Heather MacKnight  
 Regional Executive Director (Coast)

*26 July 2010*  
 Date

Note:  
 The boundaries depicted on this schedule map are a representation of a spatial dataset and may not portray the full visual detail of the original dataset. The source dataset is available in: <http://www.geobc.gov.bc.ca>

- Legend**
- Nanoose Polygons
  - Draft Old Growth Management Area
  - Wildlife Habitat Area

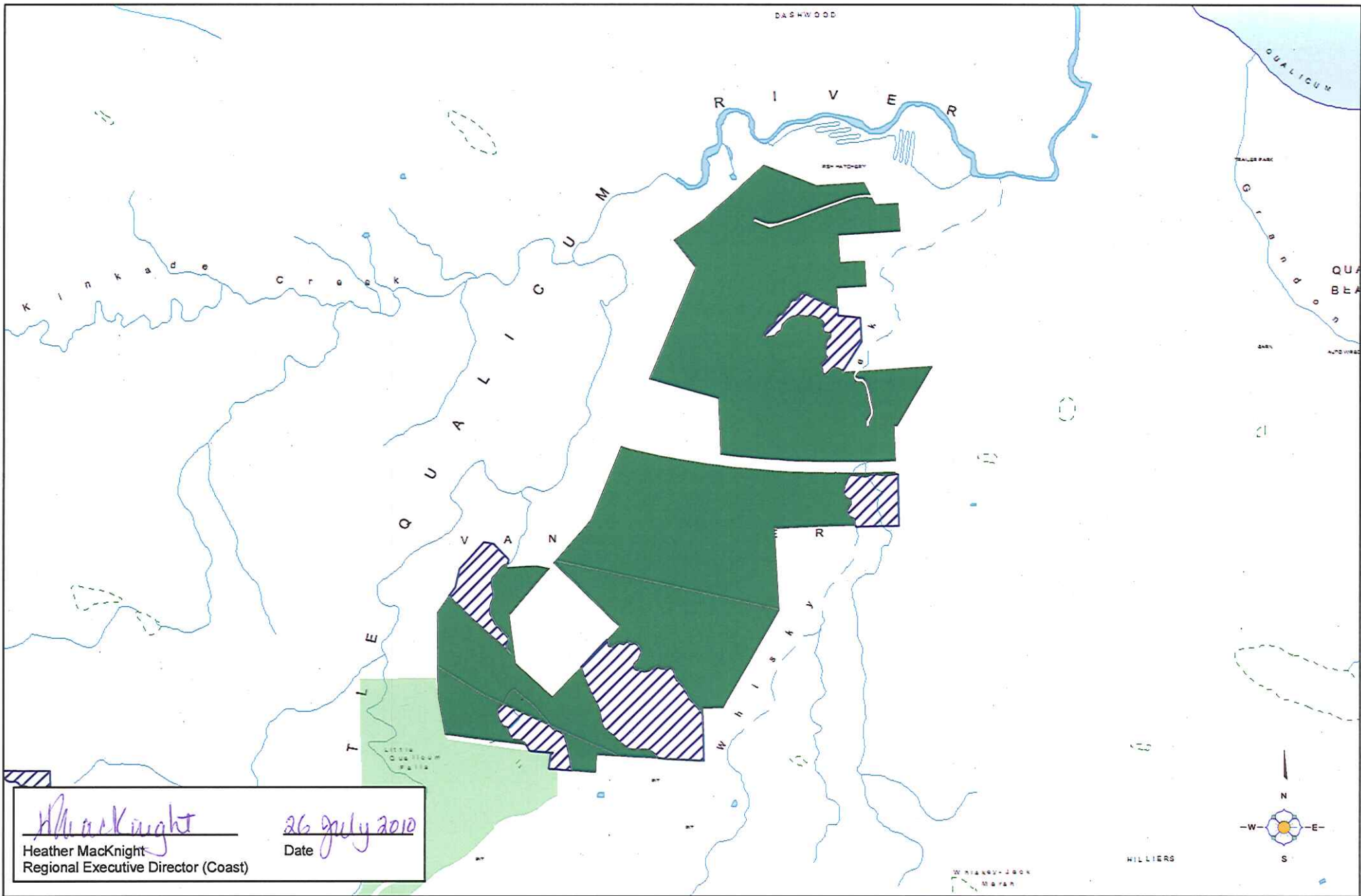
# Nanoose

BRITISH COLUMBIA  
 GeoBC  
 Nanaimo Service Centre

0 125 250 500 750  
 Meters

BC Standard Albers, NAD83





*Heather MacKnight*  
 Heather MacKnight  
 Regional Executive Director (Coast)

*26 July 2010*  
 Date

**Note:**  
 The boundaries depicted on this schedule map are a representation of a spatial dataset and may not portray the full visual detail of the original dataset. The source dataset is available in: <http://www.geobc.gov.bc.ca>

- Legend**
- Little Qualicum Polygons
  - Draft Old Growth Management Areas
  - Protected Areas

## Little Qualicum

**Nanaimo Service Centre**

0 125 250 500 750 1,000  
 Meters

BC Standard Albers, NAD83

