

Note:
 The boundaries depicted on this schedule map are a representation of a spatial dataset and may not portray the full visual detail of the original dataset. The source dataset is available at <http://www.geobc.gov.bc.ca>.

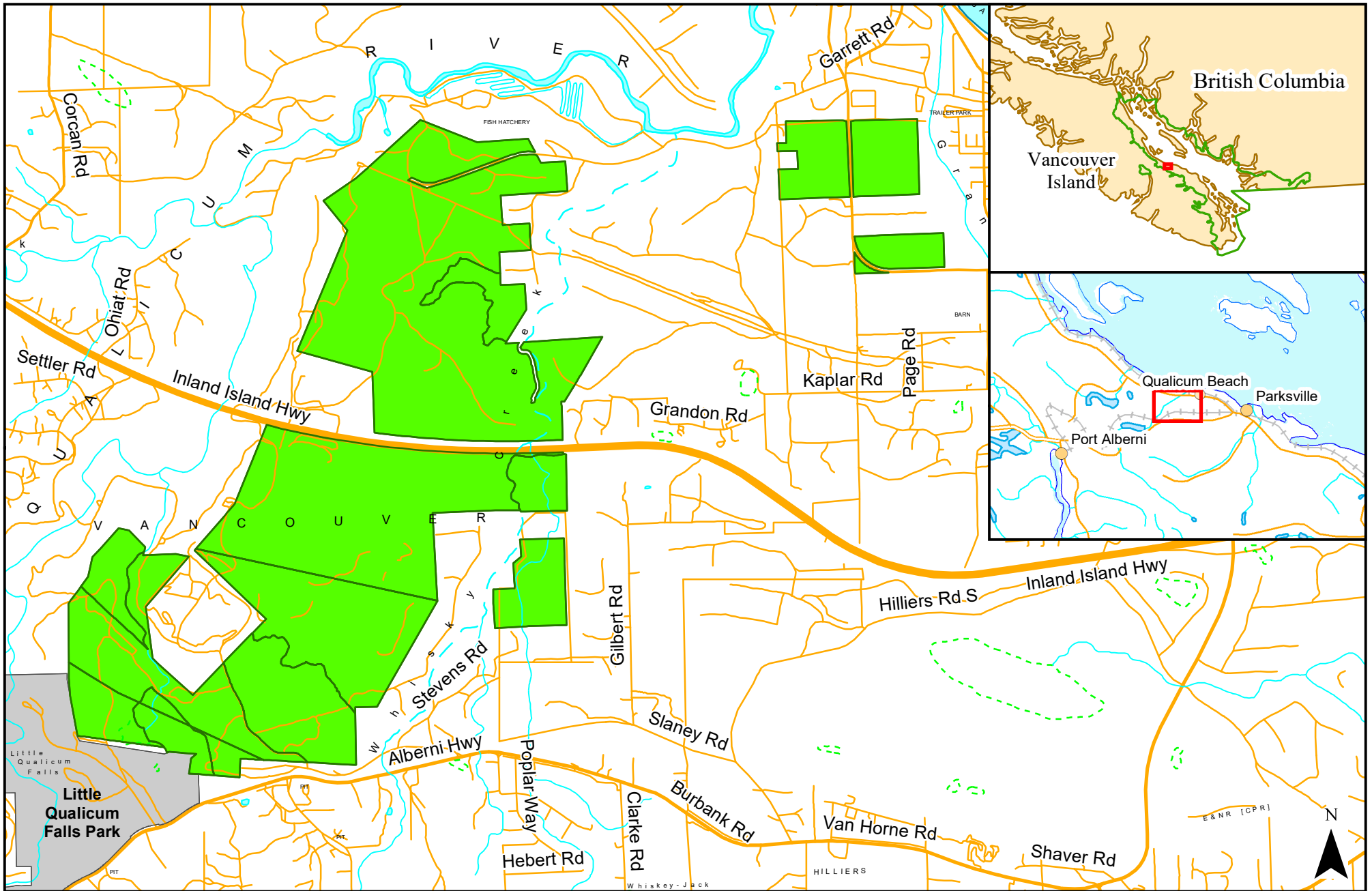
Coastal Douglas-fir Land Use Order - Schedule 1

- CDF Land Use Order (Amended 2018)
- Parks and Ecological Reserves

0 250500 1,000 m



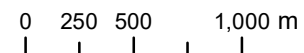
BC Standard Albers
 NAD83



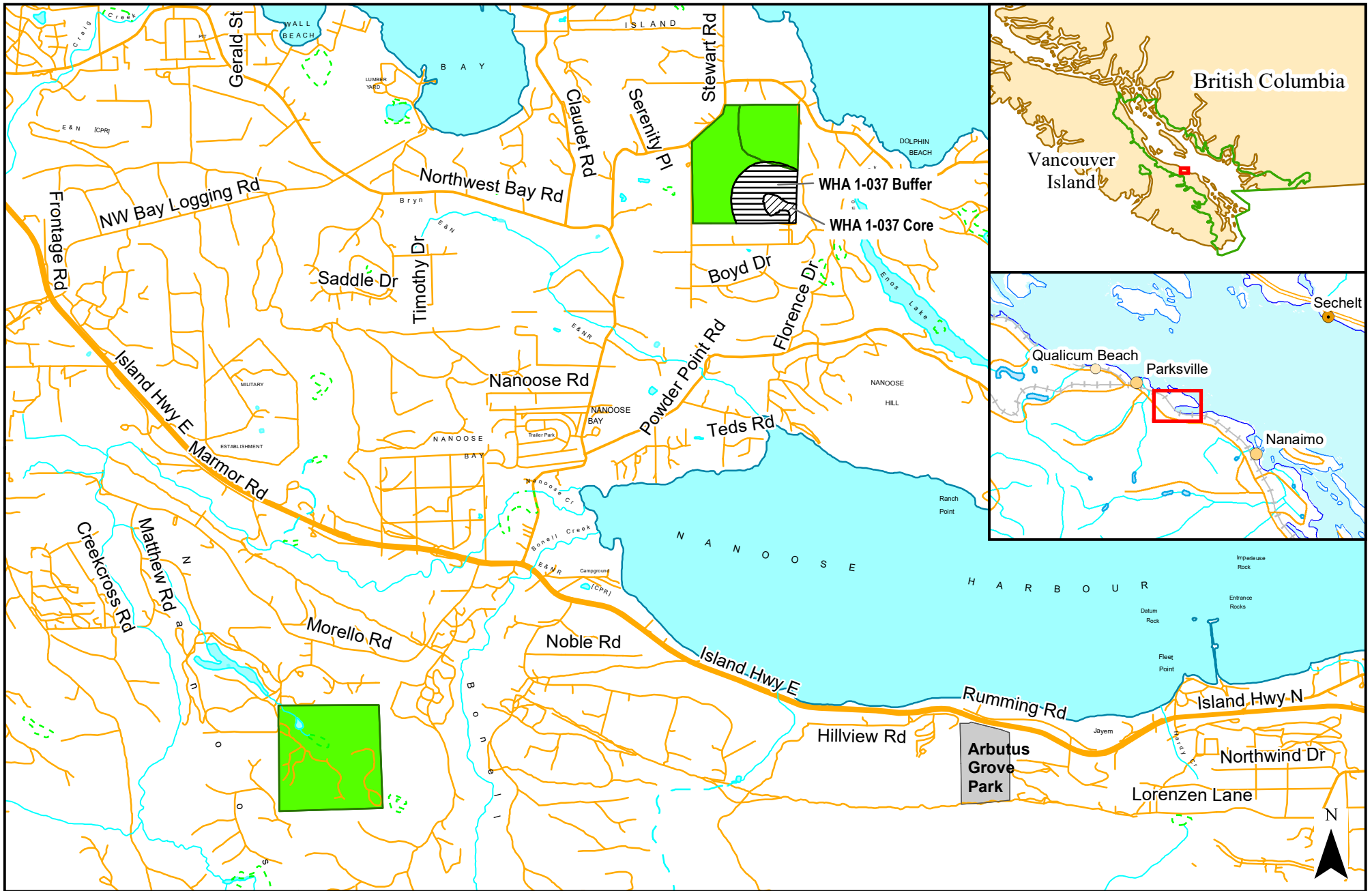
Note:
 The boundaries depicted on this schedule map are a representation of a spatial dataset and may not portray the full visual detail of the original dataset. The source dataset is available at <http://www.geobc.gov.bc.ca>.

Coastal Douglas-fir Land Use Order - Schedule 2

- CDF Land Use Order (Amended 2018)
- Parks and Ecological Reserves



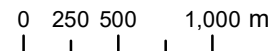
BC Standard Albers
 NAD83



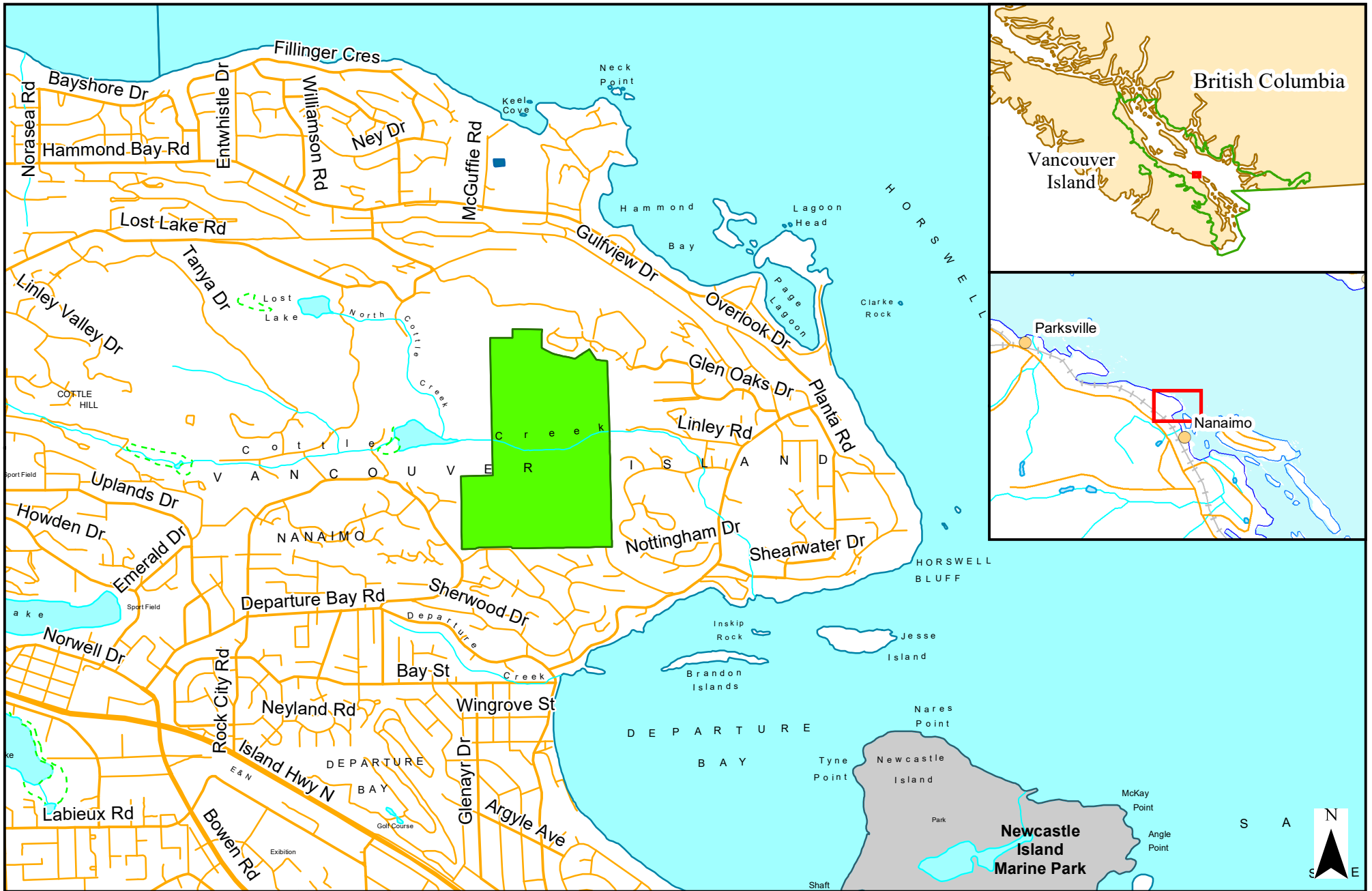
Note:
 The boundaries depicted on this schedule map are a representation of a spatial dataset and may not portray the full visual detail of the original dataset. The source dataset is available at <http://www.geobc.gov.bc.ca>.

Coastal Douglas-fir Land Use Order - Schedule 3

- CDF Land Use Order (Amended 2018)
- Parks and Ecological Reserves



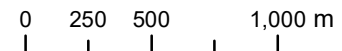
BC Standard Albers
 NAD83



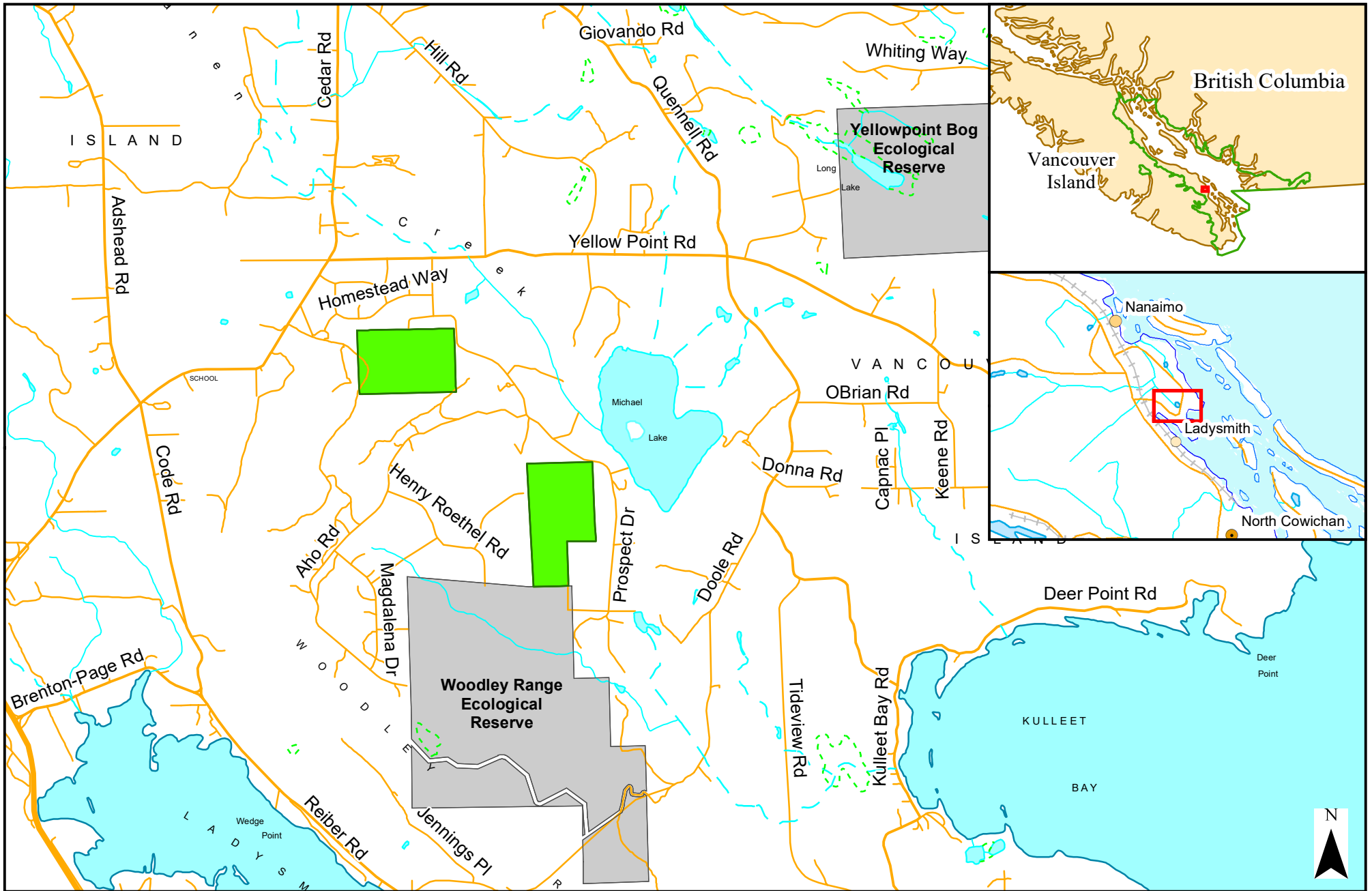
Note:
 The boundaries depicted on this schedule map are a representation of a spatial dataset and may not portray the full visual detail of the original dataset. The source dataset is available at <http://www.geobc.gov.bc.ca>.

Coastal Douglas-fir Land Use Order - Schedule 4

- CDF Land Use Order (Amended 2018)
- Parks and Ecological Reserves



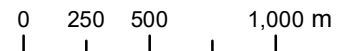
BC Standard Albers
 NAD83



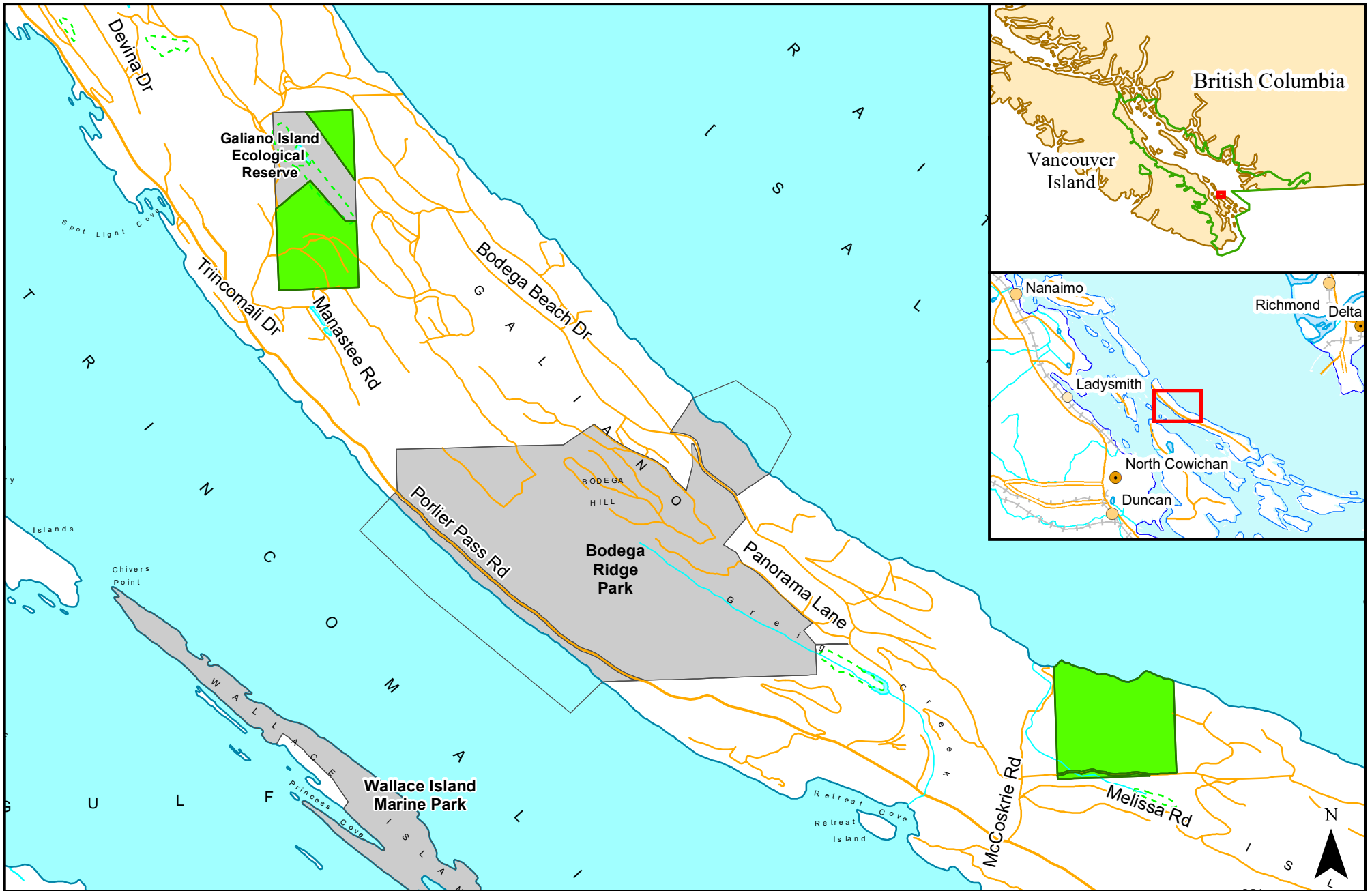
Note:
 The boundaries depicted on this schedule map are a representation of a spatial dataset and may not portray the full visual detail of the original dataset. The source dataset is available at <http://www.geobc.gov.bc.ca>.

Coastal Douglas-fir Land Use Order - Schedule 5

- CDF Land Use Order (Amended 2018)
- Parks and Ecological Reserves



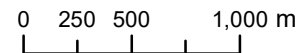
BC Standard Albers
 NAD83



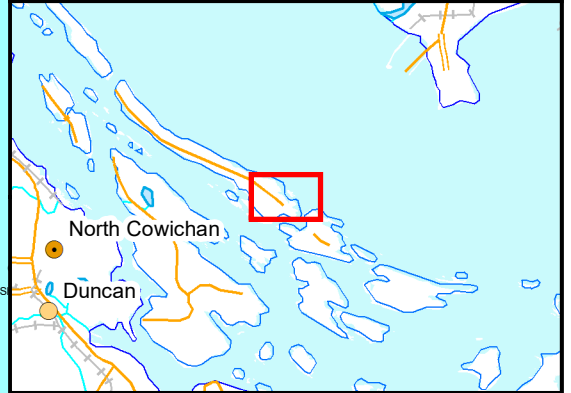
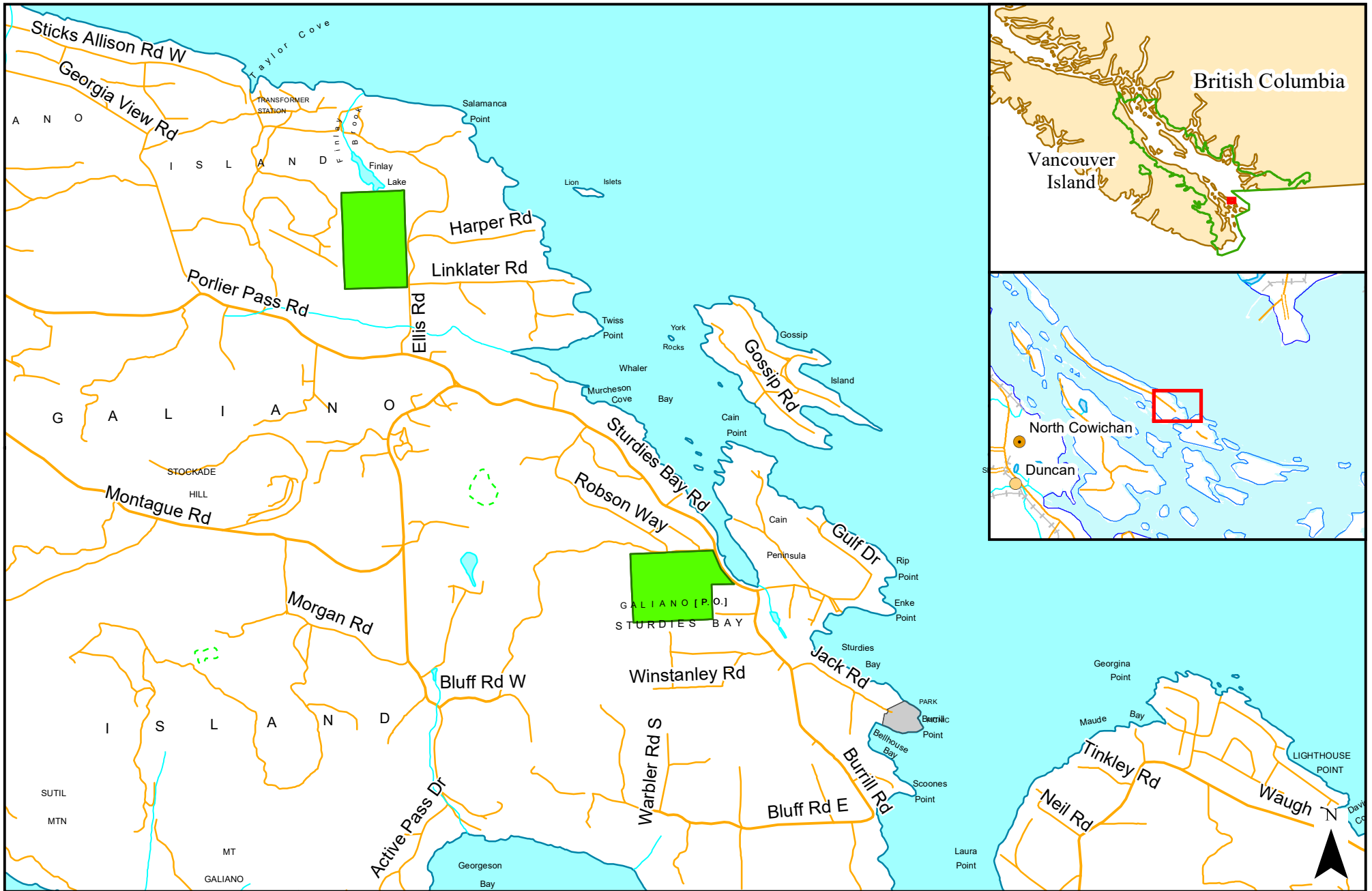
Note:
 The boundaries depicted on this schedule map are a representation of a spatial dataset and may not portray the full visual detail of the original dataset. The source dataset is available at <http://www.geobc.gov.bc.ca>.

Coastal Douglas-fir Land Use Order - Schedule 6

- CDF Land Use Order (Amended 2018)
- Parks and Ecological Reserves



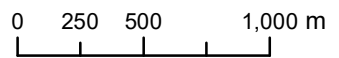
BRITISH COLUMBIA
 BC Standard Albers
 NAD83

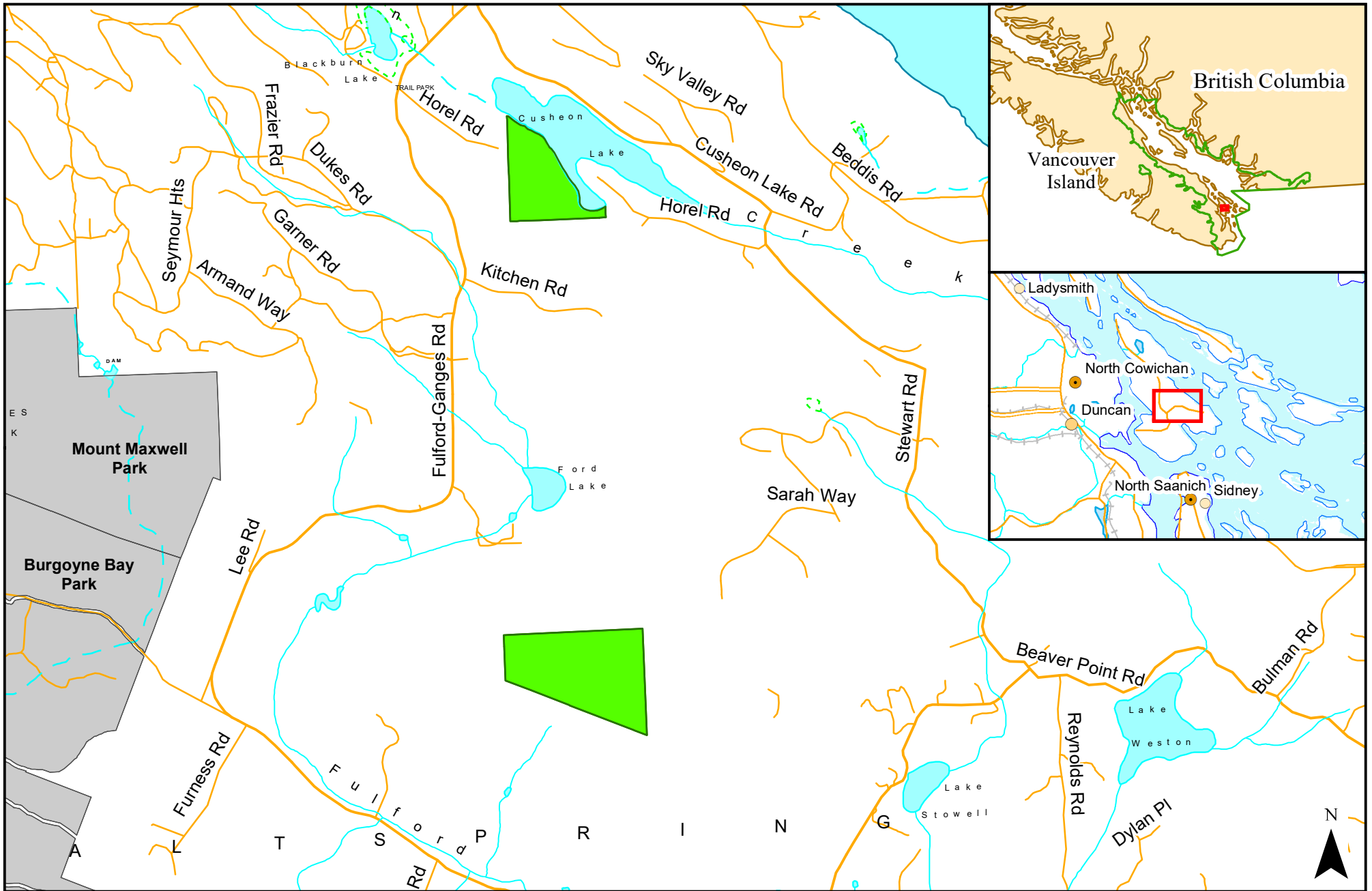


Note:
 The boundaries depicted on this schedule map are a representation of a spatial dataset and may not portray the full visual detail of the original dataset. The source dataset is available at <http://www.geobc.gov.bc.ca>.

Coastal Douglas-fir Land Use Order - Schedule 7

- CDF Land Use Order (Amended 2018)
- Parks and Ecological Reserves

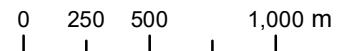




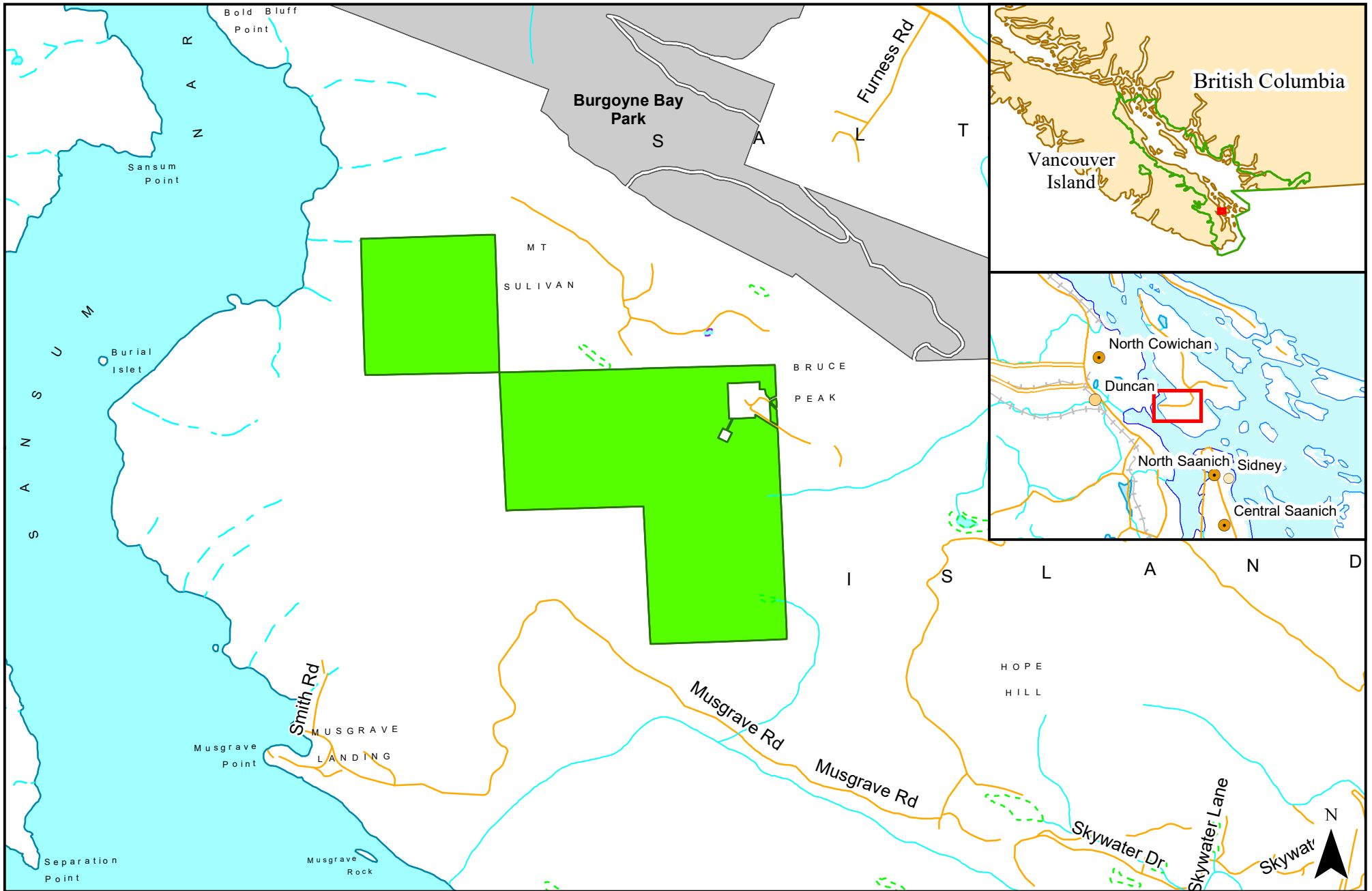
Note:
 The boundaries depicted on this schedule map are a representation of a spatial dataset and may not portray the full visual detail of the original dataset. The source dataset is available at <http://www.geobc.gov.bc.ca>.

Coastal Douglas-fir Land Use Order - Schedule 8

- CDF Land Use Order (Amended 2018)
- Parks and Ecological Reserves



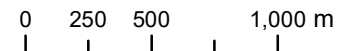
BC Standard Albers
 NAD83



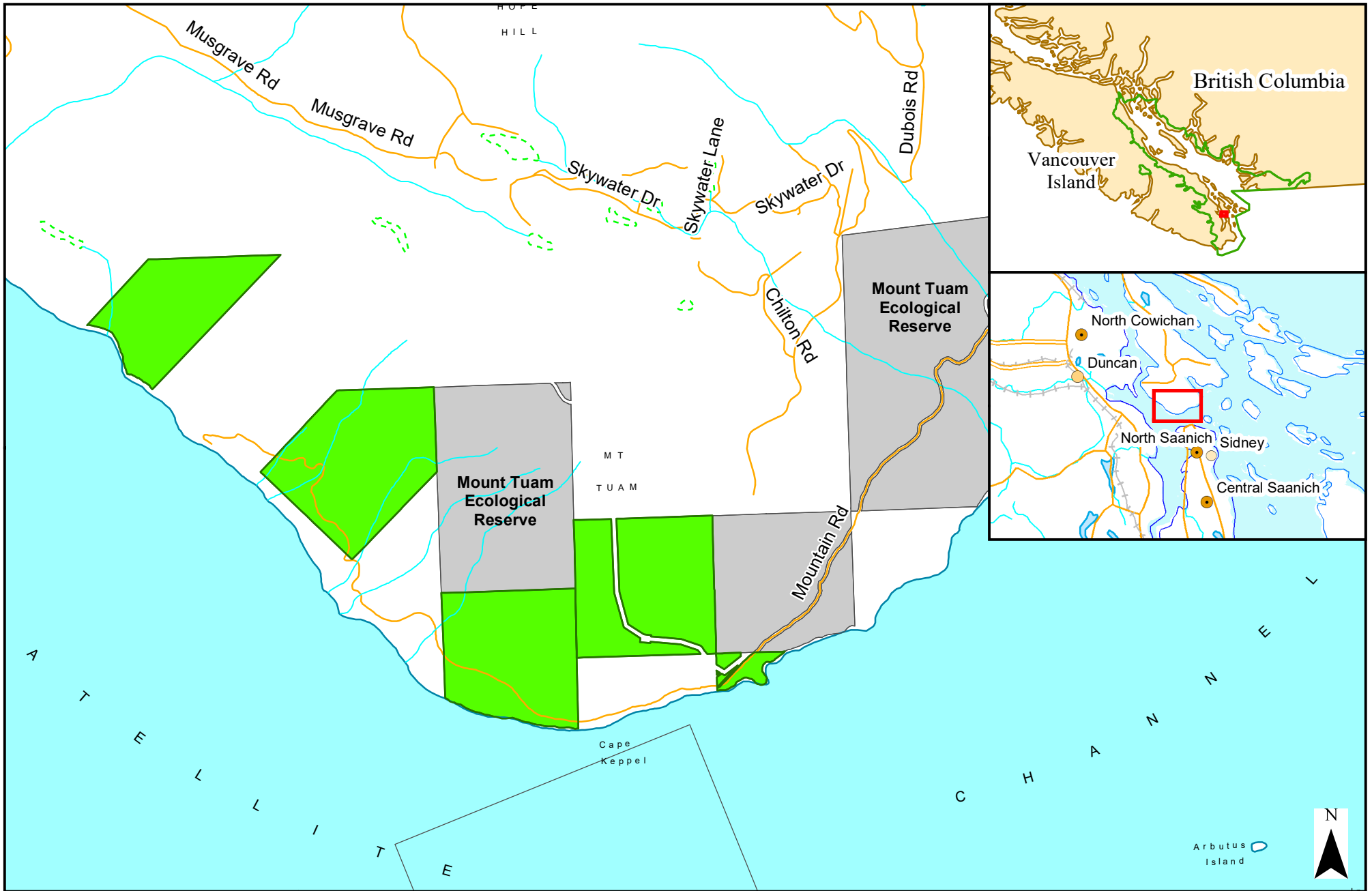
Note:
 The boundaries depicted on this schedule map are a representation of a spatial dataset and may not portray the full visual detail of the original dataset. The source dataset is available at <http://www.geobc.gov.bc.ca>.

Coastal Douglas-fir Land Use Order - Schedule 9

- CDF Land Use Order (Amended 2018)
- Parks and Ecological Reserves



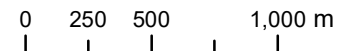
BC Standard Albers
 NAD83



Note:
 The boundaries depicted on this schedule map are a representation of a spatial dataset and may not portray the full visual detail of the original dataset. The source dataset is available at <http://www.geobc.gov.bc.ca>.

Coastal Douglas-fir Land Use Order - Schedule 10

- CDF Land Use Order (Amended 2018)
- Parks and Ecological Reserves



BC Standard Albers
 NAD83