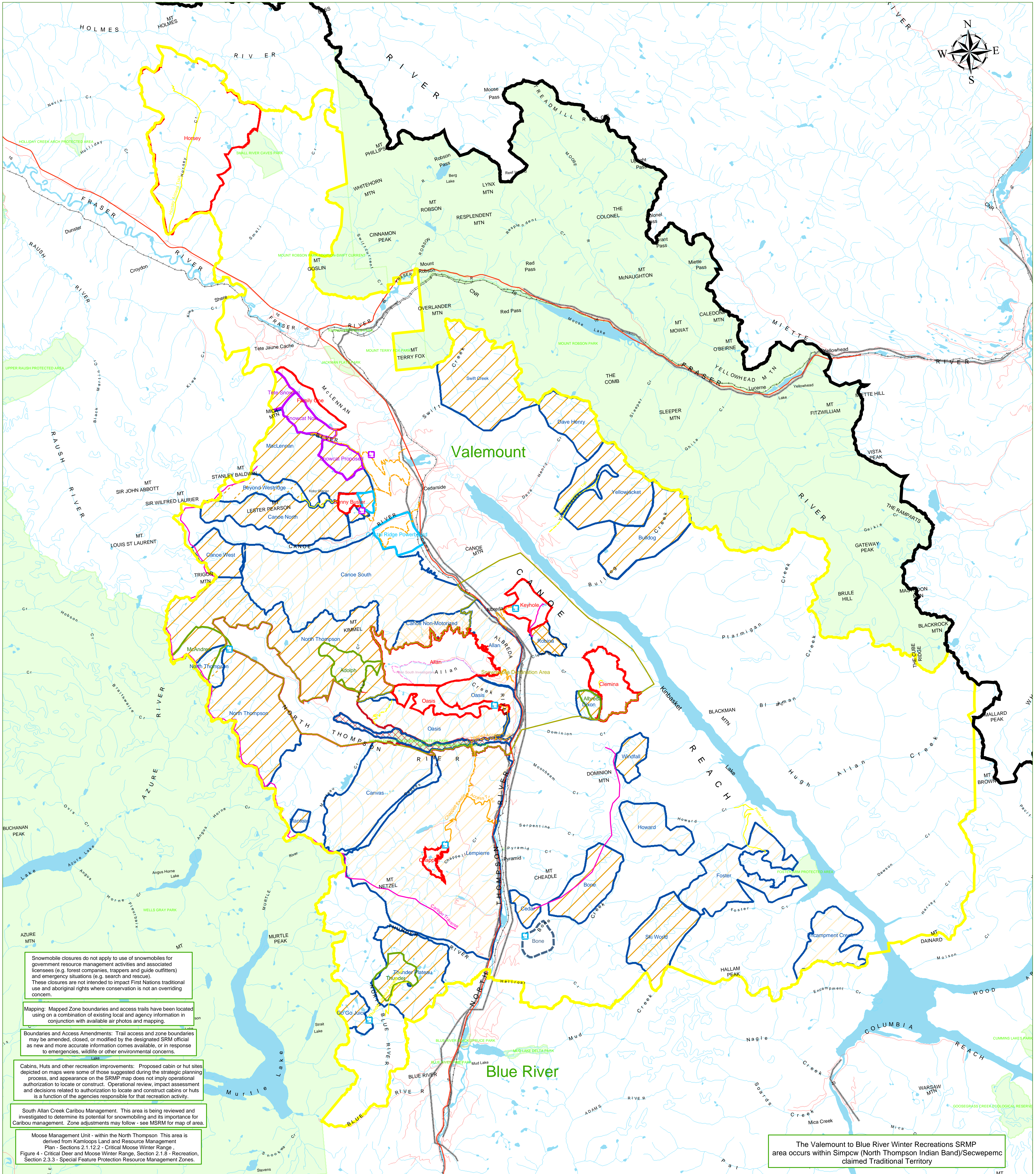


# MAP 1 - VALEMOUNT TO BLUE RIVER SRMP PLAN JANUARY 2005



Snowmobile closures do not apply to use of snowmobiles for government resource management activities and associated licensees (e.g. forest companies, trappers and guide outfitters) and emergency situations (e.g. search and rescue). These closures are not intended to impact First Nations traditional use and aboriginal rights where conservation is not an overriding concern.

Mapping: Mapped Zone boundaries and access trails have been located using a combination of existing local and agency information in conjunction with available air photos and mapping.

Boundaries and Access Amendments: Trail access and zone boundaries may be amended, closed, or modified by the designated SRMP official as new and more accurate information comes available, or in response to emergencies, wildlife or other environmental concerns.

Cabins, Huts and other recreation improvements: Proposed cabin or hut sites depicted on maps were some of those suggested during the strategic planning process, and appearance on the SRMP map does not imply operational authorization to locate or construct. Operational review, impact assessment and decisions related to authorization to locate and construct cabins or huts is a function of the agencies responsible for that recreation activity.

South Allan Creek Caribou Management: This area is being reviewed and investigated to determine its potential for snowmobiling and its importance for Caribou management. Zone adjustments may follow - see MSRM for map of area.

Moose Management Unit - within the North Thompson: This area is derived from Kamloops Land and Resource Management Plan - Sections 2.1.12.2 - Critical Moose Winter Range, Figure 4 - Critical Deer and Moose Winter Range, Section 2.1.8 - Recreation, Section 2.3.3 - Special Feature Protection Resource Management Zones.

The Valemount to Blue River Winter Recreations SRMP area occurs within Simpcw (North Thompson Indian Band)/Secwepemc claimed Traditional Territory

Provincial Parks	Managed Snowmobile Zone	Sled Skiing/Boarding Zone	Snowmobile Closure Zones	Existing Groomed Snowmobile Trails	Ski Touring Traverse
SRMP Boundary	Helicopter and Backcountry Ski Zone	Ice Climbing Zone	Recreation Closure	Proposed Improved Snowmobile Trails	
Controlled Recreation Areas (Proposed Pilots)	Non-Motorized Backcountry Winter Recreation Zone	Snowmobile Destination Area	Caribou Closure	Existing Unimproved Snowmobile Trails	
Roads	Snowcat-Ski Zone	Proposed Huts and Cabins	Non-Motorized Closure	Proposed Unimproved Snowmobile Trails	
Rail	Moose Management Unit - Closure (see also mapnote)	Existing Huts and Cabins	Time Specific Closure		
Transmission and Pipelines					

Data Sources  
 Transportation and Utilities - MSRM SDE Warehouse (NTS)  
 Water Features - MSRM SDE Warehouse(NTS)  
 Provincial Parks - MSRM Coverage Warehouse

Map Prepared by: Kamloops Service Center, LISD, MSRM  
 Produced: February 20th, 2005  
 Projection: BC Albers Equal Area, NAD83

Scale 1:160,000