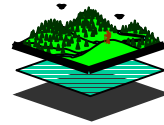
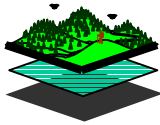


IMPLEMENTATION FACT SHEET OKANAGAN-SHUSWAP LRMP



FACT SHEET No. 2 MAY 2001

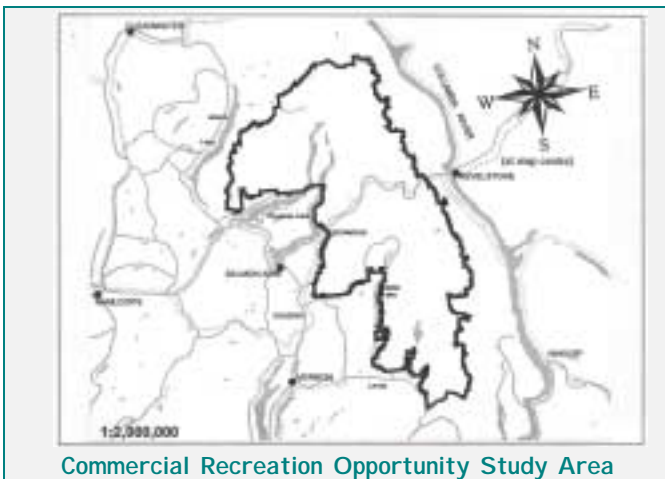
PAGE 1 OF 2

HOW THE MONASHEE COMMERCIAL RECREATION OPPORTUNITY STUDY INCORPORATES LRMP DIRECTION

This Fact Sheet is one of a series of Implementation Fact Sheets/Bulletins prepared by the Plan Support Team (PST) to provide information on various components related to the implementation of the Okanagan-Shuswap LRMP (OSLRMP). Fact Sheet #2 provides an informative summary of how the strategic management direction in the OSLRMP provides direction to operational plans like BC Assets and Land Corporation's Commercial Recreation Opportunity Study for the North Central Monashees.

The disposition of Crown land for commercial recreation uses (outdoor recreation tourism activities), is administered by the British Columbia Assets and Land Corporation (BCAL) under the *Land Act*. In an attempt to proactively manage the growth of the commercial recreation industry in the region and facilitate the various positive socio-economic benefits of commercial recreation, including established activities and the development of new opportunities, BCAL made the decision to commission a "Commercial Recreation Opportunity Study" for the area shown on the map below.

Within this area, the OSLRMP has identified various management issues relating to, among other things, tourism, recreation and wildlife management. The delivery of commercial recreation opportunities will be consistent with the goals, objectives and strategies of the OSLRMP.



Management Direction in the LRMP Document

The decision to undertake commercial recreation opportunity studies is supported by the OSLRMP pursuant to Strategy 2.3 of the Crown Land General Management Zone ([Crown Land GMZ 2.3](#)). The OSLRMP also recognizes the importance of tourism as a significant land use and economic generator in the plan area by incorporating both a Tourism General Management Zone and Polygon Specific Resource Management Zones.

The OSLRMP provides strategic management direction to agencies like BCAL, in the delivery of their mandated responsibilities. Too numerous to mention, the OSLRMP provides a number of objectives and strategies that will be followed by BCAL when considering Crown land disposition applications.

Implementation of the Management Direction by Provincial Agencies

The Monashee Commercial Recreation Opportunity Study is not a land use plan. It is a management tool that will be used by BCAL to ensure the orderly delivery of commercial recreation tenures by identifying potentially viable winter-based opportunities and providing management issues to be considered in rendering decisions on commercial recreation applications, including LRMP direction.

The identification of potentially viable commercial recreation operating areas and respective management considerations was done in consultation with provincial agencies, First Nations, stakeholders and the public. BCAL will now invite applications from interested businesses to be considered under a separate review and evaluation process. Site-specific applications will undergo detailed evaluations as required in the province's Commercial Recreation on Crown Land Policy, including but not limited to, inter-agency referrals and public consultation. Decisions rendered will be consistent with the OSLRMP.

See BCAL's website @ www.bcal.bc.ca for further information about BCAL and the programs it administers. The final report of the Commercial Recreation Opportunity Study for the North Central Monashees, together with a summary of applications received will be posted on this website.

For further information on the LRMP Management Direction, see the LRMP document and maps on the LRMP Website: <http://www.lrpm.gov.bc.ca/okanagan/>



Produced by the LRMP Plan Support Team to inform public user groups about the implementation of specific components of the LRMP Management Direction

Kelly Flexman, Planning Technician - 250 558-1749