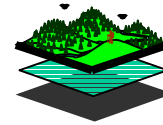
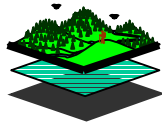


IMPLEMENTATION FACT SHEET OKANAGAN-SHUSWAP LRMP



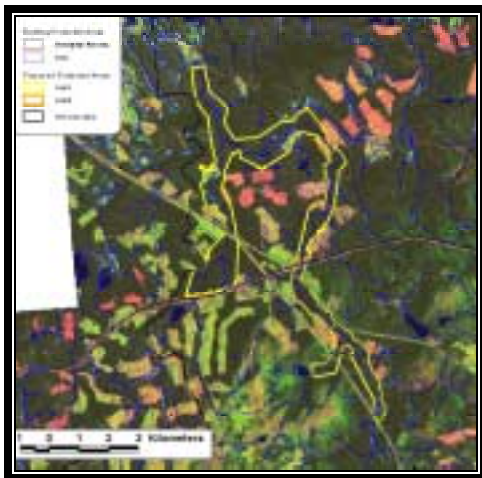
FACT SHEET No. 1 APRIL 2001

PAGE 1 OF 2

HOW FISH INTERESTS IN THE PENNASK WATERSHED ARE INCORPORATED INTO THE OKANAGAN-SHUSWAP LRMP

This Fact Sheet is one of a series of Implementation Fact Sheets/Bulletins prepared by the Plan Support Team (PST) to provide information on implementation of the Okanagan-Shuswap LRMP (OSLRMP). Fact Sheet #1 summarizes strategic management direction in the OSLRMP to protect fish interests in the Pennask Watershed, and outlines initiatives to implement this strategic management direction in operational plans.

Under the OSLRMP, part of the Pennask Watershed is protected through creation of the Pennask Creek Protected Area. This protected area is important to park management direction. For the rest of the Pennask Watershed, fisheries values are protected through general and polygon-specific management direction.

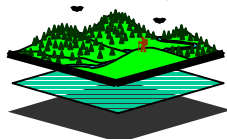


Pennask Creek Protected Area



Okanagan-Shuswap LRMP

OSLRMP



Produced by the LRMP Plan Support Team to inform public user groups about the implementation of specific components of the LRMP Management Direction

Kelly Flexman, LRMP Technician - 250 558-1749

Management Direction in the LRMP Document

Fish interests in the Pennask Watershed are addressed in the Okanagan-Shuswap LRMP (OSLRMP) through:

- 1) **General Management Directives** that are applied throughout the entire land area within the LRMP boundaries. The *Riparian and Wetland General Management Zone (GMZ)*, and *Fish & Aquatic GMZ* sections provide adequate protection of riparian habitat to sustain healthy aquatic ecosystems for fish and wildlife populations through the following strategies:
 - a) *Riparian GMZ 1.1* establishes 10,000 hectares of “enhanced riparian reserves” within the timber harvesting land base (THLB) in the next five years;
 - b) *Riparian GMZ 1.4, 1.5, 1.6* allocates Riparian Reserve Zones (RRZ) 50, 30 and 20 metres wide in S1, S2 and S3 streams. Riparian Management Zones (RMZ) 20 metres wide will also be established on each side of the streams;
 - c) *Riparian GMZ 1.13* maintains the integrity of riparian areas during forestry operations;
 - d) *Riparian GMZ 1.15* expedites the replanting of trees in blocks bordering riparian zones;
 - e) *Riparian GMZ 1.16* manages livestock to avoid riparian areas;
 - f) *Riparian GMZ 1.17* locates stock watering works so as to protect/maintain riparian areas;
 - g) *Riparian GMZ 1.18* minimizes the number and impacts of stream crossings.
- 2) **Polygon-Specific Management Directives** that focus on managing specific resource values within the LRMP resource management zones. The *Fish & Aquatic Habitat Resource Management Zone (RMZ)* section ensures that the broodstock collection sites identified within the OSLRMP continue to provide the egg collections necessary to support the provincial re-stocking program, and to promote shared stewardship among resource users, through the following strategies:
 - a) *Fish & Aquatic Habitat RMZ 2.4* provides protection of these areas with riparian management plans and/or allotment of reserves under the enhanced riparian protection “budget”;
 - b) *Fish & Aquatic Habitat RMZ 2.7* manages livestock use away from streamside riparian areas with grazing rotations, off-stream water developments, fencing, natural barriers, and strategically-located salt placement;
 - c) *Fish & Aquatic Habitat RMZ 1.2, 1.3* requires that risk assessments be conducted prior to development in watersheds containing, or upstream of, important fisheries values within broodstock collection sites to determine cumulative impacts resulting from proposed developments.
- 3) **Park Management Directives** that focus on managing the specific Goal 1 Protected Area – Pennask Creek. The *Protected Areas – Goal 1 (Pennask Creek PA)* section ensures a cooperative management of this Protected Area among Parks and other agencies through the following management directives:
 - a) management plan developed by various stakeholders and interest groups;
 - b) recreational use discouraged in the area to protect important fisheries values;
 - c) cattle grazing and/or watering minimized where high environmental impact occurs;
 - d) existing water quality problems remedied by appropriate agencies.

Implementation of the Management Direction by Provincial Agencies

The following Ministry of Forests (MoF) and Ministry of Environment, Lands & Parks (MELP) initiatives may be undertaken for the implementation of the general, polygon-specific, and protected area strategic management directives of the OSLRMP:

- a) Forest Development Plans follow the management direction from the *Riparian and Wetlands GMZ, Fish & Aquatic Habitat GMZ, and Fish & Aquatic Habitat RMZ* sections;
- b) Range Use Plans follow the management direction from the *Riparian and Wetlands GMZ, Fish & Aquatic Habitat GMZ, and Fish & Aquatic Habitat RMZ* sections;
- c) Silvicultural Plans follow the management direction from the *Riparian and Wetlands GMZ, Fish & Aquatic Habitat GMZ, and Fish & Aquatic Habitat RMZ* sections
- d) Park Management Direction Statements follow the management direction from the *Pennask Creek Protected Area* section;
- e) Park Management Plans follow the management direction from the *Pennask Creek Protected Area* section.

For further information on the LRMP Management Direction, see the LRMP document and maps on the LRMP Website: <http://www.lrmp.gov.bc.ca/okanagan/>