



File: ORCS 17580-02/SKWA

**ORDER TO ESTABLISH
A LANDSCAPE UNIT AND OBJECTIVES**

SKWAWKA LANDSCAPE UNIT

Pursuant to Section 4 of the *Forest Practices Code of British Columbia Act*, I hereby establish the Skwawka Landscape Unit, an area located at the head of Jervis Inlet, Sunshine Coast Forest District, effective March 25, 2002.

The boundaries of the Skwawka Landscape Unit are shown on the Skwawka Landscape Unit maps dated February 2, 2002, attached to this Order.

In addition, I hereby establish objectives for the Skwawka Landscape Unit, as attached to this Order, effective March 20, 2002.

(Original signed by)

District Manager
Sunshine Coast Forest District

March 20, 2002
Date

Legal Objectives for the Skwawka Landscape Unit

Pursuant to section 4 of the Forest Practices Code of B.C. Act, the following are landscape unit objectives for the Skwawka Landscape Unit:

Objective 1

Maintain or recruit old growth ecosystem values, in old growth management areas, that are established as shown on the attached map, dated February 5, 2002. No timber harvesting, including salvage or single tree harvesting, is to occur within old growth management areas. Road construction is not to occur within old growth management areas unless no other practicable options exist, in which case replacement old growth management areas may be required.

Objective 2

Maintain structural diversity within managed stands by retaining wildlife tree patches within the boundaries of each cut-block to meet targets for each BEC subzone in the landscape unit as indicated in the table below:

It is acceptable on a single cutblock to be +/- 2% of WTR limits, for biological reasons, provided that the average level of retention is achieved on all blocks proposed within the applicable subzone of the current forest development plan.

Wildlife Tree Retention by Biogeoclimatic Ecosystem Classification Subzone

| BEC Subzone | Total WTR % |
|--------------------|--------------------|
| CWHdm | 15 |
| CWHvm1 | 11 |
| CWHvm2 | 11 |
| MHmm | 6 |

WTR = Wildlife Tree Retention

BEC = Biogeoclimatic Ecosystem Classification

CWHdm: Coastal Western Hemlock biogeoclimatic zone, dry maritime subzone.

CWHvm1 Coastal Western Hemlock biogeoclimatic zone, very moist maritime subzone, submontane variant.

CWHvm2: Coastal Western Hemlock biogeoclimatic zone, very moist maritime subzone, montane variant.

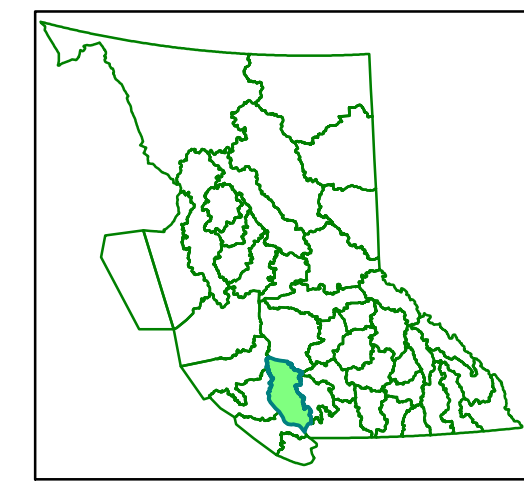
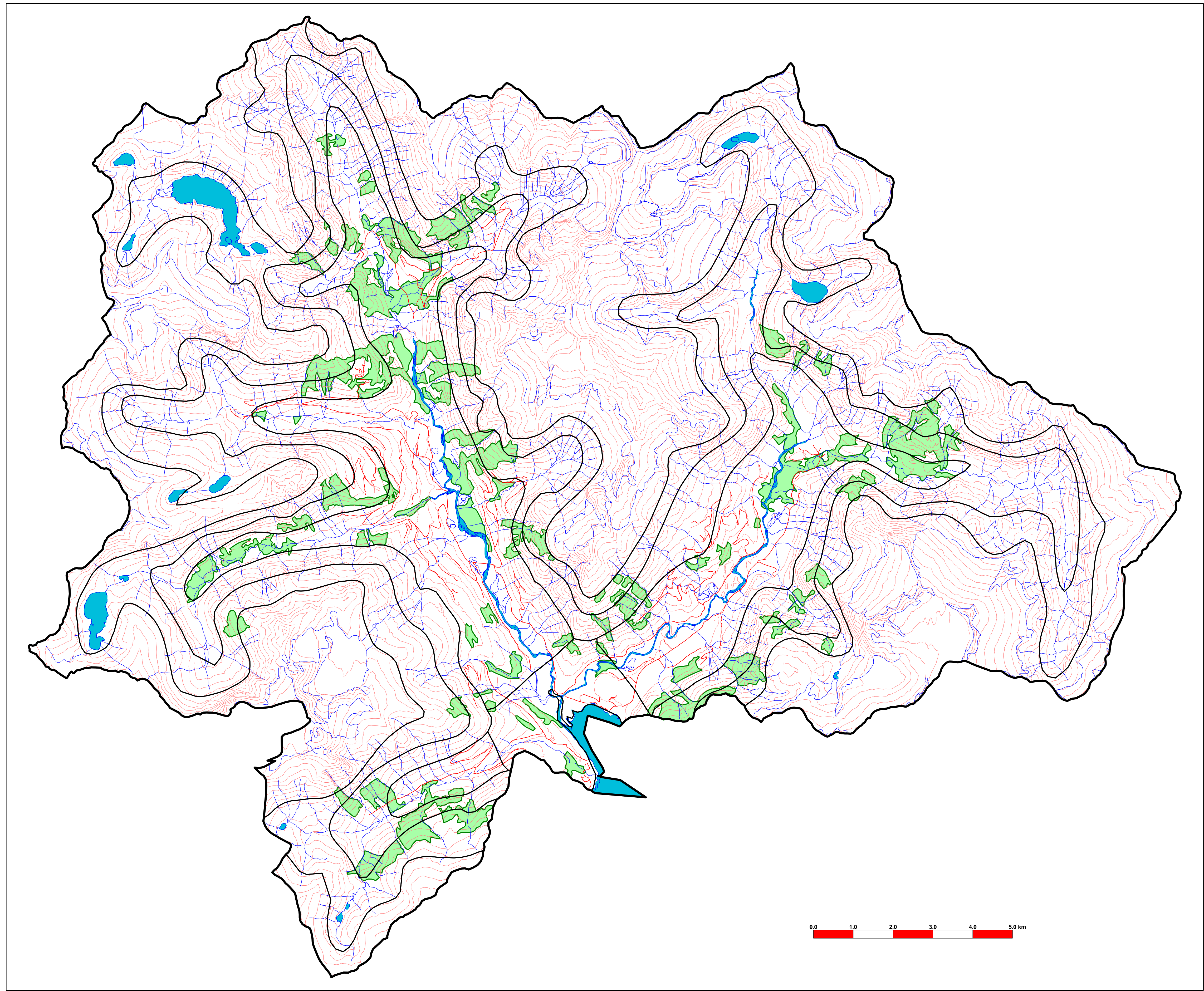
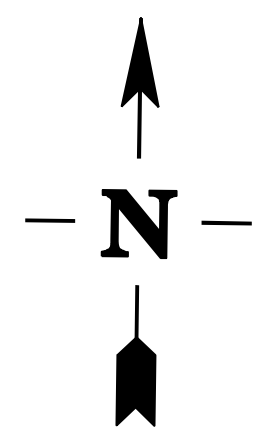
MHmm: Mountain Hemlock biogeoclimatic zone, moist maritime subzone.

LEGEND

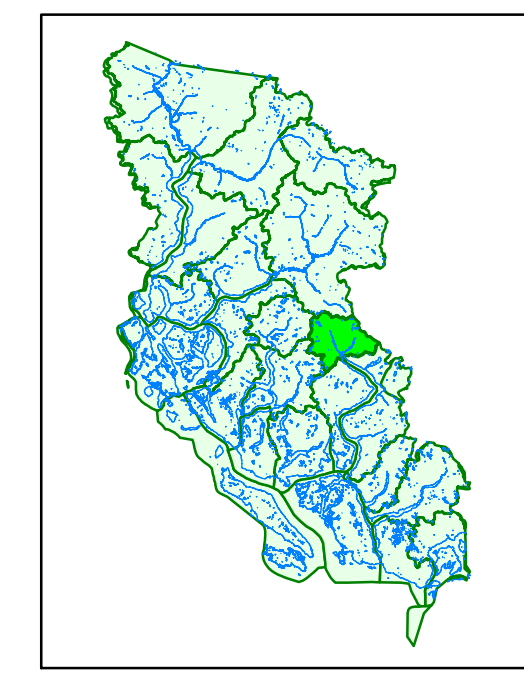
Base Information

-  Landscape Unit Boundary
-  Roads
-  Water
-  Open Water
-  Contours

-  BEC
-  **OGMA** (Old Growth Management Area)



Sunshine Coast Forest District



Scale 1 : 50,000

