



MINISTRY OF FORESTS

**ORDER TO ESTABLISH
A LANDSCAPE UNIT AND OBJECTIVES**

POWELL-DANIELS LANDSCAPE UNIT

Pursuant to Section 4 of the *Forest Practices Code of British Columbia Act*, I hereby establish the Powell-Daniels Landscape Unit, an area located in the Powell-Daniels River, Sunshine Coast Forest District, effective January 25, 2002.

The boundaries of the Powell-Daniels Landscape Unit are shown on the 1:50,000 scale map dated January 16, 2001, attached to this Order as Map 1.

In addition, I hereby establish objectives for the Powell-Daniels Landscape Unit, as attached to this Order, effective January 25, 2002.

(Original signed by)

District Manager
Sunshine Coast Forest District

January 25, 2002
Date

Legal Objectives for the Powell - Daniels Landscape Unit

Pursuant to section 4 of the Forest Practices Code of B.C. Act, the following are Landscape Unit objectives for the Powell - Daniels Landscape Unit.

Objective 1

Maintain or recruit old growth ecosystem values, in old growth management areas, that are established as shown on the attached map dated January 16, 2002. No timber harvesting, including salvage and single-tree harvesting, is to occur within old growth management areas. Road construction is not to occur within old growth management areas unless no other practicable options exist, in which case replacement old growth management areas may be required.

Objective 2

Maintain structural diversity within managed stands by retaining wildlife trees within the total area under prescription of each cut-block as described below and indicated in the table below:

- Wildlife tree patches are to include a component of the upper 10% of the diameter range of trees within the stand to be harvested.
- No harvesting, including salvage or single-tree removal, is to occur within established Wildlife Tree Patches.

Wildlife Tree Retention by Biogeoclimatic Ecosystem Classification Subzone

BEC Subzone	Total WTR (%)
CWHdm	11
CWHvm	10
MHmm	4

CWHdm: Coastal Western Hemlock biogeoclimatic zone, dry maritime subzone

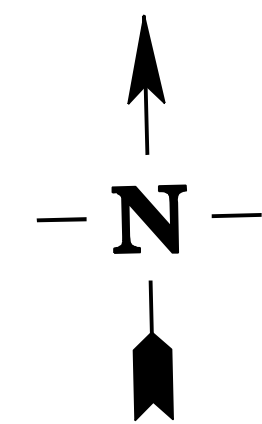
CWHvm Coastal Western Hemlock biogeoclimatic zone, very wet maritime zone

MHmm: Mountain Hemlock biogeoclimatic zone, moist maritime subzone

WTR = Wildlife Tree Retention

BEC = Biogeoclimatic Ecosystem Classification

Note: WTR is calculated at the subzone level, thus the CWHvm1 and CHWvm2 variants are combined.

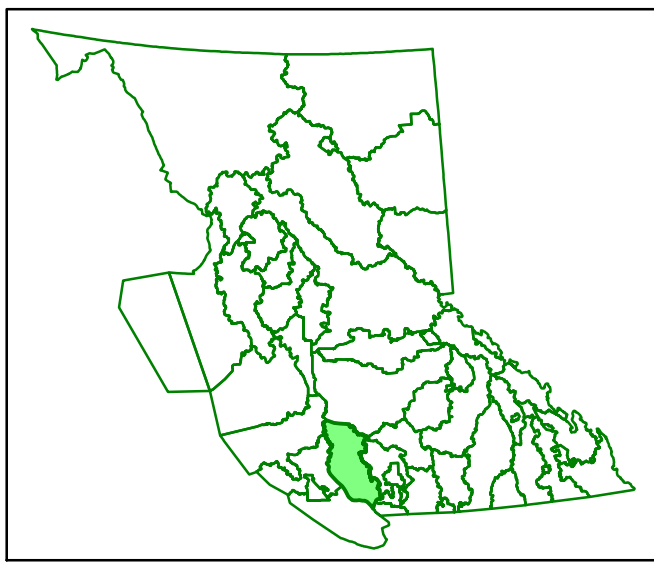


LEGEND

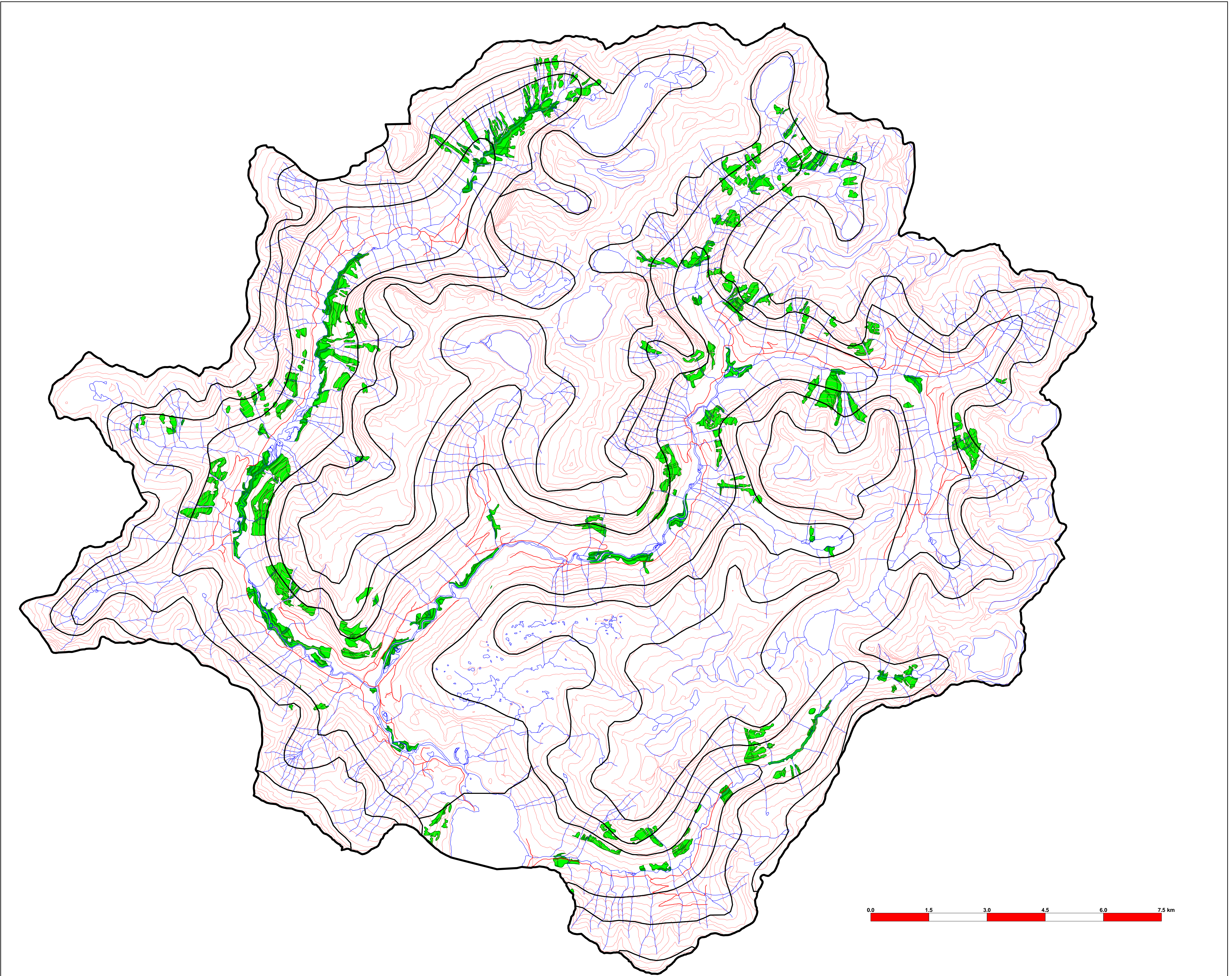
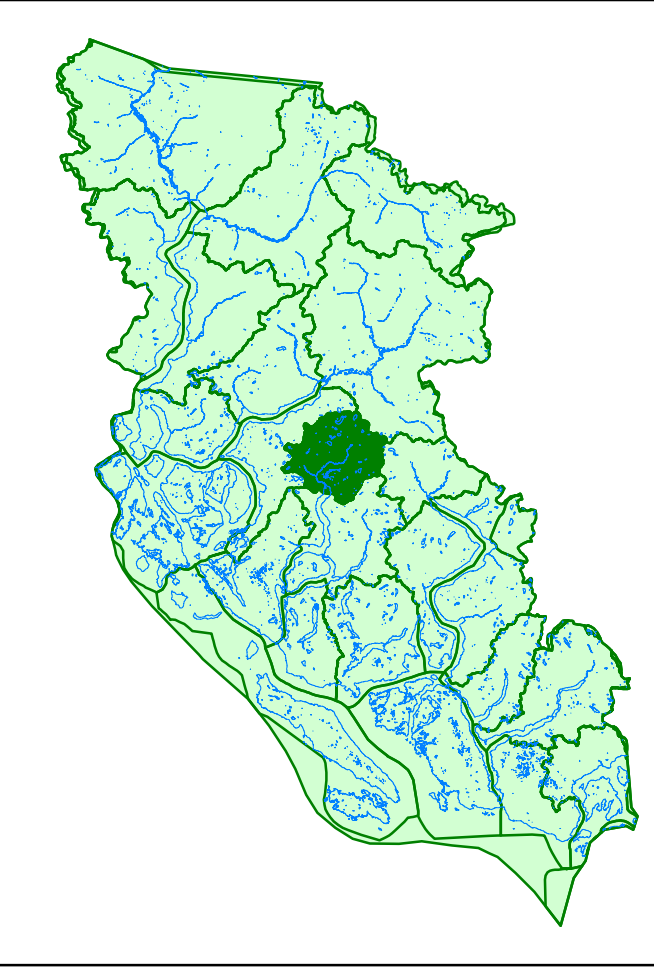
Base Information

- Landscape Unit Boundary
- Roads
- Water
- Open Water
- Contours

- BEC
- OGMA** (Old Growth Management Area)



Sunshine Coast Forest District



Scale 1 : 50,000

