

## **Preamble**

This order establishes objectives for Old Growth Management Areas within five Landscape Units located in the Sunshine Coast District.

The goal of these objectives is to contribute to biological diversity at the landscape level.

This preamble is intended to provide context and background; it does not, however, form part of the order.

# PROVINCE OF BRITISH COLUMBIA

## Ministry of Forests, Lands & Natural Resource Operations

### Ministerial Order

Land Use Objectives for Old Growth Management Areas (OGMAs) within the Homfray, Jervis, Quatam, Salmon Inlet and Southgate Landscape Units (LUs) situated within the Sunshine Coast District.

### Part 1 - Interpretation

1. Pursuant to Section 93.4 of the *Land Act*, the following objectives are established as land use objectives for the purposes of the *Forest and Range Practices Act* and apply to OGMAs within the Homfray, Jervis, Quatam, Salmon Inlet and Southgate LUs, as shown in the maps set out in Schedule A and contained in the OGMA spatial layer stored in the Geographic Warehouse (WHSE\_LAND\_USE\_PLANNING.RMP\_OGMA\_LEGAL\_CURRENT\_SVW).
2. If there is a discrepancy between the areas shown in the maps set out in the attached Schedule A and the OGMA spatial layer stored in the Geographic Warehouse (WHSE\_LAND\_USE\_PLANNING.RMP\_OGMA\_LEGAL\_CURRENT\_SVW), the areas as detailed in the OGMA spatial layer will take precedent.
3. Nothing in, under or arising out of this order either abrogates or derogates from any aboriginal rights, aboriginal title or treaty rights of any applicable First Nation, nor relieves the Province of any obligation to consult with any applicable First Nation.

## Part 2 - Objectives

### 4. Objectives for Old Growth Management Areas

- (1) Retain forests in OGMA's to the amounts set out in Table A as shown in the maps set out in Schedule A and as contained in the OGMA spatial layer stored in the Geographic Warehouse, except where necessary for the following:
  - a) Topping or pruning of trees along boundaries necessary to improve wind firmness.
  - b) Sanitation to prevent the spread of insect infestations or diseases that pose significant threat to forested areas.
  - c) Removal of danger trees, or brushing and clearing on existing roads under active tenure within the right-of-way necessary for safety purposes.
  - d) Recreation trail and site maintenance or development to address public safety.
  - e) Felling trees for guyline clearance or tailholds. Any trees felled for tailhold or guyline purposes are to be left on site to function as coarse woody debris, unless the felled trees poses a significant risk to forest health.
- (2) In addition to 4 (1) (a) to (e), harvesting within any OGMA is permitted, provided that the following apply:
  - (a) Harvesting is required to provide for:
    - i. a logical harvesting boundary, or
    - ii. road or bridge construction to access resource values beyond or adjacent to the OGMA and no other practical option for road or bridge location exists;
  - (b) The area harvested does not exceed the greater of:
    - i. two hectares, or
    - ii. 5 % of the area of the OGMA; and
  - (c) The integrity of the OGMA is maintained.
- (3) Replacement forest is required if the total area of an OGMA that is subject to the activities pursuant to 4 (1) and 4 (2) exceeds 0.5 ha. Replacement forest must be of an equivalent or greater area of forest, with equivalent or greater attributes, in order of priority:
  - (a) Contiguous to the OGMA in the same BEC subzone or variant; or,
  - (b) Contiguous to another OGMA in the same BEC subzone or variant.
- (4) Digital spatial data that show the area harvested and the area replacing the area harvested made in accordance with 4 (3) must be documented and submitted to the delegated decision maker at the end of each calendar year.

**Table A. Minimum requirement of BEC Variant to be retained by Landscape Unit**

Landscape Unit	BEC Variant	Minimum requirement of BEC Variant to be retained as OGMA
		%
<b>Homfray</b>	CWHdm	9
	CWHvm1	13
	CWHvm2	13
	CWHxm1	9
	MHmm1	19
<b>Jervis</b>	CWHdm	9
	CWHvm1	13
	CWHvm2	13
	MHmm1	19
<b>Quatam</b>	CWHdm	9
	CWHvm1	13
	CWHvm2	13
	MHmm1	19
<b>Salmon Inlet</b>	CWHdm	9
	CWHmm1	9
	CWHvm1	13
	CWHvm2	13
	MHmm1	19
	MHmm2	19
<b>Southgate</b>	CWHds1	13
	CWHms1	13
	ESFmw	13
	MHmm2	28

**Part 3 - Effective Date and Transition**

5. Application of this order

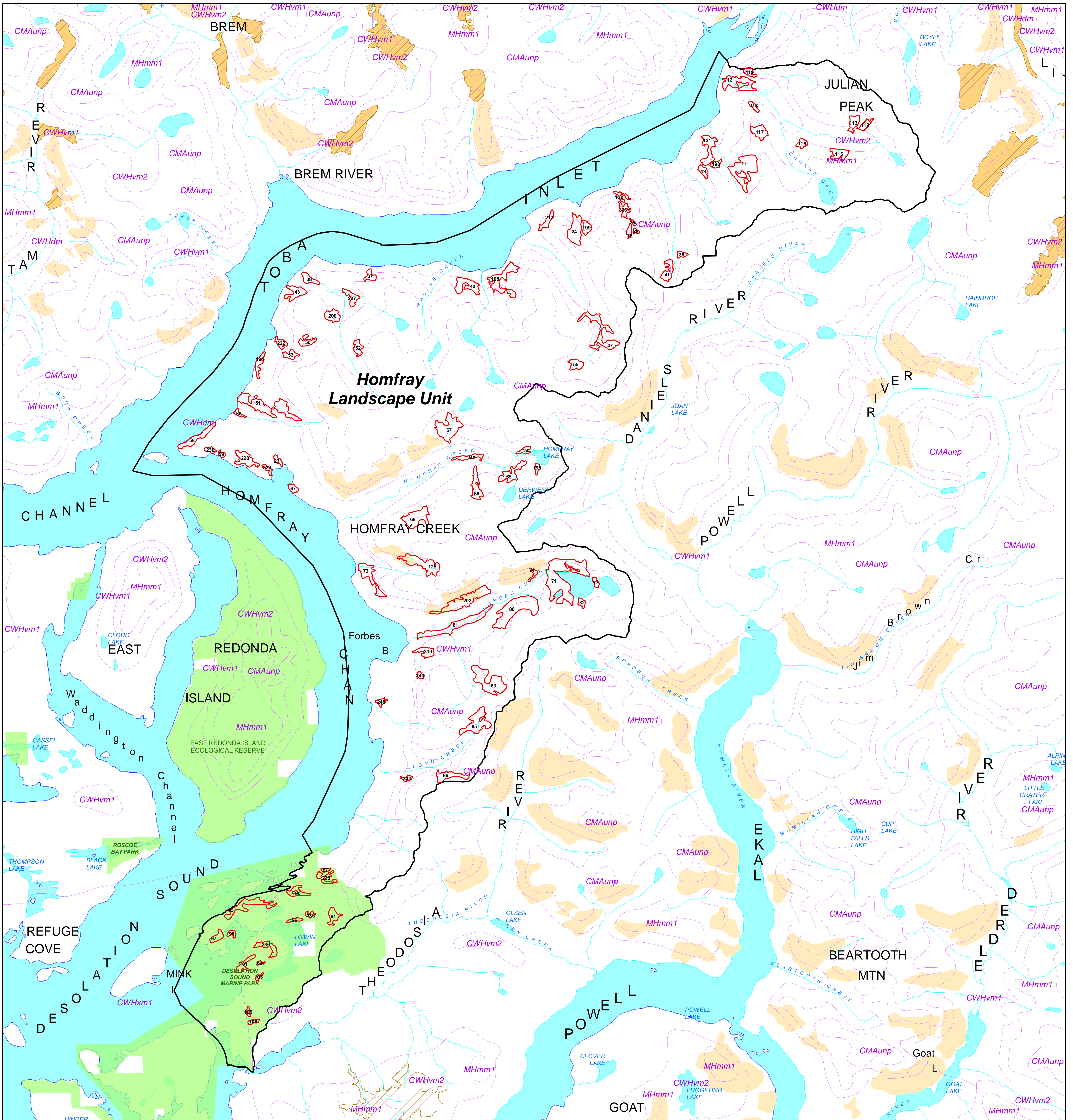
- (1) This order and the land use objectives in this order take effect on the date that notice of this order is published in the Gazette.

  
 \_\_\_\_\_  
 Heather MacKnight  
 Regional Executive Director  
 South Coast Natural Resource Region

December 22, 2014  
 \_\_\_\_\_  
 Date



# Schedule A - Homfray Landscape Unit



**Data Sources and Notes**  
 WHSE\_LAND\_USE\_PLANNING.RMP\_OGMA\_LEGAL\_CURRENT\_S1W

Scale: 1:60,000

Produced for:  
 South Coast Region

Produced by:  
**BRITISH COLUMBIA**  
 Ministry of Forests, Lands and Natural Resource Operations

Filename: Schedule A Homfray Landscape Unit  
 Projection: Datum: Alberta NAD83  
 Date: November 24, 2014  
 Prepared by: GD Sunshine Coast District

**Legend**

OGMA	Wildlife Habitat Areas - Approved
Biogeoclimatic Zones	Grizzly Bear WHA - Approved
Landscape Unit Area	Ungulate (Goat) Winter Range - Approved
Parks and Protected Areas	River or Stream
	Ocean or Lake

**Key Map**

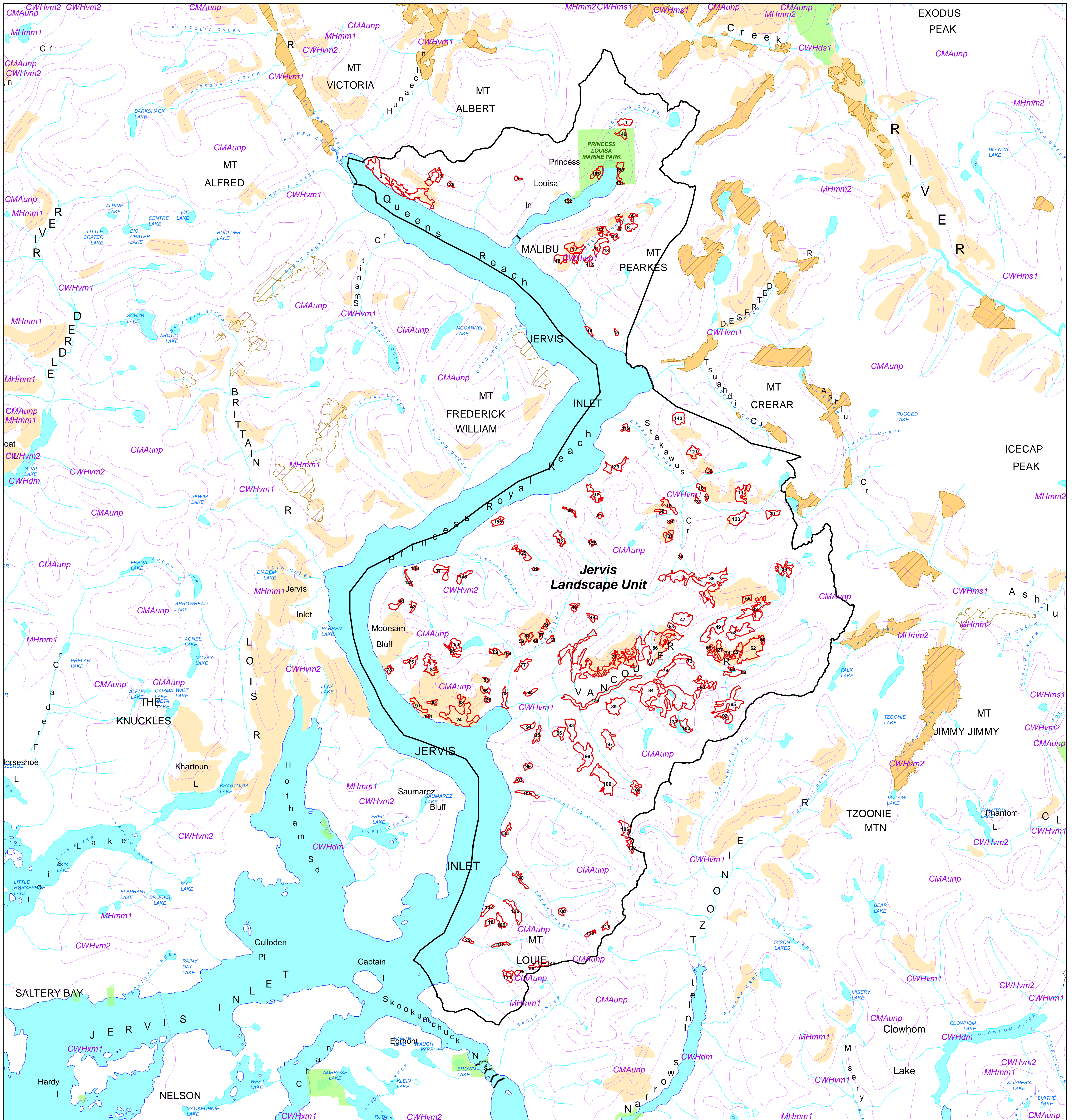
Signed on December 22, 2014

Heather MacKnight  
 Regional Executive Director  
 South Coast Region

Date:



# Schedule A - Jervis Landscape Unit



**Data Sources and Notes**  
 WHSE\_LAND\_USE\_PLANNING\_RMP\_OGMA\_LEGAL\_CURRENT\_SVV

Scale: 1:75,000

Produced for:  
 South Coast Region

Produced by:  
 BRITISH COLUMBIA  
 Ministry of Forests, Lands and Natural Resource Operations

Filename: Schedule A Jervis Landscape Unit  
 Projection: UTM - Alberta NAD83  
 Date: November 24, 2014  
 Prepared by: GD Sunshine Coast District

**Legend**

- OGMA
- Biogeoclimatic Zones
- Landscape Unit Area
- Wildlife Habitat Areas - Approved
- Grizzly Bear WHA - Approved
- Ungulate (Goat) Winter Range - Approved
- Parks and Protected Areas
- River or Stream
- Ocean or Lake

**Key Map**

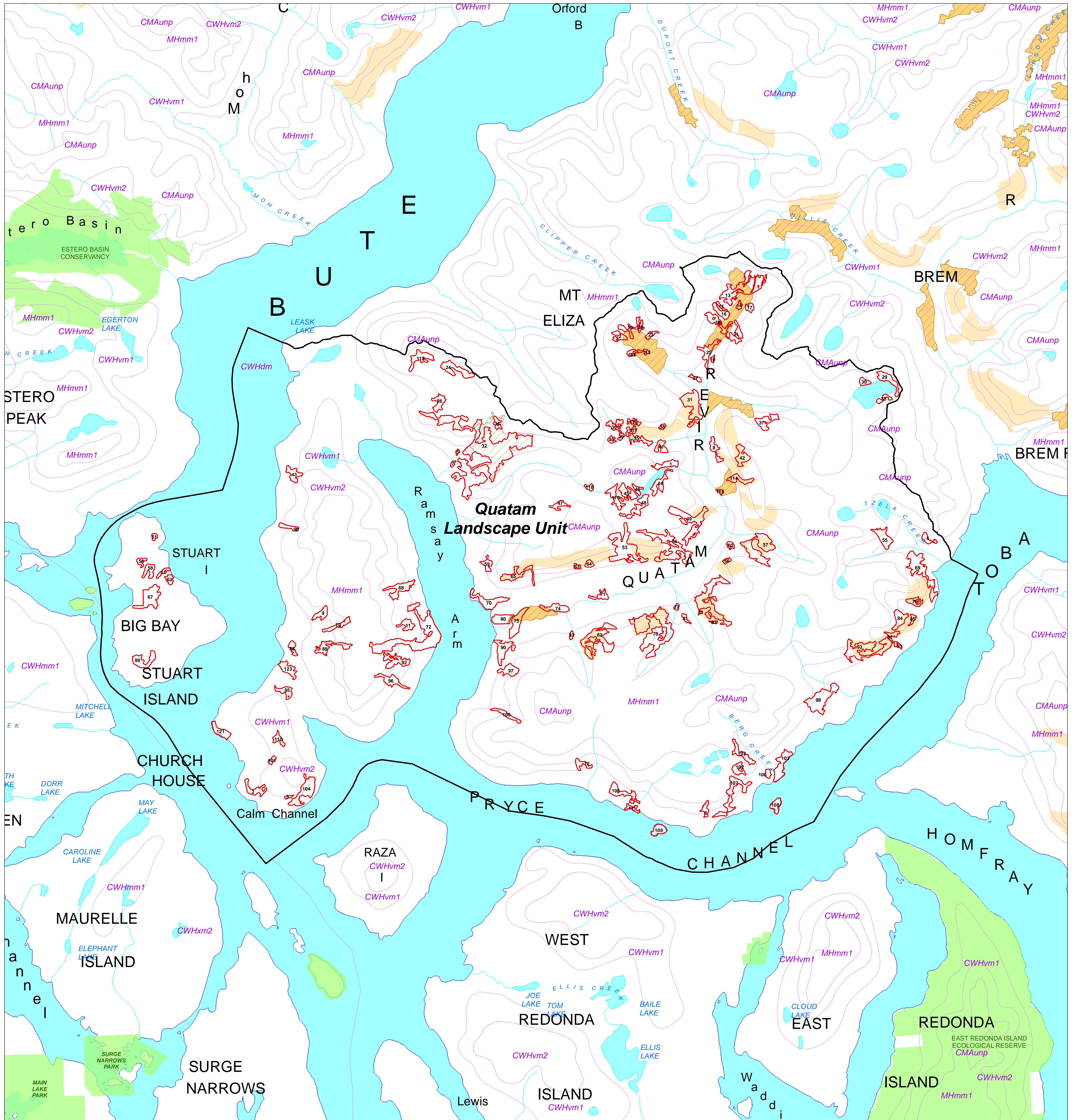
Signed on December 22, 2014

Heather MacKnight  
 Regional Executive Director  
 South Coast Region

Date:



# Schedule A - Quatam Landscape Unit



**Data Sources and Notes**  
 WHSE\_LAND\_USE\_PLANNING\_RMP\_OGMA\_LEGAL\_CURRENT\_SVV

Scale: 1:50,000

Produced for:  
 South Coast Region

Produced by:  
**BRITISH COLUMBIA**  
 Ministry of Forests, Lands and Natural Resource Operations

Filename: Schedule A Quatam Landscape Unit  
 Projection: Datum: Albers NAD83  
 Date: November 24, 2014  
 Prepared by: GD Sunshine Coast District

**Legend**

- OGMA
- Biogeoclimatic Zones
- Landscape Unit Area
- Wildlife Habitat Areas - Approved
- Grizzly Bear WHA - Approved
- Ungulate (Goat) Winter Range - Approved
- Parks and Protected Areas
- River or Stream
- Ocean or Lake

**Key Map**

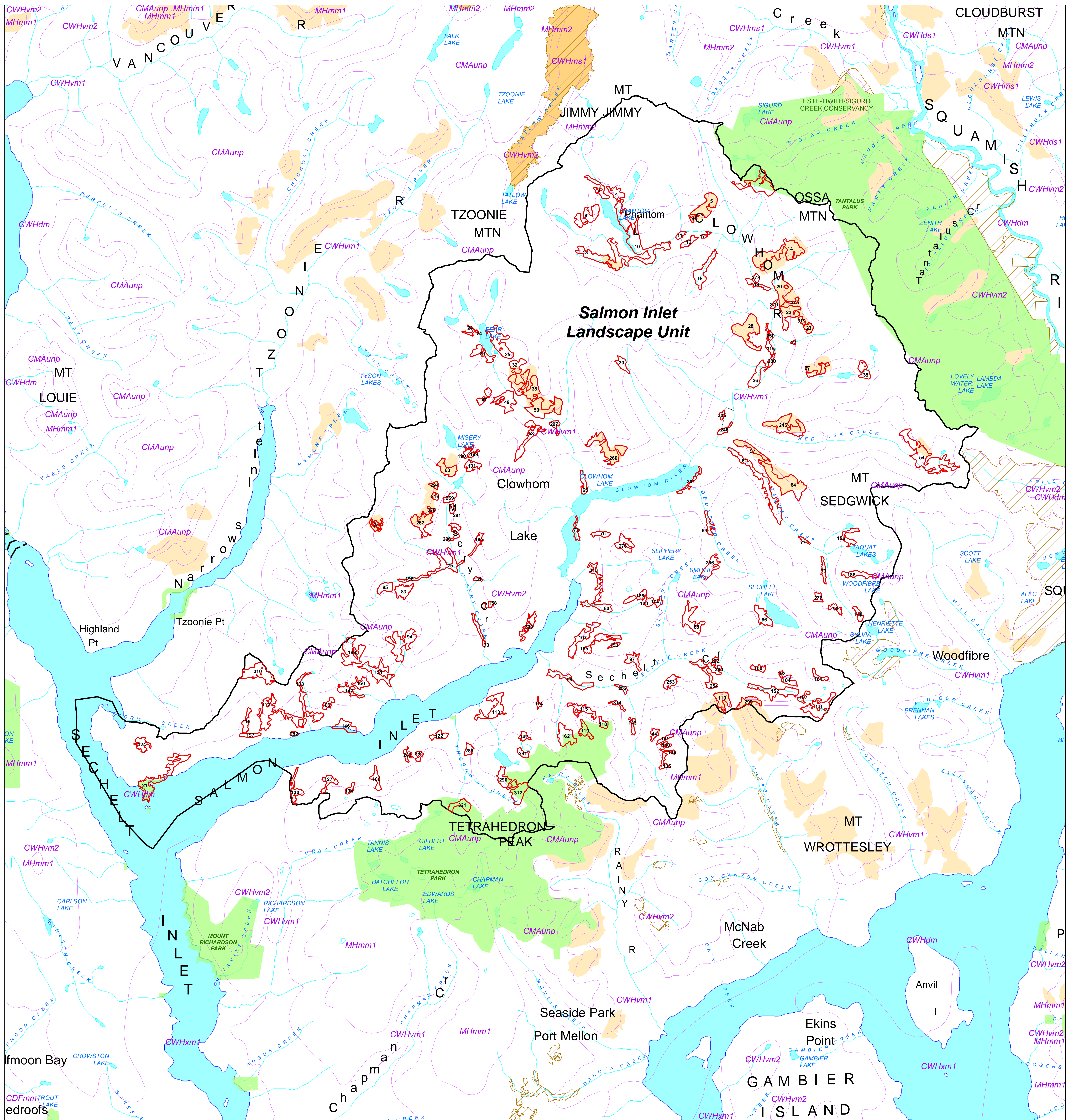
Signed on December 22, 2014

Heather MacKnight  
 Regional Executive Director  
 South Coast Region

Date:



# Schedule A - Salmon Inlet Landscape Unit



**Data Sources and Notes**  
 WHSE\_LAND\_USE\_PLANNING\_RMP\_OGMA\_LEGAL\_CURRENT\_BVV

Scale: 1:60,000

Produced for:  
 South Coast Region

Produced by:  
 BRITISH COLUMBIA  
 Ministry of Forests, Lands and Natural Resource Operations

Filename: Schedule A Salmon Inlet Landscape Unit  
 Projection: Datum: Alberta NAD83  
 Date: November 24, 2014  
 Prepared by: GD Sunshine Coast District

**Legend**

OGMA	Wildlife Habitat Areas - Approved
Biogeoclimatic Zones	Grizzly Bear WHA - Approved
Landscape Unit Area	Ungulate (Goat) Winter Range - Approved
River or Stream	Parks and Protected Areas
Ocean or Lake	

**Key Map**

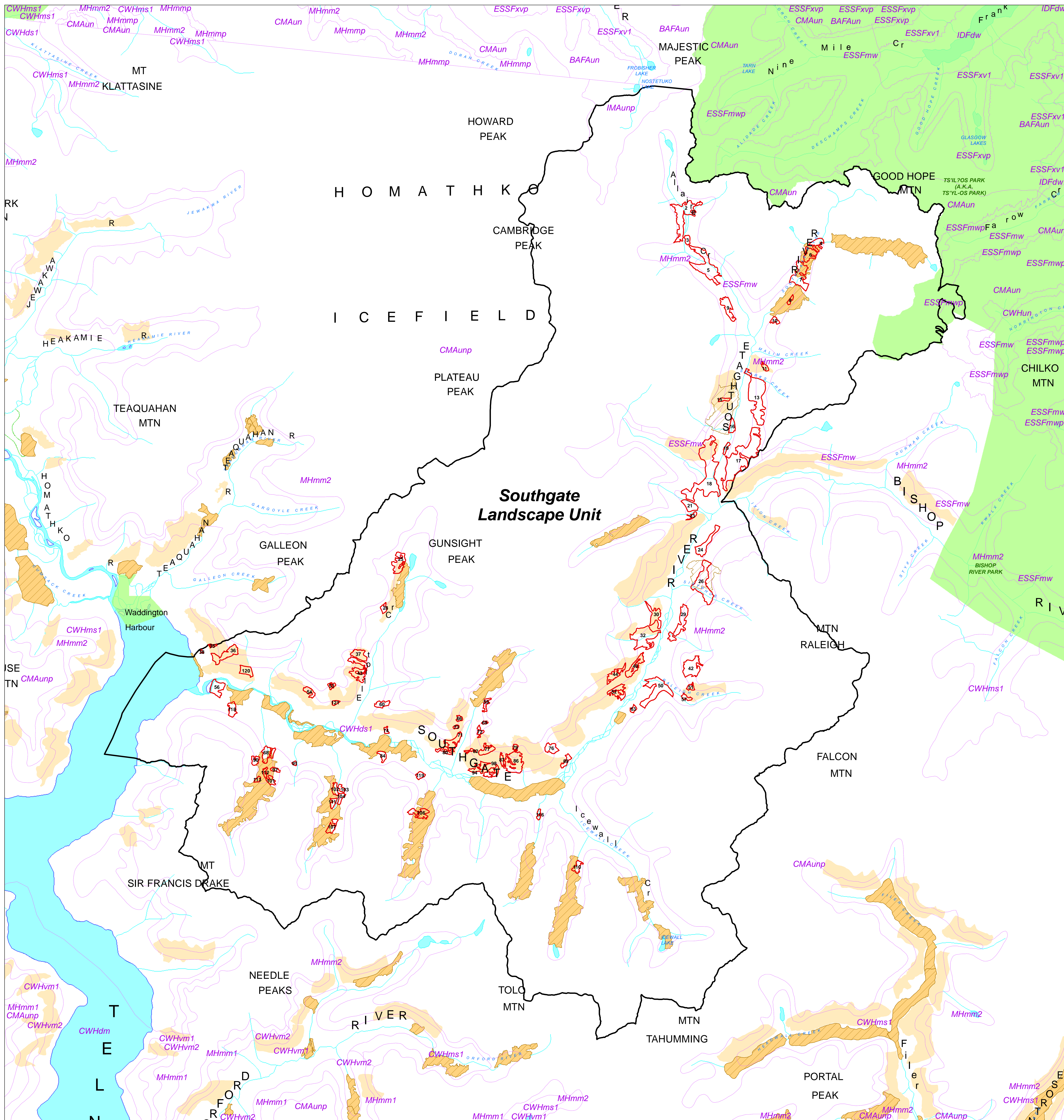
Signed on December 22, 2014

Heather MacKnight  
 Regional Executive Director  
 South Coast Region

Date:



# Schedule A - Southgate Landscape Unit



**Data Sources and Notes**  
 WHSE\_LAND\_USE\_PLANNING\_RMP\_OGMA\_LEGAL\_CURRENT\_SVV

Scale: 1:75,000

Produced for:  
 South Coast Region

Produced by:  
**BRITISH COLUMBIA**  
 Ministry of Forests, Lands and Natural Resource Operations

Filename: Schedule A Southgate Landscape Unit  
 Projection/Datum: Albers NAD83  
 Date: November 24, 2014  
 Prepared by: GCS Sunshine Coast District

**Legend**

OGMA	Wildlife Habitat Areas - Approved
Biogeoclimatic Zones	Grizzly Bear WHA - Approved
Landscape Unit Area	Ungulate (Goat) Winter Range - Approved
River or Stream	Parks and Protected Areas
Ocean or Lake	

**Key Map**

Signed on December 22, 2014  
 Heather MacKnight  
 Regional Executive Director  
 South Coast Region

Date: