



MINISTRY OF FORESTS

**ORDER TO ESTABLISH
A LANDSCAPE UNIT AND OBJECTIVES**

HOMATHKO LANDSCAPE UNIT

Pursuant to Section 4 of the *Forest Practices Code of British Columbia Act*, I hereby establish the Homathko Landscape Unit, an area located in the Homathko River, Sunshine Coast Forest District, effective September 27, 2001.

The boundaries of the Homathko Landscape Unit are shown on the 1:50,000 scale map dated September 27, 2001, attached to this Order as Map 1.

In addition, I hereby establish objectives for the Homathko Landscape Unit, as attached to this Order, effective September 27, 2001.

(Original signed by)

District Manager
Sunshine Coast Forest District

September 27, 2000
Date

Legal Objectives for the Homathko Landscape Unit

Pursuant to section 4 of the Forest Practices Code of B.C. Act, the following are landscape unit objectives for the Homathko Landscape Unit.

Objective 1

Maintain or recruit old growth ecosystem values, in old growth management areas, that are established as shown on the attached map dated September 27, 2001. No timber harvesting, including salvage and single-tree harvesting, is to occur within old growth management areas. Road construction is not to occur within old growth management areas unless no other practicable options exist, in which case replacement old growth management areas may be required.

Objective 2

Maintain structural diversity within managed stands by retaining wildlife trees within the boundaries of each cut-block to meet targets for each BEC subzone in the landscape unit as indicated in the table below:

- All non-contributing areas with high value wildlife trees should be used first to achieve the overall cutblock target.
- Wildlife tree patches are to include the upper 10% of the diameter range of trees within the stand to be harvested.
- No harvesting, including salvage or single-tree harvesting, is to occur within established Wildlife Tree Patches.

**Wildlife Tree Retention by Biogeoclimatic
Ecosystem Classification Subzone**

BEC Subzone	Total Crown Forest Area (ha)	Total WTR (%)
CWHds1	16011.5	9
CWHms1	12722.9	5
MHmm2	54064.4	4
Totals	82798.8	

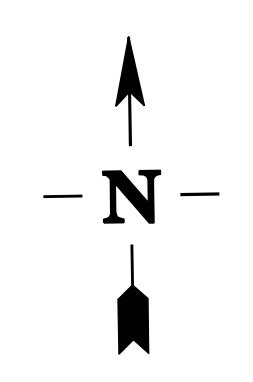
CWHds1: Coastal Western Hemlock biogeoclimatic zone, southern dry subarctic variant

CWHms1: Coastal Western Hemlock biogeoclimatic zone, southern moist subarctic variant.

MHmm2: Mountain Hemlock biogeoclimatic zone, moist maritime subzone, leeward variant.






WTR = Wildlife Tree Retention

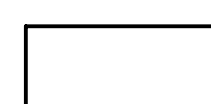


BEC = Biogeoclimatic Ecosystem Classification

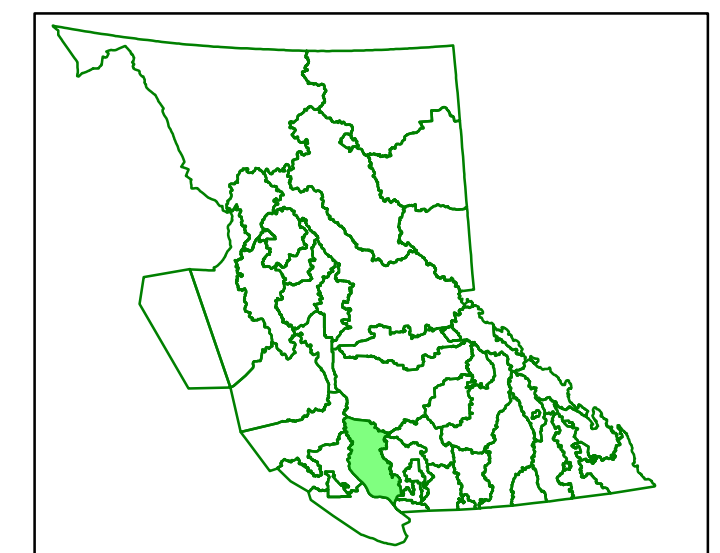


LEGEND

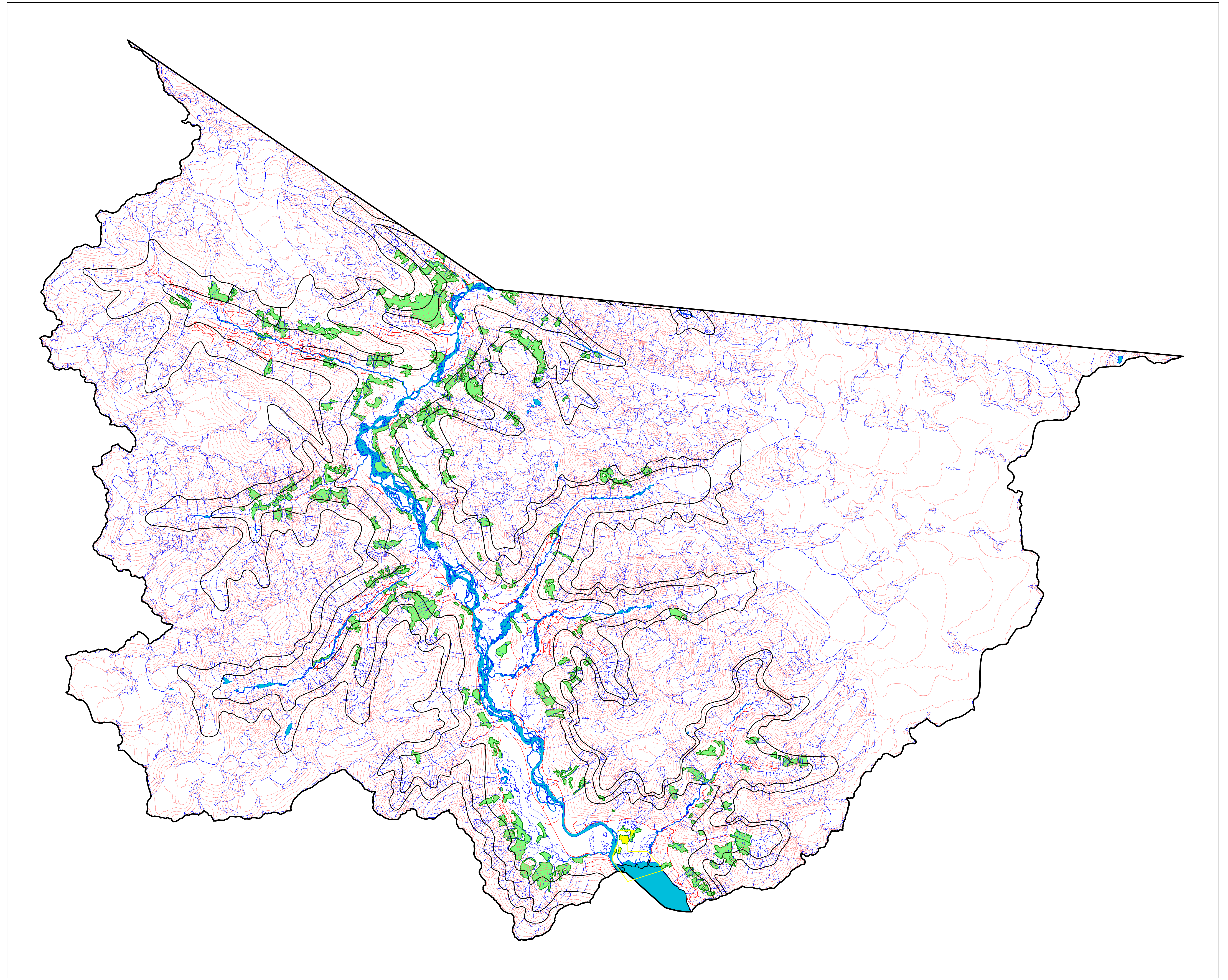
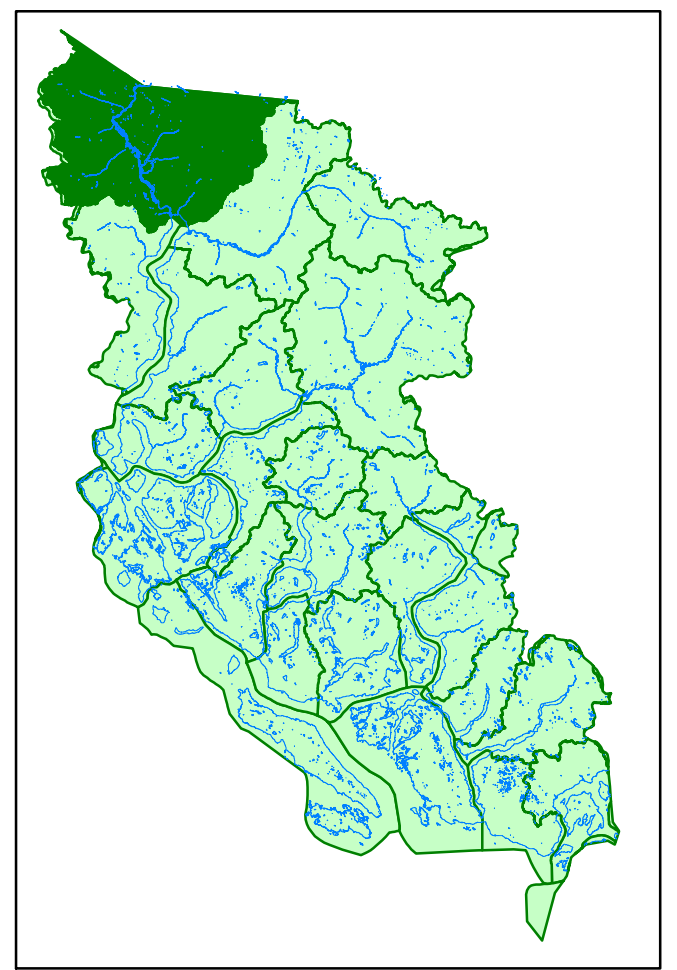
Base Information

-  Landscape Unit Boundary
-  Roads
-  Water
-  Open Water
-  Contours

-  BEC
-  **OGMA** (Old Growth Management Area)
-  **OGMA** (Protected Area Contribution)



Sunshine Coast Forest District



Scale 1 :80,000

