

Preamble

This order establishes objectives for Old Growth Management Areas within five Landscape Units located in the Sunshine Coast District.

The goal of these objectives is to contribute to biological diversity at the landscape level.

This preamble is intended to provide context and background; it does not, however, form part of the order.

PROVINCE OF BRITISH COLUMBIA

Ministry of Forests, Lands and Natural Resource Operations

Ministerial Order

Land Use Objectives for Old Growth Management Areas (OGMAs) within the Bute West, Bute East, Cortes, Brittain, and Howe Landscape Units (LUs) situated within the Sunshine Coast District.

Part 1 - Interpretation

1. Pursuant to Section 93.4 of the *Land Act*, the following objectives are established as land use objectives for the purposes of the *Forest and Range Practices Act* and apply to OGMAs within the Bute West, Bute East, Cortes, Brittain, and Howe LUs, as shown in the maps set out in Schedule A and contained in the OGMA spatial layer stored in the Geographic Warehouse
(WHSE_LAND_USE_PLANNING.RMP_OGMA_LEGAL_CURRENT_SVW)
2. If there is a discrepancy between the areas shown in the maps set out in the attached Schedule A and the OGMA spatial layer stored in the Geographic Warehouse
(WHSE_LAND_USE_PLANNING.RMP_OGMA_LEGAL_CURRENT_SVW), the areas as detailed in the OGMA spatial layer will take precedent.
3. Nothing in, under or arising out of this order either abrogates or derogates from any aboriginal rights, aboriginal title or treaty rights of any applicable First Nation, nor relieves the Province of any obligation to consult with any applicable First Nation.

Part 2 - Objectives

4. Objectives for Old Growth Management Areas

- (1) Retain forests in OGMA to the amounts set out in Table A as shown in the maps set out in Schedule A and as contained in the OGMA spatial layer stored in the Geographic Warehouse, except where necessary for the following:
 - a) Topping or pruning of trees along boundaries necessary to improve wind firmness.
 - b) Sanitation to prevent the spread of insect infestations or diseases that pose significant threat to forested areas.
 - c) Removal of danger trees, or brushing and clearing on existing roads under active tenure within the right-of-way necessary for safety purposes.
 - d) Recreation trail and site maintenance or development to address public safety.
 - e) Felling trees for guyline clearance or tailholds. Any trees felled for tailhold or guyline purposes are to be left on site to function as coarse woody debris, unless the felled trees poses a significant risk to forest health.
- (2) In addition to 4(1) (a) to (e), harvesting within any OGMA is permitted, provided that the following apply:
 - (a) Harvesting is required to provide for:
 - i. a logical harvesting boundary, or
 - ii. road or bridge construction to access resource values beyond or adjacent to the OGMA and no other practicable option for road or bridge location exists;
 - (b) The area harvested does not exceed the greater of:
 - i. two hectares, or
 - ii. 5 % of the area of the OGMA; and
 - (c) The integrity of the OGMA is maintained.
- (3) Replacement forest is required if the total area of an OGMA that is subject to the activities pursuant to 4(1) and 4(2) exceeds 0.5 ha. Replacement forest must be of an equivalent or greater area of forest, with equivalent or greater attributes, in order of priority:
 - (a) Contiguous to the OGMA in the same BEC subzone or variant; or,
 - (b) Contiguous to another OGMA in the same BEC subzone or variant.
- (4) Digital spatial data that show the area harvested and the area replacing the area harvested made in accordance with 4(3) must be documented and submitted to the delegated decision maker at the end of each calendar year.

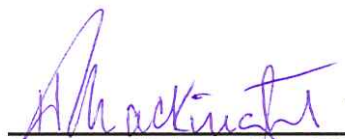
Table A. Minimum requirement of BEC Variant to be retained by Landscape Unit

Landscape Unit	BEC Variant	Minimum requirement of BEC Variant to be retained as OGMA (%)
Brittain	CWHdm	9
	CWHvm1	13
	CWHvm2	13
	MHmm1	19
	MHmm2	19
Bute East	CWHdm	9
	CWHds1	9
	CWHms1	9
	CWHvm1	13
	CWHvm2	13
	MHmm1	19
	MHmm2	19
Bute West	CWHdm	9
	CWHds1	9
	CWHms1	9
	CWHvm1	13
	CWHvm2	13
	MHmm1	19
	MHmm2	19
Cortes	CWHdm	9
	CWHmm1	9
	CWHvm1	13
	CWHvm2	13
	CWHxm1	9
	CWHxm2	9
	MHmm1	19
Howe	CWHdm	9
	CWHvm1	13
	CWHvm2	13
	CWHxm1	9
	MHmm1	19

Part 3 - Effective Date and Transition

5. Application of this order

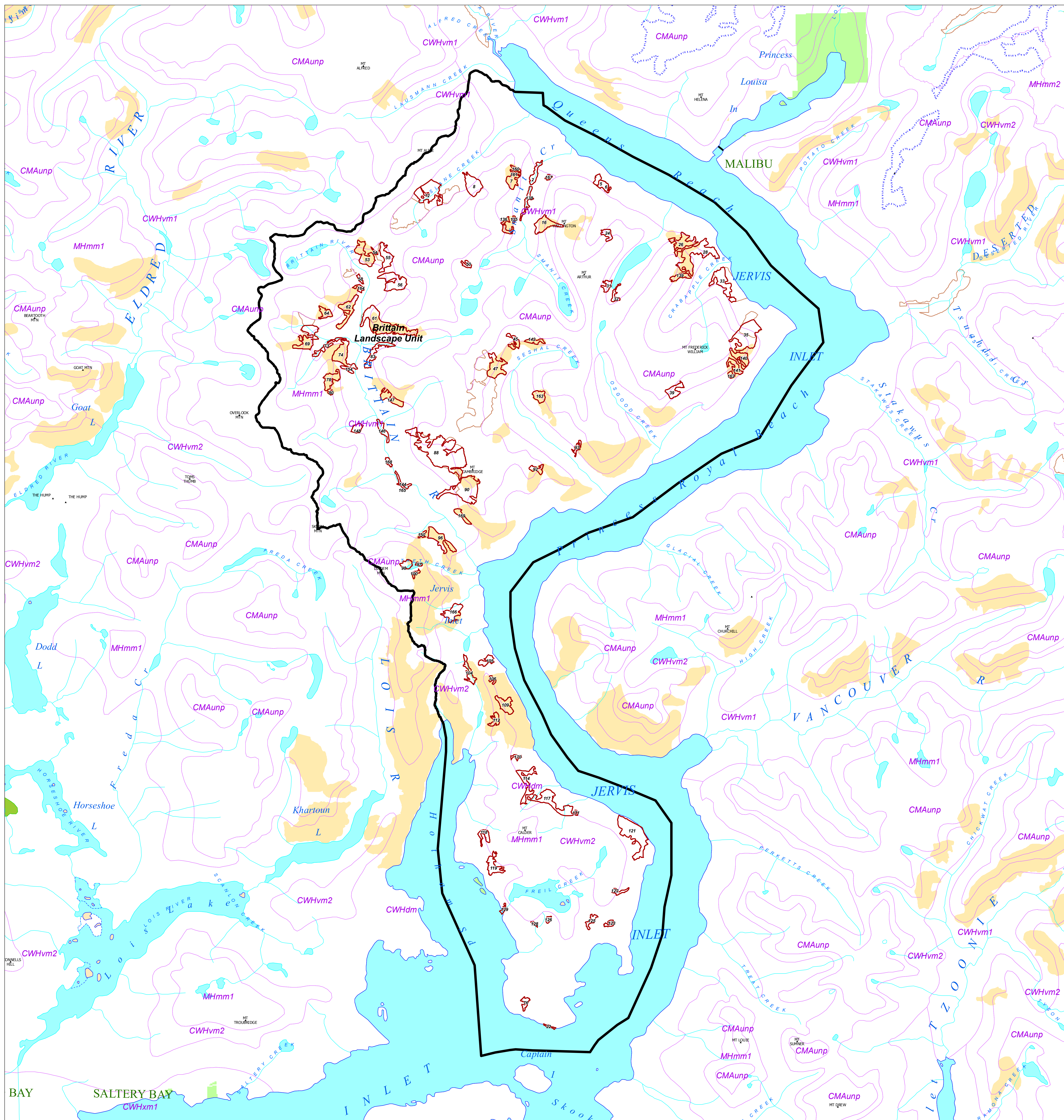
This order and the land use objectives in this order take effect on the date that notice of this order is published in the Gazette.



Regional Executive Director
 Ministry of Forests, Lands and
 Natural Resource Operations, South Coast Region

July 10, 2012
Date

OGMAs in Britain Landscape Unit




Data Sources and Notes

Layer Name (Source):

Scale: 1:60,000

Produced for:
South Coast Region

Produced by:

 Ministry of Forests, Lands and Natural Resource Operations

File Name: May 17, 2012
 Projection: Datum: Albers NAD83
 Date: May 17, 2012
 Prepared by: LG

Legend

OGMAs	Wildlife Habitat Areas - Approved
Biogeoclimatic Zones	Grizzly Bear Winter Range
Landscape Unit Area	Ungulate Winter Range - Approved
Ferry Route	Goat Winter Range
Road	Ocean or Lake
River or Stream	Parks and Protected Areas

Key Map

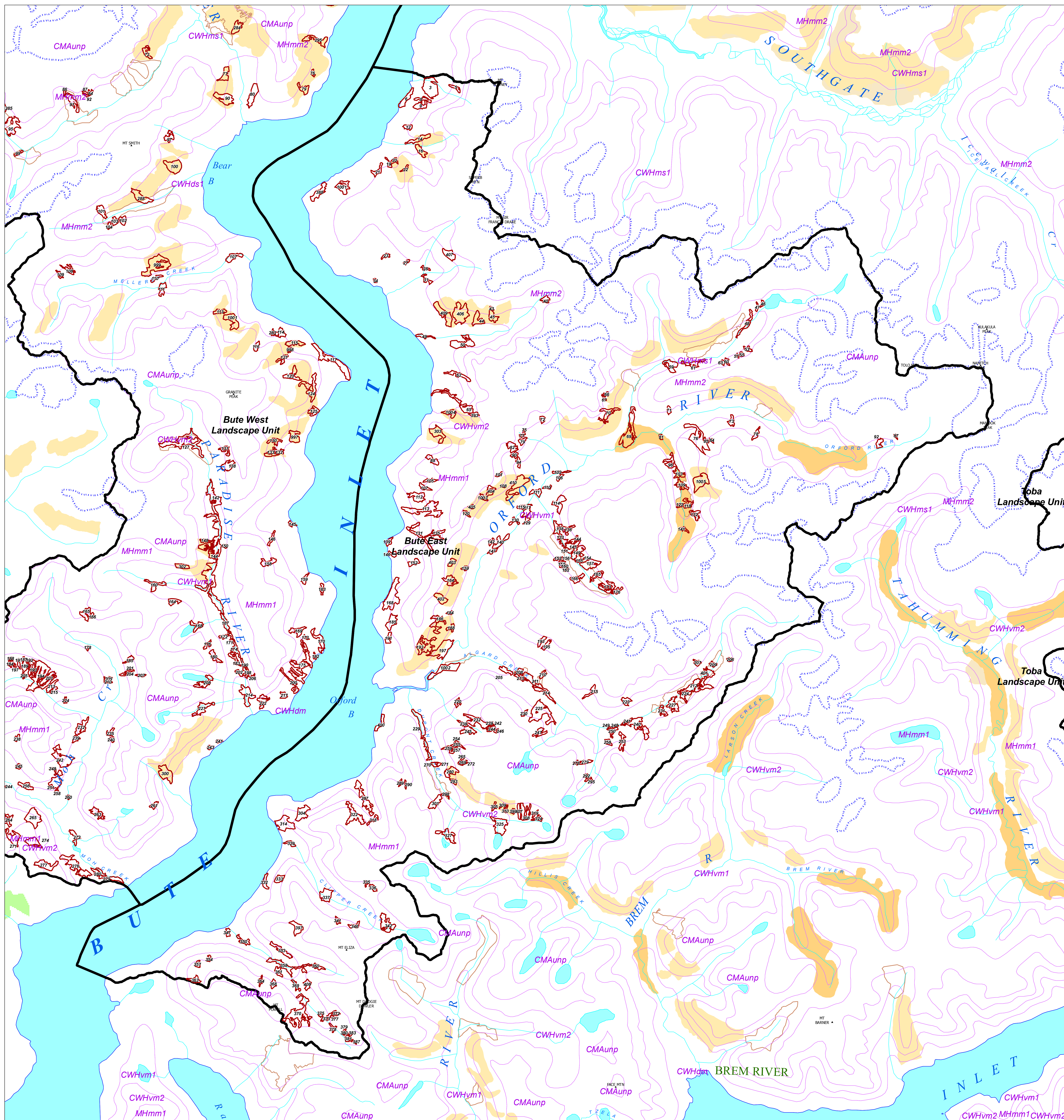
APPROVED

Heather MacKnight
Regional Executive Director
South Coast Region

July 10, 2012

Date:

OGMAs in Bute East Landscape Unit



Data Sources and Notes

Layer Name (Source):

Scale: 1:60,000

Produced for:
South Coast Region

Produced by:
BRITISH COLUMBIA
Ministry of Forests, Lands and Natural Resource Operations

File Name: May 17, 2012
Projection: Datum: Albers NAD83
Date: May 17, 2012
Prepared by: LG

Legend

- OGMAs
- Biogeoclimatic Zones
- Landscape Unit Area
- Ferry Route
- Road
- River or Stream
- Wildlife Habitat Areas - Approved
- Grizzly Bear Winter Range
- Ungulate Winter Range - Approved
- Goat Winter Range
- Ocean or Lake
- Parks and Protected Areas

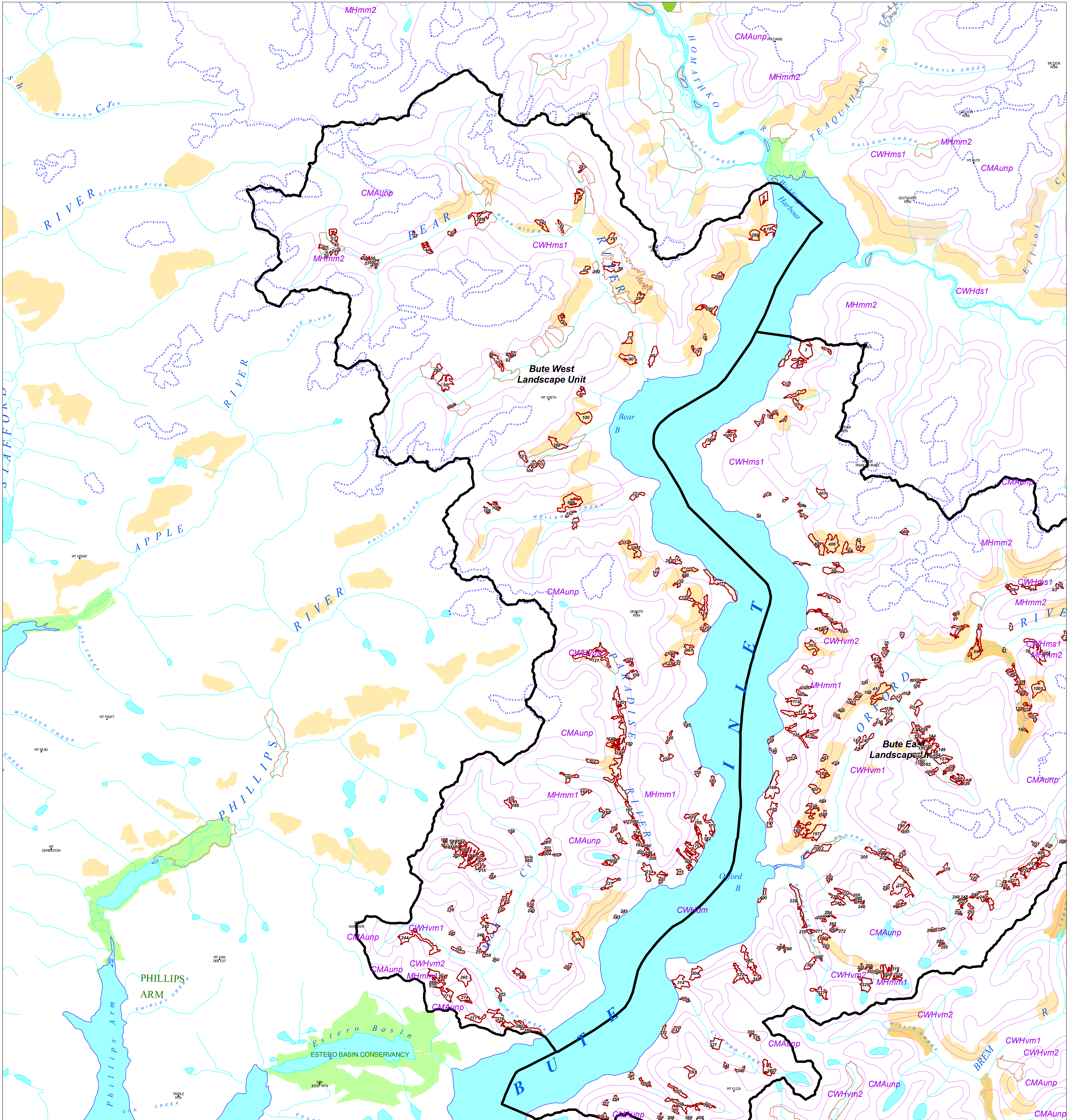
Key Map

APPROVED

Heather MacKnight
Regional Executive Director
South Coast Region

July 10, 2012
Date:

OGMAs in Bute West Landscape Unit



Data Sources and Notes

Layer Name (Source):

Scale: 1:70,000

Produced for:
South Coast Region

Produced by:
BRITISH COLUMBIA
Ministry of Forests, Lands and Natural Resource Operations

File Name: May 17, 2012
Project/Datum: Albers NAD83
Date: May 17, 2012
Prepared by: L.G.

Legend

OGMAs	Wildlife Habitat Areas - Approved
Biogeoclimatic Zones	Grizzly Bear Winter Range
Landscape Unit Area	Ungulate Winter Range - Approved
Ferry Route	Goat Winter Range
Road	Ocean or Lake
River or Stream	Parks and Protected Areas

Key Map

APPROVED

Heather MacKnight
Regional Executive Director
South Coast Region

Date: July 10, 2012

OGMAs in Cortes Landscape Unit



Data Sources and Notes

Layer Name (Source):

Scale: 1:60,000

Produced for:
South Coast Region

Produced by:
BRITISH COLUMBIA
Ministry of Forests, Lands and Natural Resource Operations

File Name: May 17, 2012
Project/Datum: Albers NAD83
Date: May 17, 2012
Prepared by: LG

Legend

OGMAs	Wildlife Habitat Areas - Approved
Biogeoclimatic Zones	Grizzly Bear Winter Range
Landscape Unit Area	Ungulate Winter Range - Approved
Ferry Route	Goat Winter Range
Road	Ocean or Lake
River or Stream	Parks and Protected Areas

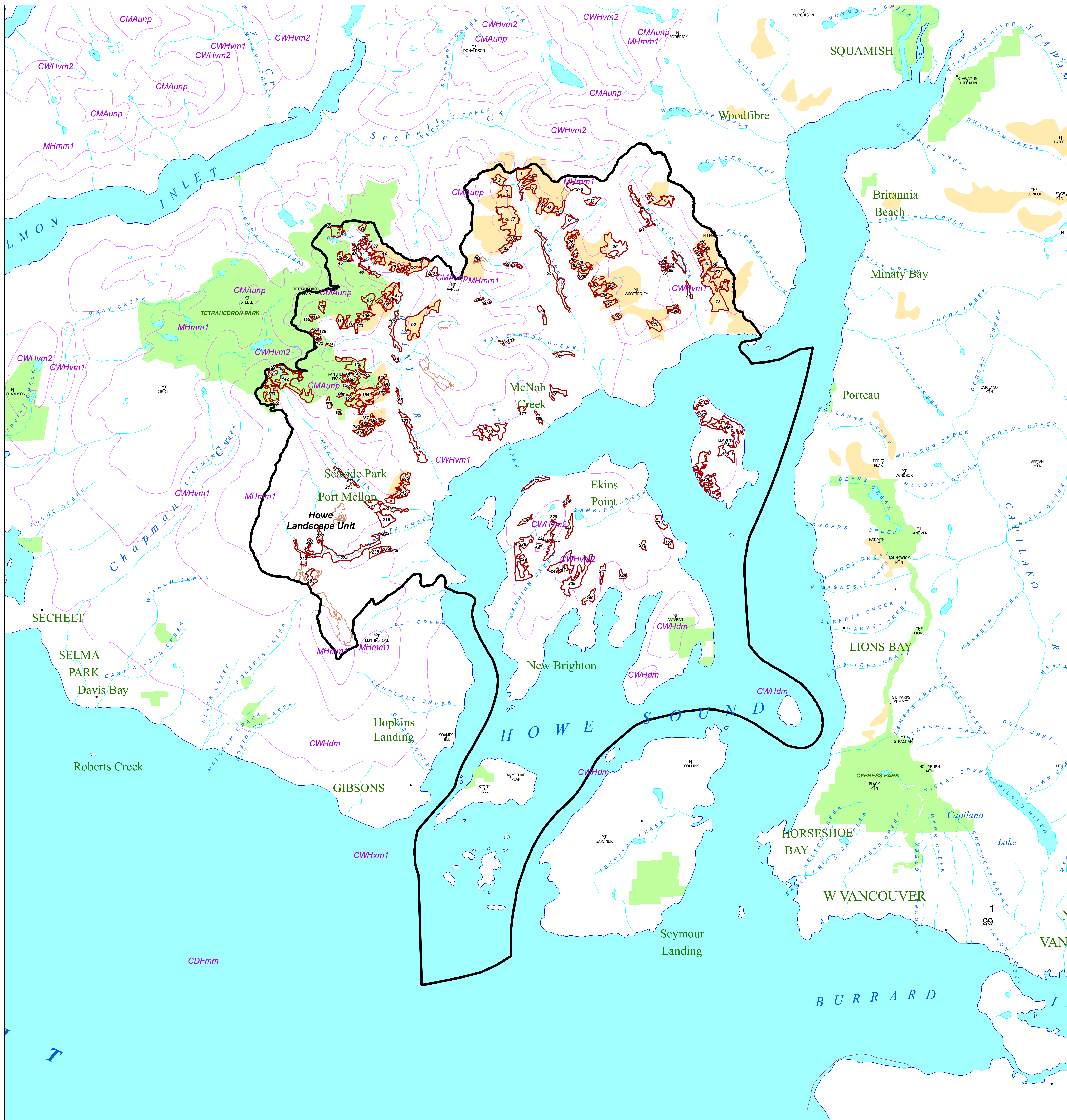
Key Map

APPROVED

Heather MacKnight
Regional Executive Director
South Coast Region

July 10, 2012
Date:

OGMAs in Howe Landscape Unit



Data Sources and Notes

Layer Name (Source):

Scale: 1:60,000

Produced for:
South Coast Region

Produced by:
BRITISH COLUMBIA
Ministry of Forests, Lands and Natural Resource Operations

File Name: May 17, 2012
Projection: Datum: Albers NAD83
Date: May 17, 2012
Prepared by: L.G.

Legend

- OGMAs
- Biogeoclimatic Zones
- Landscape Unit Area
- Ferry Route
- Road
- River or Stream
- Wildlife Habitat Areas - Approved
- Grizzly Bear Winter Range
- Ungulate Winter Range - Approved
- Goat Winter Range
- Ocean or Lake
- Parks and Protected Areas

Key Map

APPROVED

Heather MacKnight
Regional Executive Director
South Coast Region

July 10, 2012

Date: