



**MINISTRY OF FORESTS**

**ORDER TO ESTABLISH  
A LANDSCAPE UNIT AND OBJECTIVES**

**BUNSTER LANDSCAPE UNIT**

Pursuant to Section 4 of the *Forest Practices Code of British Columbia Act*, I hereby establish the Bunster Landscape Unit, an area located in the Bunster Hills, Sunshine Coast Forest District, effective September 22, 2000.

The boundaries of the Bunster Landscape Unit are shown on the 1:50,000 scale map, dated September 5, 2000, attached to this Order.

In addition, I hereby establish objectives for the Bunster Landscape Unit, as attached to this Order, effective September 22, 2000.

(Original signed by)

\_\_\_\_\_  
**District Manager**  
**Sunshine Coast Forest District**

September 21, 2000  
**Date**

# Objectives for the Bunster Landscape Unit

Pursuant to section 4 of the Forest Practices Code of B.C. Act, the following are landscape unit objectives for the Bunster Landscape Unit.

## Objective 1

Maintain or recruit old growth ecosystem values, in old growth management areas, that are established as shown on the attached Map 1. No timber harvesting, including salvage, is to occur within old growth management areas. Road construction is not to occur within old growth management areas unless no other practicable options exist, in which case replacement old growth management areas may be required.

## Objective 2

Maintain structural diversity within managed stands by retaining wildlife trees within the boundaries of each cut-block to meet targets for each BEC subzone in the landscape unit as indicated in the table below:

- All non-contributing areas with high value wildlife trees must be used first to achieve the overall cutblock target.
- 25 per cent of the % WTR will come from high value wildlife trees in the timber harvesting landbase averaged over the cutblocks in the forest development plan
- It is acceptable on a single cutblock to be +/- 2% WTR limits, for biological reasons, provided that the average level of retention is achieved on all blocks proposed within the applicable sub zone of the current forest development plan.
- 

**Wildlife Tree Retention by Biogeoclimatic Ecosystem Classification Subzone**

BEC Subzone	% WTR
CDFmm	7
CWHxm1	8
CWHdm	10
CWHvm2	10
MHmm1	6

WTR = Wildlife Tree Retention

BEC = Biogeoclimatic Ecosystem Classification

**CDFmm:** Coastal Douglas-fir biogeoclimatic zone, moist maritime subzone.

**CWHxm1:** Coastal Western Hemlock biogeoclimatic zone, very dry maritime subzone, windward variant.

**CWHdm:** Coastal Western Hemlock biogeoclimatic zone, dry maritime subzone.

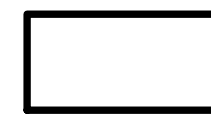



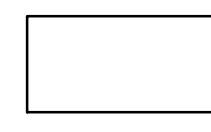
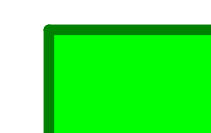
**CWHvm2:** Coastal Western Hemlock biogeoclimatic zone, very moist maritime subzone, montane variant.

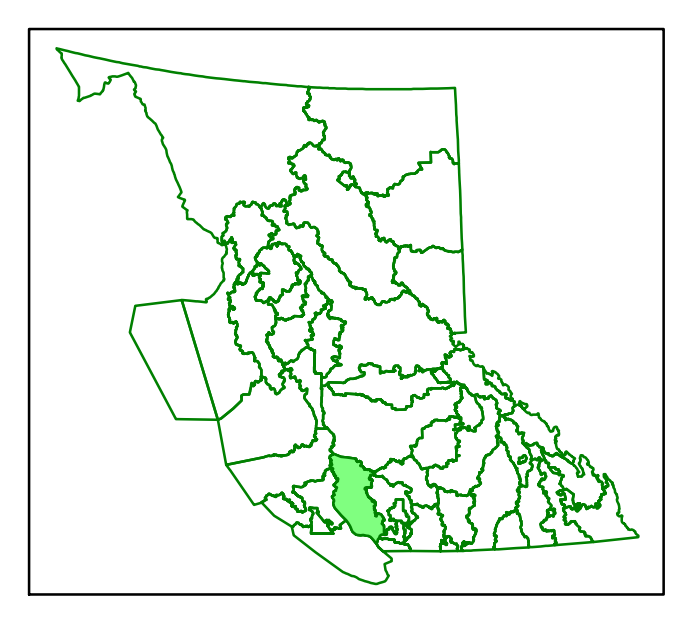
**MHmm1:** Mountain Hemlock biogeoclimatic zone, moist maritime subzone, variant 1-windward.

These objectives are without prejudice to all First Nations' interests.

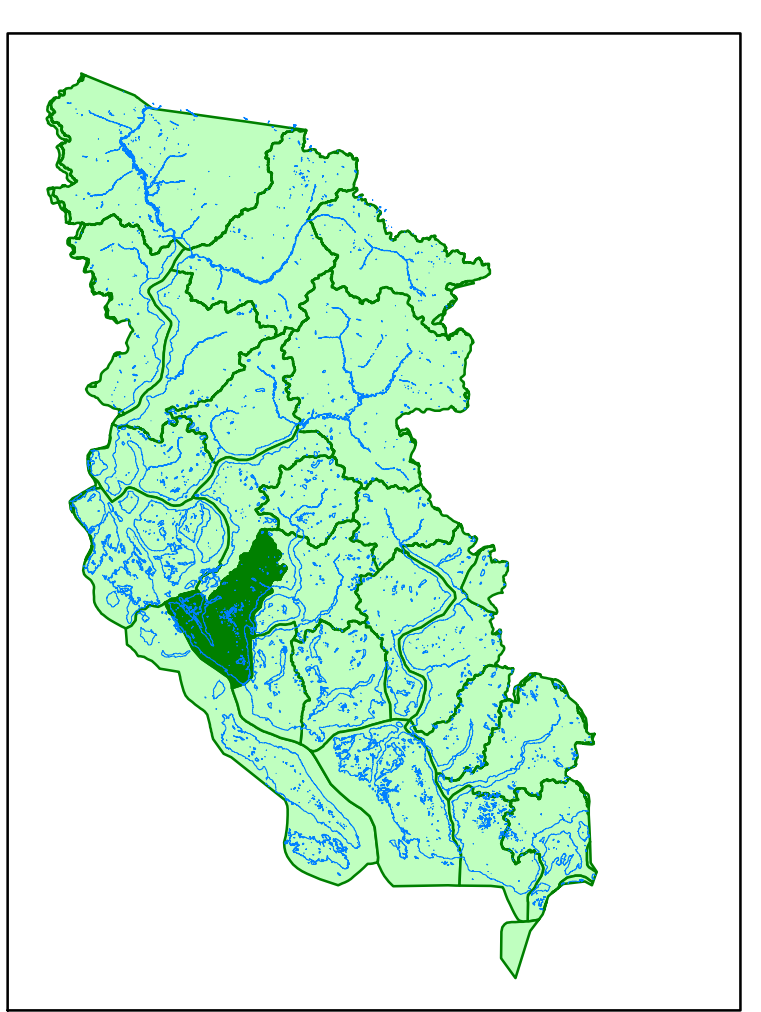
**LEGEND**

**Base Information**

-  Landscape Unit Boundary
-  Roads
-  Water
-  Open Water
-  BEC
  
-  **OGMA** (Old Growth Management Area)



Sunshine Coast Forest District



Scale 1 : 50,000

Projection / Datum: Albers / NAD83  
 Forest cover: MoF FC1 1:20000  
 Digital mapping base: TRIM 1:20000  
 Contour interval: 100 metres  
 Submitted by: Brian Smart / MoF  
 Weyerhaeuser Stillwater Div.  
 Date: September 2000  
 Amendment:  
 Approved Date: September 22, 2000  
 Mapped by: SJW March 21, 2002

