



File: FOR-12500-25/UpperLillooet

AMENDMENT ORDER
OLD-GROWTH MANAGEMENT AREAS
in the
UPPER LILLOOET LANDSCAPE UNIT

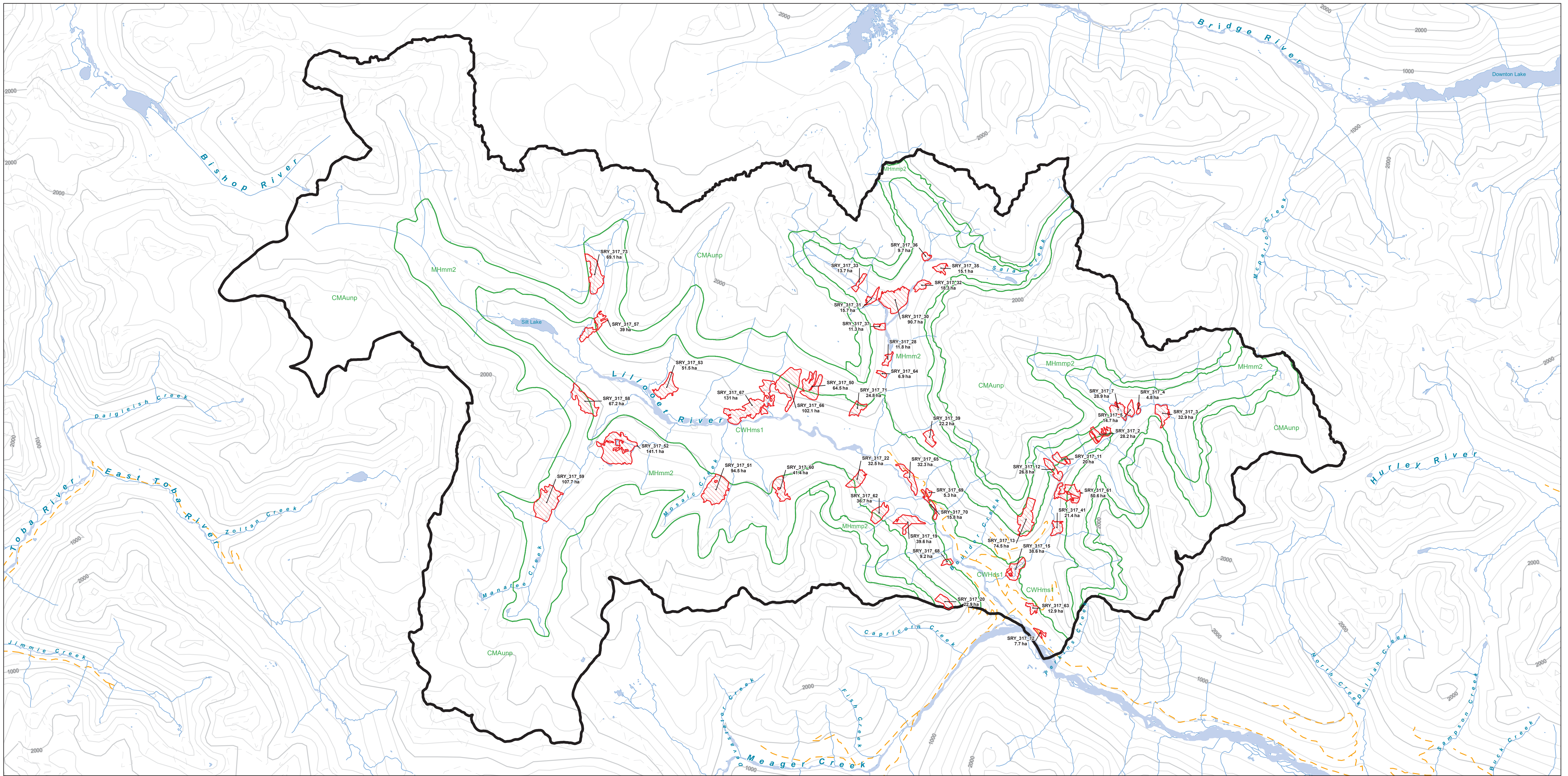
Pursuant to Section 93.4 of the *Land Act*, through the *Land Use Objectives Regulation*, for the purposes of the *Forest and Range Practices Act (FRPA)*, I hereby amend the objectives in the Upper Lillooet Landscape Unit, an area located north-west of Pemberton, BC in the Sea to Sky Natural Resource District, effective November 26, 2018.

The boundaries of the old-growth management areas in the Upper Lillooet Landscape Unit are shown on the Upper Lillooet Landscape Unit map, dated November 26, 2018, attached to this Order, and contained in the old-growth management area spatial layer stored in the BC Geographic Warehouse (WHSE_LAND_USE_PLANNING.RMP_OGMA_LEGAL_CURRENT_SVW).




Dave Southam
2018.12.10
09:54:10 -08'00'

**District Manager, Sea to Sky Natural Resource
District, South Coast Region, FLNRORD**

Date



Legend

-  Old Growth Management Area
-  Landscape Unit Boundary
-  BGC Variant



Scale: 1:80,000
0 2 4 km

Schedule A
Upper Lillooet Landscape Unit
Old Growth Management Areas

D. Southam

Dave Southam
2018.12.10
11:03:53 -08'00'

Dave Southam, District Manager
Sea to Sky Natural Resource District
Ministry of Forests, Lands, Natural Resource Operations
and Rural Development

For more information contact:
Sea to Sky District
Ministry of Forests, Lands and
Natural Resource Operations
604-898-2100

Contour Interval 200 m
Projection UTM Zone 10
Datum NAD 83