



File: ORCS 17580-30/Upper Lillooet

**ORDER TO ESTABLISH
A LANDSCAPE UNIT AND OBJECTIVES**

UPPER LILLOOET LANDSCAPE UNIT

Pursuant to Section 4 of the *Forest Practices Code of British Columbia Act*, I hereby establish the Upper Lillooet Landscape Unit, an area located north-west of Pemberton, BC in the Squamish Forest District, effective September 6, 2004.

The boundaries of the Upper Lillooet Landscape Unit are shown on the Upper Lillooet Landscape Unit map, dated July 30, 2004, attached to this Order.

In addition, I hereby establish objectives for the Upper Lillooet Landscape Unit, as attached to this Order, effective September 6, 2004.

(Original signed by)

August 13, 2004

**Regional Director, Coast Region,
Ministry of Sustainable Resource Management**

Date

Preamble

The goal of these objectives is to sustain biological diversity at the landscape level; permissible activities are described to streamline administrative procedures and address operational safety concerns.

First Nations traditional use of forest resources, treaty negotiations or settlements will not be limited by the following objectives.

Legal Objectives – Upper Lillooet Landscape Unit

Pursuant to Section 4 of the *Forest Practices Code of British Columbia Act*, the following are landscape unit objectives for the Upper Lillooet Landscape Unit.

Objective 1

1. Maintain or recruit old growth forests in established old growth management areas (OGMAs), as shown on the attached Upper Lillooet Landscape Unit map dated July 30, 2004 subject to timber harvesting and road construction in accordance with section 2, 3 and 4 below.
 2. (1) Where sufficient suitable replacement forest is available in the variants listed below, timber harvesting or road construction may be undertaken in OGMAs that are >10 ha in size for operational reasons up to a cumulative maximum of:
 - i) 15 ha in variant CWHms1, and
 - ii) 15 ha in variant MHmm2,provided that replacement OGMA of equivalent or better quality and quantity is identified in order of priority, 1) immediately adjacent to the existing OGMA, or 2) in the same variant and landscape unit as the existing OGMA.
 - (2) The criteria in 2 (1) is to apply to individual OGMAs within the categories below and must ensure that OGMA ecological attributes and spatial distribution are maintained or improved:
 - i) OGMAs >10 ha to <50 ha in size where the proposed activity affects the OGMA by <5 ha,
 - ii) OGMAs ≥50 ha to <100 ha in size where the proposed activity affects the OGMA by <10ha,
 - iii) OGMAs ≥100 ha in size where the proposed activity affects the OGMA by <10%.
 - iv) Construction of ≤500m of road or a bridge within an OGMA where there is no other practicable option. As an alternative to finding replacement area, the licensee may permanently deactivate and rehabilitate a temporary road or bridge site within four years after construction.
 - (3) Where OGMA boundary adjustments and replacement areas are required under section 2 (1) and (2) they must be documented, mapped and submitted to the satisfaction of the Delegated Decision Maker (DDM) at the end of each calendar year for his/her approval.
 - (4) The provisions in section 2 (1) and (2) do not apply to the following OGMAs #13, 28, 63, 65.
3. Permissible Activities:
 - (1) Timber harvest may occur to prevent the spread of insect infestations or diseases that pose a significant threat to forested areas outside of OGMAs. Salvage within OGMAs will be done in a manner that retains as many old growth forest attributes as possible.

- (2) Construction of rock quarries and gravel pits under authority of forest tenure where the development will be located immediately adjacent to existing roads under tenure and will affect the OGMA by <0.5 ha.
 - (3) Intrusions, other than those specified, that affect an OGMA by less than 0.5 hectare in total.
 - (4) Where OGMA replacement forest is required as a result of activities under 3 (1) or (2), it must be of equivalent or better quality and quantity and be identified in order of priority, 1) immediately adjacent to the existing OGMA, or 2) in the same variant and landscape unit as the existing OGMA; such that OGMA ecological attributes and spatial distribution are maintained or improved. OGMA replacement areas must be documented, mapped and submitted to the satisfaction of the DDM at the end of each calendar year for his/her approval.
4. Permissible Activities for Safety Purposes:
- (1) Maintenance, deactivation, removal of danger trees, or brushing and clearing on existing roads under active tenure within the right-of-way for safety purposes.
 - (2) Felling of guylines, clearance, tailhold anchor trees, or danger trees (except high value wildlife trees) along cutblock boundaries or within the right of way on new road/bridge alignments to meet safety requirements.

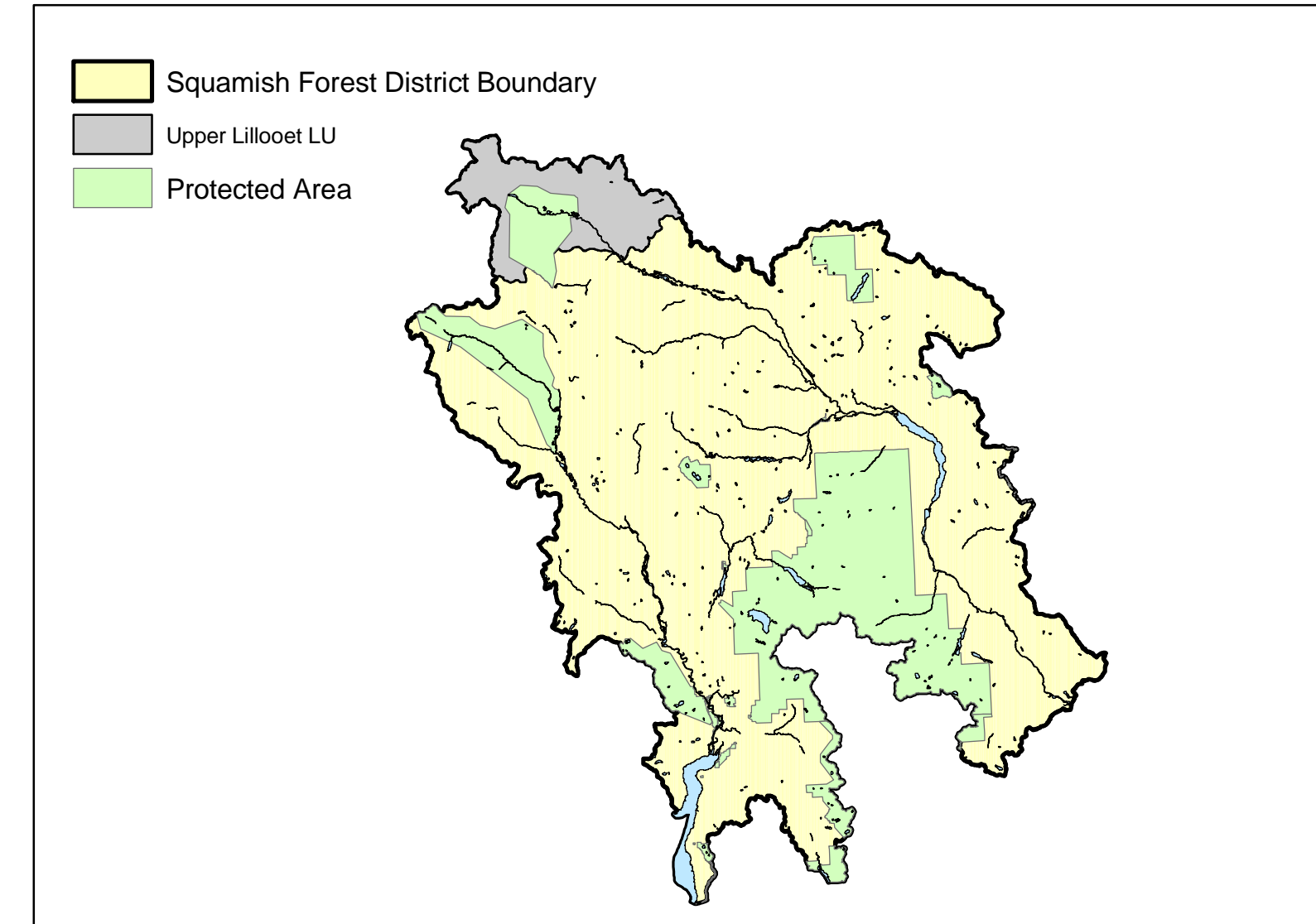
Objective 2

Maintain stand level structural diversity by retaining wildlife tree patches (WTP). Cutblocks for which harvesting has been completed by each licensee by tenure will retain adequate amounts of wildlife tree patches to ensure that over each 3 year period, commencing on the date the objectives are established, the target percentage as noted in Table A is achieved. In addition:

- (1) WTPs must be well distributed across the BEC subzone and located within or immediately adjacent to a cutblock.
- (2) Each cutblock >10 ha in size must have a minimum of 2% wildlife tree retention, except in the MHmm subzone.
- (3) No timber harvesting, including single tree selection, is to occur within WTPs for at least one rotation, except as noted in (4) below.
- (4) Salvage of windthrown timber and harvesting of remaining standing stems is only permitted within WTPs where catastrophic windthrow exceeds 50% of the dominant or co-dominant stems; or where forest health issues pose a significant threat to areas outside the WTP. Where salvage/harvesting is planned and authorized, replacement WTP of equivalent or better quality and quantity must be identified immediately to achieve the retention target.
- (5) WTPs must include, if present, remnant old growth patches and live or dead veteran trees (excluding danger trees).
- (6) WTPs must include representative larger trees for the stand and any moderate to high value wildlife trees (excluding danger trees).
- (7) Where differences exist between mapped and actual BEC subzones, subzones will be confirmed by site plan information.

Table A. Wildlife Tree Retention by BEC subzone in the Upper Lillooet Landscape Unit.

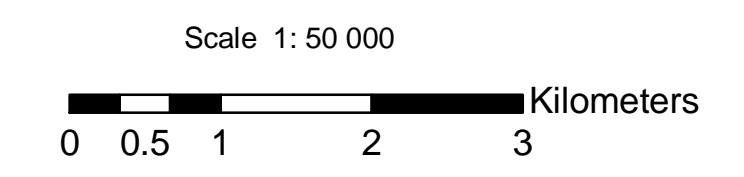
BEC Subzone	% Wildlife Tree Retention
CWH ds (Coastal Western Hemlock, dry subaritime)	12
CWH ms (Coastal Western Hemlock, moist subaritime)	6
MH mm (Mountain Hemlock, moist maritime)	0



- Landscape Unit Boundary
- Biogeoclimatic Ecosystem Boundary
- Protected Area
- Roads
- Water
- 20m Contours
- Lake
- River
- Swamp

OLD SERAL REPRESENTATION AREAS

- PROTECTED AREA OLD GROWTH (REPRESENTATION CONTRIBUTION)
- OLD GROWTH MANAGEMENT AREAS



Map 1 of 1
Projection/Datum: Albers / Nad 83
Forest Cover: MOF FC 1: 20 000
Digital Mapping Base: TRIM 1: 20 000
Contour Interval: 20 meters

Submitted by: LS, GG MSRM
Date: July 30, 2004
Amendment: _____
Date: _____

Mapped by Atticus, WS - Squamish Mills

