

## Appendix 1

### Ministry of Natural Resource Operations

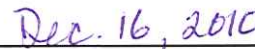
#### Ministerial Order

##### Amendment Order for the Soo Landscape Unit and Objectives

1. Pursuant to section 93.4 of the *Land Act* and by this order, the **Order to Establish the Soo Landscape Unit and Objectives in the Squamish Forest District**, signed August 13<sup>th</sup> 2004 by the Regional Executive Director Warren Mitchell, is amended as follows.
  - i) The boundary of the Soo Landscape Unit shown on the Soo Landscape Unit Map dated July 30, 2004, is repealed and replaced by the Soo Landscape Unit Map, dated February 5, 2010, attached to this Order.
  - ii) Old Growth Management Area 61 is repealed.
  - iii) Old Growth Management Areas 18 and 24 are repealed and replaced by the amended Old Growth Management Areas 18 and 24 shapes shown on the attached Soo Landscape Unit Map dated February 5, 2010.
  - iv) Objective 1(1) is repealed and replaced by "*Maintain or recruit old growth forests in established old growth management areas (OGMAs), as shown on the attached Soo Landscape Unit map dated February 5, 2010 subject to timber harvesting and road construction in accordance with section 2, 3 and 4 below.*"
2. This Order takes effect on the day that notice of this Order is published in the Gazette.
3. Pursuant to section 8(2)(b) of the *Forest and Range Practices Act*, an approved forest stewardship plan must be amended to be consistent with this order within 12 months from the effective date of this Order.



Heather MacKnight  
Regional Executive Director, Coast Region  
Ministry of Natural Resource Operations




Date



# Soo Landscape Unit

February 05 2010

(this map replaces the approved map dated July 30, 2004)

-  Landscape Unit Boundary
-  Biogeoclimatic Zone
-  Road
-  Water Course
-  Contour Line (200m Interval)
-  Parks and Protected Areas
-  Protected Area Old Growth
-  Old Growth Management Areas
-  Waterbody

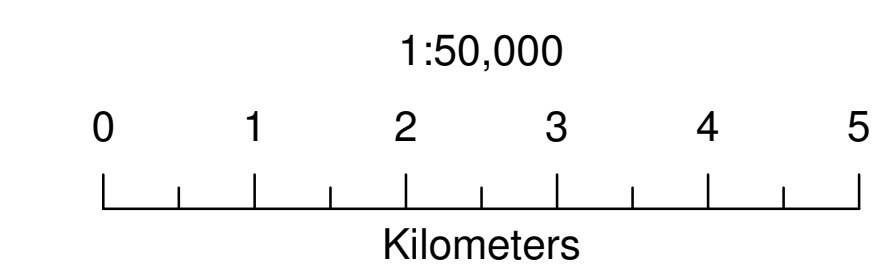
Regional Operations Division

Produced by:



Integrated Land Management Bureau

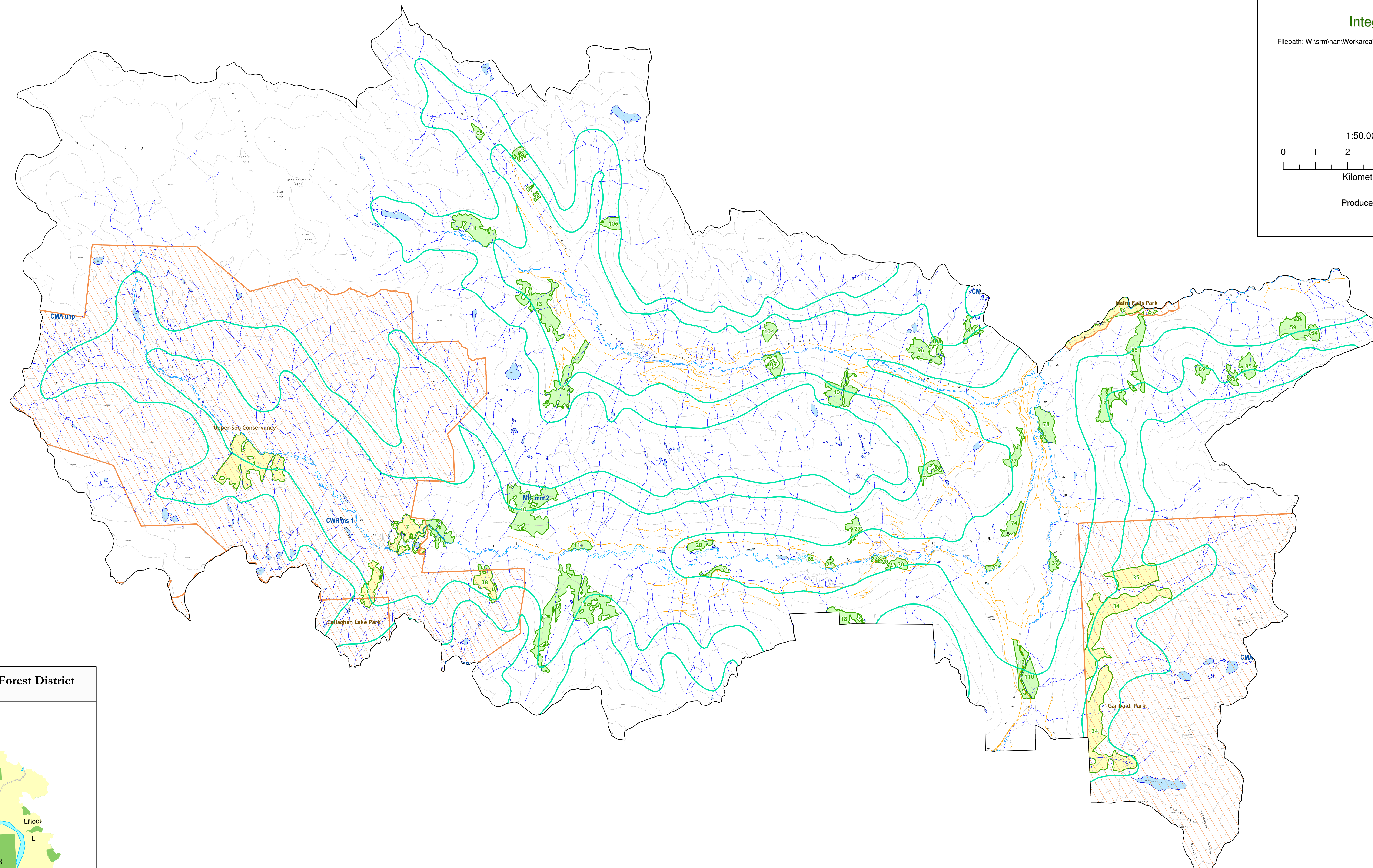
Filepath: W:\sr\m\an\Workarea\psc\_proj\p10\_0202\_Establish\_OGMAs\soo\_legal\_33x34\_05February21010.mxd  
Projection/Datum: Albers / NAD83  
Date Created: 2010-February-05  
Created for: LIM by JS



Submitted by: PV, ILMB

Date: February 05, 2010

Produced for:



Map Study Area within the Squamish Forest District

