



File: FOR-12500-25/Railroad

AMENDMENT ORDER
OLD-GROWTH MANAGEMENT AREAS
in the
RAILROAD LANDSCAPE UNIT

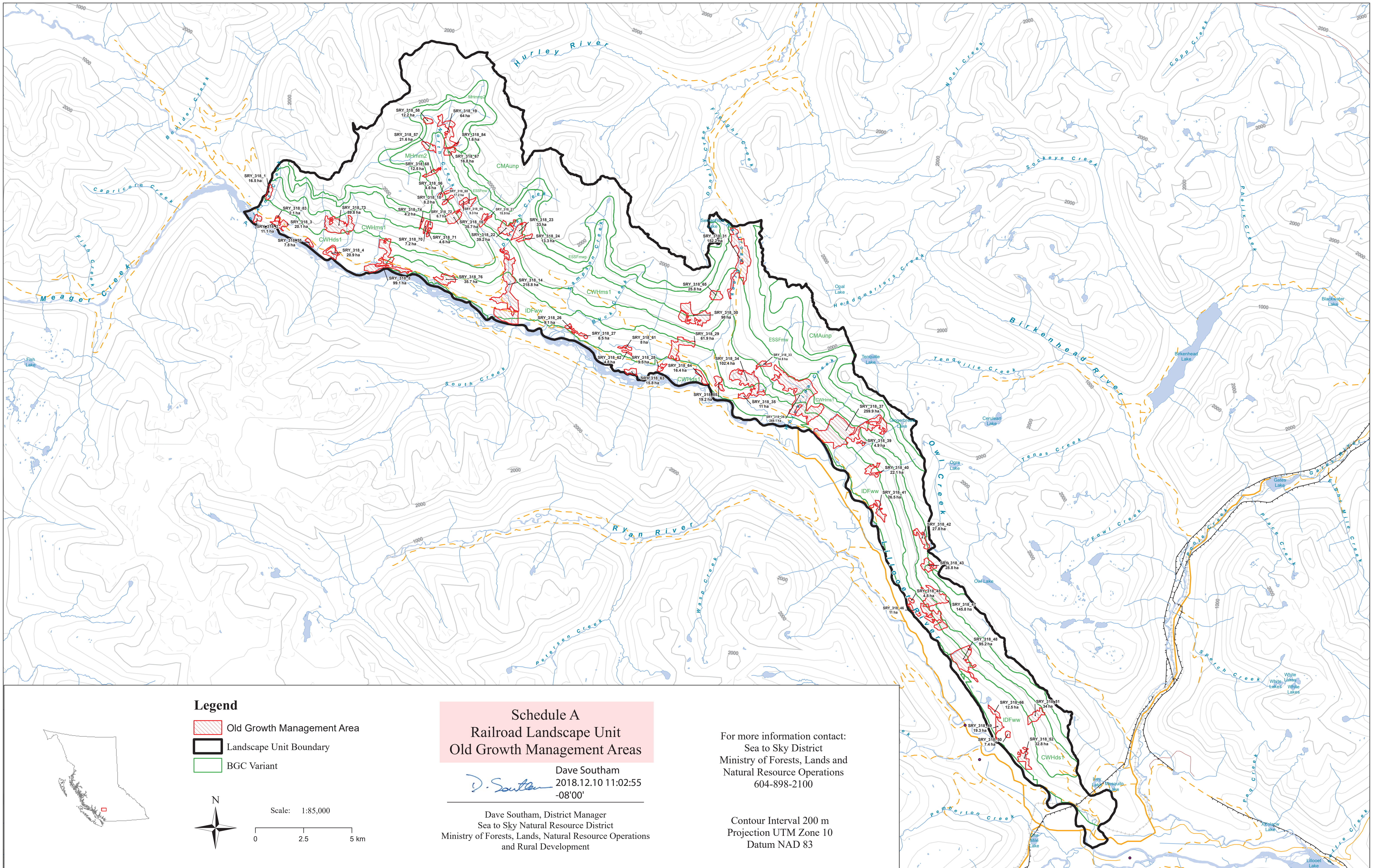
Pursuant to Section 93.4 of the *Land Act*, through the *Land Use Objectives Regulation*, for the purposes of the *Forest and Range Practices Act (FRPA)*, I hereby amend the objectives in the Railroad Landscape Unit, an area located north-west of Pemberton, BC in the Sea to Sky Natural Resource District, effective November 26, 2018.

The boundaries of the old-growth management areas in the Railroad Landscape Unit are shown on the Railroad Landscape Unit map, dated November 26, 2018, attached to this Order, and contained in the old-growth management area spatial layer stored in the BC Geographic Warehouse (WHSE_LAND_USE_PLANNING.RMP_OGMA_LEGAL_CURRENT_SVW).




Dave Southam
2018.12.10 09:53:21
-08'00'

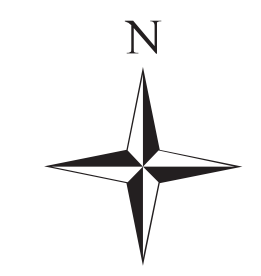
**District Manager, Sea to Sky Natural Resource
District, South Coast Region, FLNRORD**

Date



Legend

-  Old Growth Management Area
-  Landscape Unit Boundary
-  BGC Variant



Scale: 1:85,000
 0 2.5 5 km

**Schedule A
 Railroad Landscape Unit
 Old Growth Management Areas**

D. Southam
 Dave Southam
 2018.12.10 11:02:55
 -08'00'

Dave Southam, District Manager
 Sea to Sky Natural Resource District
 Ministry of Forests, Lands, Natural Resource Operations
 and Rural Development

For more information contact:
 Sea to Sky District
 Ministry of Forests, Lands and
 Natural Resource Operations
 604-898-2100

Contour Interval 200 m
 Projection UTM Zone 10
 Datum NAD 83