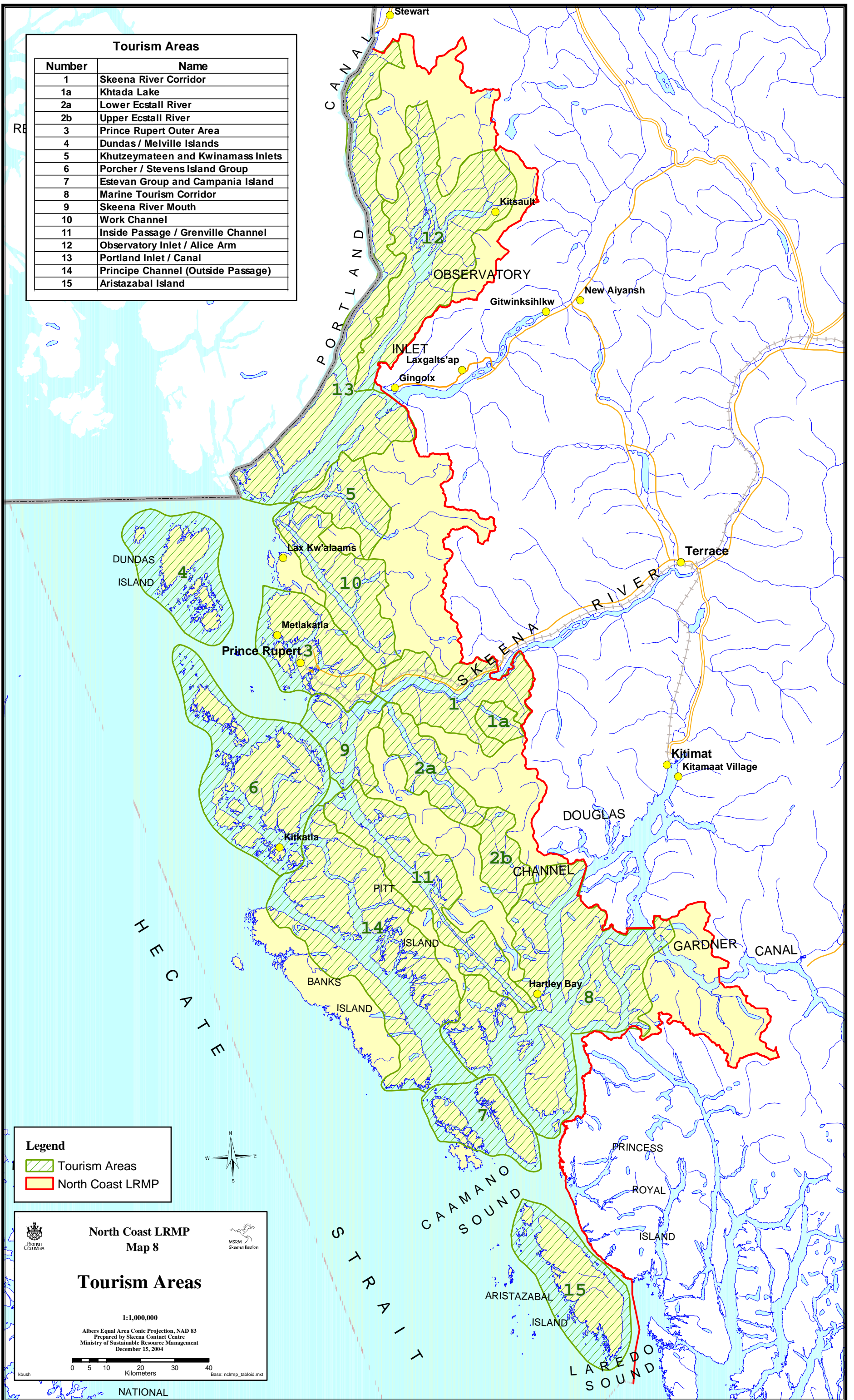
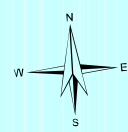


| Tourism Areas |                                    |
|---------------|------------------------------------|
| Number        | Name                               |
| 1             | Skeena River Corridor              |
| 1a            | Khtada Lake                        |
| 2a            | Lower Ecstall River                |
| 2b            | Upper Ecstall River                |
| 3             | Prince Rupert Outer Area           |
| 4             | Dundas / Melville Islands          |
| 5             | Khutzeymateen and Kwinamass Inlets |
| 6             | Porcher / Stevens Island Group     |
| 7             | Estevan Group and Campania Island  |
| 8             | Marine Tourism Corridor            |
| 9             | Skeena River Mouth                 |
| 10            | Work Channel                       |
| 11            | Inside Passage / Grenville Channel |
| 12            | Observatory Inlet / Alice Arm      |
| 13            | Portland Inlet / Canal             |
| 14            | Principe Channel (Outside Passage) |
| 15            | Aristazabal Island                 |



**Legend**

- Tourism Areas
- North Coast LRM



**North Coast LRM**  
Map 8

**Tourism Areas**

1:1,000,000  
Albers Equal Area Conic Projection, NAD 83  
Prepared by Skeena Contact Centre  
Ministry of Sustainable Resource Management  
December 15, 2004

0 5 10 20 30 40  
Kilometers

Base: nclmp\_tabloid.mxd