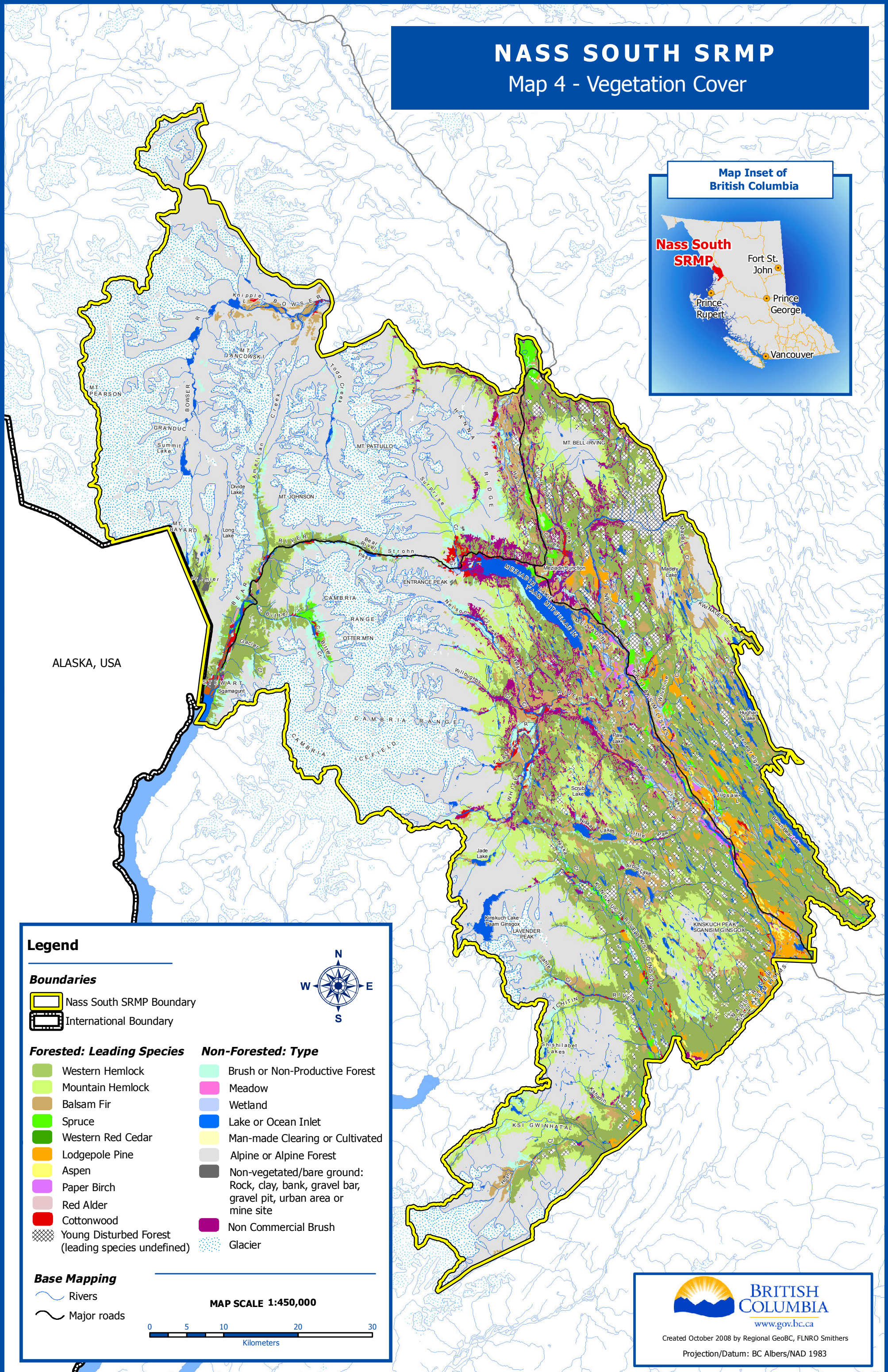


NASS SOUTH SRMP

Map 4 - Vegetation Cover

Map Inset of British Columbia



ALASKA, USA

Legend

Boundaries

- Nass South SRMP Boundary
- International Boundary

Forested: Leading Species

- Western Hemlock
- Mountain Hemlock
- Balsam Fir
- Spruce
- Western Red Cedar
- Lodgepole Pine
- Aspen
- Paper Birch
- Red Alder
- Cottonwood
- Young Disturbed Forest (leading species undefined)

Non-Forested: Type

- Brush or Non-Productive Forest
- Meadow
- Wetland
- Lake or Ocean Inlet
- Man-made Clearing or Cultivated
- Alpine or Alpine Forest
- Non-vegetated/bare ground: Rock, clay, bank, gravel bar, gravel pit, urban area or mine site
- Non Commercial Brush
- Glacier

Base Mapping

- Rivers
- Major roads

MAP SCALE 1:450,000

0 5 10 20 30 Kilometers

BRITISH COLUMBIA
www.gov.bc.ca

Created October 2008 by Regional GeoBC, FLNRO Smithers
Projection/Datum: BC Albers/NAD 1983