



Vanderhoof Land and Resource Management Plan

DRAFT IMPLEMENTATION PROGRESS REPORT

November 2003

Resource values examined in this update:

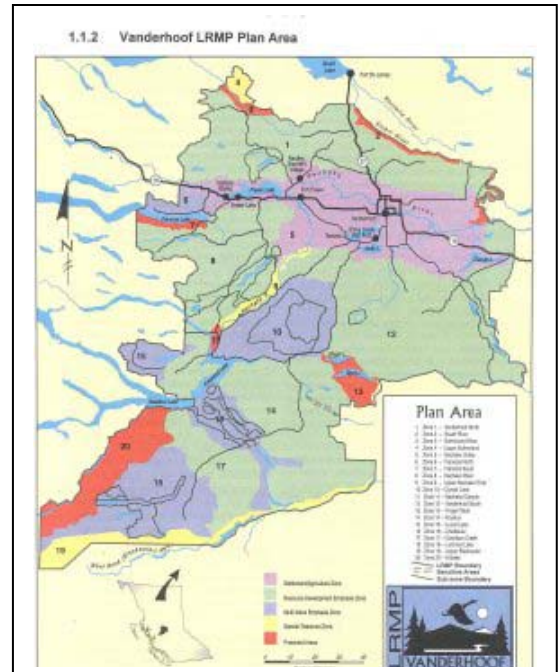
- Protected Area
- Jobs & Community Stability
- Biodiversity
- Water
- Fisheries & Lakeshore Management
- Heritage & Culture
- Recreation & Tourism
- Wildlife
- Agriculture
- Minerals & Energy
- Timber Harvesting, Silviculture & Forest Health
- Trapping & Guiding
- Access Management Strategies

Synopsis

This document has been developed to provide a comprehensive overview of the “best information available” with respect to the Vanderhoof Land and Resource Management Plan (LRMP). It provides brief descriptions of a variety of projects that have been initiated and/or completed by government, industry and local organizations in the Vanderhoof LRMP area. Project updates are organized according to resource value categories, as listed in the side bar of this page. This update is not intended to be an all-inclusive implementation report and requires your feedback and comments in to compliment, expand and build upon the current knowledge base.

What is the Vanderhoof LRMP?

The Vanderhoof LRMP is a full consensus strategic plan for all aspects of land and resource management within a 13,800 square kilometre area, built through participation by the public, local industry and government resource agencies. This Plan results in stability for all resource-based industries such as tourism and timber, six Protected Areas and an improved outlook for tourism and wildlife – particularly for grizzly bear and woodland caribou.



Protected Areas

Entiako Park and Protected Area Ecosystem Management Plan

- As a precursor to the ecosystem management plan that is to be developed for the Entiako Park and Protected Area, BC Parks has developed an Ecosystem Management Study (March 2001) and an Ecological Background Information Summary (March 2001).

The Response of Caribou Terrestrial Forage Lichens to Forest Harvesting and Mountain Pine Beetles in the East Ootsa and Entiako Areas

- This report was prepared for Fraser Lake Sawmills, Forest Renewal BC, and BC Parks in March 2002 as an annual report.
- It also contributes to the Entiako Park and Protected Area Ecosystem Management Plan.

Finger-Tatuk Ecosystem Management Plan

- This report was prepared by BC Parks in 2000 to help manage Finger-Tatuk Park “as a Protected Area, preserving important biodiversity and recreation values,” as stated in the Vanderhoof LRMP.
- It developed inventories on a broad basis and identifies areas for further study and provides recommendations for further management and planning.
- It also addresses issues of fire management.

Finger-Tatuk Provincial Park Monitoring Plan Framework & Protocols

- This BC Parks report, delivered in April 2003, provides a framework to monitor components of biodiversity in Finger Tatuk Provincial Park as well as priority resource values focusing on lake fisheries.
- It has been developed in response to concerns related to increased logging activities and road access in close proximity to the protected area, particularly along the southern park boundary.
- The overall intent of the plan is to determine the effectiveness of management strategies designed to achieve ecosystem management goals and objectives both within the park as well as areas outside the park that exert an influence on ecological integrity.

Protected Area Boundaries Data (GPS and Legal Surveys)

- The objectives of this project include posting boundary markers, monitoring adjacent private or industrial activities, identifying non-conforming use activities and enforcement, and access management.
- In the Vanderhoof LRMP areas BC parks has focused on five ecological reserves, Finger-Tatuk Park, and the southwest portion of Stuart River Park.

Jobs & Community Stability

BC Timber Sales (BCTS)

- Officially replaced the Ministry of Forests Small Business Forest Enterprise Program on April 1st 2003.
- BCTS has a commercial focus.
- The majority of timber sales will now go to the highest bidder.
- Currently, BCTS provides access to 13% of the provincial Annual Allowable Cut (AAC). To support the new market-based pricing system, BCTS will increase the amount of

timber it auctions to 20% of the provincial AAC. Through the *Forestry Revitalization Act (Bill 28)* BCTS receives a portion of volume from major licensees to bring the cut up to approximately 20% of the AAC, provincially.

Woodlots, Small Scale Salvage and Value-added Companies

- The volume reallocation resulting from the *Forestry Revitalization Act* is predicted to expand the Woodlot and Small Scale Salvage Programs and First Nations access to wood.
- Timber processing requirements imposed on major licensees will be removed, providing value-added companies with much greater access to wood fibre.
- Together, these changes will result in a much greater percentage of the province's timber being sold through open market.
- Government will continue to support development and marketing of new value-added programs through Forest Investment Account (FIA) activities. For next year, \$7 million has been allocated to the FIA product development and secondary manufacturing program.

BC Heartlands Economic Strategy

- First announced in February 2003, the Heartlands Economic Strategy shows - sector by sector and region by region - how the province is working with communities, businesses and First Nations to unleash the full economic potential of every region of B.C.
- The Heartlands Economic Strategy aims to support economic growth and job creation by: revitalizing our resource industries, encouraging growth in new and emerging sectors, building new partnerships with First Nations, and restoring B.C.'s transportation infrastructure.

Assessing the Economic Impacts of Mountain Pine Beetle (MPB) Infestations in the Northern Interior of BC

- Mike Patriquin and William White from the Canadian Forest Service are currently developing this project.

Ministry of Sustainable Resource Management (MSRM) Tourism Resource Planning

- See Recreation and Tourism section.

Biodiversity

Landscape Level Objectives for Old Growth and Patch Size

- Landscape level objectives for biodiversity are being developed using Natural Disturbance Units (NDU's) research conducted by the Ministry of Forests (Craig DeLong, 2001).
- Through a partnership of Prince George Timber Supply Area timber licensees and MSRM, legal objectives for old growth and patch size distribution are being prepared and are to be established by the Regional Director of MSRM in 2004.
- Biodiversity objectives will be addressed in all future operational planning for forestry, as per the *Forest Practices Code Act* and/or the *Forest and Range Practices Act*.

Inventories of Wildlife Trees and Coarse Woody Debris Resources and Associated Birds and Small Mammals in the Major Timber Types in the Vanderhoof Forest District

- This report was developed February 1999 by Madrone Consultants for L&M Lumber.
- It provides valuable inventories that will support the management of biodiversity at the stand level in the Vanderhoof Forest District.



Defining Old Growth Project

- Developed in collaboration between MSRM and the Vanderhoof Forest District Innovative Forest Practices Agreement (IFPA).
- Phase 1 (completed): To establish a baseline control that best represents, defines and quantifies old growth attributes. This phase was completed in March 2003.
- Phase 2 (June 2004/2005): To sample mixed species stands (where lodgepole pine is a minor component) that have various levels of Mountain Pine Beetle disturbance and compare against the old growth baseline.
- Phase 3 (June 2004/2005): To sample mixed species stands that have less than 50% disturbance by small scale salvage operations and compare against the old growth baseline.

Vanderhoof Standard Operating Procedure (SOP) for Wildlife Tree Retention and Stand Level Biodiversity

- The SOP, delivered in 2002, facilitates the conservation of stand level biodiversity as per the Forest practices Code.
- It provides guidance for ecologically sound wildlife tree retention in operation planning.

Water

Chilako Watershed Council

- Received funding from the Investment Agriculture Foundation of BC in 2001.
- 10 projects, instigated by small landowners, were completed by March 2003.
- The projects focused on management changes, such as bank stabilization and fencing for cattle, rather than restoration.
- In 2001, a hydrology study was done for portions of the Chilako Watershed by Marten Geertsema and Dan Hogen of Ministry of Forests (MOF).

Fraser – Nechako Riparian Program

- This program started in 2002 and funding is expected to last until March 2004.
- The geographic extent of this program is from Valemount to Fort Fraser along Highway 16 and south of Prince George to Hixon.
- Initiates management changes similar to the work done by the Chilako Watershed Council.
- The program is made up of 5 producer (farmer) organizations, along with DFO, Ducks Unlimited, Ministry of Agriculture, Food and Fish, and Canfor.
- BC Conservation Foundation administers funds.

Swanson Creek Restoration

- An FRBC report on Swanson Creek restoration activities was made available in 1999.
- Riparian planting at Swanson Creek took place in 2000.

Ormon Creek Enhancement Project

- The Carrier Sekanni Tribal Council completed an enhancement project in this area.
- Further information on this project is not available at this time.

Drinking Water Project

- The Ministry of Water, Land and Air Protection (WLAP) implemented a raw water quality and stream sediment monitoring program at selected communities in the Omineca-Peace region in 2002.

- Through this process, a total of 18 community water supply intakes in the Omineca-Peace region were selected for monitoring during 2002/03.
- In the Vanderhoof LRMP area, the Village of Fraser Lake and the Village of Fort Fraser were selected, with sample collection commencing in September, 2002, and ending in August, 2003.
- Reports summarizing the results of this program and recommendations based on those results should be complete early in 2004.

Watershed Characterization

- WLAP implemented a watershed characterization project in September 2002 that selected and sample 13 watersheds throughout the Omineca-Peace Region based on a land-use risk assessment matrix.
- This data will be used to evaluate possible land-use impacts occurring within the watershed, that will further be used to do source assessments on watersheds showing the greatest risk.
- In the Vanderhoof LRMP area, Corkscrew Creek and Murray Creek Watersheds were sampled.
- Reports summarizing the results of this program may be available later in 2004.

Management and Stock Updates for the Stellako River

- Annual enumeration of rainbow trout is done through snorkel counts.
- Telemetry and general life history information has been collected on the Stellako.
- Nature Trust has also done land acquisitions along the Upper Stellako.
- WLAP is preparing an update in the spring of 2004.

Nithi Creek Enhancement

- A flow weir was constructed to ensure adequate spawning conditions in the creek.

Siakuz First Nation Instream Work

- Work was completed by the Siakuz First Nations in the Stony, Corkscrew, and Swanson Creek. Further information on these projects is not available at this time.

BC Volunteer Lake and Monitoring Program

- BC Environment's Volunteer Lake Monitoring Program, in collaboration with the non-profit BC Lake Stewardship Society, is designed to better understand a lake's current water quality, identify the preferred uses for a given lake, and monitor water quality changes resulting from land development within the lakes' watershed.
- Fraser Lake has a volunteer monitoring program and a report was released called *Fraser Lake 2000-2002: The Importance of Fraser lake & its Watershed*.

Watershed Assessment and Resource Inventories for Luca Lake RMZ

- There has been a Modified Overview Assessment completed for Lucas Lake RMZ.
- Further information on this project is not available at this time.

Watershed Restoration Projects (FRBC)

- Watershed restoration projects were completed for Cluculz Creek Watershed (1997), Fraser lake Watershed (1998), Nahounli Creek (1997), and Nulki-Tachick Stream (1997) of the Vanderhoof LRMP area. Further information on these projects is not available at this time.

Interior Watershed Assessment Procedures (IWAP)

- This was a preliminary project that did baseline assessment (as per Forest Practices Code IWAP guidelines) of individual watersheds within the Vanderhoof LRMP area.



- This project was completed by the Vanderhoof Forest District.

Fish & Lakeshore Management

Fish and Fish Habitat Inventory (FFHI) Reports

- Since 2000, inventories have taken place in the following watersheds: Smith Creek, Fawnie Creek, Targe Creek, Stuart River, and the area between Knewstubb Lake and Lucas Creek. These inventories have been done by various forest companies including West Fraser Mills, L+M Lumber, and DWB Forestry.
- This website has been developed to make FFHI report queries available on the internet: <http://srmwww.gov.bc.ca/nor/rii/fish/index.html>

Provincial Fisheries Data Warehouse

- This warehouse (<http://srmapps.gov.bc.ca/apps/fidq/>) allows users to make comprehensive data queries over the internet. Information on specific watersheds, lake depth maps, individual fish data, stocking records etc. is available. All Vanderhoof Forest District fish inventory databases have now been loaded into the data warehouse.
- The warehouse was originally developed by BC Environment, but is now maintained by MSRM.

Omineca Fish Species at Risk Data Consolidation and Sensitivity Mapping

- The intent of this project is to consolidate and analyse spatially explicit data for species at risk within the Omineca Region, resulting in a sensitivity classification for a particular species.
- Depending on data distribution and quality, watersheds are assigned a Low/Medium/High or Data Insufficient rating according to a regionally developed decision matrix.

Nechako White Sturgeon Recovery Program

- A recovery program specific to the recovery of the Nechako River White Sturgeon is in progress.
- This program is being led by the Ministry of Water, Land and Air Protection (WLAP).

Species-at-Risk Map

- The locations of various species-at-risk projects have been mapped for the Vanderhoof LRMP area by MSRM. These projects have been completed by various agencies.
- Bull trout, Dolly Varden, and brassy minnow have been documented in the Vanderhoof LRMP area.
- Although Nechako/Stuart sturgeon have been studied extensively in recent years, this work has not been included on this map.

Lake Reconnaissance Inventories

- Cleswunket Lake – only redbreasted sunfish were found in this lake. Project initiated by Canfor.
- Unnamed Lake (01055CHIL) – rainbow trout and redbreasted sunfish found. Canfor project.
- Unnamed Lake (00412STUR) – no fish were found. Offers no spawning habitat for trout. Project initiated by L+M Lumber.
- Joseph Lake – no fish located and no spawning habitat available in tributaries. Project initiated by West Fraser Mills.
- Klez Lake – redbreasted sunfish were located. Project initiated by West Fraser Mills.
- Unnamed Lake (01077NECR) – redbreasted sunfish, northern pikeminnow, and rainbow trout were located. Project initiated by West Fraser Mills.



Salmon Watershed Planning Profiles

- Developed for the Fraser Basin within the Vanderhoof Land and Resource Management Plan by the Department of Fisheries and Oceans. Further information is not available at this time.

Vanderhoof Lakeshore Classification Plan

- Completed in 2000, this LRMP implementation project has classified most of the lakes in the Vanderhoof LRMP area and gives guidance to stand retention requirements on lakeshores.
- This plan is to be considered in all operational planning around lakeshores and will assist in meeting some LRMP strategies that call for maintaining recreational, angling and tourism values.

Heritage & Culture

Archaeological Inventories/Assessments

- No funding is available for specific inventory projects, however, archaeological assessments are being done in areas where harvesting operations are proposed. For example, an Archaeological Inventory was conducted in the Ormond-Oona Lakes area when mountain pine beetle management was proposed.
- An Archaeological Potential Model has been developed by MOF, which is used in identifying archaeological and cultural/heritage resources.

Culturally Modified Tree Management Strategy

- This management strategy, developed by MOF, also assists in the identification of archaeological and cultural/heritage resources.
- Culturally Modified Tree Surveys were conducted along the Messue Trail.

Recreation & Tourism (Visual Landscape Management)

Trail Mapping

- The Omineca Trail, the Fraser Lake – Stuart Lake Pack Trail, and the Cheslatta Trail have all been mapped, marked and signed. All infrastructure has been maintained to date.

Crown Land Recreation Conflict Documentation for the Ft. St. James, Vanderhoof, Prince George, and Robson Valley LRMP Areas

- Initiated by MSRM to address conflicts between motorized and non-motorized recreation users in these areas. Completed in March 2002.
- It documents specific conflict issues between user groups, as well as, the major provincial management initiatives and to establish a baseline of knowledge and practices.

Ministry of Sustainable Resource Management Tourism Resource Planning

- MSRM developed recreation and tourism resource inventories that identify areas of high potential for recreation/tourism activities in the Omineca Region in 2002/2003.
- Reference binders of recreation and tourism planning materials have been put together in 2002/2003 for both the Omineca and Peace Regions to help guide recreation and tourism development/management.



Scenic Area Management Plan

- This plan, developed in 2002 by MOF, has identified the scenic areas in the Vanderhoof LRMP area.
- It has identified visual quality classes in scenic areas where visual management must be considered in operation planning.

Scenic Areas & Visual Landscape Inventories

- There are currently 92 'known scenic areas' in the Vanderhoof LRMP area.
- Little Bobtail Lake has been inventoried as a scenic area, however, it has not been 'made know' yet.
- All of the 61 areas that the LRMP listed for visual quality management are included in the 92 'known' scenic areas.
- The only scenic area that has received a detailed inventory is Bobtail lake. The remaining 91 scenic areas are only covered with broad inventory mapping.
- The entire visual landscape resource coverage (GIS) was updated in 2003, resulting in better defined scenic area polygons and modified ratings to better reflect the LRMP recommendations. This GIS coverage will soon be made available on the MSRM Recreation Resources Inventory website (<http://142.36.245.168/webrec/index.html>).

Visual Quality Objectives (VQOs)

- Of the 92 'known' scenic areas, 66 of them have established VQOs in place.
- The LRMP specifically listed 50 scenic areas OF which VQOs were to be established. As of now, 49 of these areas have established VQOs in place, with the exception of the Crystal Lakes Area.
- Overall, this makes the Vanderhoof LRMP area with the highest known scenic area/established VQOs ratio in the entire Northern interior Forest Region.

Wildlife

Vanderhoof Caribou Management Plan

- This plan was developed by MOF and WLAP in 2002 and has become standard operating procedure in the Vanderhoof LRMP area for the management of caribou.
- It outlines strategies (seral stage retention, patch size) to be considered in operation planning in the Laidman RMZ.
- This plan can assist in measuring indicators that have caribou values associated with them.

Northern Caribou Ungulate Winter Range Strategy

- The Vanderhoof Northern Caribou Ungulate Winter Range (UWR) proposal is in progress
- WLAP, MOF, and Forest Licensees are working together to select the best spatial UWR units, and to develop measurable, and operationally feasible management objectives.
- The Laidman Lake RMZ, east of the Entiako Protected Area boundary, is the primary focus.
- A Recovery Action Group has been formed to develop a Recovery Action Plan for Northern Caribou as they have been designated as Threatened.
- UWR management objectives continue to undergo refinement and, as a result, the impact on Timber harvesting Land Base is not yet complete.

Vanderhoof Mule Deer Ungulate Winter Range

- WLAP established UWR for Mule Deer on October 6, 2003 in the Vanderhoof LRMP area under the Forest Practices Code of British Columbia Act.

- MOF is formally making the UWR known to forest licensees and tenure holders.
- The goal within the UWR is to maintain quality winter range that will provide high suitability snow interception cover and foraging opportunities at both landscape and stand-levels.

Moose Range Inventory (Barlow Lake and Blue Mountain areas)

- This inventory was conducted by WLAP and a report is available at the MOF District Office in Vanderhoof.

Grizzly Bear Habitat Evaluation in the Finger and Tatuk Lakes Region of British Columbia

- This report was prepared for Canadian Forest Products by John Paczkowski - March 2002.
- It entails an evaluation of grizzly bear habitat in the Finger and Tatuk Lakes region of the Vanderhoof LRMP area.
- Historical and ecological information regarding grizzly bears in the area was acquired by conducting interviews with local residents and workers.
- Grizzly bear habitat quality and ecology in the Finger and Tatuk Lakes area are compared to information gathered in the Parsnip Grizzly Project (Prince George LRMP area).

Ducks Unlimited Projects

- Ducks Unlimited Canada has approximately 262 referral-reconnaissance sites in the Vanderhoof LRMP area. That is, they have investigated the potential of 262 sites as potential waterfowl producing marshes.

Bald Eagle and Osprey Inventory

- This inventory was conducted in the summer of 1997 by WLAP.
- Information on nest occupancy, productivity, and associated stand and wildlife tree attributes was collected and a report was prepared.

Adams Lake 1997-1999 Waterfowl Inventory

- This Forest Renewal BC (FRBC) funded project was an inventory of forest-dwelling waterfowl. Further information on this project is not available at this time.

L&M Lumber Coarse Woody Debris (CWD) and Cavity Nesters Inventory

- L+M Lumber hired Madrone Consulting to complete a district wide inventory of CWD and cavity nesters.
- The overall objective of this FRBC funded project was to provide a representative inventory of the wildlife tree and coarse woody debris resources, and their bird and small mammal users, within the major timber types in the Vanderhoof LRMP areas.

Canfor Isle Pierre Mule Deer Winter Habitat Inventory

- This FRBC funded project, lead by WLAP, provides an inventory of the critical mule deer winter range in the Vanderhoof LRMP area.

Agriculture

Agricultural Development Areas

- This LRMP implementation project, developed in 2000, has resulted in the updating of the Vanderhoof Crown Land Plan.

- Approximately 8500 ha of Agriculture Development Areas (ADAs) have been identified based on an Arability Study.
- The output of the project can meet the need for agriculture expansion for the local community as well as other job and community stability objectives in the LRMP area.

Community Pastures

- None of the community pastures have been expanded in the Vanderhoof LRMP area although the LRMP supports this action.
- There is considerable interest and discussion on this topic, however, the great expense involved in developing land is the main limitation.

Minerals & Energy

There are no current projects that are specific to Minerals & Energy strategies from the Vanderhoof LRMP (i.e. local level planning). For an update on exploration activity in the Nechako Plateau Region visit this website: <http://www.em.gov.bc.ca/DL/GSBPubs/Expl-BC/2002/06-Lane.pdf>

Timber Harvesting, Silviculture & Forest Health

Prince George Douglas Fir Management Strategy

- This plan was developed in 2001 by MOF to provide guiding principles and objectives that can assist in adequately managing and conserving Douglas Fir.

Prince George Timber Supply Area (PG TSA) and Vanderhoof Bark Beetle Strategic Plan

- This plan was developed in 2001 to assist in the management of the current and future bark beetle infestation in the Prince George TSA.
- Beetle Management Units were delineated in each LRMP area in the PG TSA.

Vanderhoof Mountain Pine Beetle Risk and Susceptibility Mapping

- This mapping exercise was done in 2000 by MOF to determine the hazard/susceptibility rating for the entire LRMP area.

Further Beetle Management/Research

Provincial Initiatives:

- "Challenges and Solutions" symposium hosted by Natural Resources Canada Kelowna (Oct. 30-31, 2003)
- Mountain pine beetle symposium hosted by Government of British Columbia Quesnel (fall 2003 - exact date to be determined)
- Mountain Pine Beetle Action Plan (MOF - November 2001)
- West Central BC Mountain Pine Beetle Strategic Recommendations Business Report – R&S ROGERS Consulting (September 2001).
- Animated Map Showing Outbreak History 1959-2002 (Canadian Forest Service)
- Emergency Bark Beetle Management Area Maps (MOF - 2001, 2002, 2003)
- Provincial Aerial Overview Surveys (Canadian Forest Service & MOF)
- Re-designation of Emergency Management Units (MOF - updated August 1, 2003)
- Bark beetle regulation – Forest Practices Code (MOF – 2001/2002)
- Bark beetle management guidebook (MOF – 1995)
- Forest health surveys guidebook (MOF – 1995)

- The Prince George TSA has a Bark Beetle Strategic Plan (2002-2003) in place that will be revised using the updated pest aerial survey data. For further information see: http://www.for.gov.bc.ca/hfp/bark_beetles/index.htm

Federal Initiatives:

- Natural Resources Canada is very active in beetle research and planning. The specifics of their research projects are organized on the following websites.
- Entomology – Studies and Research Projects: http://www.pfc.cfs.nrcan.gc.ca/entomology/index_e.html
- Mountain Pine Beetle Initiative – Approved Projects Spring 2003: http://mpb.cfs.nrcan.gc.ca/research/approved_e.html
- Mountain Pine Beetle Planning Tools, Decision Support Systems, and Management Strategies: http://www.pfc.cfs.nrcan.gc.ca/entomology/mpb/index_e.html

Canadian Forest Products' (Canfor) Sustainable Forest Management Plan

- The primary purposes served by this SFM Plan (2002) are to demonstrate that Canfor's Woodlands Operations in the Prince George and Quesnel Timber Supply Areas meet:
 - The SFM standard for the Sustainable Forestry Initiative (SFI) Program developed by the American Forest and Paper Association.
 - The requirements of Canfor's Forestry Principles, which were developed by Canfor in June of 1999.
- The SFM Plan is concurrent with a number of objectives and strategies found in the Vanderhoof LRMP.

Forest Pesticide/Biodiversity Standards

- These standards are presently being developed with a provincial scope by regional representatives from WLAP and MOF.
- The standards are intended to be both environmentally sensitive and operationally feasible.

Euchiniko Sidehills Proposed Sensitive Site

- A preliminary proposal is in progress to have this site established as a Sensitive Area.
- Work has been done by WLAP to develop baseline inventory work to determine a measure of success for prescribed burning in this area.
- Burning has not occurred due to poor fire indices.

Identification of Areas with Unstable Soil and Terrain

- A sediment source survey was conducted as part of overview assessments that were completed for the Vanderhoof LRMP area under the Watershed Restoration Program.
- All licensees have done a reconnaissance level of terrain assessments for their operating areas that were included in the 1999/2000 Forest Development Plan submissions.

Vanderhoof Innovative Forest Practices Agreement (IFPA)

- IFPA is responsible for initiating a number of projects that will promote sustainability of production, optimisation of employment and responsible utilisation of the available forest resource. For further information visit: <http://www.vanderhoof-ifpa.com/ifpa.html>
- The Vanderhoof IFPA Forestry Plan (2002-2005) has identified the following key projects:
 - Vanderhoof Forest District Archaeological Potential Model Refinement Project.
 - Roads, Trails and Landing Inventory Project on the Vanderhoof Forest District.
 - Determination and Implementation of a Method to Realize Incremental Volume Gain from Harvesting with Low Stumps in the Vanderhoof Forest District.

- Improving Localized Green-Up Input
- Operational Adjustment Factors
- Predictive Ecosystem Mapping and Terrestrial Ecosystem Mapping
- Strategic Harvest and Investment Planning
- Vegetation Resource Inventory

Trapping & Guiding

There are no current projects that are specific to Trapping & Guiding strategies from the Vanderhoof LRMP. However, some of the Trapping & Guiding General Management Directions are being implemented through the Timber Harvesting, Silviculture, and Forest Health projects mentioned above.

Access Management

Vanderhoof Access Management Plan

- This LRMP implementation project was completed in 2002 by the Vanderhoof MOF District Office.
- It delineated access management points in broad access management areas and identified the specific type of access allowed. It also identified areas that are sensitive to access.

Revegetate of ditches, landings, gravel pits and winter roads to minimize soil erosion, provide forage and be visually acceptable

- This was being done as per the Forest Road Regulations up until the last year. Now the regulations read that soil must be revegetated only if there is a risk of erosion. Based on this change in regulation, flat ground is less likely to be revegetated on a regular basis.

Deactivation of Logging Roads

- Deactivation of logging roads did occur under the Watershed Restoration Program until Mountain Pine Beetle management deemed it necessary to keep forest roads maintained.
- As well, due to the terrain in the Vanderhoof area it is cheaper to maintain a road than to deactivate it.
- Minor amounts of deactivation are still being done to seasonally control water, but very seldom are whole road systems being deactivated.

Kenney Dam Road (Safety)

- Ministry of Transportation and Highways (MOTH) has spent a lot of money on the improvement and maintenance of the road surface to improve the safety and quality.
- MOF installed kilometre markers along the road to increase safety but some residents are still concerned about public safety. The issue was brought up to the Vanderhoof Traffic Safety committee and a decision was made to remove the signs.

Note: To receive detailed information on any of the plans, inventories or incentives mentioned in this report, please contact the appropriate custodian/agency, go to the specified website, or refer to the attached list of supplemental websites. For specific questions regarding the Draft Vanderhoof LRMP Implementation Plan,, please contact:

Traci Leys-Schirock

#325 1011 4th Ave, Prince George, BC

Traci.LeysSchirok@gems1.gov.bc.ca

(250) 565-4471