

PREAMBLE

The Robson Valley Land & Resource Management Plan identified the Canoe Mountain area as part of the Rocky Mountain Trench Special Management Zone (SMZ). This area was identified for management as a SMZ in order to provide for the maintenance of scenic views and wildlife.

The Canoe Mountain area has also been identified by the Village of Valemount as a key strategic area for economic diversification, as the area has very high potential for tourism and resort oriented development. For the area to support high value tourism operations, it is critical that any forest harvesting activities and land alterations be done in a manner that is consistent with tourism development requirements. As the Province begins and conducts negotiations with potential resort/tourism developers, it is critical that these proponents have the opportunity to comment on forest harvesting activities in the area.

Recognizing the significant economic development potential of this area, and the need for certainty required by current and future tenure holders, the Ministry of Sustainable Resource Management has developed and enacted the attached Landscape Unit Objectives. The intent of these Landscape Unit Objectives is to provide legal certainty regarding viewscape management and consultation processes for forest harvesting in the area.

ORDER TO ESTABLISH THE SOUTH TRENCH AND WEST KINBASKET LANDSCAPE UNITS AND LANDSCAPE UNIT OBJECTIVES FOR THE CANOE MOUNTAIN ZONE.

Pursuant to Section 4 of *the Forest Practices Code of B.C. Act* (the Act), the South Trench and West Kinbasket Landscape Units in the Robson Valley Forest District, as indicated on Maps 1 and 2, are established as landscape units.

Pursuant to Section 4 of *the Forest Practices Code of B.C. Act*, the following are landscape unit objectives which will apply to the Canoe Mountain zone, as indicated on Map 3, of the South Trench and West Kinbasket Landscape Units in the Robson Valley Forest District.

1. Visual Quality

A. Protect the Visual Quality of the Canoe Mountain zone area in a manner consistent with the area's high tourism values by:

- a. Managing Zone 1, as shown on Map 3 attached, to a visual quality objective of *Partial Retention*.
- b. Managing Zone 2, as shown on Map 3 attached, to a visual quality objective of *Retention*.
- c. Prior to approval of any Forest Development Plans within the Canoe Mountain zone area of the Landscape Unit, the licensee(s) shall submit a visual impact assessment (that includes realistic computer visualization models) to the Ministry of Forests, Land & Water BC Inc. and any approved resort developer, and seek their input and comment.
- d. Prior to undertaking any other form of forest harvesting (e.g. beetle salvage) a licensee(s) shall consult with any approved resort developer and Land & Water BC Inc.

2. Forest Harvesting activities

A. Manage all forest harvesting activities within the Canoe Mountain zone area in a manner that is consistent with the area's high tourism values through the following provisions:

- a. Prior to seeking approval for any forest harvesting activities within the Canoe Mountain zone of the Landscape Unit, the licensee(s) shall meet with representatives of Land & Water BC Inc., and any approved resort developers, to discuss proposed area(s) for harvesting including: proposed size of cutblock(s); proposed level of retention and any patch openings; proposed harvesting technique(s); and any proposed road and landing locations. The licensee will also provide the above named parties with details on post-harvest clean-up and reforestation activities.
- b. No forest harvesting activities will occur in the area without the agreement of the Regional Director of MSRM Omineca-Peace Region.

- c. To minimize the impacts of forest harvesting activities on visitors to the resort developments, non-resort development related forest harvesting activity within a 1000 metres of developed resort lands within Zone 1 will be limited to the low season tourism periods - which includes the time period of mid-March through to the end of May and the months of October and November - unless otherwise approved by the District Manager after consultation with any approved resort developers.

Transition

This order comes into effect immediately. All new forest development plans and all amendments to forest development plans submitted after the effective date of this order must be consistent with this order. All forest stewardship plans submitted after the effective date of this order must be consistent with this order.

Effective Date of Order

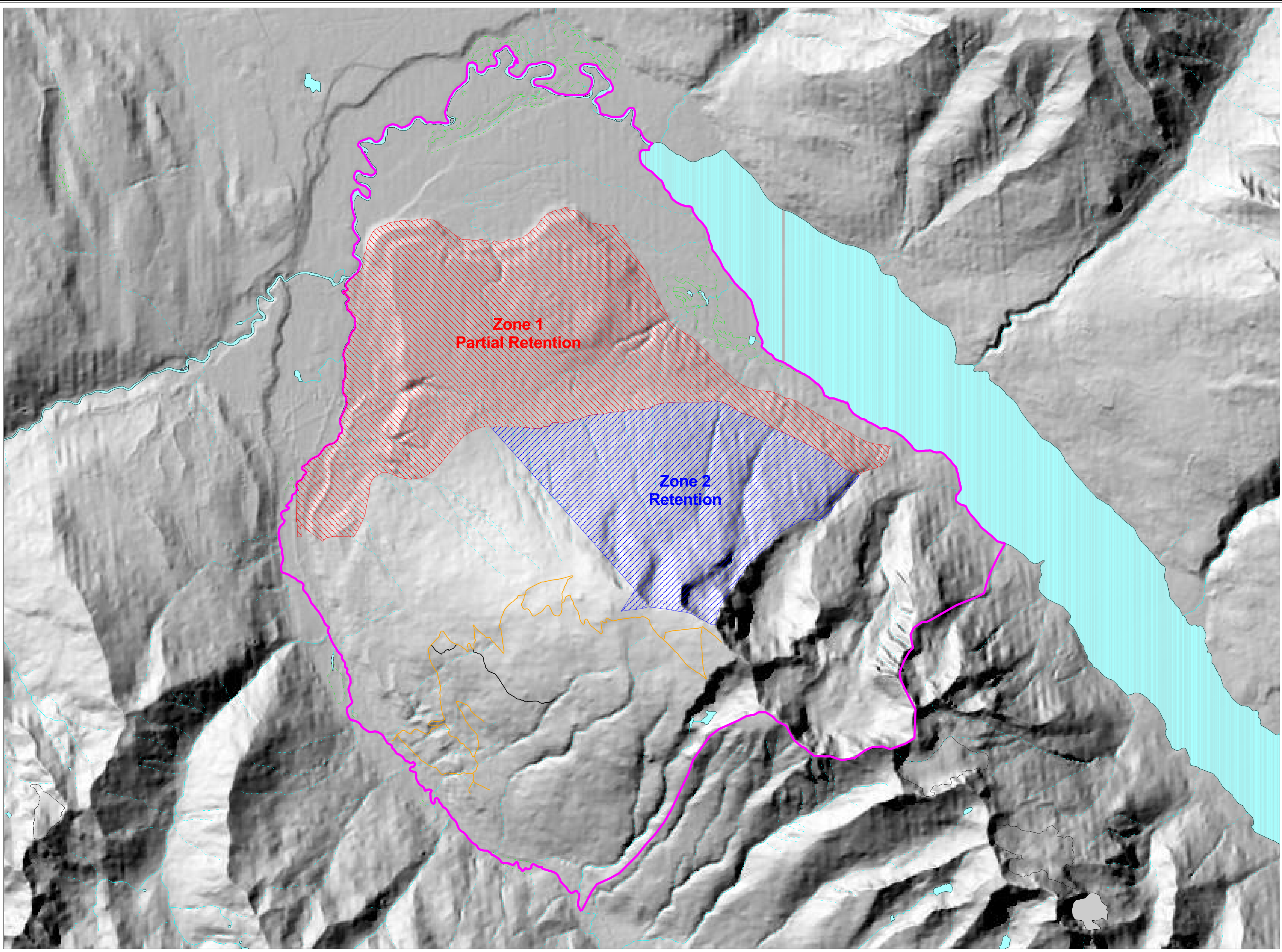
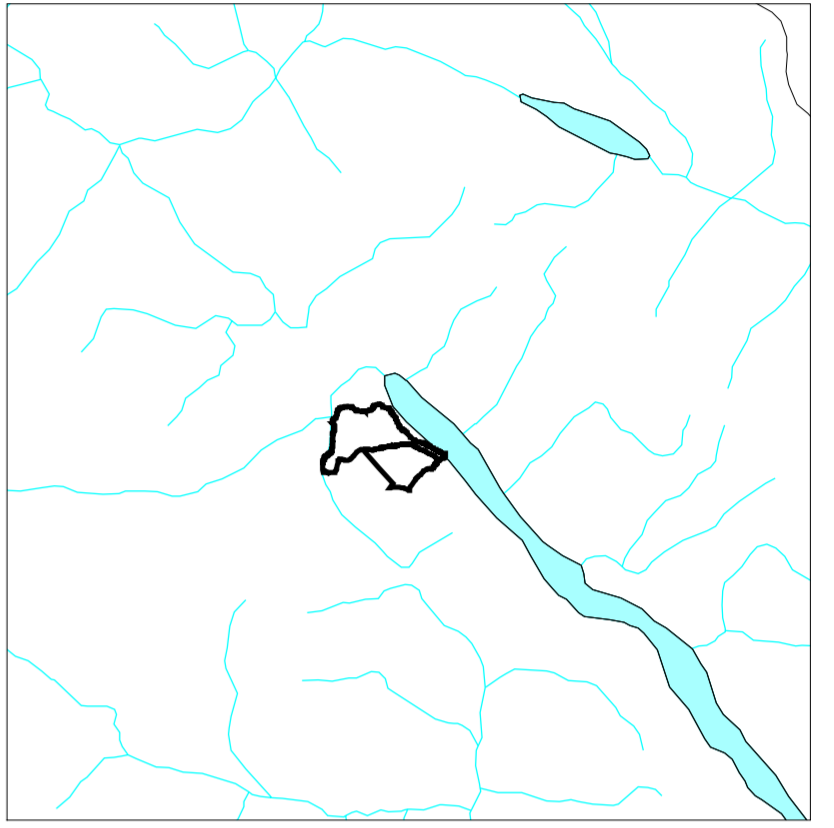
This Order takes effect on April 14, 2003.

(Original Paper version of this order signed by P. Zacharatos on April 7, 2003)

T.P (Phil) Zacharatos R.P.F.
Regional Director
Omineca-Peace Region
Ministry of Sustainable Resource Management

Date

MAP 3 Canoe Mountain Zone



Zone Boundaries
Zone 1 - Partial Retention
Zone 2 - Retention
Canoe Mountain Zone Boundary

Data Sources: Canoe Mountain Zone Boundary and Sub-Zones from LWBC



1:35000



Ministry of Sustainable Resource Management
Omineca-Peace Region (Prince George)
Project Date: January 24, 2003
Projection: BC Albers NAD 83