

Order to Establish the Humbug Landscape Unit and Objectives

Pursuant to section 4 (1) of the *Forest Practices Code of British Columbia Act* (the Act), the Humbug Landscape Unit in the Prince George Forest District (Omineca Peace MSRM Region), as indicated on Map 3, is established as a landscape unit.

Objectives for the Humbug Landscape Unit

Pursuant to section 4 (2) of the *Forest Practices Code of British Columbia Act*, the following are landscape unit objectives for the Dome Landscape Unit.

Objective 3. Meet the distribution of old growth for each Landscape Unit / Biogeoclimatic Unit (variant) by maintaining the old growth management areas (OGMAs) as shown on Map 3.

Strategy 3.01 Maintain old growth management areas, which are established as shown on the attached Map 3.

Strategy 3.02 Cutting trees within OGMAs, is limited to circumstances where it is absolutely necessary for insect or disease infestation control. When intervention in OGMAs is required because of a forest health threat to adjacent areas, retain structural features of old growth, as much as possible.

Strategy 3.03 Permanent roads may be constructed and maintained in OGMAs where there are no other practicable options. Temporary roads may also be constructed in OGMAs where there are no other practicable options. Any temporary roads that are built in OGMAs must be deactivated, rehabilitated and planted as soon as possible.

Strategy 3.04 Fire suppression is permitted within OGMAs for the purposes of maintaining the integrity of the OGMAs.

Transition

Pursuant to Section 10 (1) (d) (ii) of the *Forest Practices Code of British Columbia Act*, forest development plans submitted for approval on or following the effective date of the order are to be consistent with the objectives of this order.

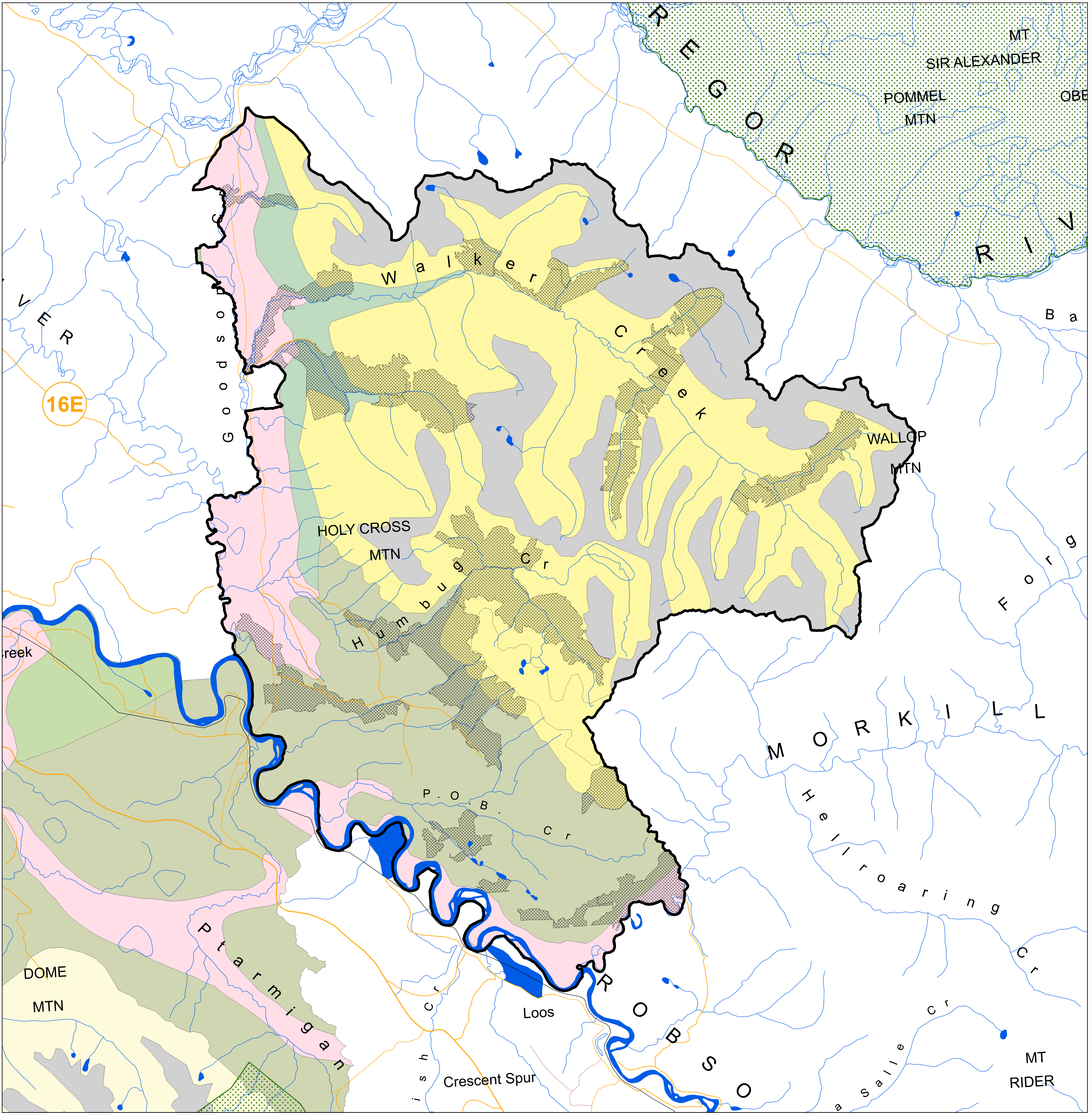
Effective Date of Order

This Order takes effect on August 1, 2003.

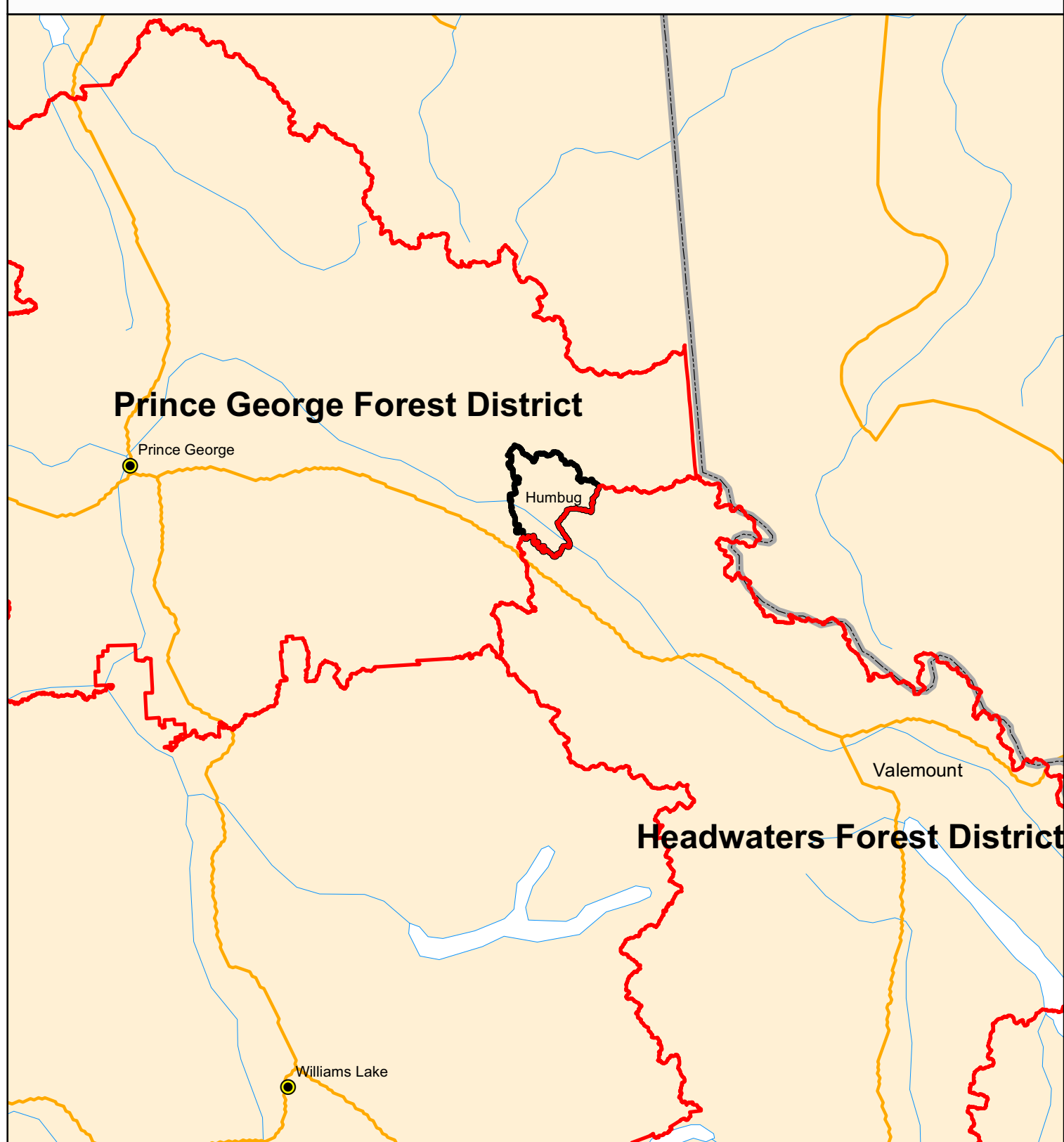
original signed
T. P. (Phil) Zacharatos, R.P.F.
Regional Director
Omineca-Peace Region
Ministry of Sustainable Resource Management

August 1, 2003
Date

HUMBUG OGMA'S

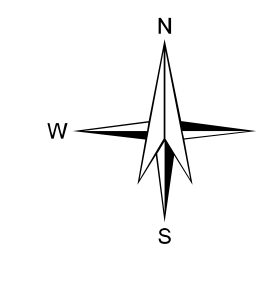
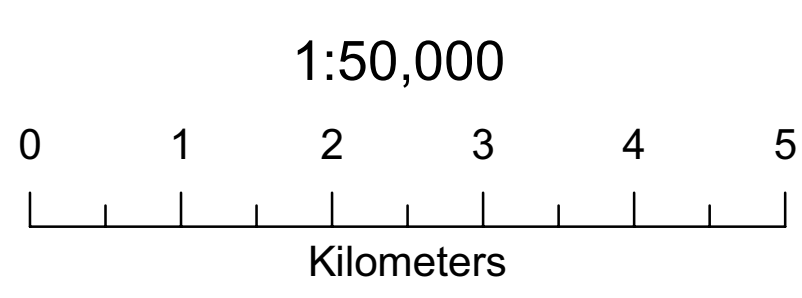
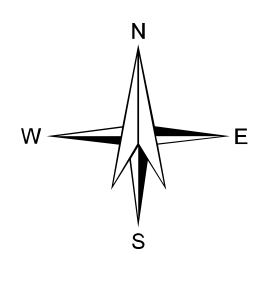


INSET MAP



Legend

- | | | | |
|----------------------|-----------------|--|----------|
| | OGMA | | ESSFwk 1 |
| | Parks | | ESSFwk 2 |
| Bec version 3 | | | |
| BECLABEL | | | |
| | AT p | | ICH vk 2 |
| | ESSFwk | | ICH wk 2 |
| | | | ICH wk 3 |
| | | | SBS vk |
| | Landscape Units | | |



Data Sources and Notes

OGMA - Slim, Dome, & Humbug
Data captured by ILMB (1:20,000)

Water, Roads, & Annotation
LRDW Warehouse (NTS - 1:250,000)

DISCLAIMER

This map is a visual representation
and is not to be used for legal purposes

Produced for:
ILMB - Regional Client Services Division



Prince George Service Center

Filepath: W:\srm\prg\Workarea\sb\prg_ogma\ogma.mxd
Projection/Datum: BCALBERS/NAD83
Date Created: August 01, 2003
Created by: Prince George Service Center, sb