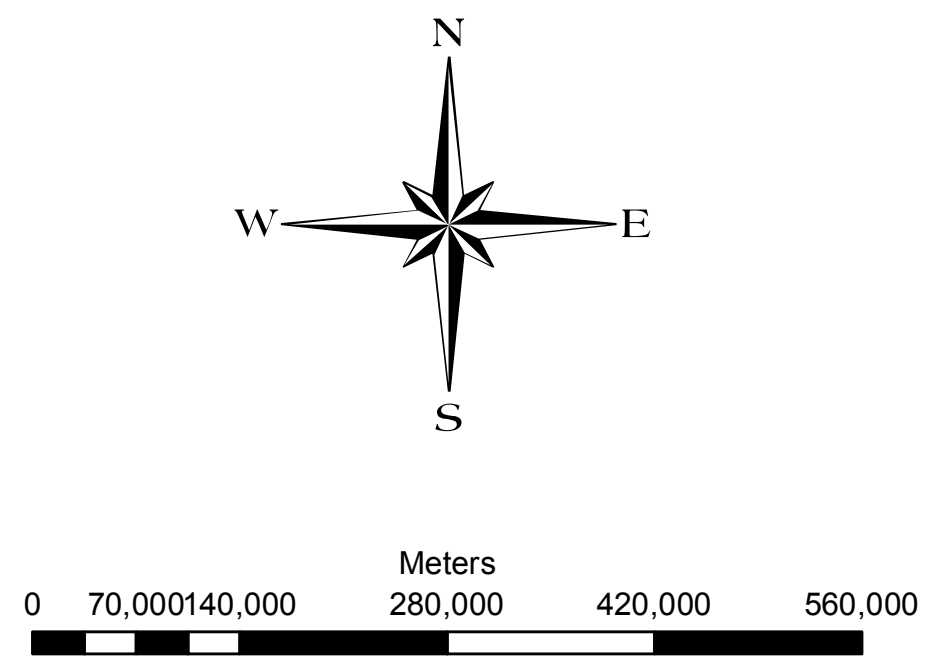
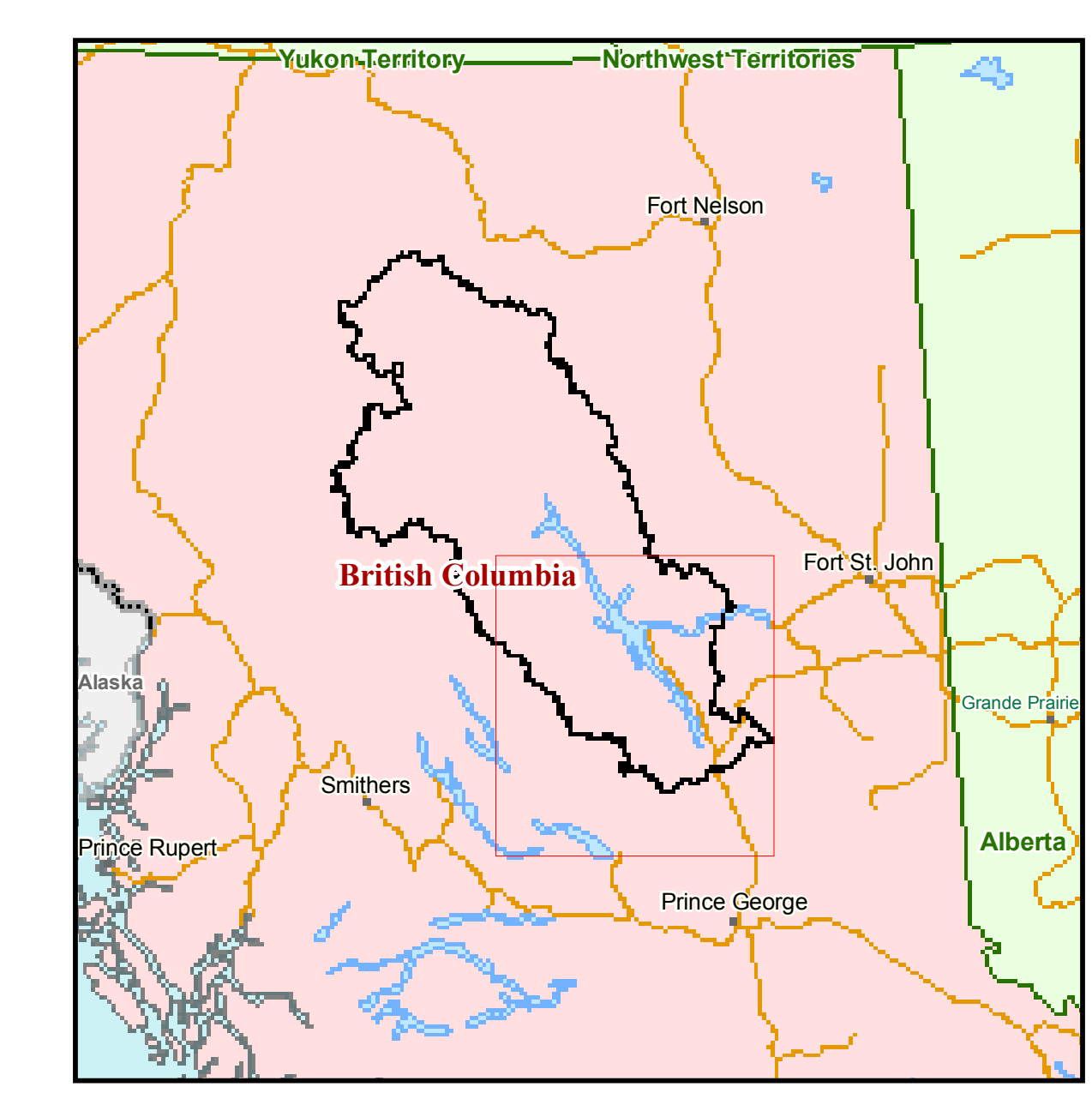
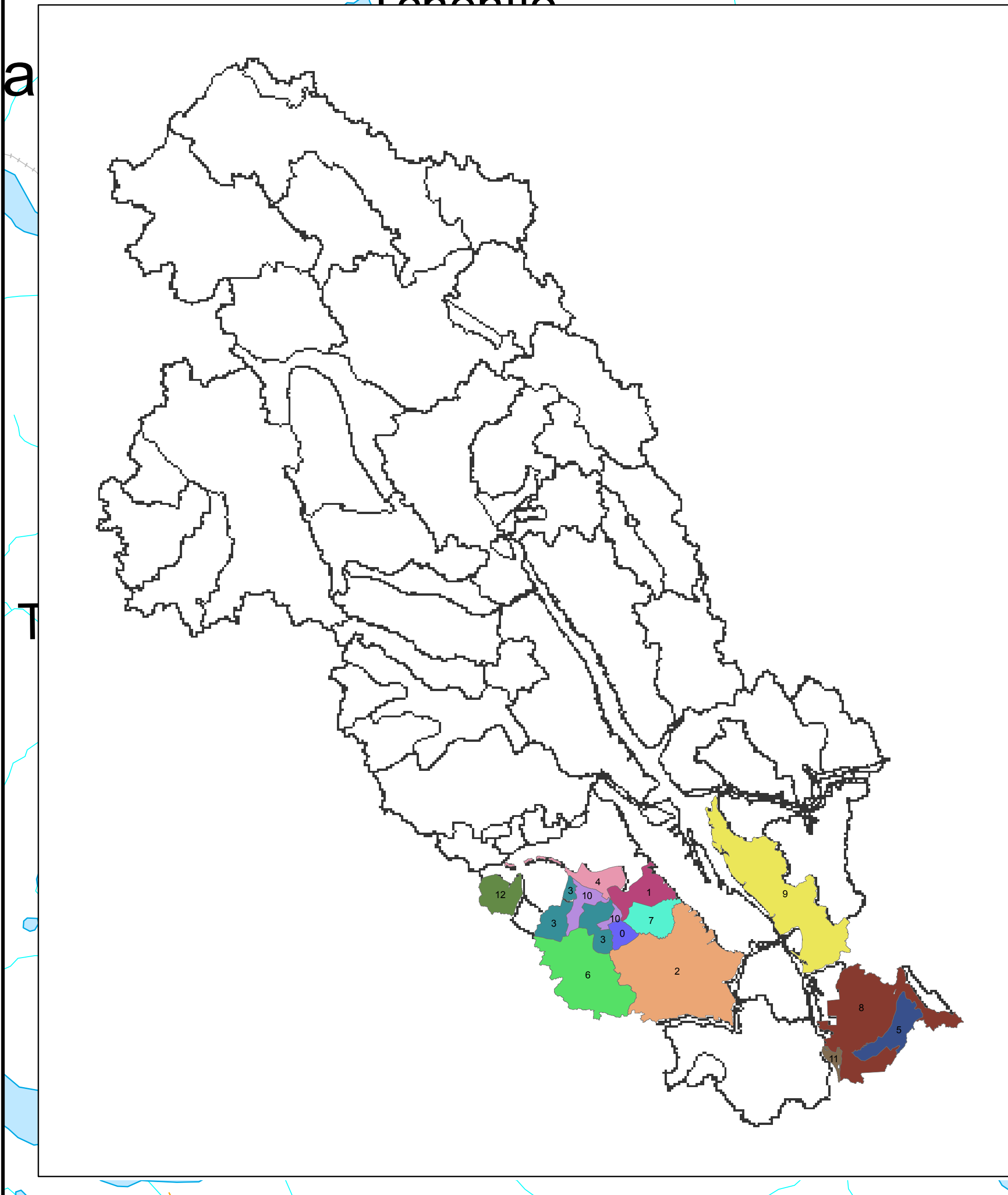
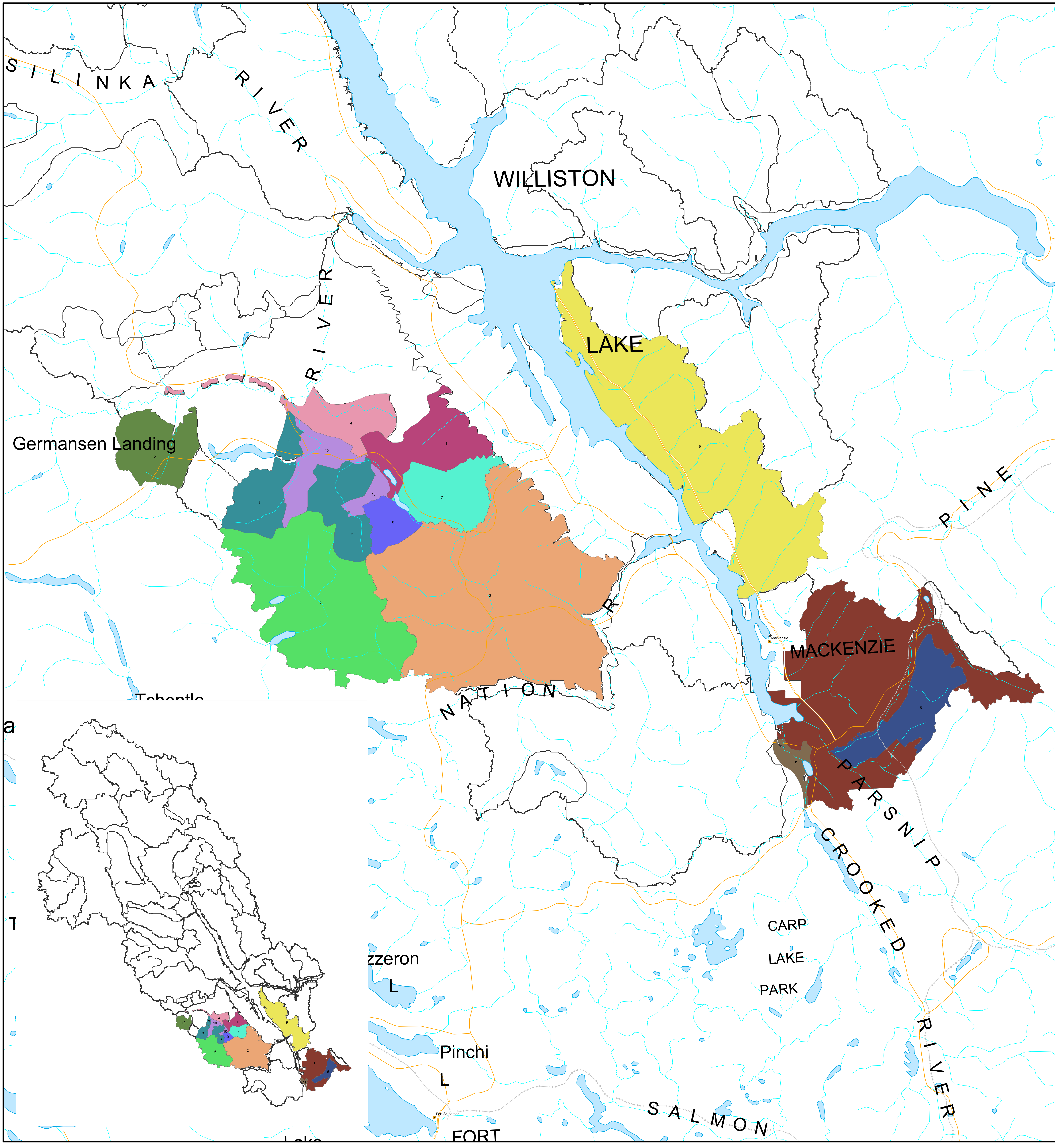


MAP OF LANDSCAPE UNITS OF MINISTERIAL ORDER FOR SPATIAL LAND USE OBJECTIVES January 2010



Spatial Landscape Units

- | | | |
|--------------------|-----------------|------------------------------------|
| 0, Connaghan Creek | 5, Kennedy | 10, South Germansen - Upper Manson |
| 1, Eklund | 6, Klawli | 11, Tudyah B |
| 2, Gaffney | 7, Manson River | 12, Twenty Mile |
| 3, Gillis | 8, Misinchinka | |
| 4, Jackfish | 9, Parsnip | |