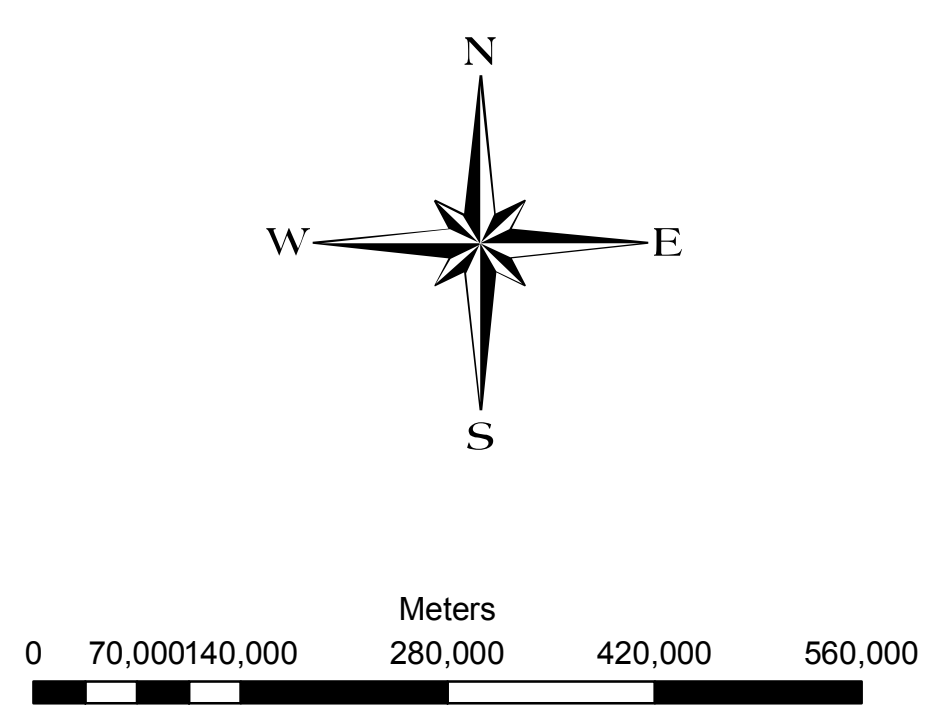
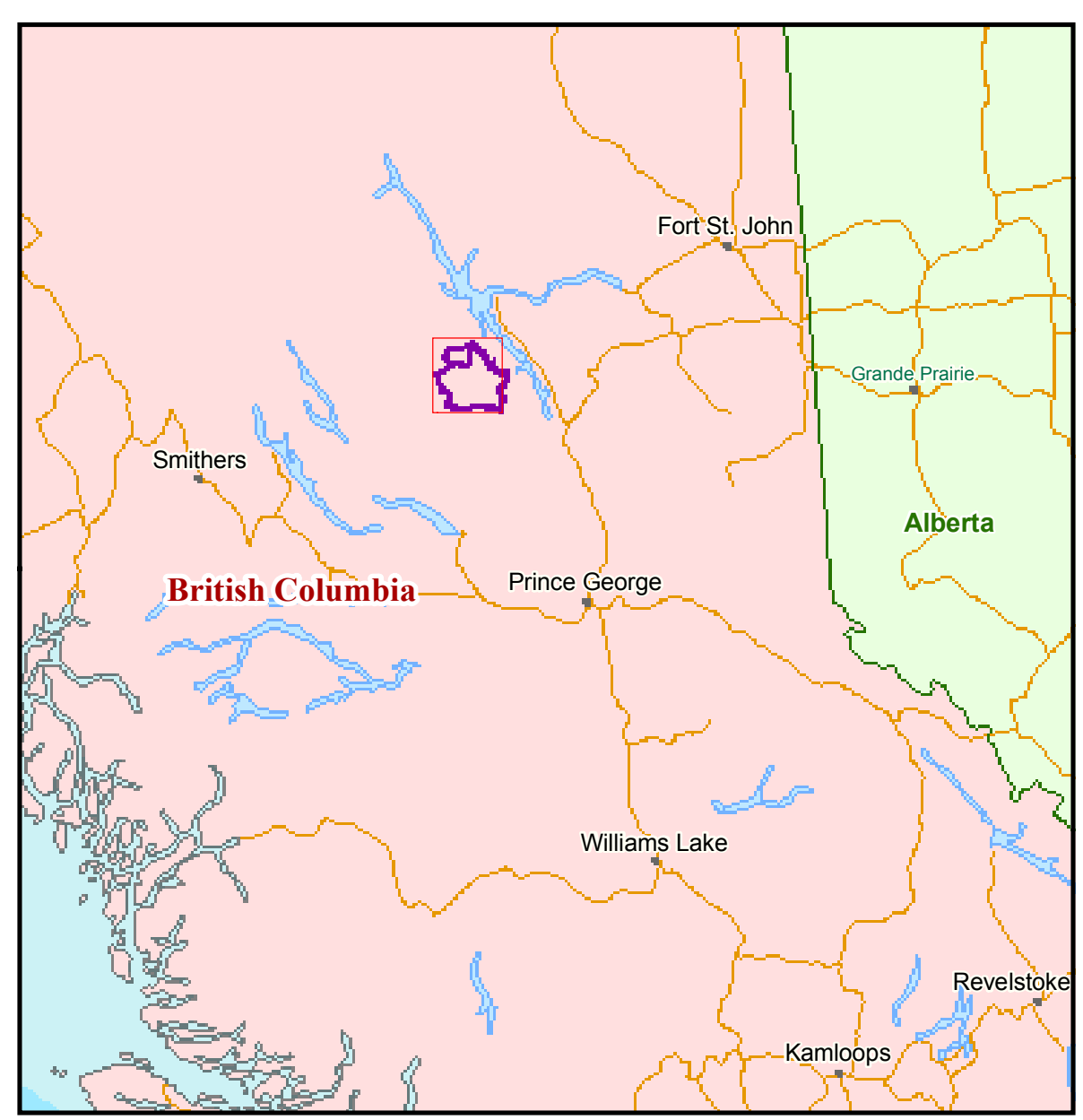
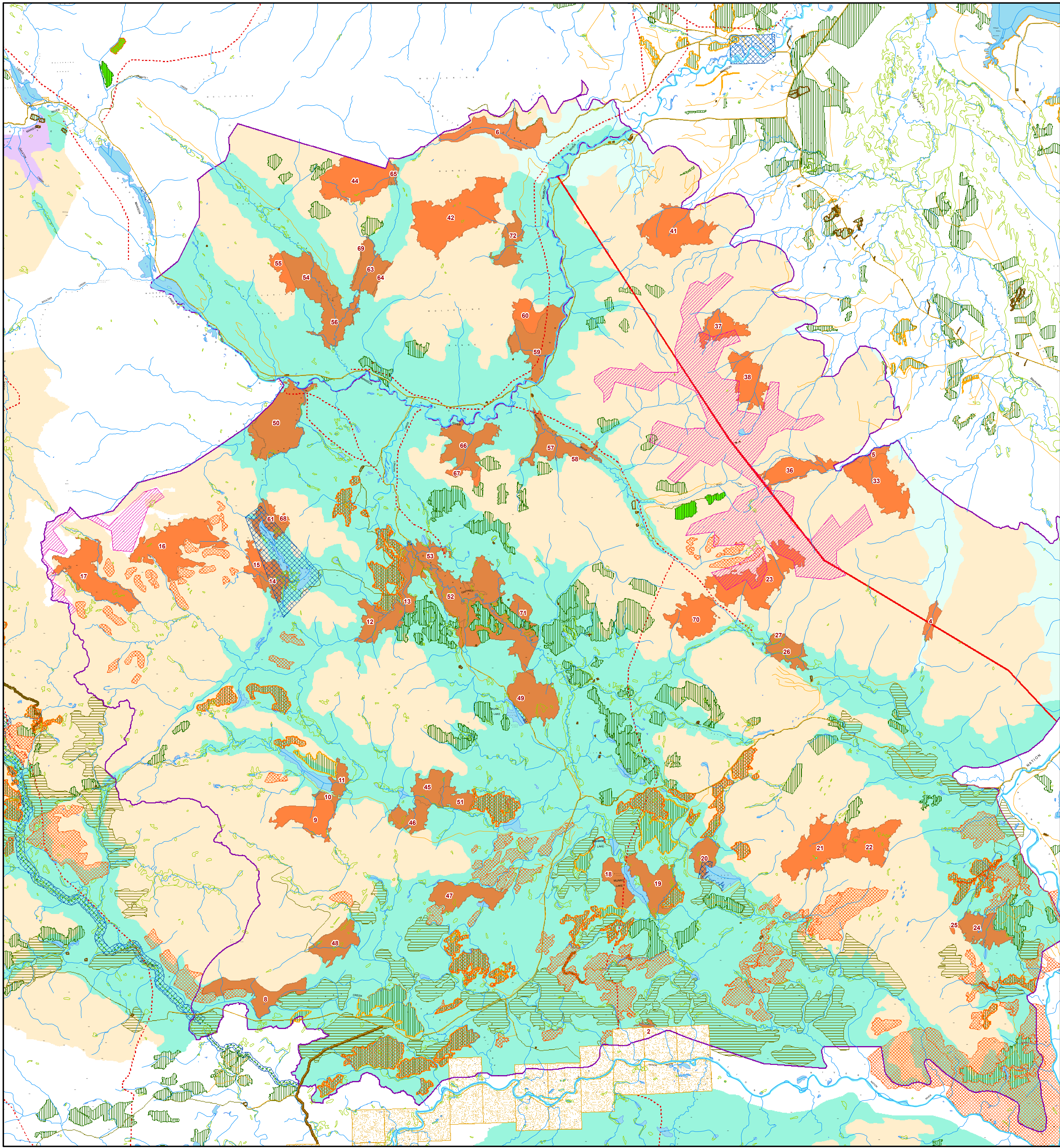


OLD GROWTH MANAGEMENT AREAS GAFFNEY/MANSON RIVER - LANDSCAPE UNITS

Map 2



<p>Landscape Unit</p> <ul style="list-style-type: none"> Gaffney/Manson River <p>Biogeoclimatic Ecosystem Classification</p> <ul style="list-style-type: none"> Group II - ESSF mv3 Group III - ESSF wc3/ESSF wk2 Group IV - SBS mk1/SBS mk2/SBS wk1 Group V - SBS vk/SBS wk2 BWBS dk1 (Con) <p>Tantalis Crown Tenure</p> <ul style="list-style-type: none"> Waterpower Transmission Line Windpower <p>Crown/Private</p> <ul style="list-style-type: none"> Crown - Provincial, Municipal, Federal Private First Nations 	<p>OGMA</p> <ul style="list-style-type: none"> Old Growth Management Areas <p>Forest Tenure Data</p> <ul style="list-style-type: none"> Forest Service Road Timber Use Polygon Timber Sale Polygons Cut Block Timber Licence Cutting Permit <p>BCTS</p> <ul style="list-style-type: none"> Planned Blocks Operational 	<p>Trails and Recreation Areas</p> <ul style="list-style-type: none"> Heritage Trails Recreation Trails Recreation Areas <p>Base</p> <ul style="list-style-type: none"> Road Rail Marsh; Swamp Lake/Reservoir River or Stream - Definite
---	--	--

Where an objective refers to an area shown on a map and the area is also defined by a source spatial dataset, the boundaries of the area as defined by a source spatial dataset will apply. All source spatial datasets are available in the Geographic Data Warehouse: www.geobc.gov.bc.ca