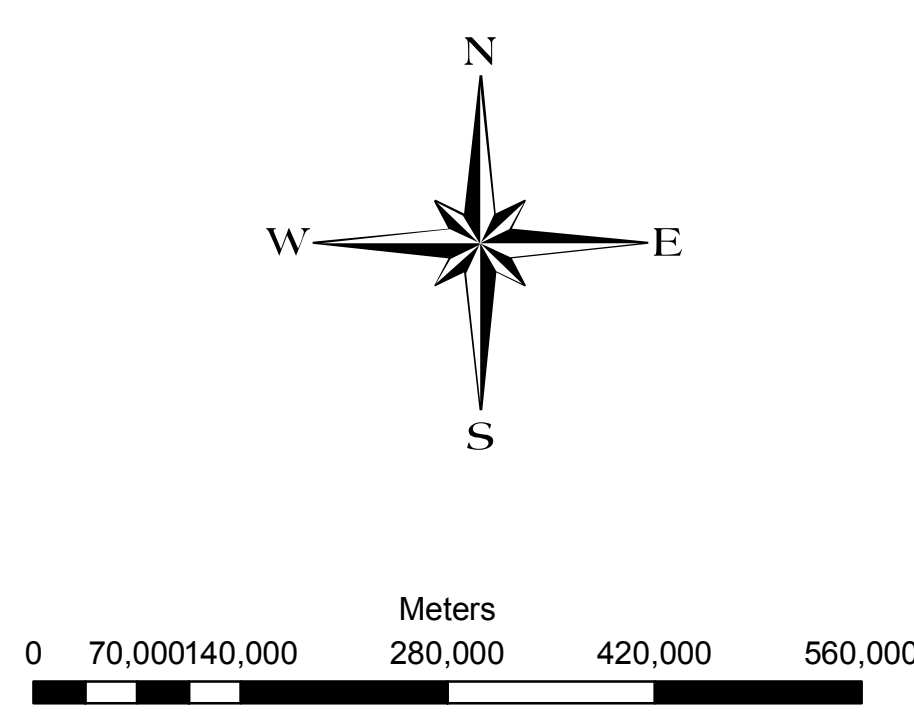
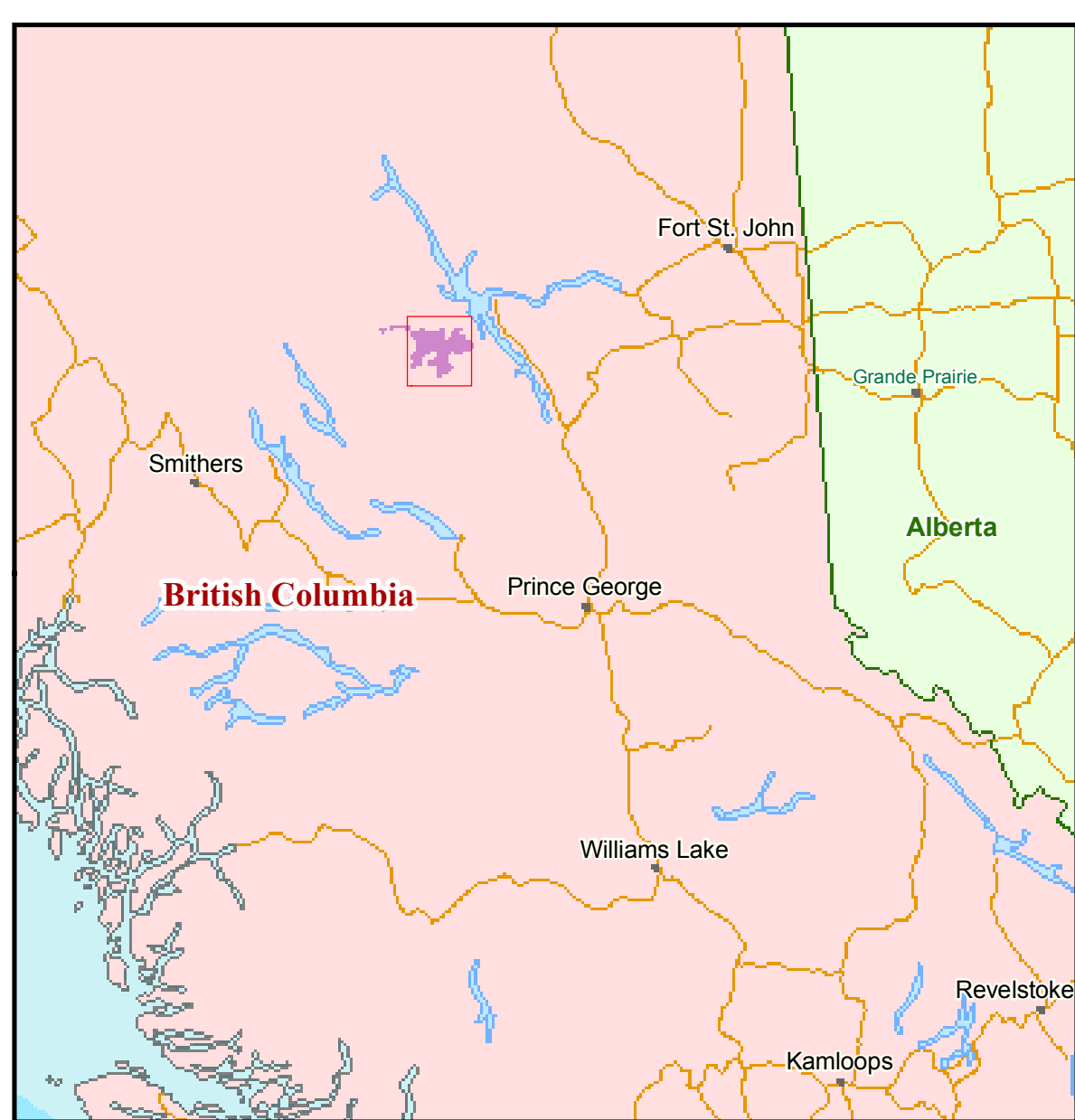
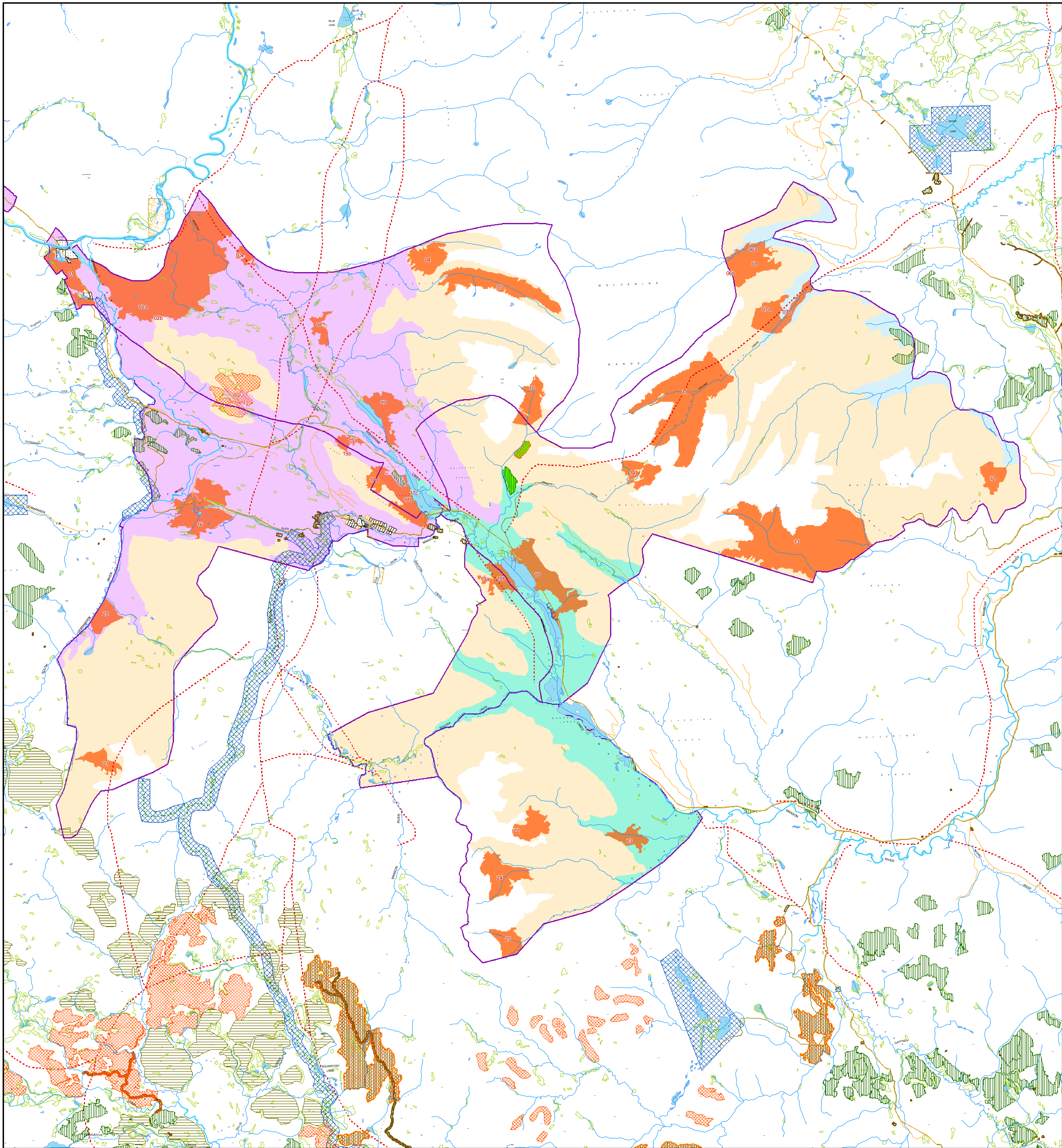


# OLD GROWTH MANAGEMENT AREAS CONNAGHAN CREEK/EKLUND/JACKFISH/ SOUTH GERMANSEN/UPPER MANSON - LANDSCAPE UNITS

**Map 1**



<p><b>Landscape Unit</b></p> <ul style="list-style-type: none"> <li><span style="border: 1px solid purple; display: inline-block; width: 15px; height: 10px; margin-right: 5px;"></span> Connaghan Creek/Eklund/Jackfish/South Germanesen/Upper Manson</li> <li><span style="border: 1px solid orange; display: inline-block; width: 15px; height: 10px; margin-right: 5px;"></span> Twenty Mile</li> </ul>	<p><b>Trails and Recreation Areas</b></p> <ul style="list-style-type: none"> <li><span style="border-bottom: 1px dashed red; width: 20px; display: inline-block; margin-right: 5px;"></span> Heritage Trails</li> <li><span style="border-bottom: 1px dotted green; width: 20px; display: inline-block; margin-right: 5px;"></span> Recreation Trails</li> <li><span style="border: 1px solid blue; width: 15px; height: 10px; margin-right: 5px;"></span> Recreation Areas</li> </ul>
<p><b>Biogeoclimatic Ecosystem Classification</b></p> <ul style="list-style-type: none"> <li><span style="background-color: purple; width: 15px; height: 10px; margin-right: 5px;"></span> Group VII - BWBSdk1</li> <li><span style="background-color: orange; width: 15px; height: 10px; margin-right: 5px;"></span> Group II - ESSFmc/ESSFmv2/ESSFmv3/ESSFmv4/SWBmk</li> <li><span style="background-color: green; width: 15px; height: 10px; margin-right: 5px;"></span> Group IV - SBSmk1/SBSmkw/SBSwk1</li> <li><span style="background-color: blue; width: 15px; height: 10px; margin-right: 5px;"></span> Group V - SBSvk/SBSwk2</li> </ul>	<p><b>OGMA</b></p> <ul style="list-style-type: none"> <li><span style="background-color: orange; width: 15px; height: 10px; margin-right: 5px;"></span> Old Growth Management Areas</li> </ul>
<p><b>Crown/Private</b></p> <ul style="list-style-type: none"> <li><span style="background-color: #f0f0f0; width: 15px; height: 10px; margin-right: 5px;"></span> Crown - Provincial, Municipal, Federal</li> <li><span style="background-color: #e0e0e0; width: 15px; height: 10px; margin-right: 5px;"></span> Private</li> <li><span style="background-color: #d0d0d0; width: 15px; height: 10px; margin-right: 5px;"></span> First Nations</li> </ul>	<p><b>Forest Tenure Data</b></p> <ul style="list-style-type: none"> <li><span style="border-bottom: 1px solid black; width: 20px; display: inline-block; margin-right: 5px;"></span> Forest Service Road</li> <li><span style="border: 1px solid black; width: 15px; height: 10px; margin-right: 5px;"></span> Timber Use Polygon</li> <li><span style="border: 1px solid black; width: 15px; height: 10px; margin-right: 5px;"></span> Timber Sale Polygons</li> <li><span style="border: 1px solid black; width: 15px; height: 10px; margin-right: 5px;"></span> Cut Block</li> <li><span style="background-color: green; width: 15px; height: 10px; margin-right: 5px;"></span> Timber Licence Cutting Permit</li> </ul>
<p><b>BCTS</b></p> <ul style="list-style-type: none"> <li><span style="background-color: #f0f0f0; width: 15px; height: 10px; margin-right: 5px;"></span> Planned Blocks</li> <li><span style="background-color: #e0e0e0; width: 15px; height: 10px; margin-right: 5px;"></span> Operational</li> </ul>	<p><b>Base</b></p> <ul style="list-style-type: none"> <li><span style="border-bottom: 1px solid black; width: 20px; display: inline-block; margin-right: 5px;"></span> Road</li> <li><span style="border-bottom: 1px dashed black; width: 20px; display: inline-block; margin-right: 5px;"></span> Rail</li> <li><span style="background-color: #e0ffe0; width: 15px; height: 10px; margin-right: 5px;"></span> Marsh; Swamp</li> <li><span style="background-color: #add8e6; width: 15px; height: 10px; margin-right: 5px;"></span> Lake/Reservoir</li> <li><span style="border-bottom: 1px solid blue; width: 20px; display: inline-block; margin-right: 5px;"></span> River or Stream - Definite</li> </ul>

Where an objective refers to an area shown on a map and the area is also defined by a source spatial dataset, the boundaries of the area as defined by the source spatial dataset will apply. All source spatial datasets are available in the Geographic Data Warehouse: [www.geobc.gov.bc.ca](http://www.geobc.gov.bc.ca)