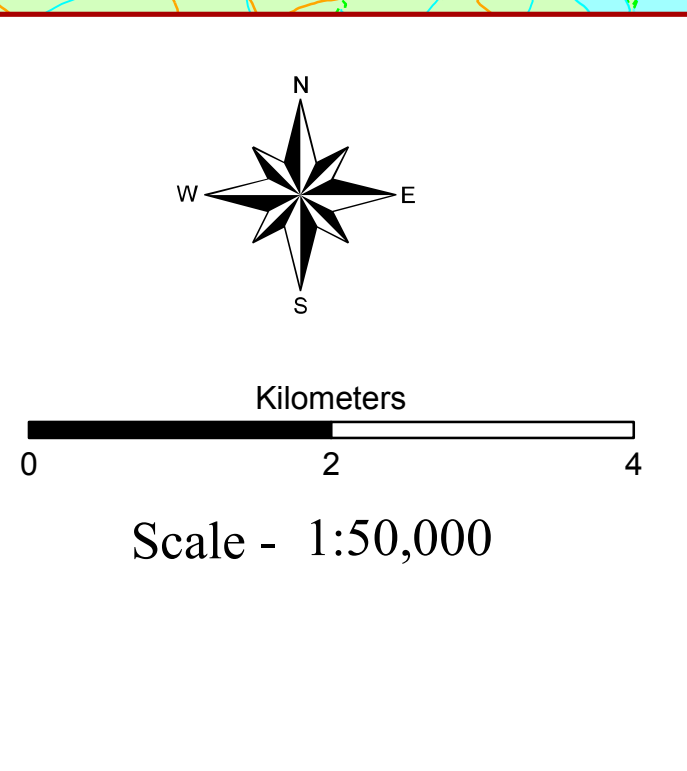


MACKENZIE CROWN LAND PLAN



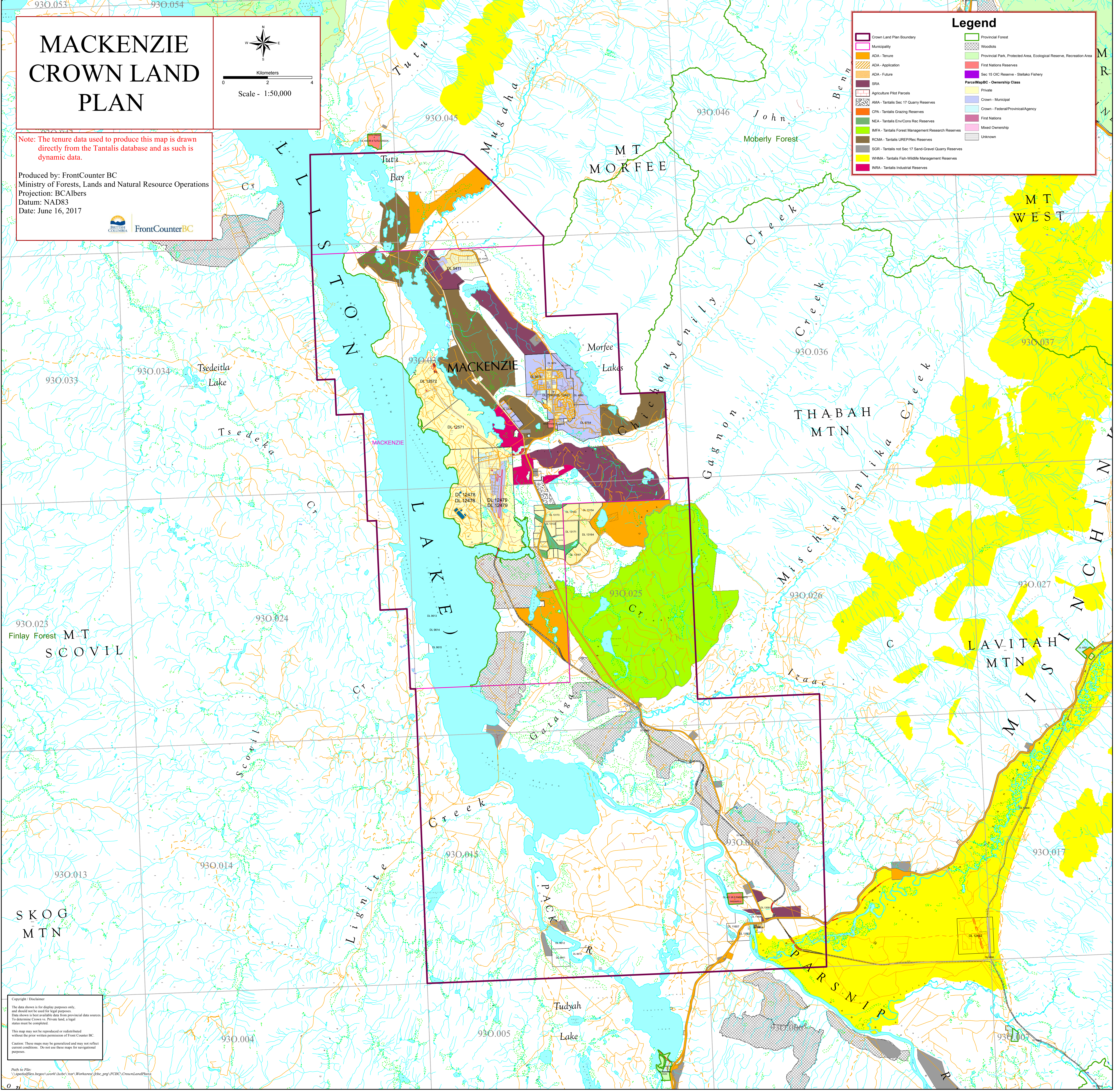
Note: The tenure data used to produce this map is drawn directly from the Tantalus database and as such is dynamic data.

Produced by: FrontCounter BC
Ministry of Forests, Lands and Natural Resource Operations
Projection: BCAlbers
Datum: NAD83
Date: June 16, 2017



Legend

| | |
|---|--|
| Crown Land Plan Boundary | Provincial Forest |
| Municipality | Woodlots |
| ADA - Tenure | Provincial Park, Protected Area, Ecological Reserve, Recreation Area |
| ADA - Application | First Nations Reserves |
| ADA - Future | Sec 15 OIC Reserve - Stellako Fishery |
| SRA | ParcelMapBC - Ownership Class |
| Agriculture Pilot Parcels | Private |
| AMA - Tantalus Sec 17 Quarry Reserves | Crown - Municipal |
| CPA - Tantalus Grazing Reserves | Crown - Federal/Provincial/Agency |
| NEA - Tantalus Env/Cons Rec Reserves | First Nations |
| IMFA - Tantalus Forest Management Research Reserves | Mixed Ownership |
| RCMA - Tantalus UREP/Rec Reserves | Unknown |
| SGR - Tantalus not Sec 17 Sand-Gravel Quarry Reserves | |
| WHMA - Tantalus Fish-Wildlife Management Reserves | |
| INRA - Tantalus Industrial Reserves | |



Copyright / Disclaimer
The data shown is for display purposes only, and should not be used for legal purposes. Data shown is best available data from provincial data sources. To determine Crown vs. Private land, a legal status must be completed.
This map may not be reproduced or redistributed without the prior written permission of FrontCounter BC.
Caution: These maps may be generalized and may not reflect current conditions. Do not use these maps for navigational purposes.

Path to File:
\\sp1net01\files\begin\work\lucbe\lucbe\workarea\fcbc\proj\FCBC\CrownLandPlans