

Ministry of Agriculture and Land

Ministerial Order

Non-spatial Landscape Biodiversity Objectives of the Fort Nelson Forest District

Part I - Interpretation

Relationship with the Forest and Range Practices Act.

1.1 Pursuant to section 93.4 of *The Land Act* the following objectives are established as land use objectives for the purposes of the Forest and Range Practices Act and apply to the landscape units shown on Map #1 and listed in Table 1.

1.2 Landscape units established under the "*Order Establishing Provincial Non-Spatial Old Growth Objectives (June 30, 2004)*" will, on the effective date of this order, cease to have an effect for the area in this new order.

Part 2 - Objectives

Old Forest Retention Requirements.

2.1 Maintain Old Forest on the Crown Forested Land Base (CFLB) in accordance with Map 2 and Table 2.

2.2 These objectives apply to all Crown Land in the Fort Nelson Forest District, except for lands covered by woodlot licences, research forests or community forests licences that are 600 hectares or smaller.

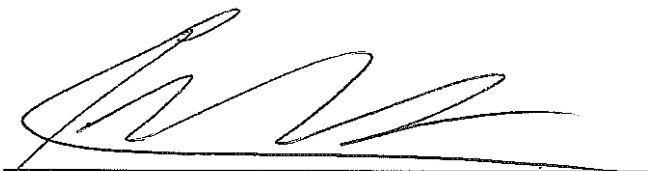
2.3 These objectives replace the *Order Establishing Provincial Non-Spatial Old Growth Objectives (June 30, 2004)* for the areas covered by this order.

Part 3 - Implementation

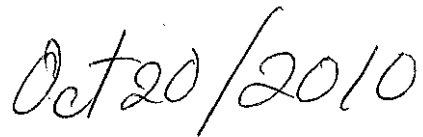
Effective Date

3.1 This Order, and the land use objectives in this Order, takes effect on the day that the notice of this Order is published in the Gazette.

3.2 The applicable period under Section 8(2) (b) of the Forest and Range Practices Act is 12 months, starting on the date this order comes into effect.



Eamon O'Donoghue
Regional Executive Director, Northern Region
Integrated Land Management Bureau



Date

Map 1. Landscape Units of the Fort Nelson Forest District.

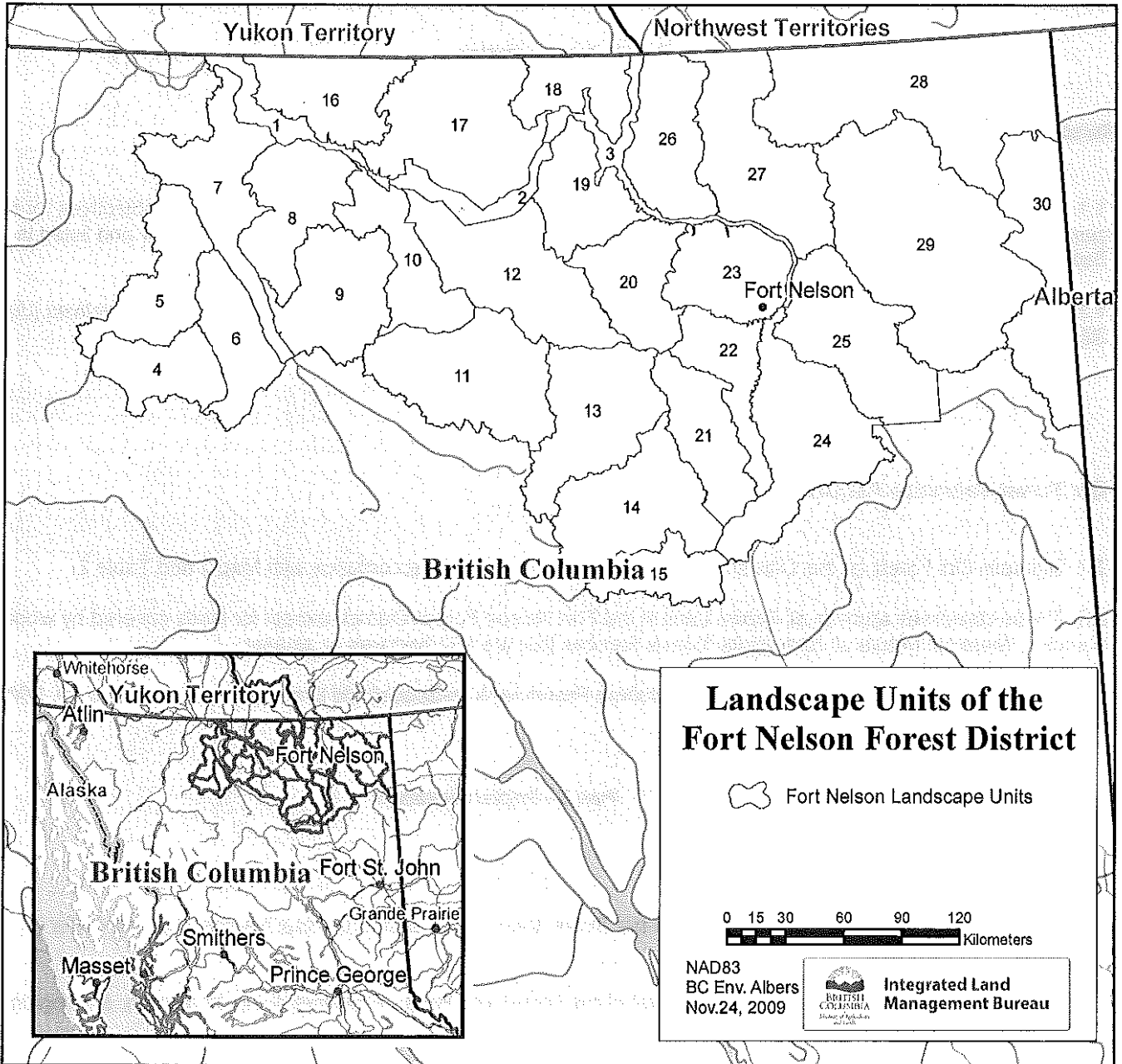


Table1: Landscape Units of the Fort Nelson Forest District.

Landscape Unit (LU) Number	Landscape Unit (LU) Name		Landscape Unit (LU) Number	Landscape Unit (LU) Name
1	Liard River		16	Smith
2	Liard River Corridor Park		17	Hyland
3	Nelson Forks		18	Beaver
4	Sharktooth		19	Irene
5	Major Hart		20	Kledo
6	Boreal		21	Holden
7	Kechika		22	Klowee
8	Rabbit		23	Cridland
9	Netson		24	Klua
10	Muncho		25	Clarke
11	Churchill		26	Sandy
12	Sulpher/8 Mile		27	Kiwigana
13	Tuchodi		28	Petitot
14	Gathto		29	Kotcho
15	Prophet		30	Shekillie

Part II Objectives

1. Old Forest Retention

Maintain Old Forest on the Crown Forest Land Base (CFLB) in accordance with Map 2 and Table 2.

Map 2. Natural Disturbance Units of the Fort Nelson Forest District.

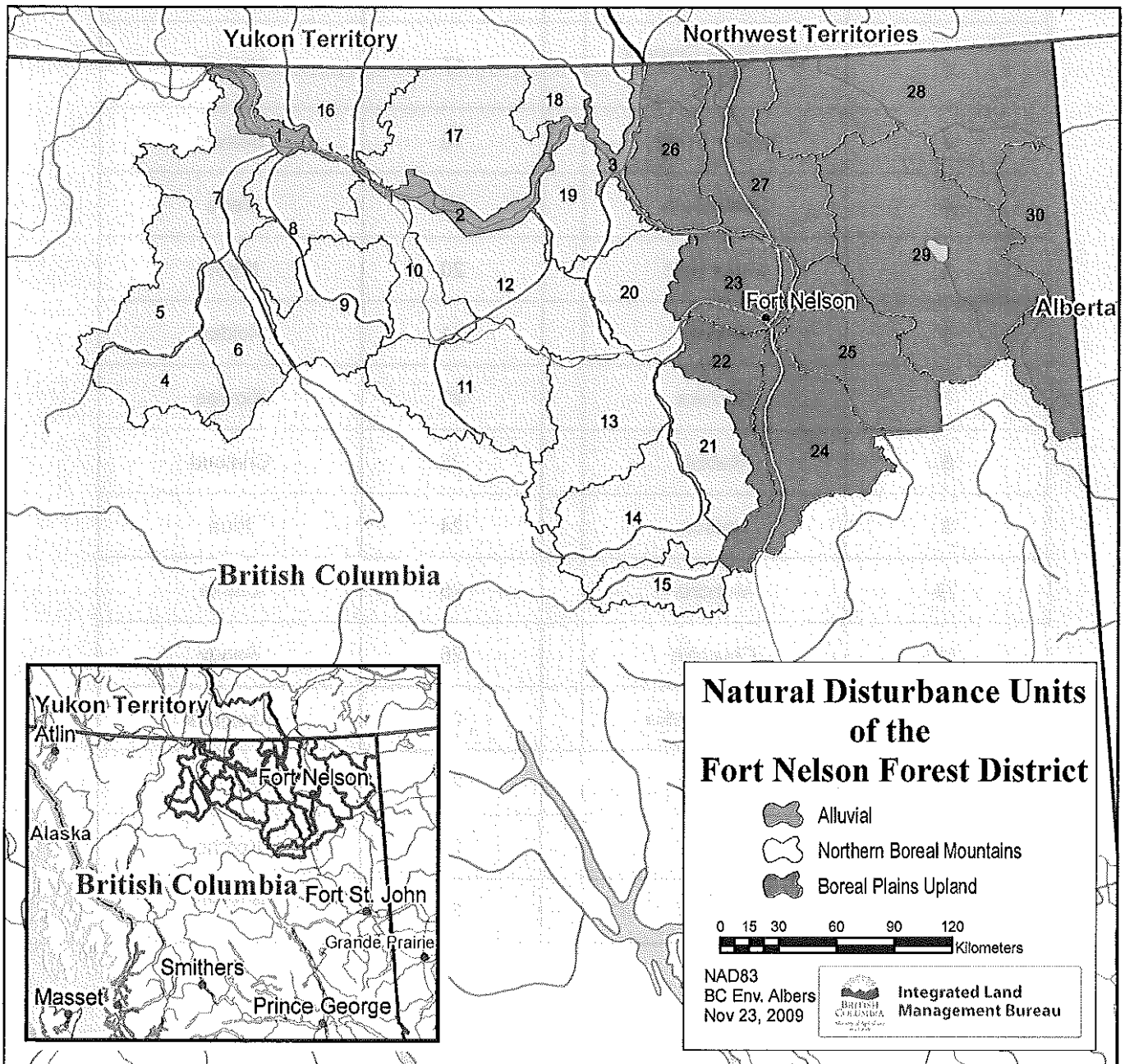


Table 2: Old Forest Retention Requirements by Natural Disturbance Unit (or Landscape Unit Group) for the Fort Nelson Forest District

Natural Disturbance Unit	Landscape Units	Age of old	Minimum % of CFLB retained as Old Forest
Alluvial	1 Liard River 2 Liard River Corridor Park 3 Nelson Forks	Conifer 140 Deciduous 100	44
Northern Boreal Mountains	4 Sharktooth 5 Major Hart 6 Boreal 7 Kechika 8 Rabbit 9 Netson 10 Muncho 11 Churchill 12 Sulpher/8 Mile 13 Tuchodi 14 Gathto 15 Prophet 16 Smith 17 Hyland 18 Beaver 19 Irene 20 Kledo 21 Holden	140	37
Boreal Plains Uplands	22 Klowee 23 Cridland 24 Klua 25 Clarke 26 Sandy 27 Kiwigana 28 Petitot 29 Kotcho 30 Shekilie	Conifer 140 Deciduous 100	17