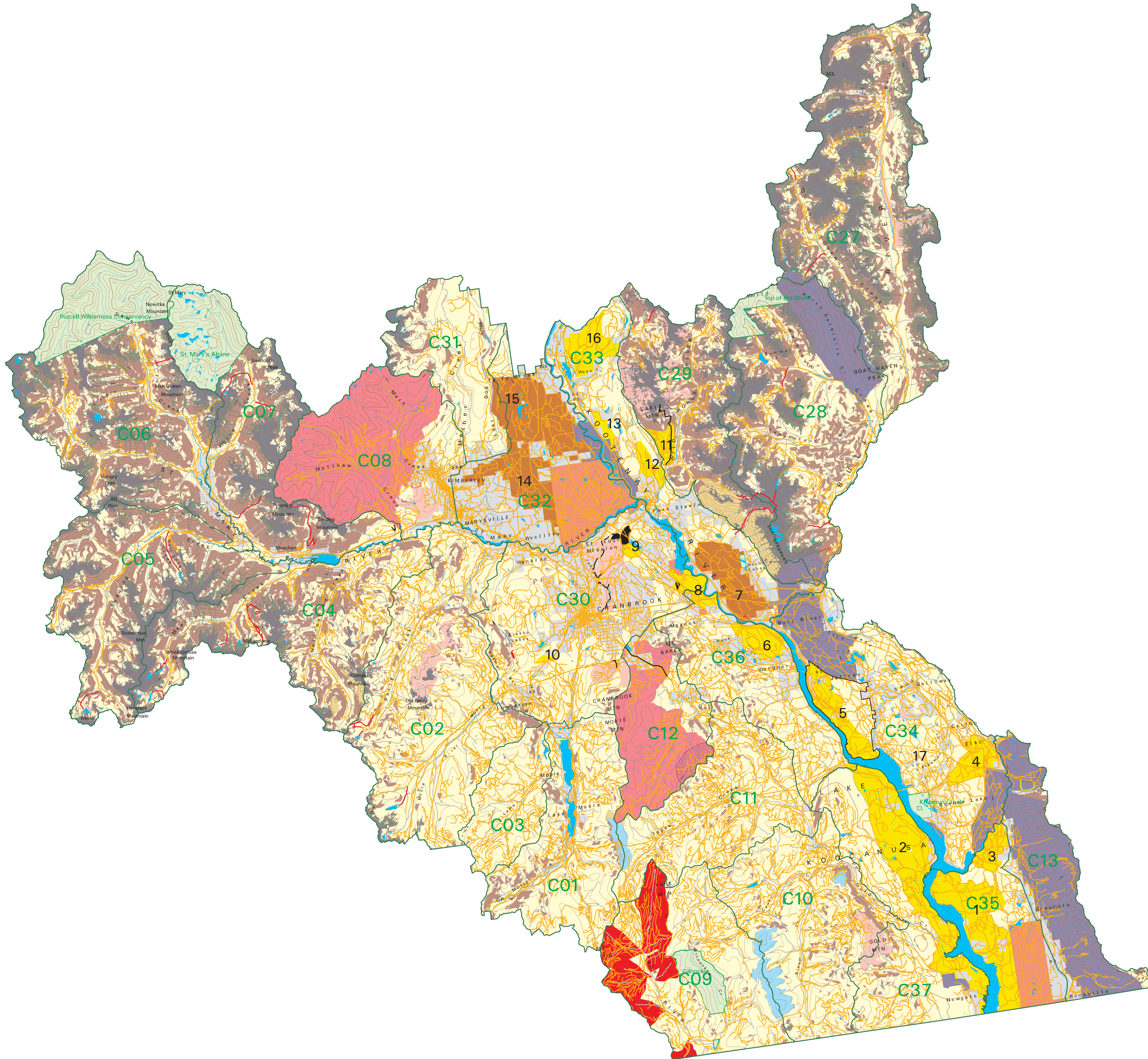


MAP 1
Recreation Management Strategy
Cranbrook District West - April 2 - Nov. 30



Legend

Area Designations

- Alpine (hard surface roads only)
- Avalanche Path (hard surface roads only)
- Non-Motorized
- Motorized
- Sensitive Area - Motorized (Hard Surfaces only)
- Ungulate Winter Range: Grasslands (Hard Surfaces only) (Reference Nos. 1-17; Table B)
- Endangered Species Habitat (Tailed Frog)
- Detailed linework to be completed to identify specific areas for Motorized & Hard Surfaces in the grasslands (Table B)
- Greater Than 40% Slope (Hard Surfaces only)
- Community Watershed (Refer to Objective 1-9.b)
- Community Watershed - Hard Surfaces only
- "Candidate" Intensive Use Area
- Mid-Elevation Grasslands (Status to be Resolved)
- Landscape Unit Boundaries

Road Designations

- Non-Motorized
- Non-Motorized (Closed Oct.15 - March 31)
- Ministry of Forests Recreation Trail
- Motorized
- Motorized when ground conditions are dry
- Mechanized non-motorized (Closed March 1 - June 14; Obj.1-1.f)
- Other Roads
- Private Land
- Native Reserve
- Federal Land
- Parks
- Access Management Area (As per Wildlife Act Regulations)

Scale : 1 : 175 000
 Map Projection : BC Albers
 Datum : NAD 83
 Contour Interval 100m

0 20
 KILOMETERS

Kookanusa Reservoir Drawdown Zone:
 - Motorized except for identified Archeological Sites and Riparian Areas.

Parks/Protected Areas
 - Access is directed by Park Management Plans

Access Management Areas (Wildlife Act):
 - Boundaries are approximate. Refer to The Hunting and Trapping Regulations Synopsis for accurate boundary locations.
 - AMAs are in place to protect and/or manage wildlife resources

VAHC:
 - There are Vehicular Hunting Closures (Section 108, Wildlife Act) within the RMS area that do not show on this map and which may prohibit the use of a motorized vehicle for the purpose of hunting to protect and/or manage wildlife resources.
 - Please refer to the Hunting Regulations for locations and further information on these closures.

Data Used for this map:

- Ungulate Winter Range
- Grasslands
- Sensitive Habitat Data
- TRIM roads
- NTS contours, water and annotation
- Caribou habitat
- Wetlands
- Parks
- AMAs
- Forest Cover
- Biogeoclimatic Zones
- Community Watersheds
- Native reserves
- Community Forest
- Private Land
- Avalanche tracks

MAP 2

Recreation Management Strategy Cranbrook District West - Dec.1 - April 1

Legend

Area Designations

- Goat & Sheep Winter Range (Non-Motorized)
- Motorized
- Ungulate Winter Range: Motorized on Roads, Identified Corridors and Cutblocks Only
- Community Watershed (refer to Objective 1-9.b)
- Community Watershed - Hard Surfaces only

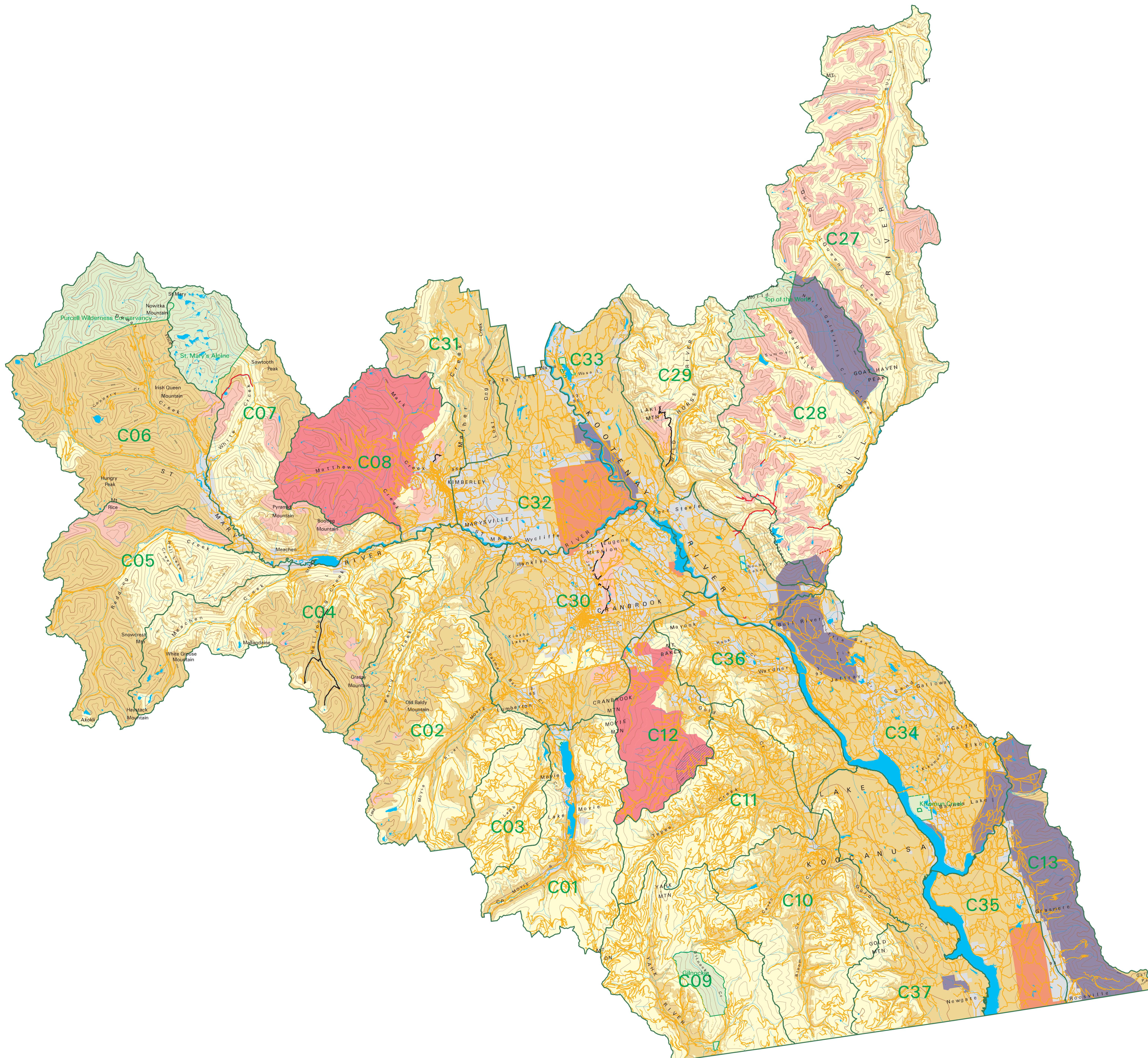
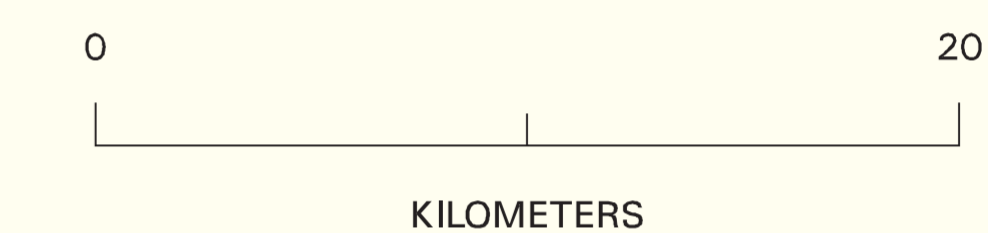
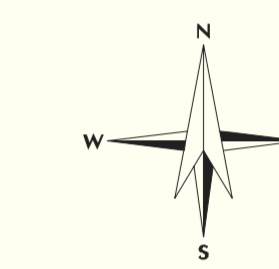
Road Designations

- Non-Motorized
- Non-Motorized (Closed Oct.15 - March 31)
- Ministry of Forests Recreation Trail
- Motorized
- Motorized when ground conditions are dry
- Other Roads

Landscape Unit Boundaries

- Private Land
- Native Reserve
- Federal Land
- Parks
- Access Management Area (As per Wildlife Act Regulations)

Scale : 1 : 175 000
Map Projection : BC Albers
Datum : NAD 83
Contour Interval 100m



Kookanusa Reservoir Drawdown Zone:
- Motorized except for identified Archeological Sites and Riparian Areas.

Parks/Protected Areas
- Access is directed by Park Management Plans

Access Management Areas (Wildlife Act):
- Boundaries are approximate. Refer to The Hunting and Trapping Regulations Synopsis for accurate boundary locations.
- AMAs are in place to protect and/or manage wildlife resources

VAHC:
- There are Vehicular Hunting Closures (Section 108, Wildlife Act) within the RMS area that do not show on this map and which may prohibit the use of a motorized vehicle for the purpose of hunting to protect and/or manage wildlife resources.
- Please refer to the Hunting Regulations for locations and further information on these closures.

Data Used for this map:
- Ungulate Winter Range
- Grasslands
- Sensitive Habitat Data
- TRIM roads
- NTS contours, water and annotation
- Caribou habitat
- Wetlands
- Parks
- AMAs
- Forest Cover
- Biogeoclimatic Zones
- Community Watersheds
- Native reserves
- Community Forest
- Private Land
- Avalanche tracks