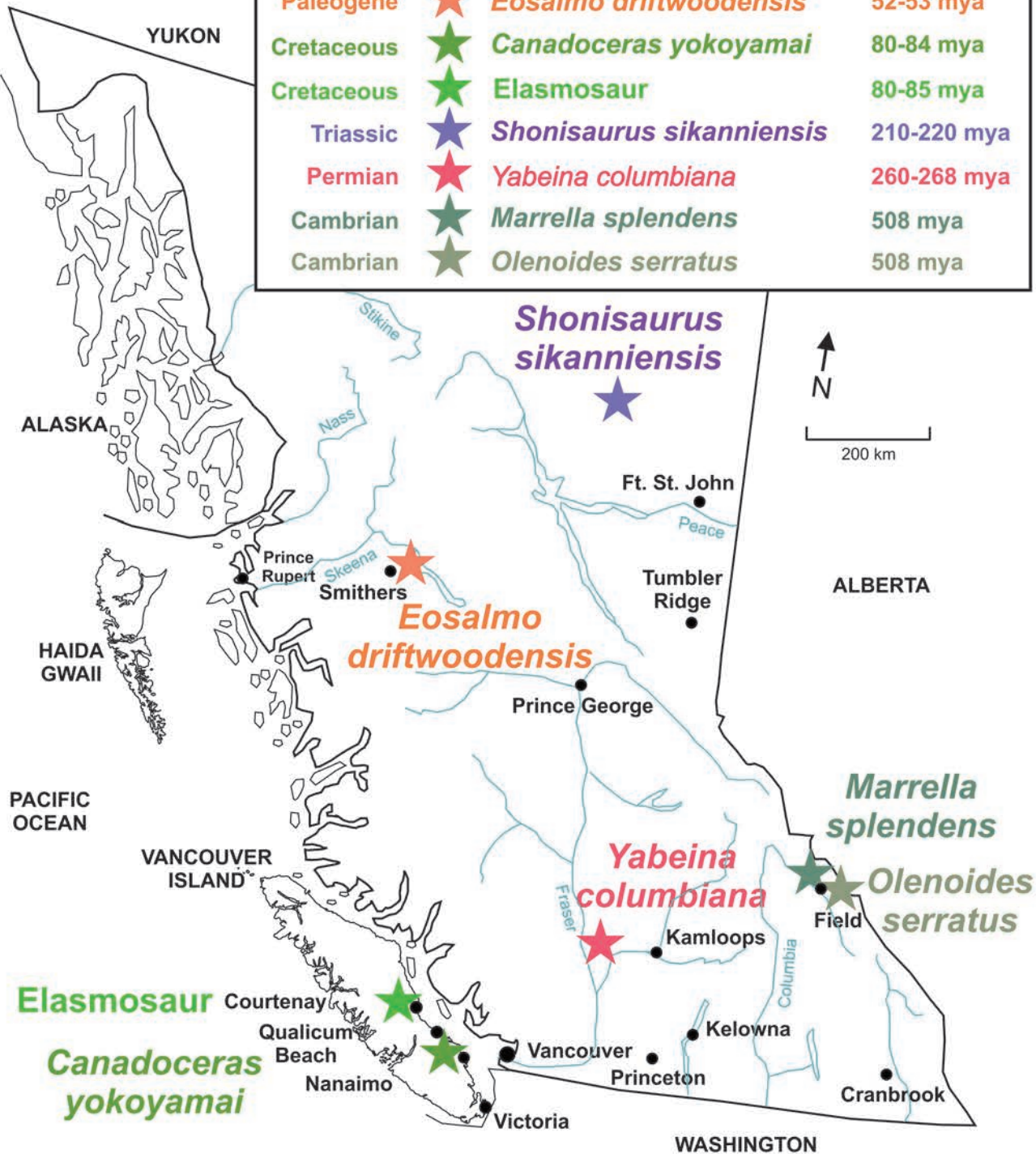


British Columbia Provincial Fossil Candidate

Period	Map Loc'n	Fossil	Fossil Age (million years ago)
Paleogene	★	<i>Eosalmo driftwoodensis</i>	52-53 mya
Cretaceous	★	<i>Canadoceras yokoyamai</i>	80-84 mya
Cretaceous	★	<i>Elasmosaur</i>	80-85 mya
Triassic	★	<i>Shonisaurus sikanniensis</i>	210-220 mya
Permian	★	<i>Yabeina columbiana</i>	260-268 mya
Cambrian	★	<i>Marrella splendens</i>	508 mya
Cambrian	★	<i>Olenoides serratus</i>	508 mya



Elasmosaur
Canadoceras yokoyamai

Shonisaurus sikanniensis

Eosalmo driftwoodensis

Yabeina columbiana

Marrella splendens

Olenoides serratus