

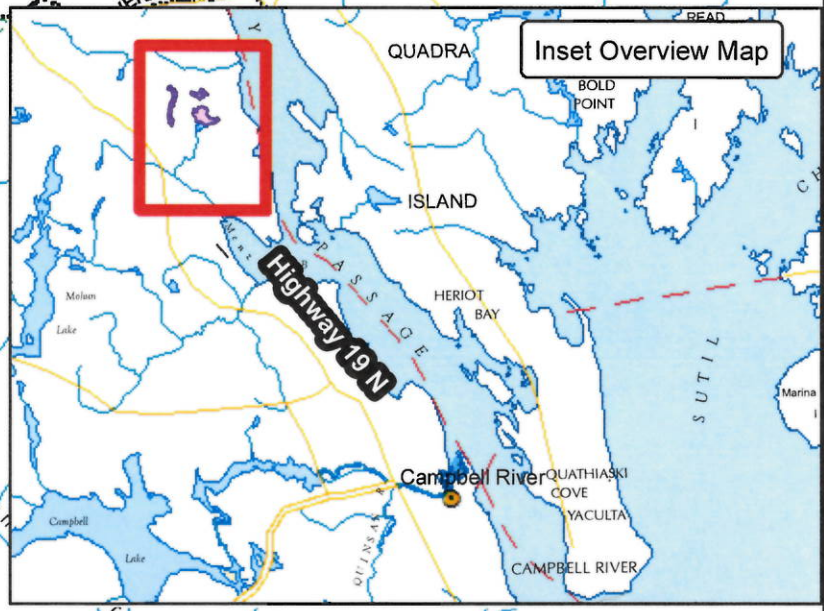
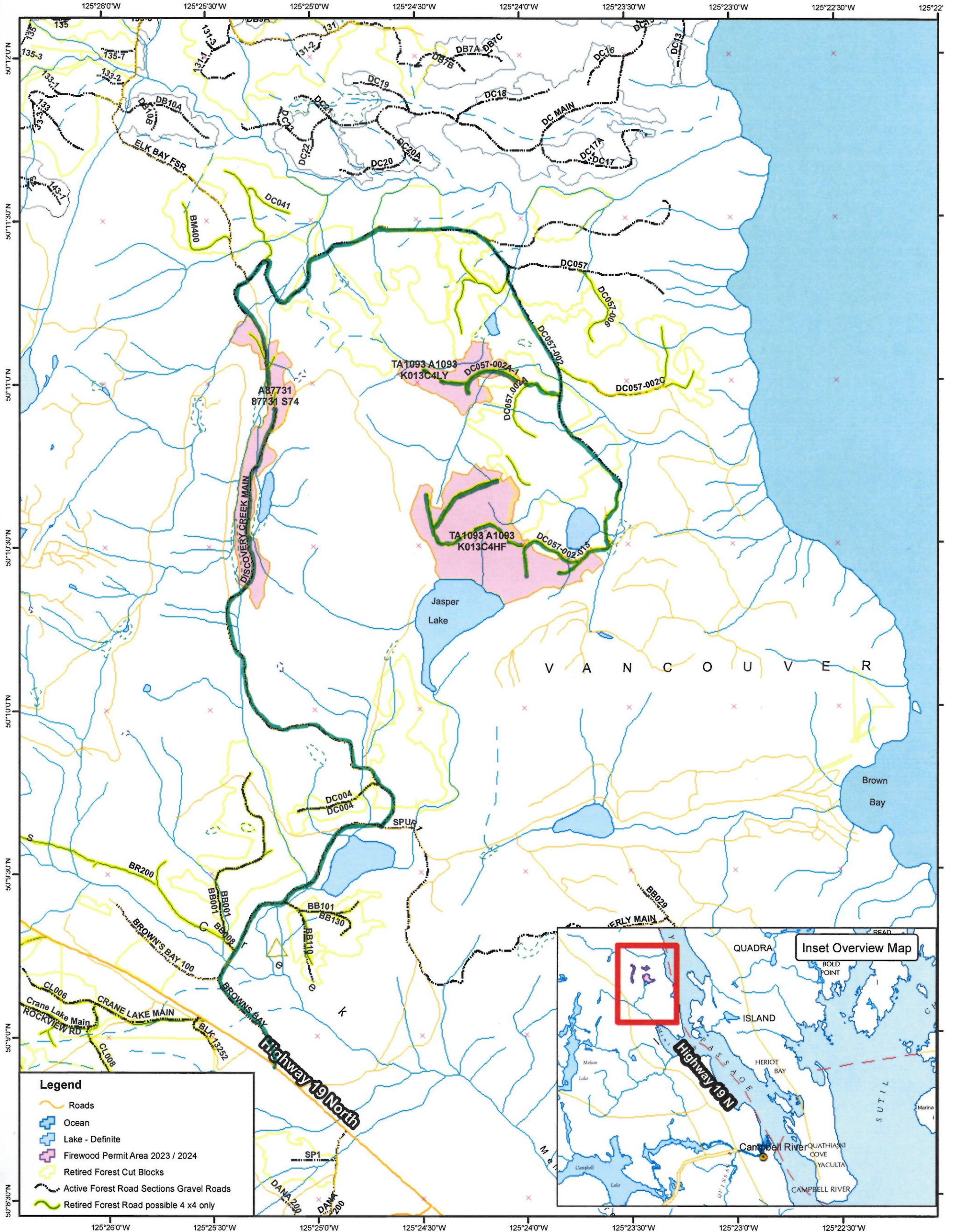
Coordinate System: NAD 1983 BC Environment Albers  
Projection: Albers



0 0.25 0.5 1 1.5 2

Kilometers

Copyright/Disclaimer:  
The material contained in this map site is owned by the Government of British Columbia and protected by copyright law. It may not be reproduced or redistributed without the prior written permission of the Province of British Columbia. To request permission to reproduce all or part of the material on this map please complete the Copyright Permission Request Form which can be accessed through the Copyright Information Page.  
CAUTION: This map is not designed to assist in navigation. This map may be generalized and may not reflect current conditions. Uncharted hazards may exist. DO NOT USE THESE MAPS FOR NAVIGATIONAL PURPOSES.



**Legend**

- Roads
- Ocean
- Lake - Definite
- Firewood Permit Area 2023 / 2024
- Retired Forest Cut Blocks
- Active Forest Road Sections Gravel Roads
- Retired Forest Road possible 4 x4 only