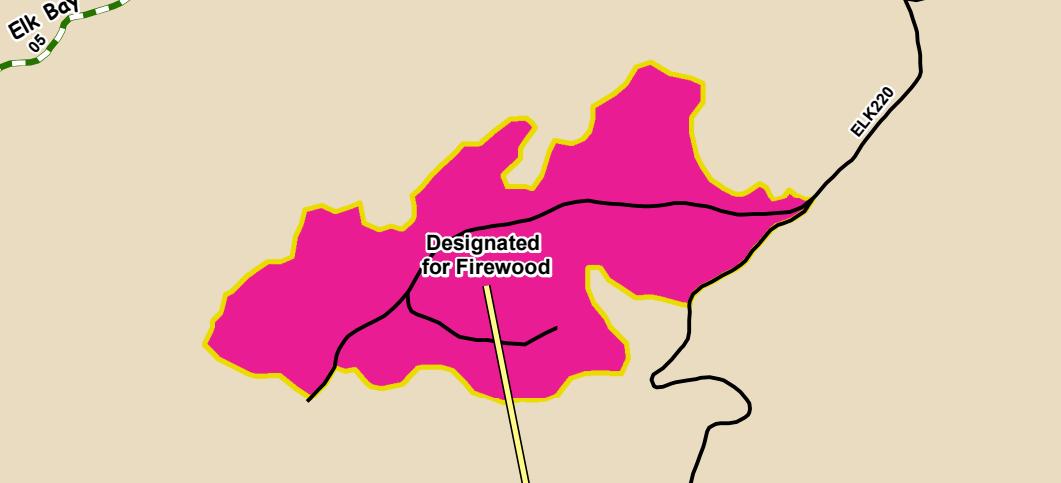
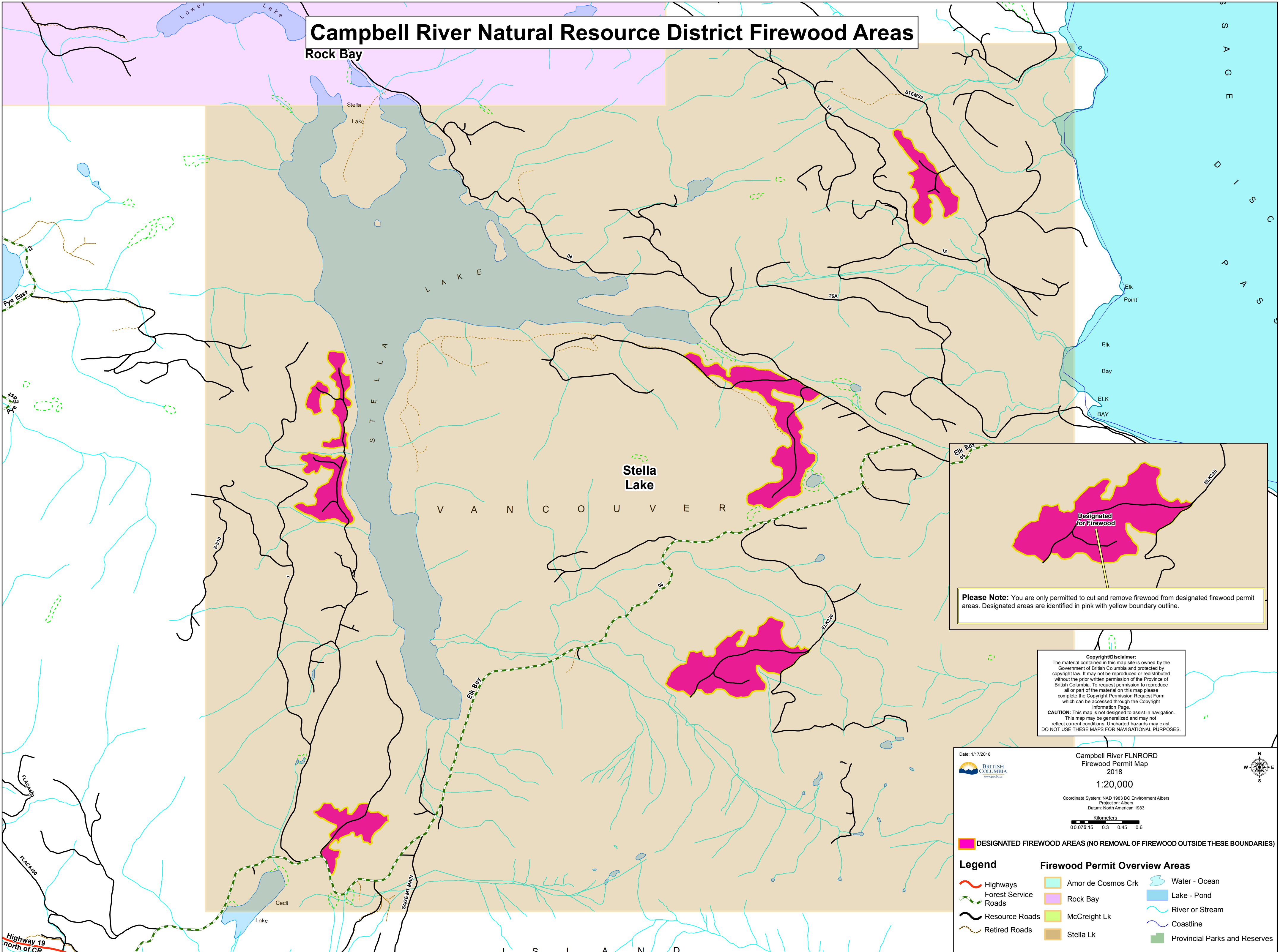


# Campbell River Natural Resource District Firewood Areas

Rock Bay



**Please Note:** You are only permitted to cut and remove firewood from designated firewood permit areas. Designated areas are identified in pink with yellow boundary outline.

**Copyright/Disclaimer:**  
 The material contained in this map site is owned by the Government of British Columbia and protected by copyright law. It may not be reproduced or redistributed without the prior written permission of the Province of British Columbia. To request permission to reproduce all or part of the material on this map please complete the Copyright Permission Request Form which can be accessed through the Copyright Information Page.  
**CAUTION:** This map is not designed to assist in navigation. This map may be generalized and may not reflect current conditions. Uncharted hazards may exist. DO NOT USE THESE MAPS FOR NAVIGATIONAL PURPOSES.

Date: 1/17/2018

BRITISH COLUMBIA  
www.gov.bc.ca

Campbell River FLNRORD  
Firewood Permit Map  
2018  
1:20,000

Coordinate System: NAD 1983 BC Environment Albers  
 Projection: Albers  
 Datum: North American 1983

Kilometers  
0 0.075 0.15 0.3 0.45 0.6

DESIGNATED FIREWOOD AREAS (NO REMOVAL OF FIREWOOD OUTSIDE THESE BOUNDARIES)

**Legend**

Highways	Amor de Cosmos Crk	Water - Ocean
Forest Service Roads	Rock Bay	Lake - Pond
Resource Roads	McCreight Lk	River or Stream
Retired Roads	Stella Lk	Coastline
		Provincial Parks and Reserves

Highway 19  
north of CR