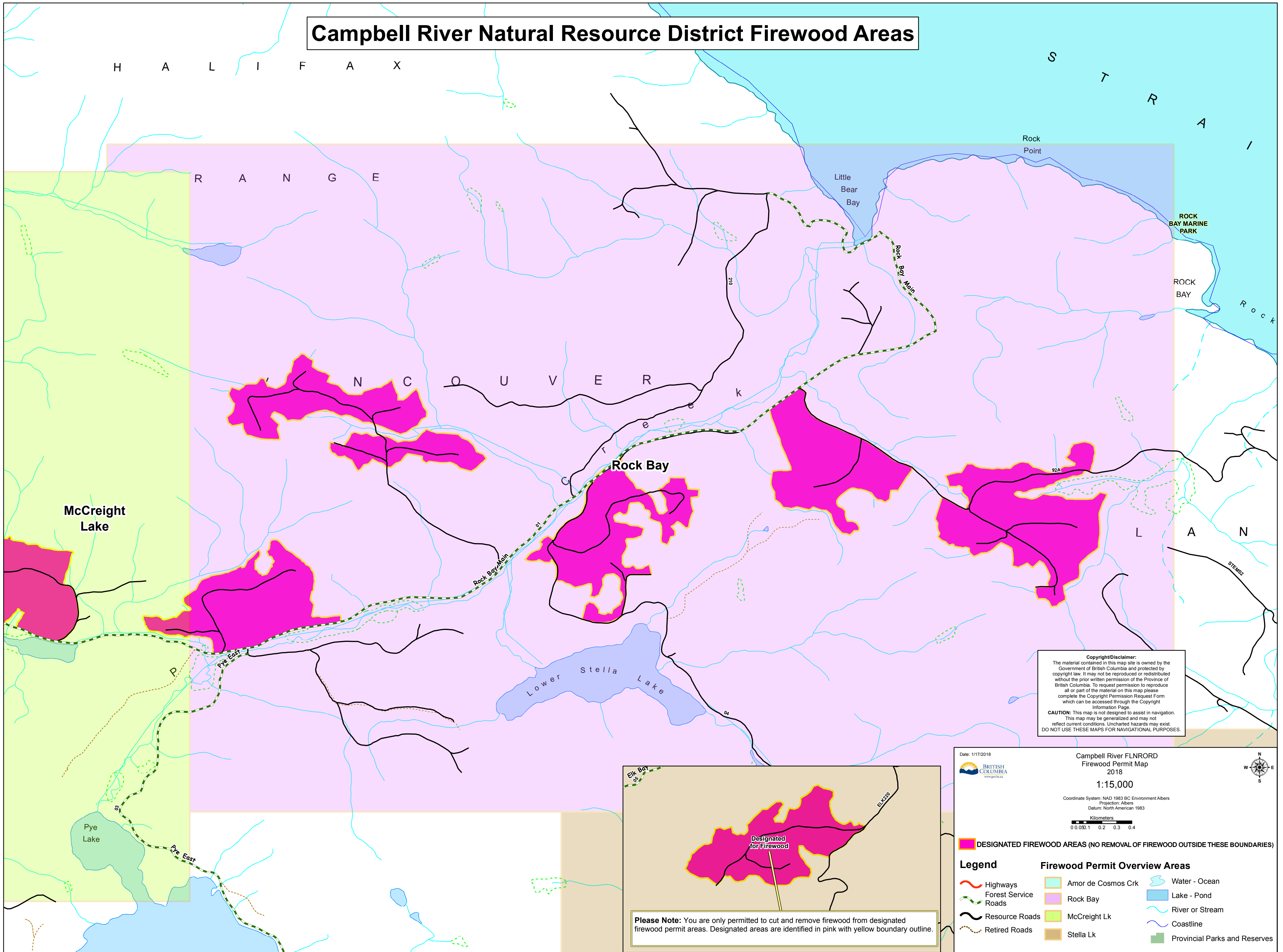


Campbell River Natural Resource District Firewood Areas



H A L I F A X

S T R A I

R A N G E

N C O U V E R

Rock Bay

McCreight Lake

Lower Stella Lake

L A N

Copyright/Disclaimer:
 The material contained in this map site is owned by the Government of British Columbia and protected by copyright law. It may not be reproduced or redistributed without the prior written permission of the Province of British Columbia. To request permission to reproduce all or part of the material on this map please complete the Copyright Permission Request Form which can be accessed through the Copyright Information Page.
CAUTION: This map is not designed to assist in navigation. This map may be generalized and may not reflect current conditions. Uncharted hazards may exist. DO NOT USE THESE MAPS FOR NAVIGATIONAL PURPOSES.

Date: 1/17/2018

BRITISH COLUMBIA
www.gov.bc.ca

**Campbell River FLNRORD
 Firewood Permit Map
 2018**

1:15,000

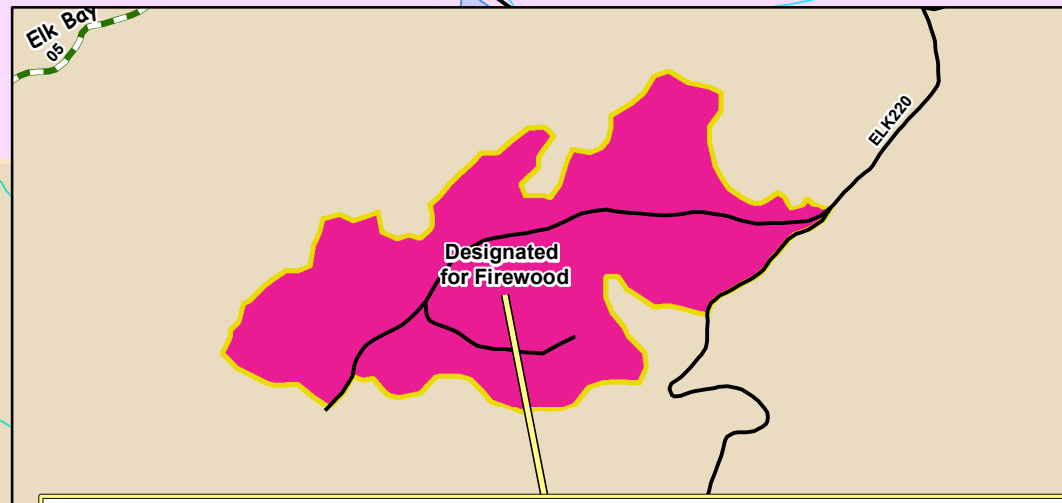
Coordinate System: NAD 1983 BC Environment Albers
 Projection: Albers
 Datum: North American 1983

Kilometers
 0.0 0.1 0.2 0.3 0.4

DESIGNATED FIREWOOD AREAS (NO REMOVAL OF FIREWOOD OUTSIDE THESE BOUNDARIES)

Legend

- Highways
- Forest Service Roads
- Resource Roads
- Retired Roads
- Amor de Cosmos Crk
- Rock Bay
- McCreight Lk
- Stella Lk
- Water - Ocean
- Lake - Pond
- River or Stream
- Coastline
- Provincial Parks and Reserves



Please Note: You are only permitted to cut and remove firewood from designated firewood permit areas. Designated areas are identified in pink with yellow boundary outline.