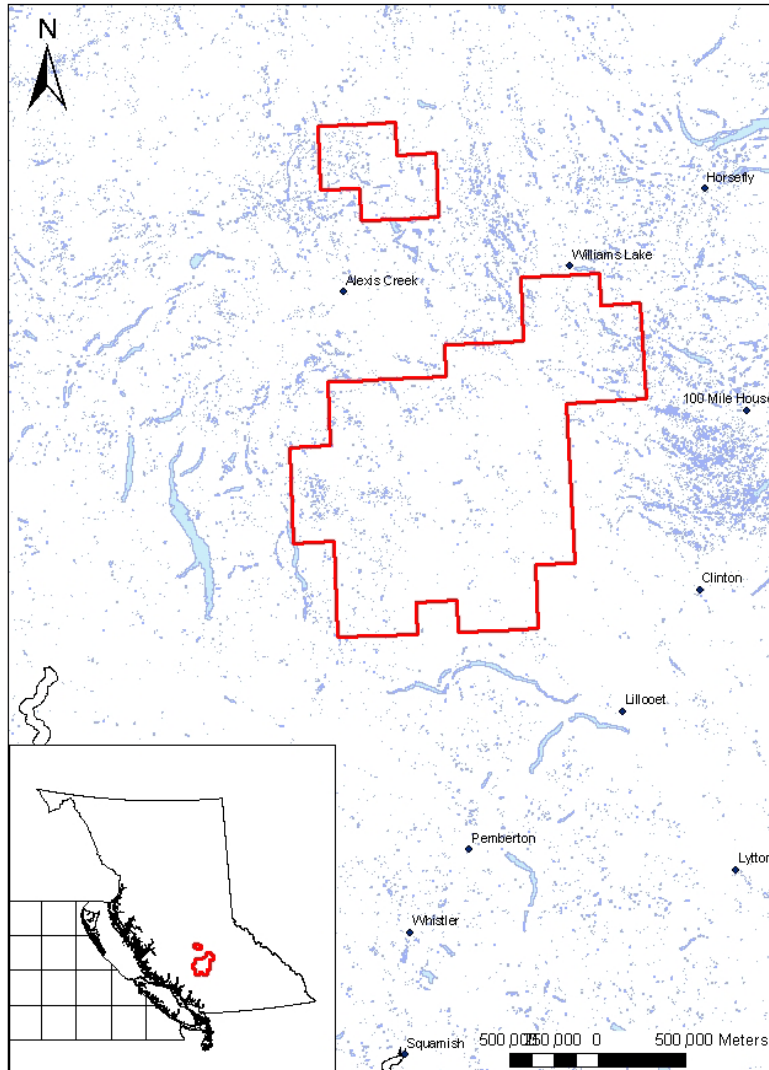


Williams Lake Forest District  
 Archaeological Overview Assessment of a Portion of the Williams Lake Forest District

Study Area Map:



Study Date: 1998

Study Area: Original AOA Potential Categories:

Known Archaeological Sites Captured within Potential Categories:

Potential Category	Number of Sites Captured	Percentage of Sites Captured	Percentage of Study Area Captured	Kvamme's Gain
4+ (High)	129	48.13	8.01	0.83
3 (Moderate-High)	95	35.45	19.14	0.46
2 (Moderate)	34	12.69	29.32	-1.31
1 (Low)	10	3.73	43.53	-10.67

RAAD Study Modifications:

Original AOA Potential Categories	RAAD AOA Potential Categories
High	High
Moderate High	Moderate
Moderate	Moderate
Low	Removed

Conforms to Provincial AOA Standards:

- 1996 Standards
- 2008/9 Standards N/A

This information is available:

- In RAAD
- As a data request

[Link to AOA Report](#)