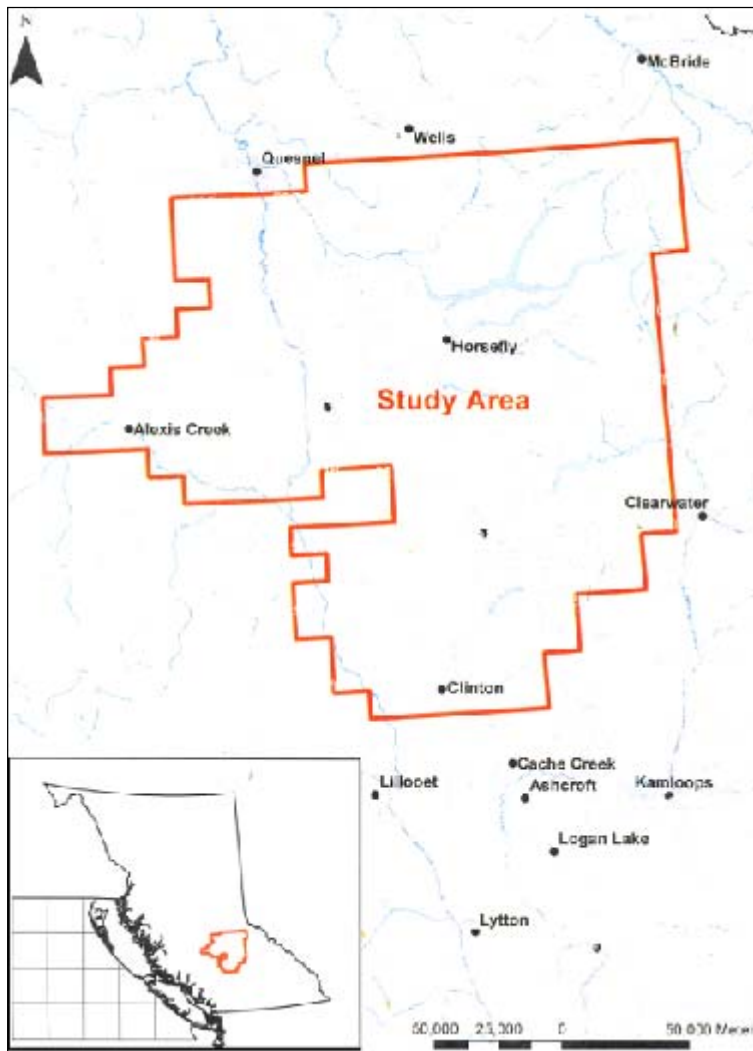


Study Area Map:



Study Date: 1998

Study Area: Eastern portion of the Williams Lake Forest District

Original AOA Potential Categories: High, High Moderate, Moderate and Low

Known Archaeological Sites Captured within Potential Categories:

Potential	No. of Sites	% of Sites	Size (ha)	Area as %	Kvamme's Gain
High	648	84.5	1,074,371	29.4	0.65
High-Moderate	63	8.2	620,597	17.0	-1.07
Moderate	18	2.3	419,018	11.5	-3.89
Low	38	5.0	1,537,043	42.1	-7.50
Total	767	100	3,651,028	100	

RAAD Study Modifications:

Original AOA Potential Categories	RAAD AOA Potential Categories
High	High
High-Moderate	Moderate
Moderate	Moderate
Low	Removed

Conforms to Provincial AOA Standards:

1996 Standards
 2008/9 Standards N/A

This information is available:

In RAAD
 As a data request

[Link to AOA Report](#)