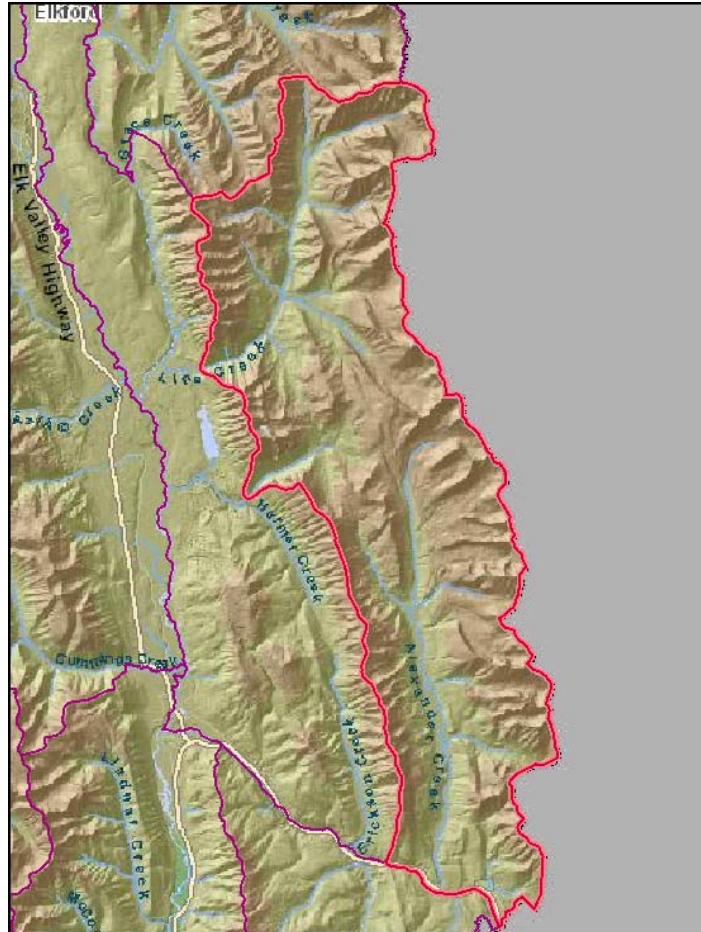


RMFDI (Landscape Unit C20, Rocky Mountain Forest District) Metadata

Study Area Map:



Study Date: 2008.

Study Area: LU C20 encompasses the drainage basins of Alexander and Line creeks in the southern Canadian Rocky Mountains

Original AOA Potential Categories: High, Medium

A total of 106 landform-based polygons within the Landscape Unit C20 were delineated during the project.

30 of the polygons were assessed as having High Potential

76 of the polygons were assessed as having Moderate Potential

Recommendations from the AOA include:

- The archaeological potential polygons can be used to identify areas where more detailed investigations via preliminary archaeological field reconnaissance (PFR) or archaeological impact assessments (AIAs) should be undertaken;
- Of equal importance to the ground truthing is the addition to this process of what has been termed a “management database” which records information about the polygons that has direct bearing on potential land uses with regard to conservation of archaeological values.

Conforms to Provincial AOA Standards:

1996 Standards
2008/9 Standards N/A

The spatial information is available:

In RAAD
As a data request