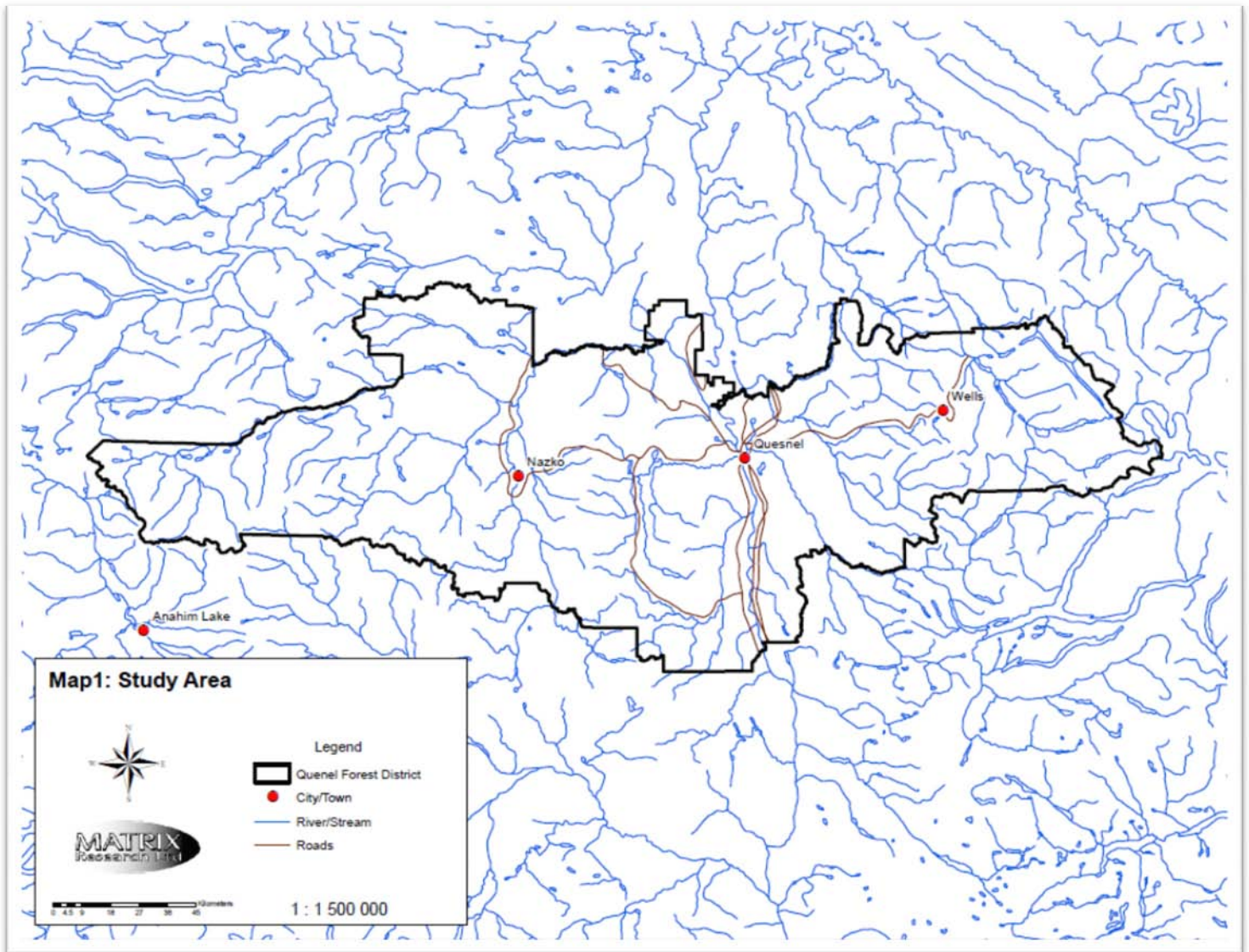


Quesnel Forest District AOA Metadata

Study Area Map:



Study Date: 2008

Study Area: Quesnel Forest District

Original AOA Potential Categories: Significant

Known Archaeological Sites Captured within Potential Categories:

Forest District	Archaeological Potential Class	Known Site Locations	Area of the Forest District (ha)	Kvamme Gain
Quesnel	High	1192 (89.8%)	335,481	.82

RAAD Study Modifications:

Original AOA Potential Categories	RAAD AOA Potential Categories
High	High

Conforms to Provincial AOA Standards:

1996 Standards N/A
 2008/9 Standards

This information is available:

In RAAD
 As a data request