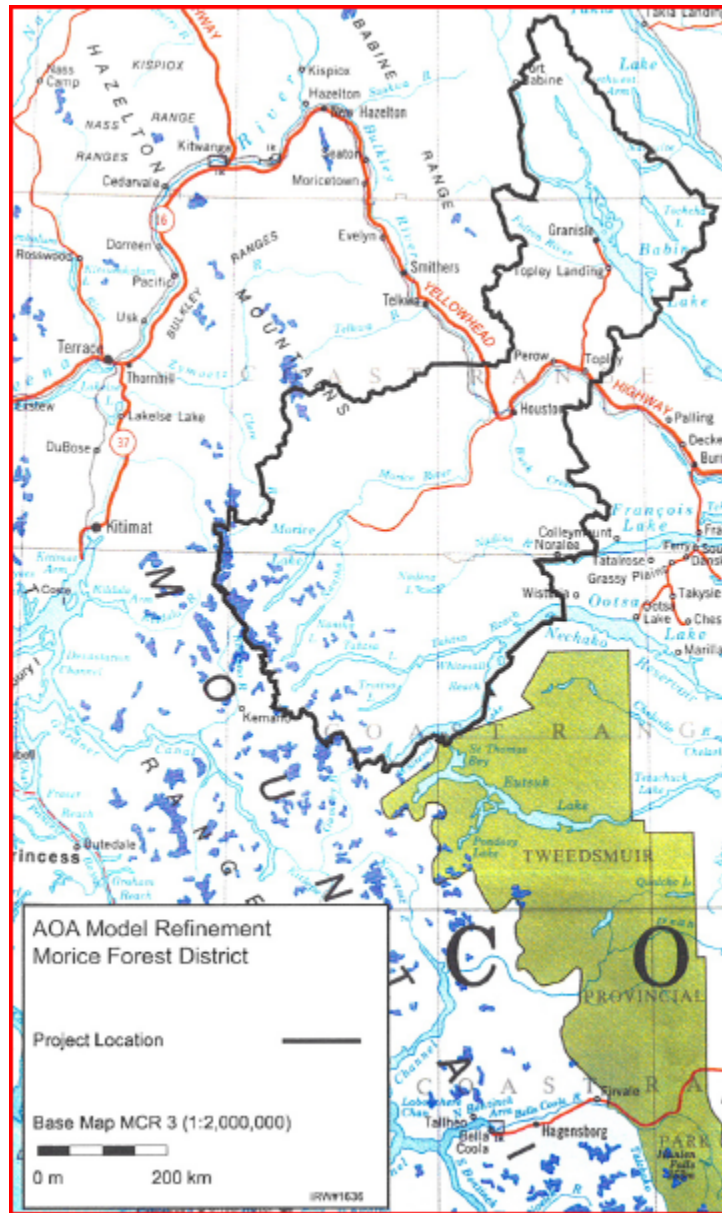


Nadina Forest District
Morice Forest District (TSA) AOA Metadata

Study Area Map:



Study Date: 1998–2007

Study Area: Morice TSA within the Nadina Forest District

Original AOA Potential Categories: High, Moderate and Low

Known Archaeological Sites (%) Captured within Potential Categories: Not Found

RAAD Study Modifications:

Original AOA Potential Categories	RAAD AOA Potential Categories
High	High
Moderate	Moderate
Low	Removed

Conforms to Provincial AOA Standards:

- 1996 Standards
- 2008/9 Standards N/A

This information is available:

- In RAAD
- As a data request

Links to AOA Reports:

Archaeological Overview Assessment, Morice Forest District: Archaeological Potential Model Revisions (2002)

Archaeological Inventory and Overview Assessment Refinement, Ministry of Forests, Morice Forest District, Houston, British Columbia (1998)

Morice Timber Supply Area: Archaeological Overview Assessment (2007)