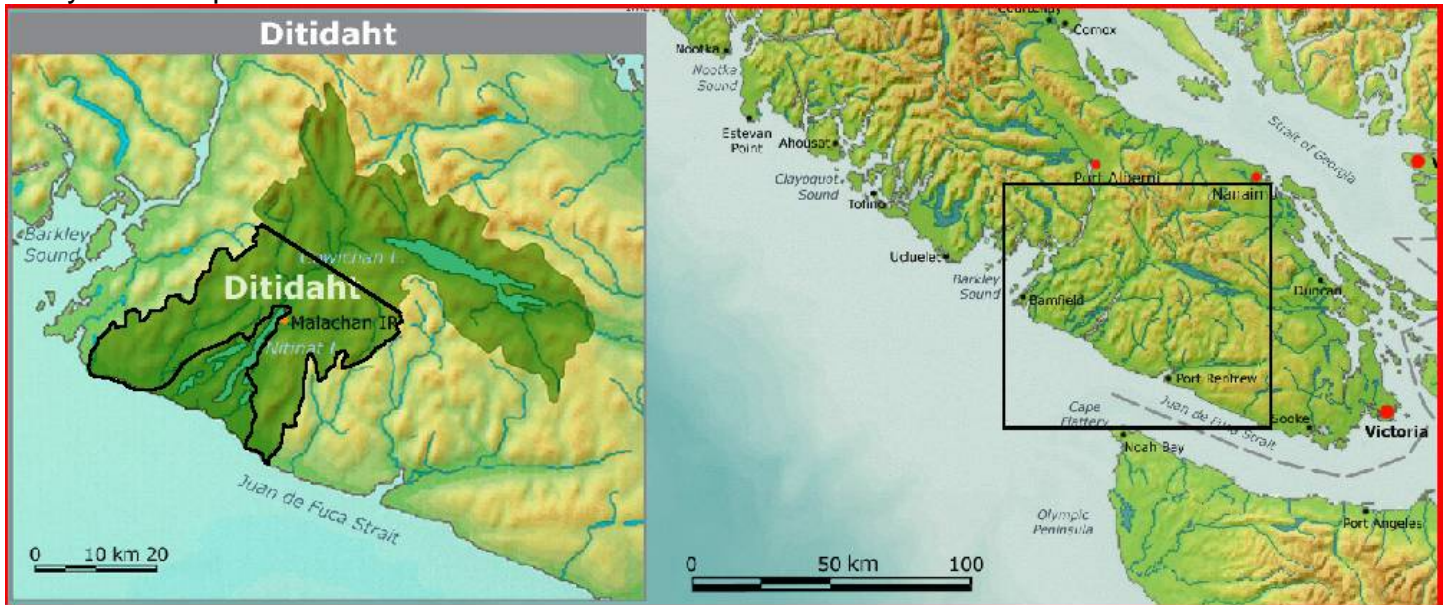


Ditidaht Traditional Territory AOA Metadata

Study Area Map:



Study Date: 2001

Study Area: Ditidaht Traditional Territory west of the E&N land grant

Original AOA Potential Categories: High, Moderate -High, Moderate and Low

Known Archaeological Sites (%) Captured within Potential Categories:

Not summarised. See report pages 30 – 33,

RAAD Study Modifications:

The RAAD layer does not contain CMT potential

Original AOA Potential Categories	RAAD AOA Potential Categories
High	High
Moderate to High	Moderate
Moderate	Moderate
Low	Removed

Conforms to Provincial AOA Standards:

1996 Standards
2008/9 Standards N/A

This information is available:

In RAAD
As a data request

[Link to AOA Report](#)