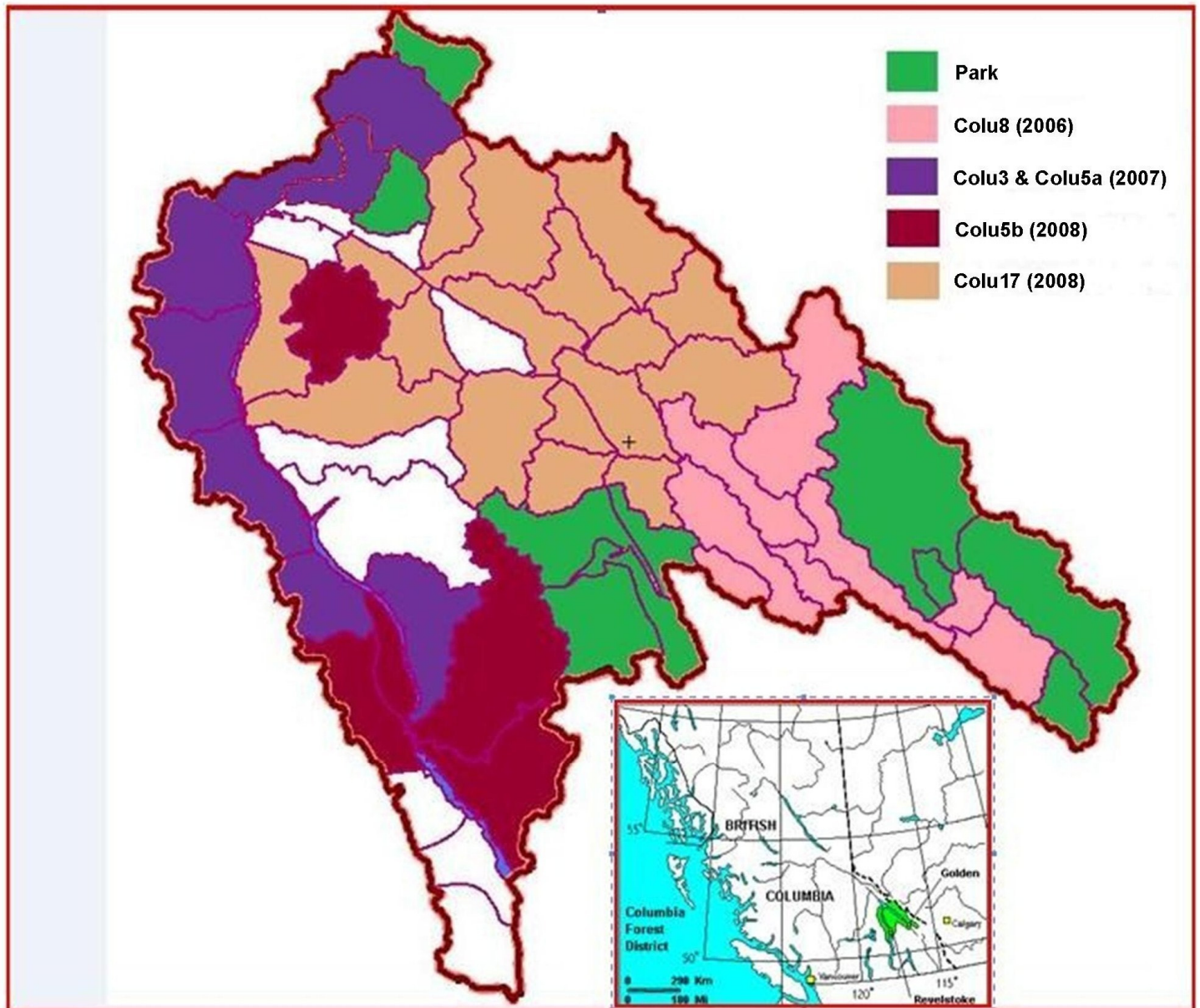


Columbia Forest District AOA Metadata  
Study Area Map:



**Study Date:** 2006 - 2008

**Study Area:** Compilation of Landscape Unit Level AOA studies. Note that the Colu3 (2007) study area overlaps with the Colu5a (2007) study area, therefore only the Colu5a study appears on RAAD.

**Original AOA Potential Categories:** High, Moderate

**Known Archaeological Sites (%) Captured within Potential Categories:**

No specific capture rates noted in the report.

**RAAD Study Modifications:**

Original AOA Potential Categories	RAAD AOA Potential Categories
High	High
Moderate	Moderate

**Conforms to Provincial AOA Standards:**

1996 Standards   
2008/9 Standards N/A

**This information is available:**

In RAAD   
As a data request