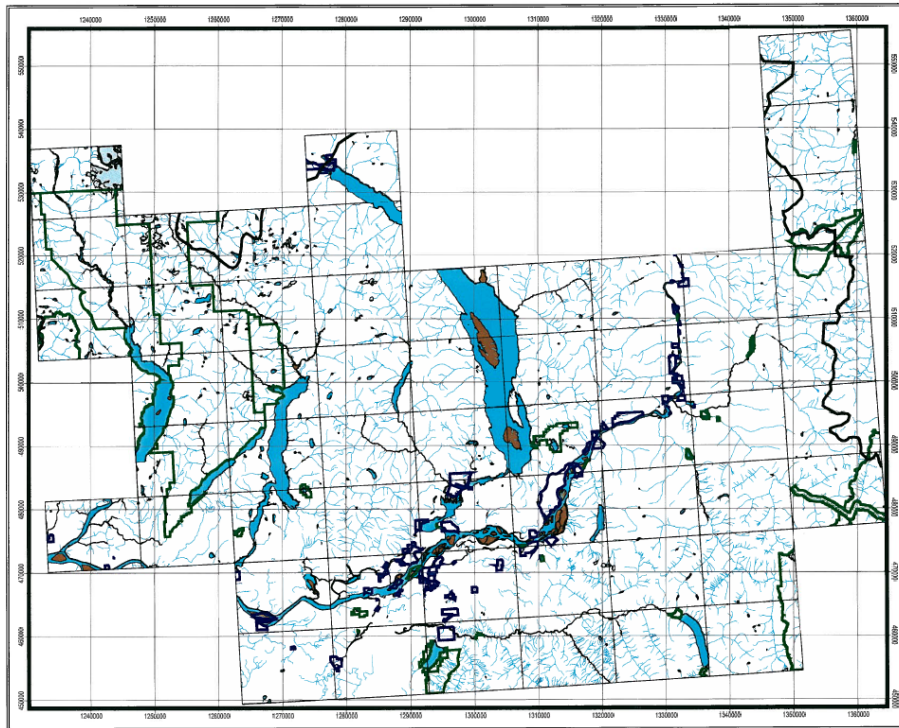


Chilliwack Forest District AOA Metadata - Southern Portion

Study Area Map:



Study Date: 1999

Study Area: Chilliwack coverage consists of two studies, Archaeological Review and Management Plan for Southern Chilliwack Forest District (1999) and Archaeological Overview Assessment of Nlaka'pamux Nation Traditional Lands in the Northern Chilliwack Forest District (1999). Combined study area is the Chilliwack Forest District.

Original AOA Potential Categories: Class 1 (High), Class 2 (Moderate) and Class 3 (Low)

Known Archaeological Sites (%) Captured within Potential Categories:

No specific capture rates noted in the report

Archaeological Land Class	Areas (ha.)	% of Land
	Revised Model	Revised Model
Class I	110,679	13.5%
Class II	26,448	3.2%
Class I or II	137,127	16.7%
Class III	684,634	83.3%

RAAD Study Modifications:

Original AOA Potential Categories	RAAD AOA Potential Categories
Class I	High
Class II	Moderate
Class III	Removed

Conforms to Provincial AOA Standards:

- 1996 Standards
- 2008/9 Standards N/A

This information is available:

- In RAAD
- As a data request

[Link to AOA Report](#)