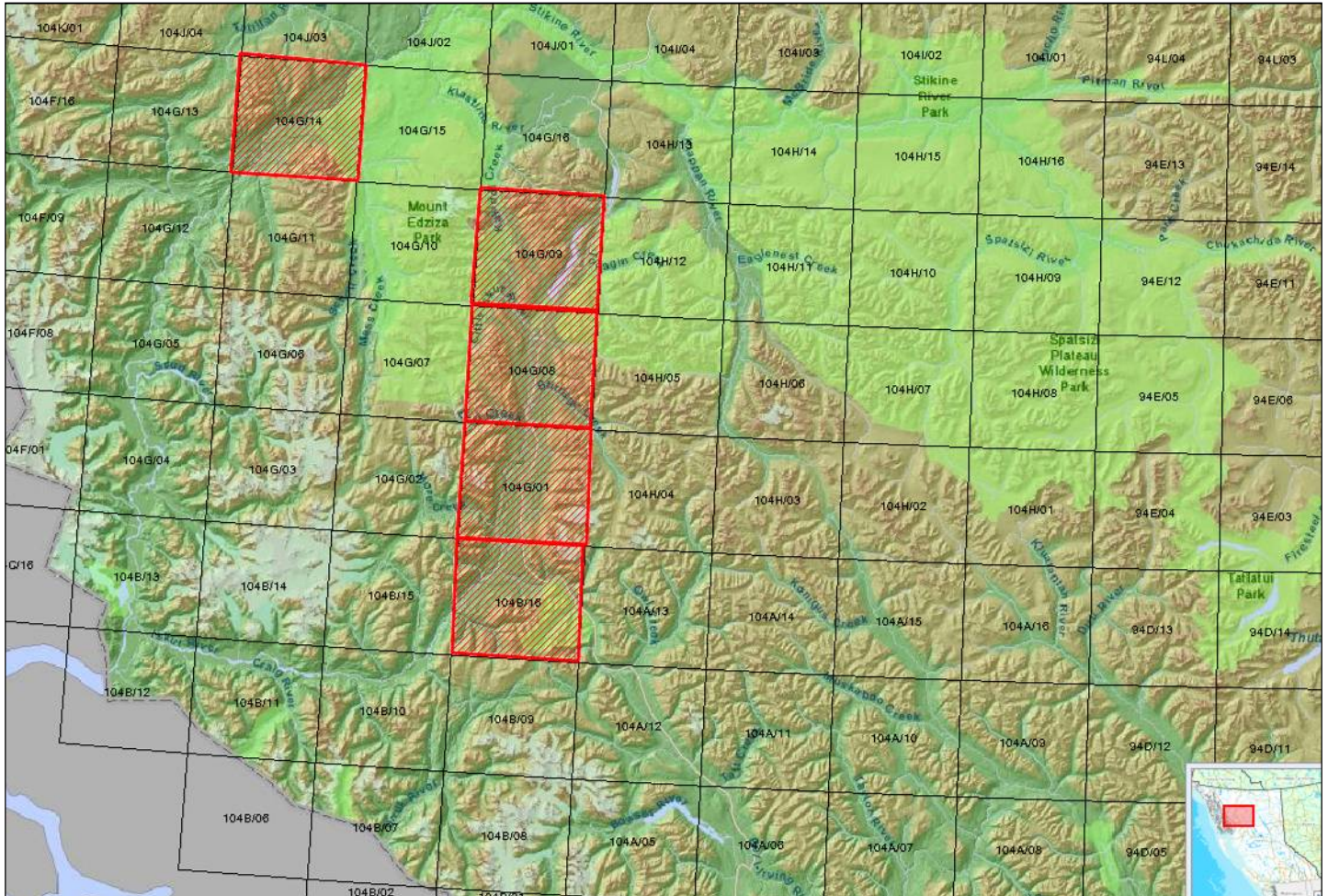


Skeena/Stikine Forest District
Cassiar-Iskut-Stikine LRMP AOA

Study Area Map:



Study Date: 1998

Study Area: Five selected 1:50,000 NTS mapsheets within the Cassiar Forest District

Original AOA Potential Categories: High, High to Moderate, Moderate and Low

Known Archaeological Sites (%) Captured within Potential Categories:

Overall Potential	Site n	%	Kmgrid n	%
1 (low)	4	2.72	2194	38.98
2 (moderate)	18	12.24	1958	34.79
3 (moderately to high)	60	40.82	1144	20.33
4+ (high)	65	44.22	332	5.90
Total	147		5628	

RAAD Study Modifications:

Original AOA Potential Categories	RAAD AOA Potential Categories
4 (High)	High
3 (Moderate-High)	Moderate
2 (Moderate)	Moderate
1 (Low)*	Removed

Conforms to Provincial AOA Standards:

- 1996 Standards
- 2008/9 Standards N/A

This information is available:

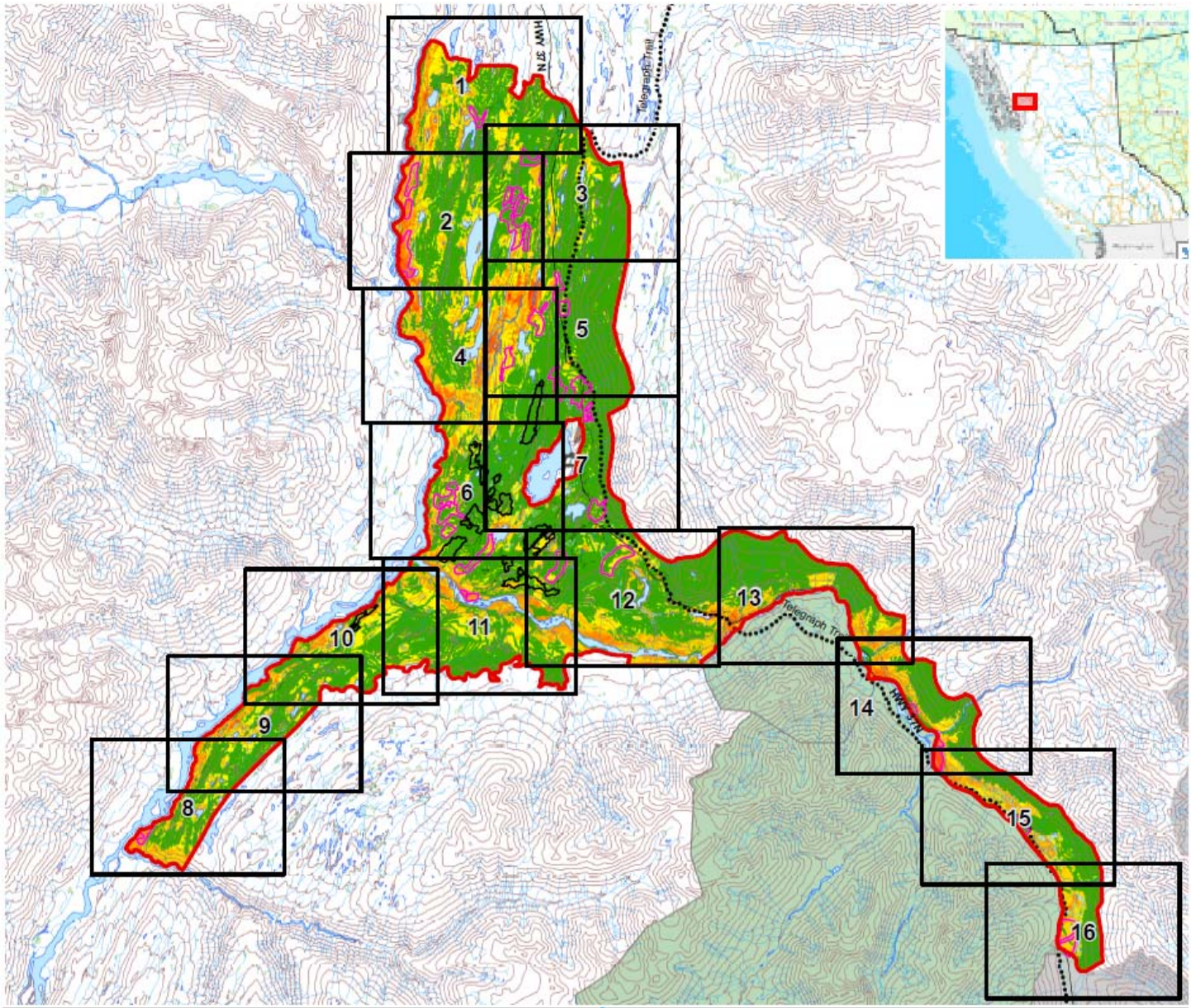
- In RAAD
- As a data request

PDFs of the mapsheets are available:

- [104B/16](#)
- [104G/01](#)
- [104G/08](#)
- [104G/09](#)
- [104G/14](#)

[Link to AOA Report](#)

**Skeena/Stikine Forest District
AOA of the Cassiar Forest Corporation's Forest Development Unit**



Study Date: 2010

Study Area: 23,000 Ha. at the confluence of Iskut and Ningunsaw Rivers

Original AOA Potential Categories: High, High-Moderate, Moderate and Low

RAAD Study Modifications:

This study is not available in RAAD

Conforms to Provincial AOA Standards:

1996 Standards	N/A
2008/9 Standards	N/A

This information is available:

In RAAD	N/A
As a data request	<input checked="" type="checkbox"/>

PDFs of the mapsheets are available:

- [Cassiar Forest Corp AOA 1](#)
- [Cassiar Forest Corp AOA 2](#)
- [Cassiar Forest Corp AOA 3](#)
- [Cassiar Forest Corp AOA 4](#)

[Link to AOA Report](#)