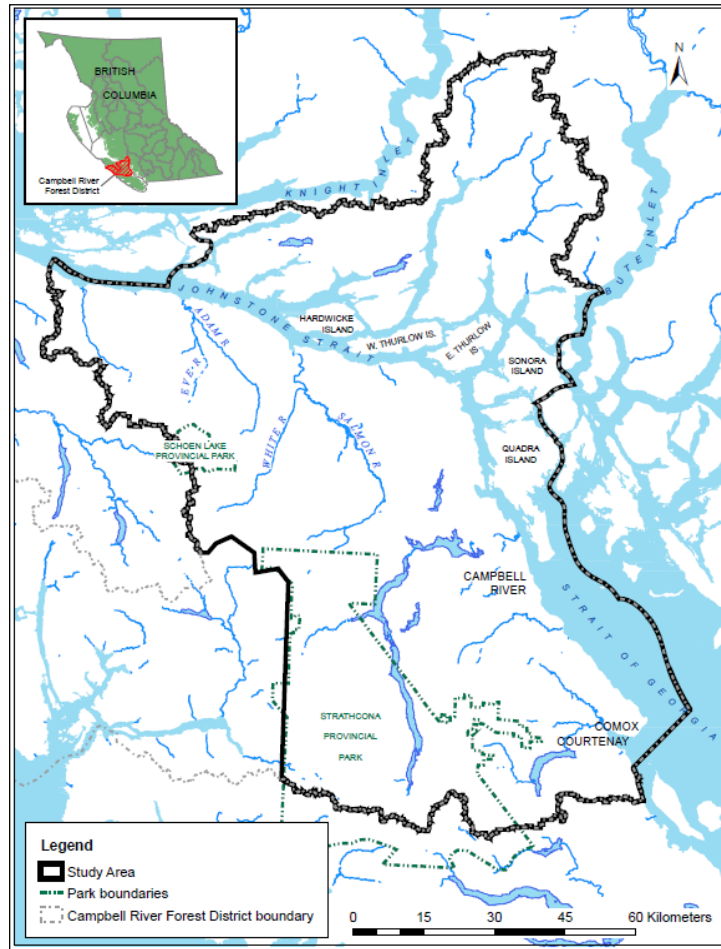


Campbell River Forest District AOA Metadata

Study Area Map:



Study Date: 2007

Study Area: Eastern portions of the Campbell River Forest District

Original AOA Potential Categories: High, Medium and Low

Known Archaeological Sites (%) Captured within Potential Categories:

Model	N=sites	% land H	% land M	% sites H	% sites M	Kv H	Kv M	Kv combined
Fish Trap	19	0.19	0.44	26	32	0.99	0.98	0.99
Midden	259	0.20	2.3	27	63	0.99	0.96	0.97
Petroglyph	25	0.03	0.3	12	40	0.99	0.99	0.99
Pictograph	31	0.01	0.16	16	45	1.0	1.0	1.0
Rock shelter	11	0.09	(0.7)	27	(55)	1.0	(1.0)	1.0
Trench Embankment Refuge	7	0.008	0.04	29	14	1.0	1.0	1.0

RAAD Study Modifications:

The RAAD layer does not contain CMT potential

Original AOA Potential Categories	RAAD AOA Potential Categories
High	High
Medium	Moderate
Low	Removed

Conforms to Provincial AOA Standards:

1996 Standards
 2008/9 Standards N/A

This information is available:

In RAAD
 As a data request

[Link to AOA Report](#)