

# **Big White Ecological Reserve- Proposed Boundary Adjustment**

Big White Ecological Reserve (951 hectares) was established in 1972 and is currently listed and described in Schedule B of the *Protected Areas of British Columbia Act*. The southern boundary of the ecological reserve borders provincial Crown land that is designated as a Controlled Recreation Area as part of the Big White Ski Resort, founded in 1963.

*Big White Ecological Reserve protects a small representation of old growth forest comprised of Engelmann spruce and sub-alpine fir, as well as being the only location that is protected in the Okanagan Highlands that contains a true alpine ecosystem.*



When the ecological reserve was established, an error was made that resulted in the inclusion of a small area of ski resort facilities. This error was discovered when more accurate digital mapping of the boundaries of the ecological reserve and Big White Ski Resort's Controlled Recreation Area was completed.

BC Parks is currently working with the Mountain Resorts Branch (Ministry of Forests, Lands, Natural Resource Operations and Rural Development) and Big White Ski Resort to rectify the boundary error. The current proposal suggests an adjustment of the boundary of the ecological reserve which would result in 3.5 hectares (approximately) being removed from the ecological reserve.

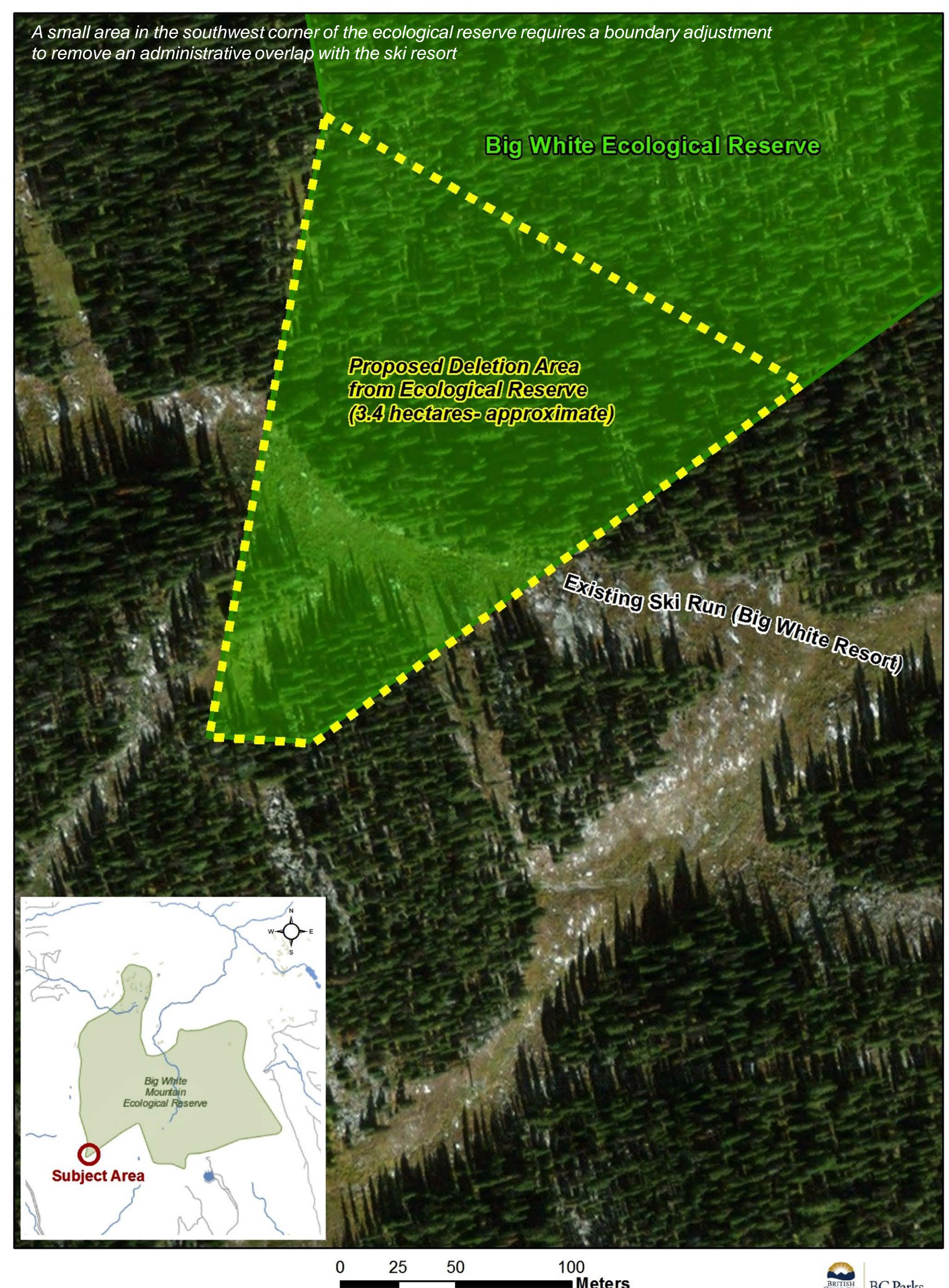
Lands can only be removed from an ecological reserve named and described in a schedule to the Act by an Act of the legislature. Proposals to remove lands from provincial protected areas are reviewed pursuant to the Cabinet-approved Provincial Protected Area Boundary Adjustment Policy, Process and Guidelines.

Requests to amend protected area boundaries fall within one of three categories:

1. "Administrative housekeeping" adjustments undertaken where there have been errors in the initial legal description of the boundary, or an area was captured that clearly was not intended to be captured at the designation stage;
2. Adjustments intended to alleviate a human health and safety concern; and
3. Adjustments where a proponent (private or public) is interested in a boundary adjustment to allow for a development or activity not allowed by authorization under protected areas legislation.

The proposed boundary amendment to Big White Ecological Reserve is considered to be a Category 1 (Administrative Housekeeping).

At this time, the proposal to amend the boundary of Big White Ecological Reserve has not received government approval. BC Parks intends to work with the Mountain Resorts Branch to inform the public, stakeholders and Indigenous governments about the proposed boundary change through the consultation process being undertaken for the updated Master Development Agreement for Big White Ski Resort.



For further information regarding this boundary adjustment proposal please contact:

Keith J. Baric

Planning Section Head (BC Parks)

Phone: 250-490-8260 (Penticton office)

Email: Keith.Baric@gov.bc.ca