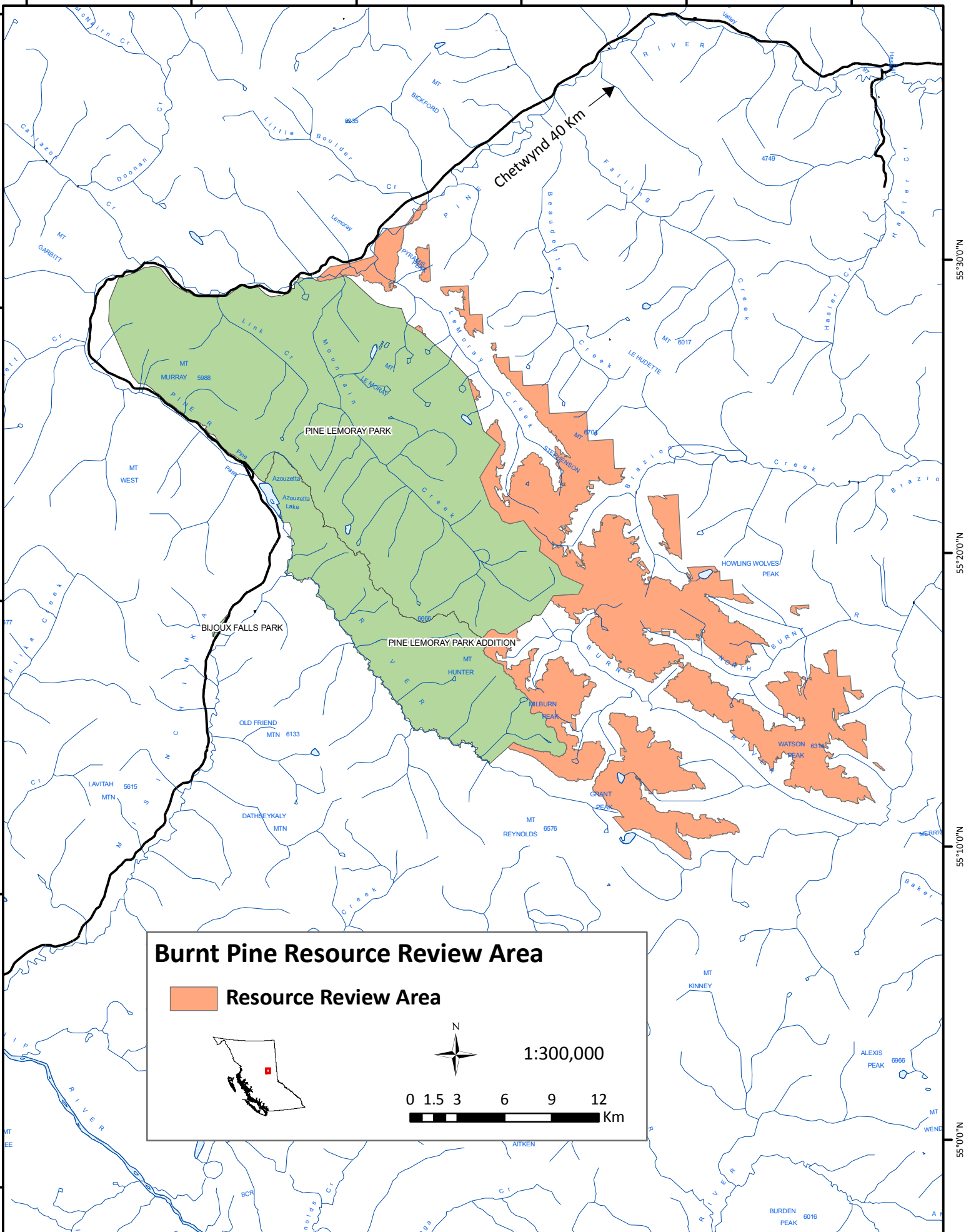




122°50'0"W 122°40'0"W 122°30'0"W 122°20'0"W 122°10'0"W 122°0'0"W



55°30'0"N
55°20'0"N
55°10'0"N
55°0'0"N

Burnt Pine Resource Review Area

 **Resource Review Area**



N

1:300,000

0 1.5 3 6 9 12 Km