

Petrophysical Analysis Displays
March 12, 2007

Nechako Basin, British Columbia
Routine Core and Petrophysical Displays

Figure 1: Multi-Well Core Porosity vs. Kmax Permeability

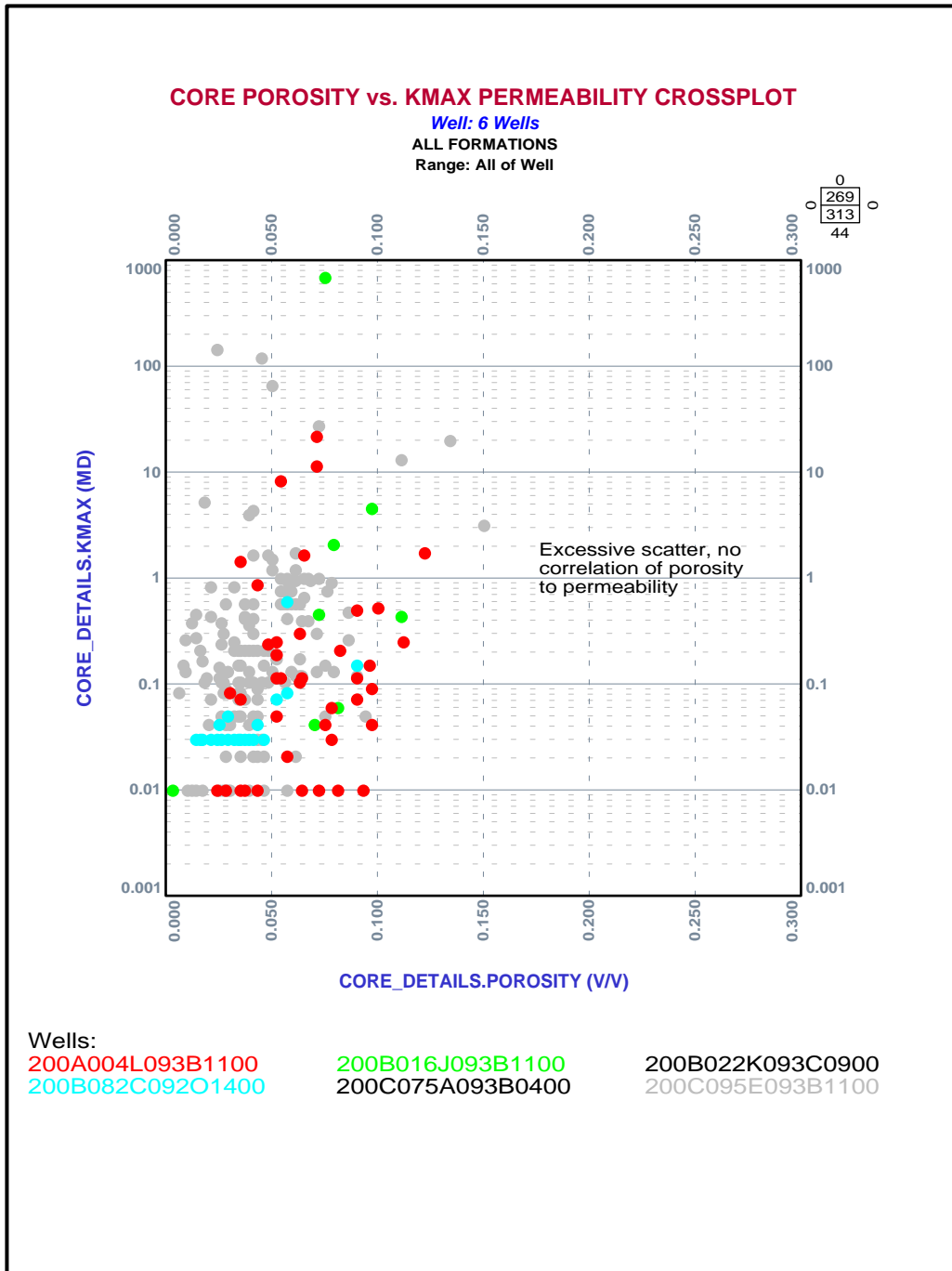
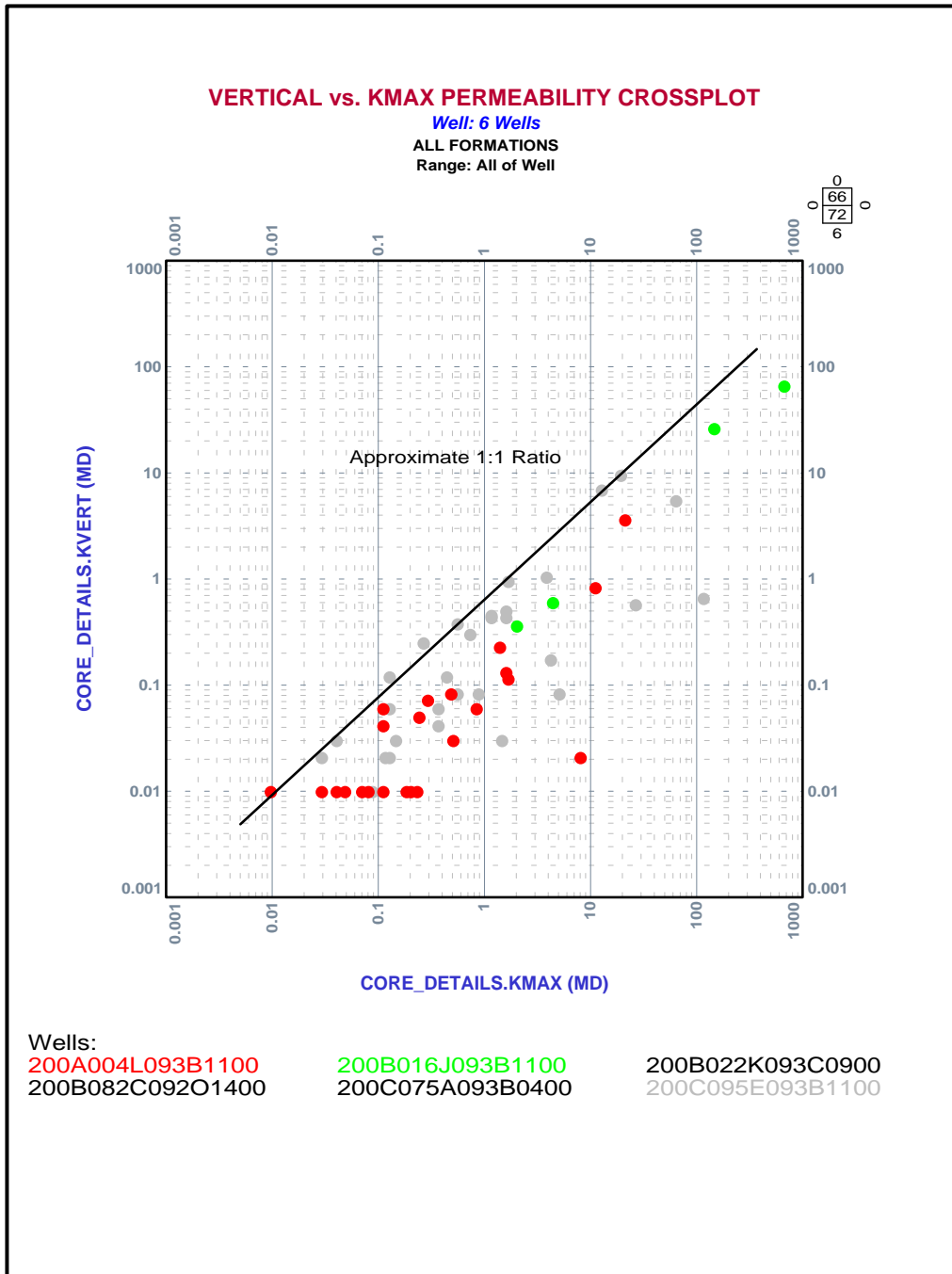
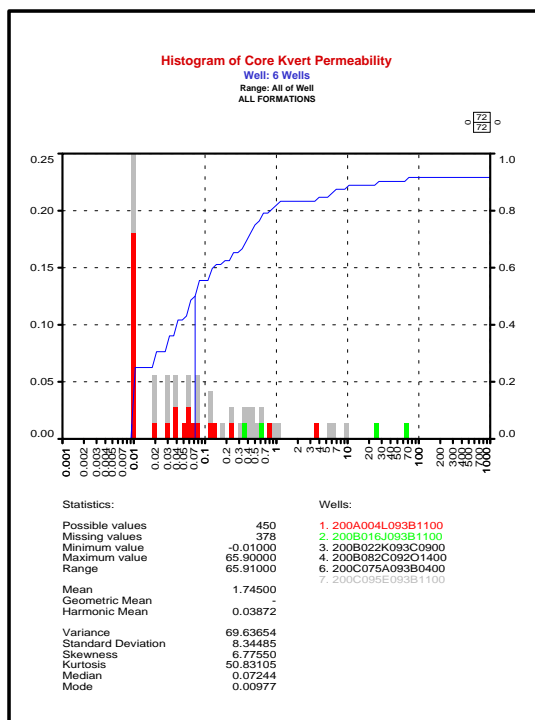
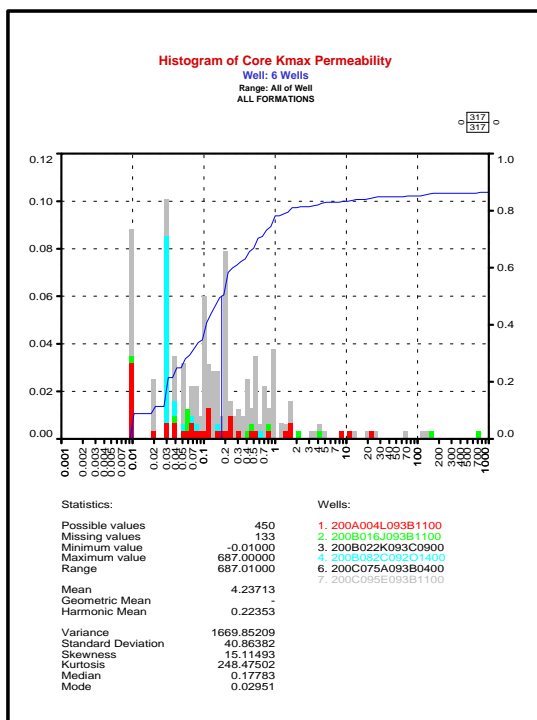
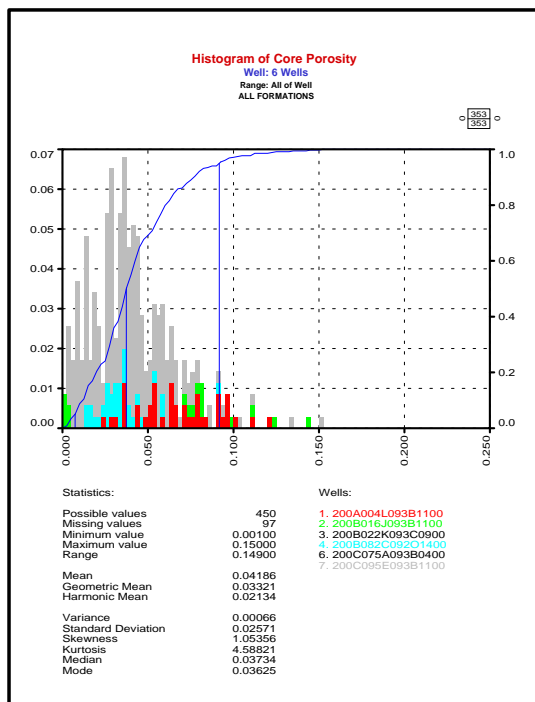
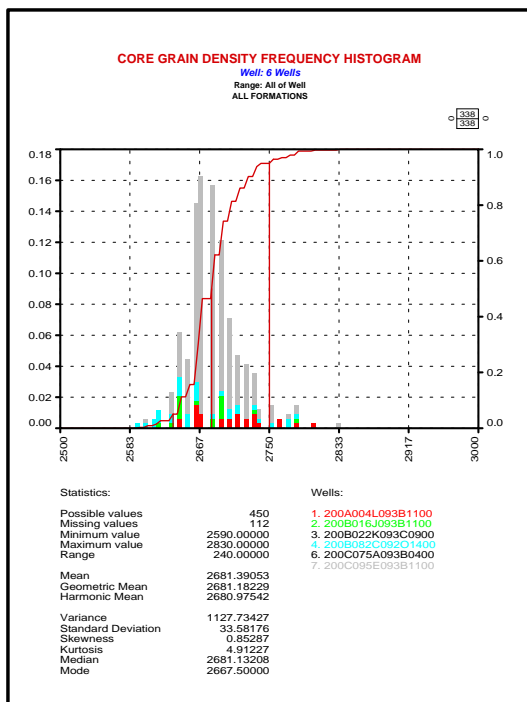


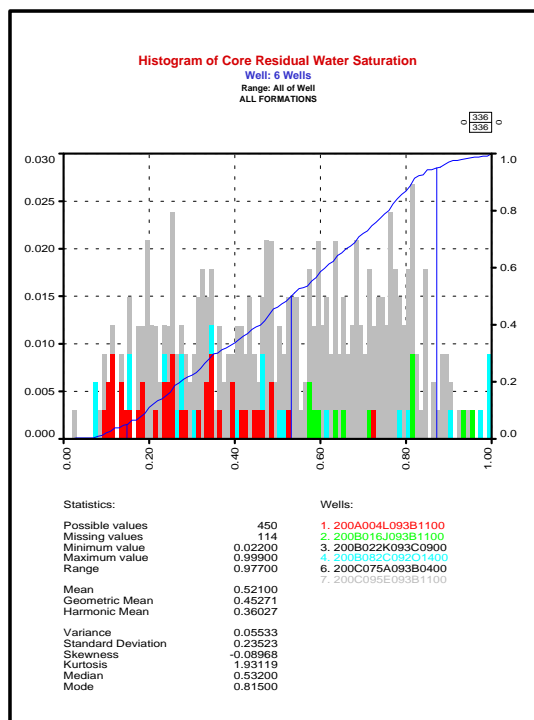
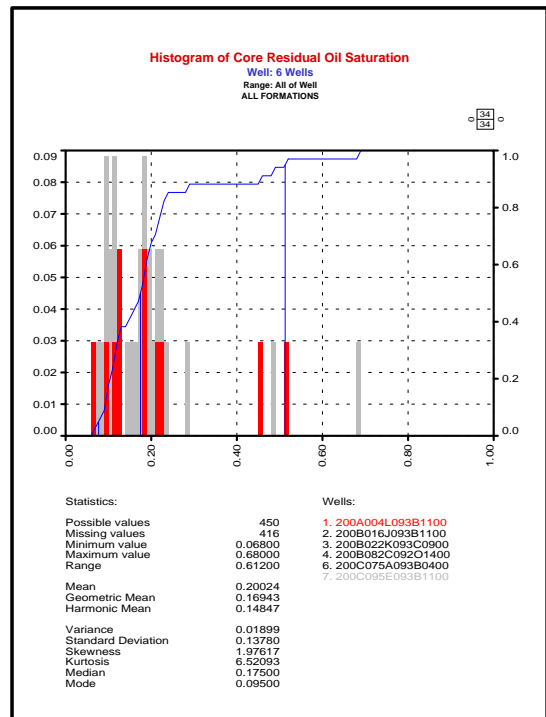
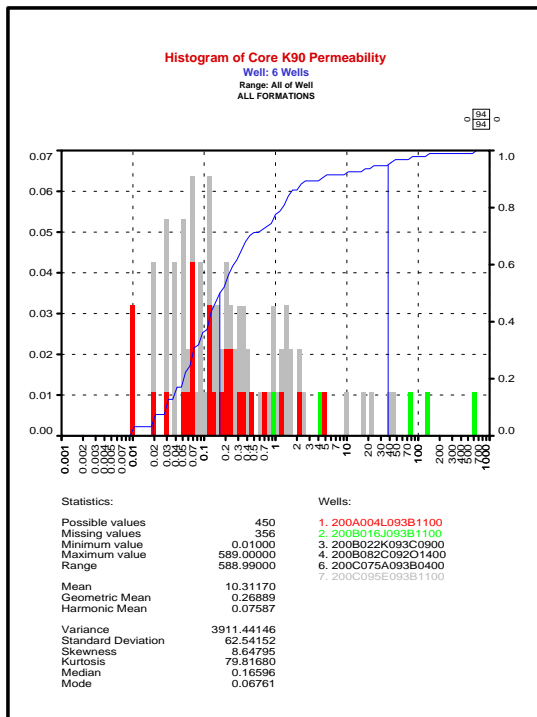
Figure 2: Multi-Well Core Kv vs. Kmax Permeability



Figures 3, 4, 5, 6: Multi-Well Core Analysis – Histograms



Figures 7, 8, 9: Multi-Well Core Analysis – Histograms



Figures 10 – 17 : see cgm diplays