



Mountain caribou are an ecotype of British Columbia's woodland caribou population. They no longer live in almost half of their original range, and are listed as endangered or threatened.

## Permit Conditions and Operational Guidance for Mineral Exploration Activity in Mountain Caribou Habitat

As part of the Mountain Caribou Recovery Implementation Plan, the Ministry of Environment has implemented Government Actions Regulation (GAR) orders for wildlife habitat areas (WHAs), ungulate winter ranges (UWRs) and associated general wildlife measures (GWMs). These measures are designed to reduce the impact from timber harvest and road construction on mountain caribou and their habitat.

Through collaborative discussion with Ministry of Environment, the Association for Mineral Exploration BC (AME BC), the Mountain Caribou Project (MCP) and various industry representatives, the Ministry of Energy, Mines and Petroleum Resources has developed permit conditions and operational guidance that will provide direction and guidance to mineral tenure holders operating in identified mountain caribou habitat (see side table) and statutory decision makers.

The orders, accompanying GAR rationale and boundaries are available from the following Ministry of Environment websites:

WHA: [www.env.gov.bc.ca/cgi-bin/apps/faw/wharesult.cgi?search=show\\_approved](http://www.env.gov.bc.ca/cgi-bin/apps/faw/wharesult.cgi?search=show_approved)

UWR: [www.env.gov.bc.ca/wld/frpa/uwr/approved\\_uwr.html](http://www.env.gov.bc.ca/wld/frpa/uwr/approved_uwr.html)

Notice of Work Permit Conditions and Operational Guidance for Mineral Exploration Activity in Mountain Caribou Habitat can be found at:

<http://empr.gov.bc.ca/Mining/Permitting-Reclamation/ApplicationForms>

Exemption forms may be found at:

[www.env.gov.bc.ca/wld/frpa/index.html](http://www.env.gov.bc.ca/wld/frpa/index.html)

Additional mapping resources can be found at:

iMapBC: [webmaps.gov.bc.ca/imfx/imf.jsp?site=imapbc](http://webmaps.gov.bc.ca/imfx/imf.jsp?site=imapbc)

MapPlace: [www.mapplace.ca/](http://www.mapplace.ca/)

If you have questions specific to a Notice of Work permit application, please contact your local Ministry of Energy, Mines and Petroleum Resources office:

[www.empr.gov.bc.ca/Mining/RegionalOffices/Pages/default.aspx](http://www.empr.gov.bc.ca/Mining/RegionalOffices/Pages/default.aspx)

For more information about the Mountain Caribou Recovery Implementation Plan, please refer to the Ministry of Environment website at:

[www.env.gov.bc.ca/sarco/mc/index.html](http://www.env.gov.bc.ca/sarco/mc/index.html).

## Government Actions Regulation (GAR) Orders established for mountain caribou:

### Wildlife Habitat Areas (WHAs):

5-088 to 5-117 (Quesnel Highlands)

8-226 to 8-229 and 8-230 (Okanagan Shuswap)

### Ungulate Winter Ranges (UWRs):

U-3-004 (Wells Gray Thompson)

U-3-005 (Revelstoke Shuswap)

U-4-010 (Kinbasket)

U-4-012 (Southwest Kootenay)

U-4-013 (Southeast Kootenay)

U-4-014 (Central Kootenay)

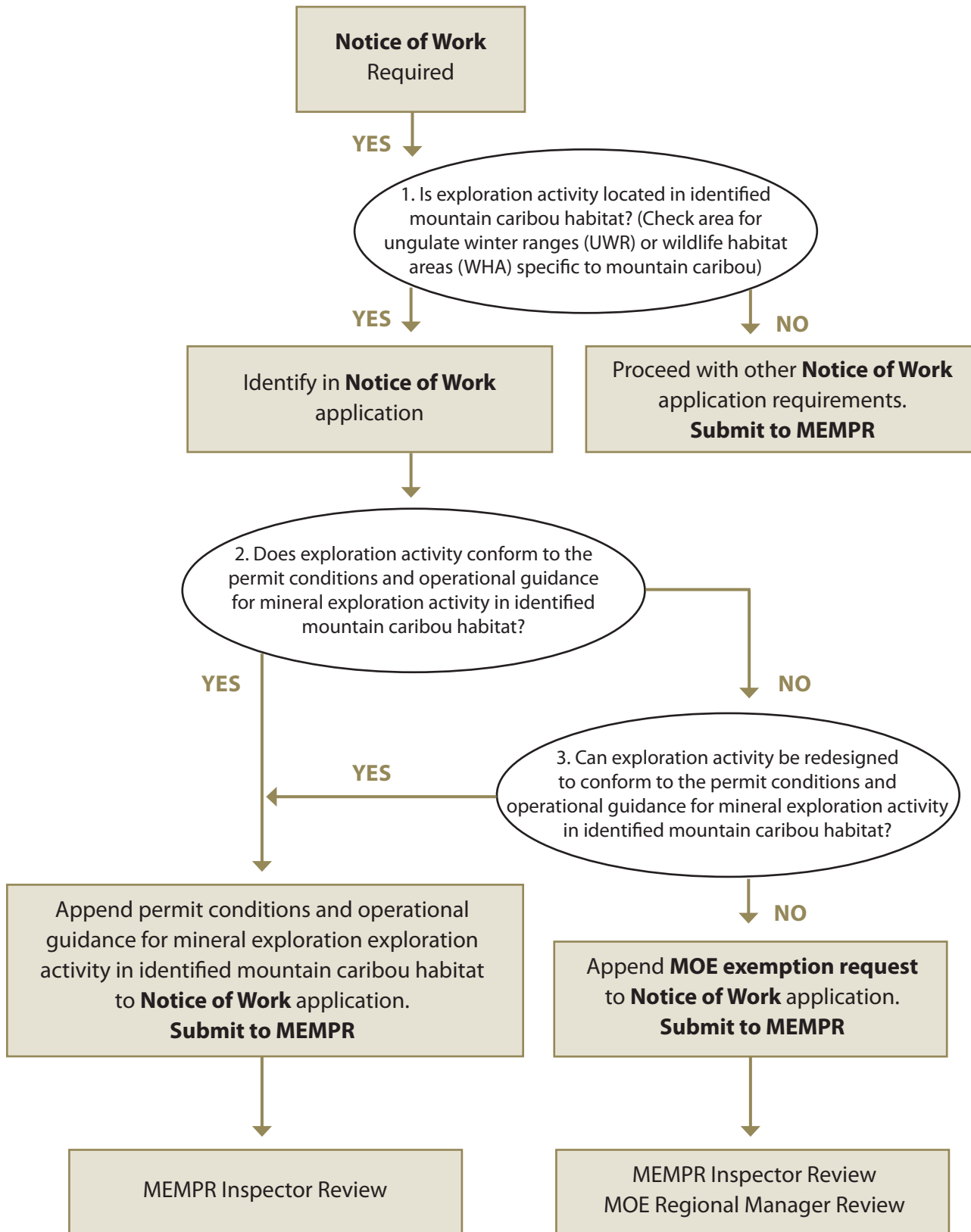
U-7-003 (Hart Ranges Upper Fraser)

U-8-004 (Okanagan Shuswap)

U-8-012 (South Monashee)



# NOTICE OF WORK APPLICATION PROCESS IN IDENTIFIED MOUNTAIN CARIBOU HABITAT



For more information, see permit conditions and guidelines or call your regional MEMPR office.  
 For an overview of the complete permitting process, please find the Mine Approval Process in B.C.  
[www.empr.gov.bc.ca/MACR/investors/Pages/English.aspx](http://www.empr.gov.bc.ca/MACR/investors/Pages/English.aspx)