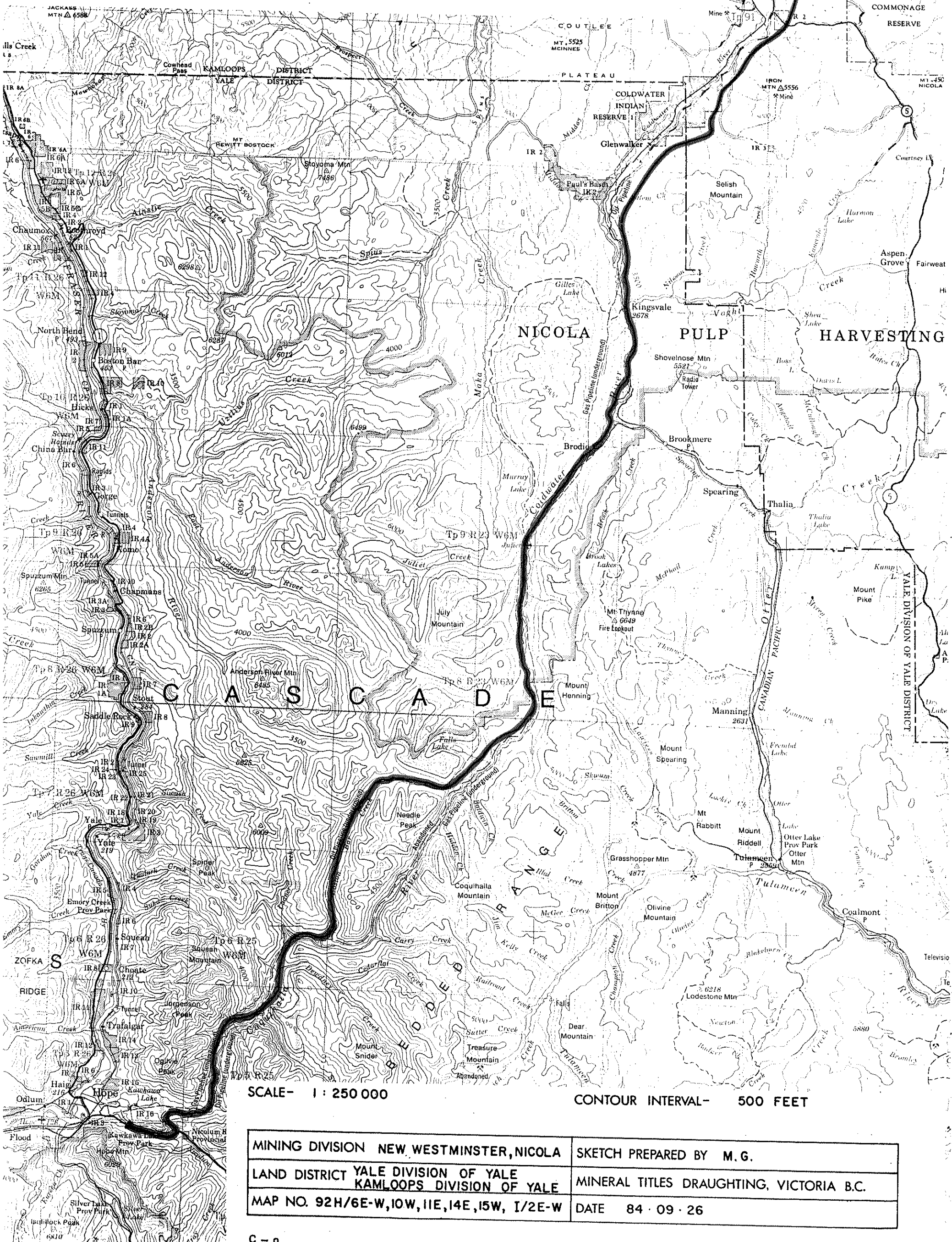




Province of British Columbia
Ministry of Energy, Mines and Petroleum Resources
MINERAL RESOURCES BRANCH-TITLES DIVISION

COQUIHALLA HIGHWAY - MINERAL RESERVE AMENDMENT



SCALE- 1 : 250 000

CONTOUR INTERVAL- 500 FEET

MINING DIVISION NEW WESTMINSTER, NICOLA	SKETCH PREPARED BY M. G.
LAND DISTRICT YALE DIVISION OF YALE KAMLOOPS DIVISION OF YALE	MINERAL TITLES DRAUGHTING, VICTORIA B.C.
MAP NO. 92H/6E-W, 10W, 11E, 14E, 15W, 1/2E-W	DATE 84 · 09 · 26