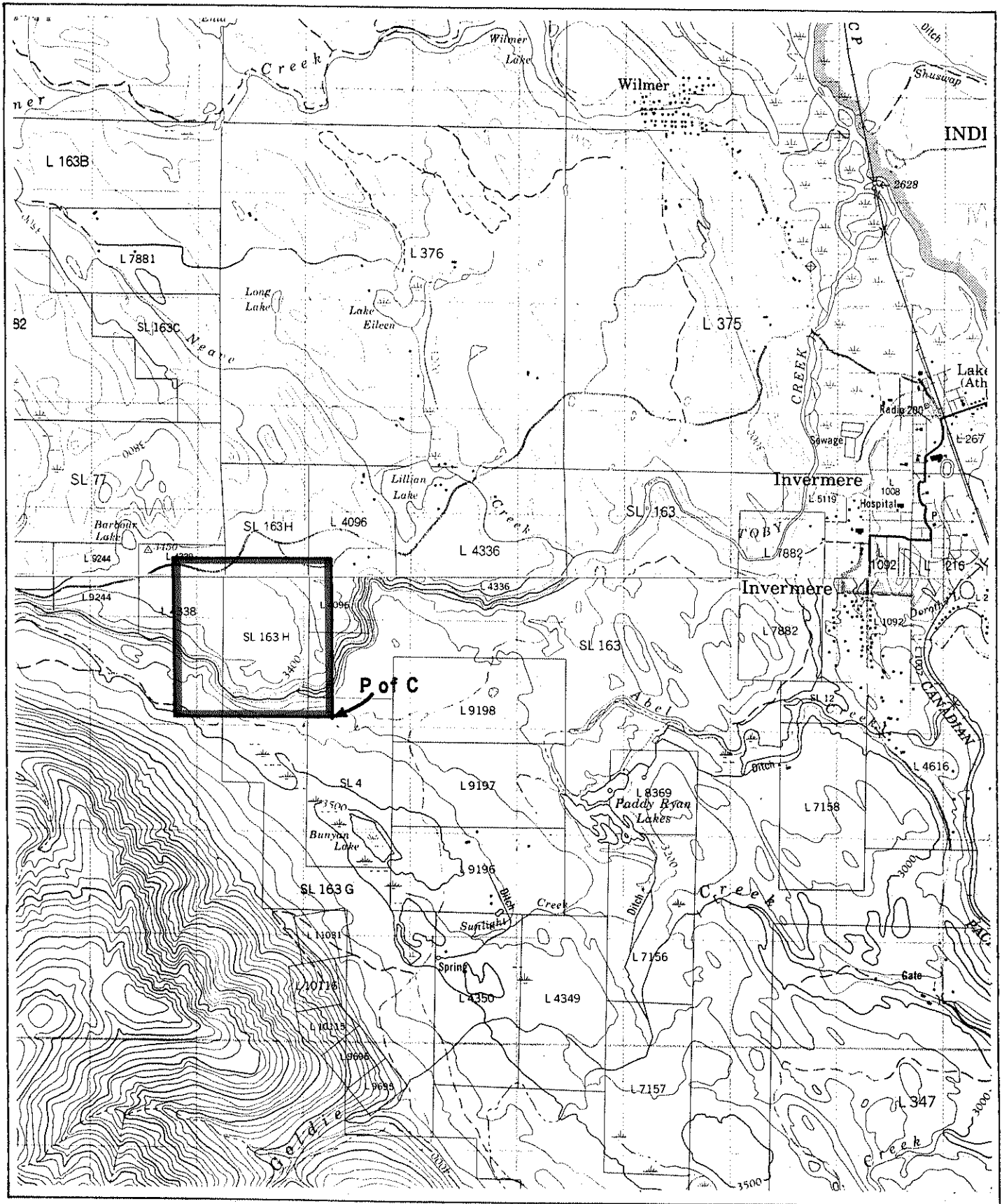




Province of British Columbia
Ministry of Energy, Mines and Petroleum Resources
MINERAL RESOURCES BRANCH-TITLES DIVISION

INVERMERE ELECTRIC SUB-STATION



SCALE - 1:50 000

CONTOUR INTERVAL - 100 FEET

MINING DIVISION GOLDEN	SKETCH PREPARED BY S.H.
LAND DISTRICT KOOTENAY	MINERAL TITLES DRAUGHTING, VICTORIA B.C.
MAP NO. 82 K/8E & 9E	DATE DEC. 21, 1982