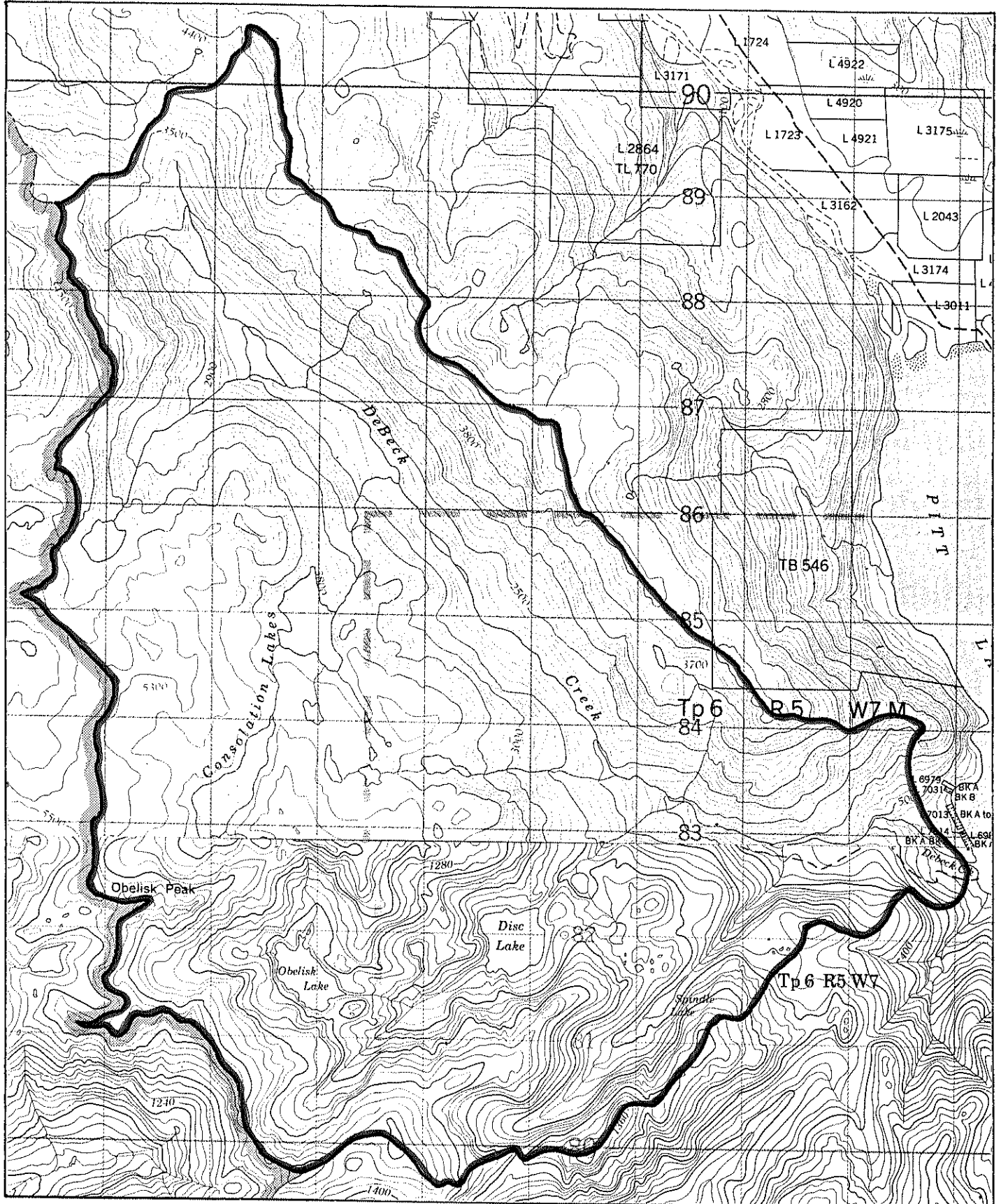




Province of British Columbia
Ministry of Energy, Mines and Petroleum Resources
MINERAL RESOURCES BRANCH-TITLES DIVISION

DEBECK CREEK DESIGNATED PLACER AREA



SCALE- 1:50 000

CONTOUR INTERVAL- 40 m. (92G/7)
100 FEET (92G/10)

MINING DIVISION	NEW WESTMINSTER	SKETCH PREPARED BY	D. DJAFAR-ZADE
LAND DISTRICT	NEW WESTMINSTER	MINERAL TITLES DRAUGHTING,	VICTORIA B.C.
MAP NO.	92G/7E g & h, 92G/10E a & b	DATE	82-03-18