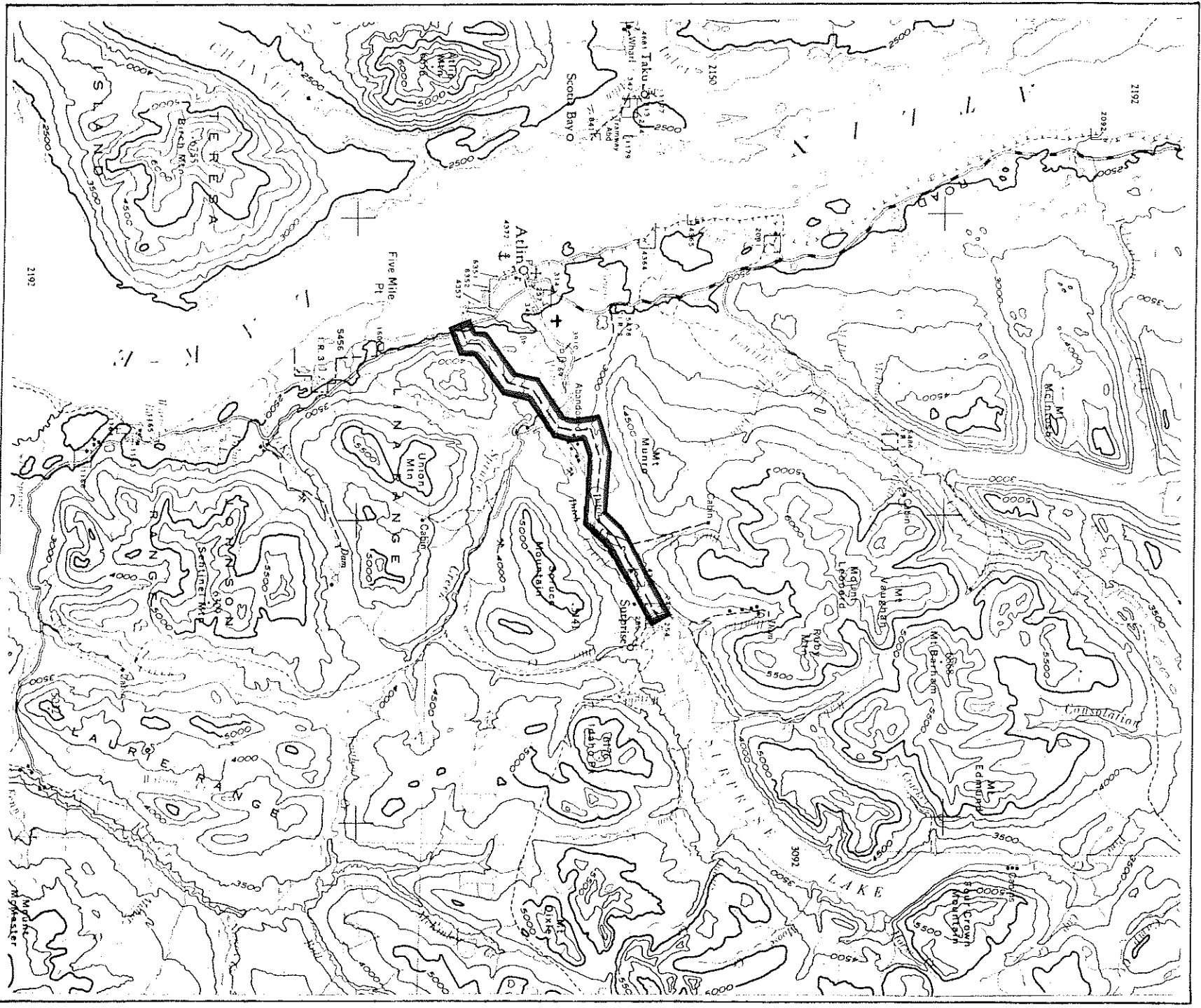




Province of British Columbia
Ministry of Energy, Mines and Petroleum Resources
MINERAL RESOURCES BRANCH-TITLES DIVISION

PROPOSED ADANAC MOLYBDENUM POWER CANAL PROJECT



SCALE - 1 : 250 000

CONTOUR INTERVAL - 500 ft.

| | | | |
|-----------------|-----------------|----------------------------|---------------|
| MINING DIVISION | ATLIN | SKETCH PREPARED BY | R. LAYFIELD |
| LAND DISTRICT | CASSIAR | MINERAL TITLES DRAUGHTING, | VICTORIA B.C. |
| MAP NO. | 104 N/IIW 8 12E | DATE | 81.02.12 |