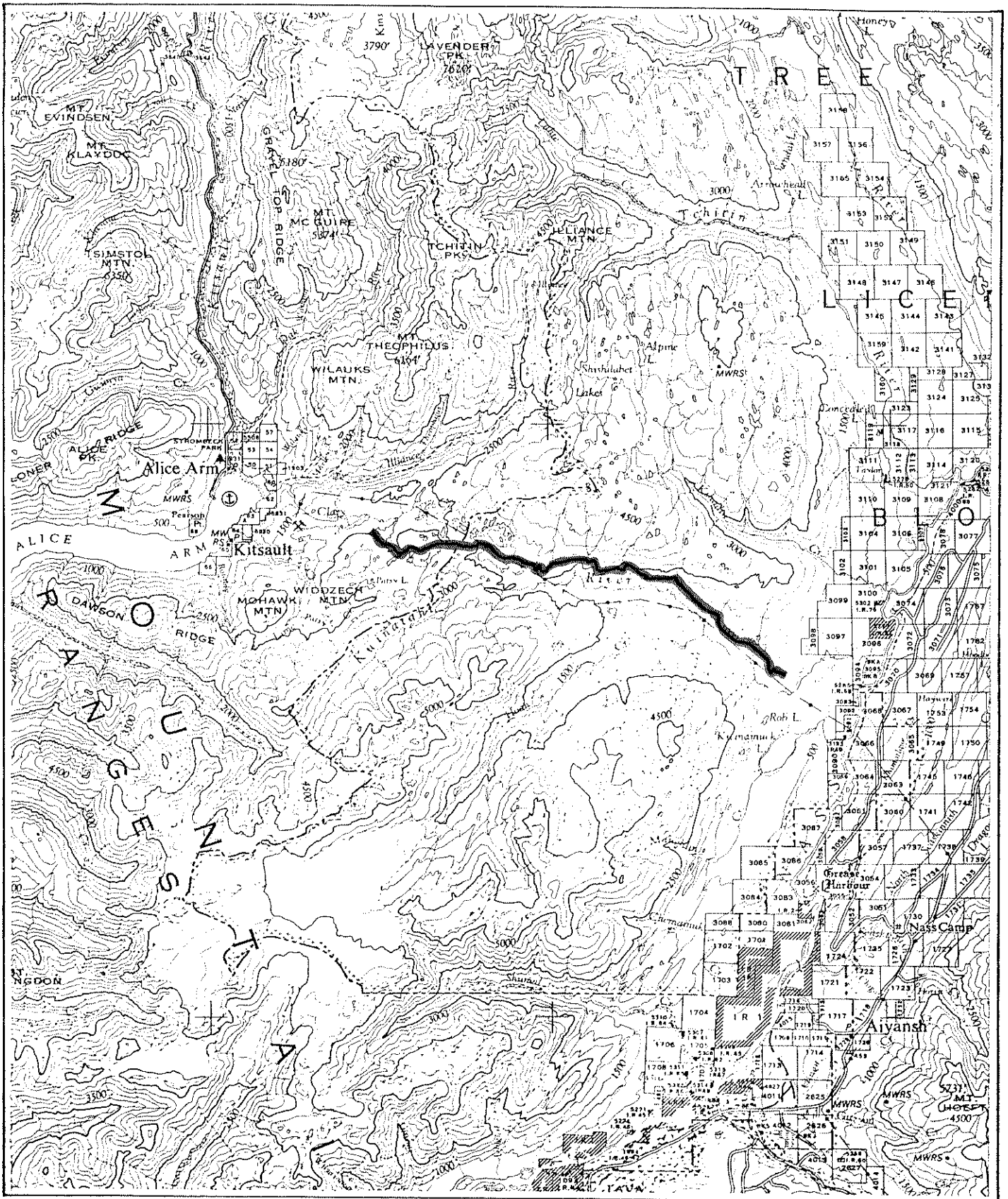




Province of British Columbia  
Ministry of Energy, Mines and Petroleum Resources  
MINERAL RESOURCES BRANCH-TITLES DIVISION

PROPOSED ACCESS ROAD: NASS RIVER-KITSALT



SCALE- 1:250 000

CONTOUR INTERVAL- 500 FEET

MINING DIVISION SKEENA	SKETCH PREPARED BY S.H.
LAND DISTRICT CASSIAR	MINERAL TITLES DRAUGHTING, VICTORIA B.C.
MAP NO. 103P/6E&W	DATE FEBRUARY 9, 1979