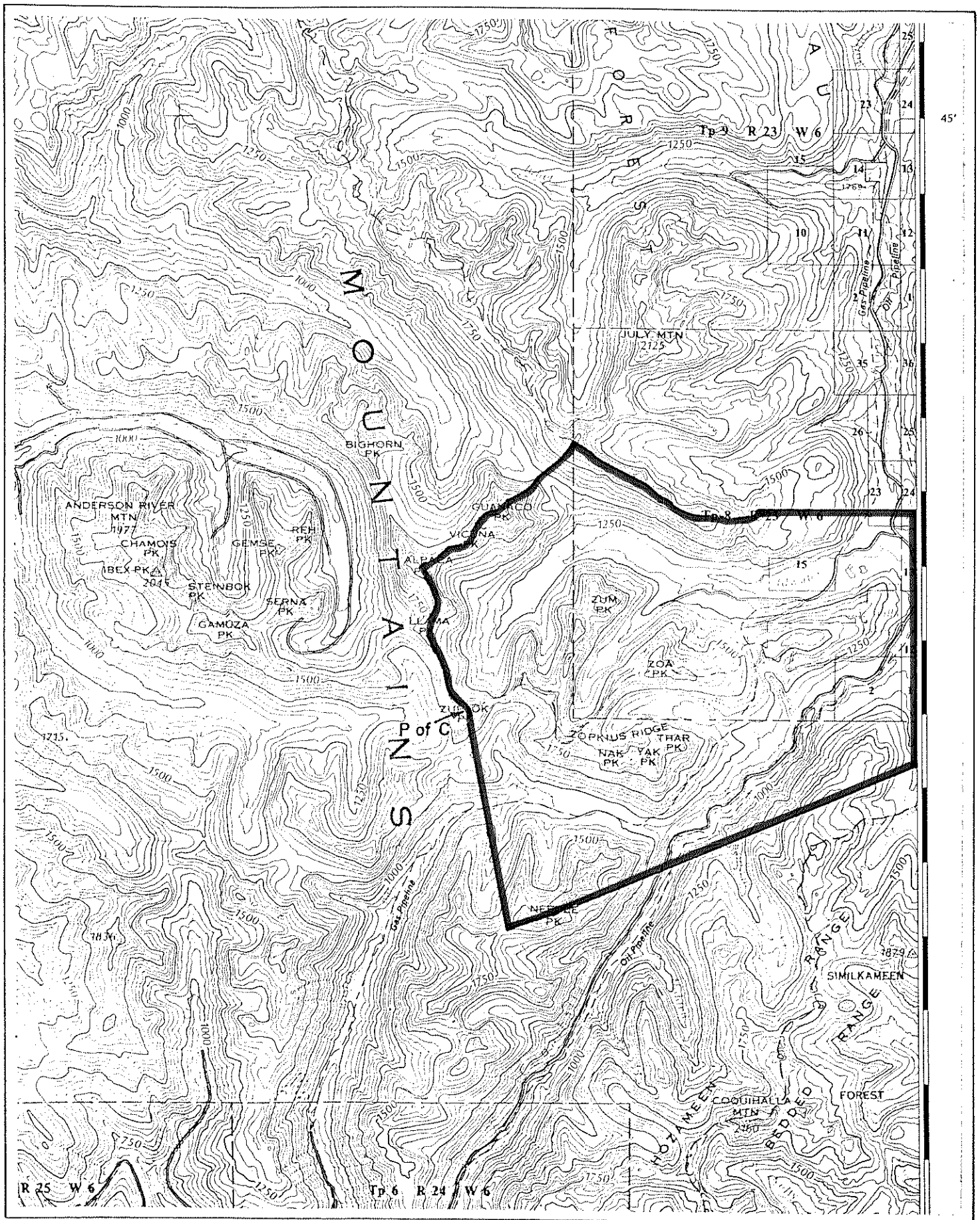




Province of British Columbia
Ministry of Mines and Petroleum Resources
MINERAL RESOURCES BRANCH



SCALE: 1:125 000

CONTOUR INTERVAL: 50 m

| | |
|--|--|
| MINING DIVISION(S) NEW WESTMINSTER, NICOLA | MINERAL TITLES DRAUGHTING ROOM, VICTORIA, B.C. |
| LAND DISTRICT (S) YALE DIVISION OF YALE | PREPARED BY: S. HOFFMANN |
| MAP NO(S) 92H/11E | DATE: OCTOBER 17, 1978 |